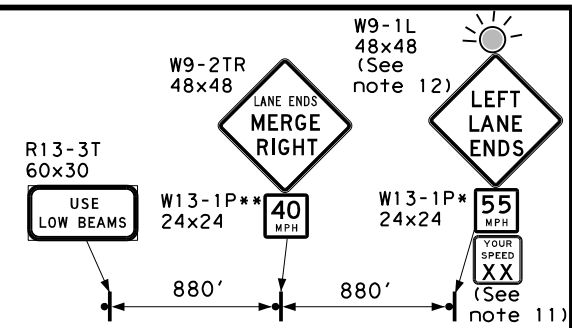
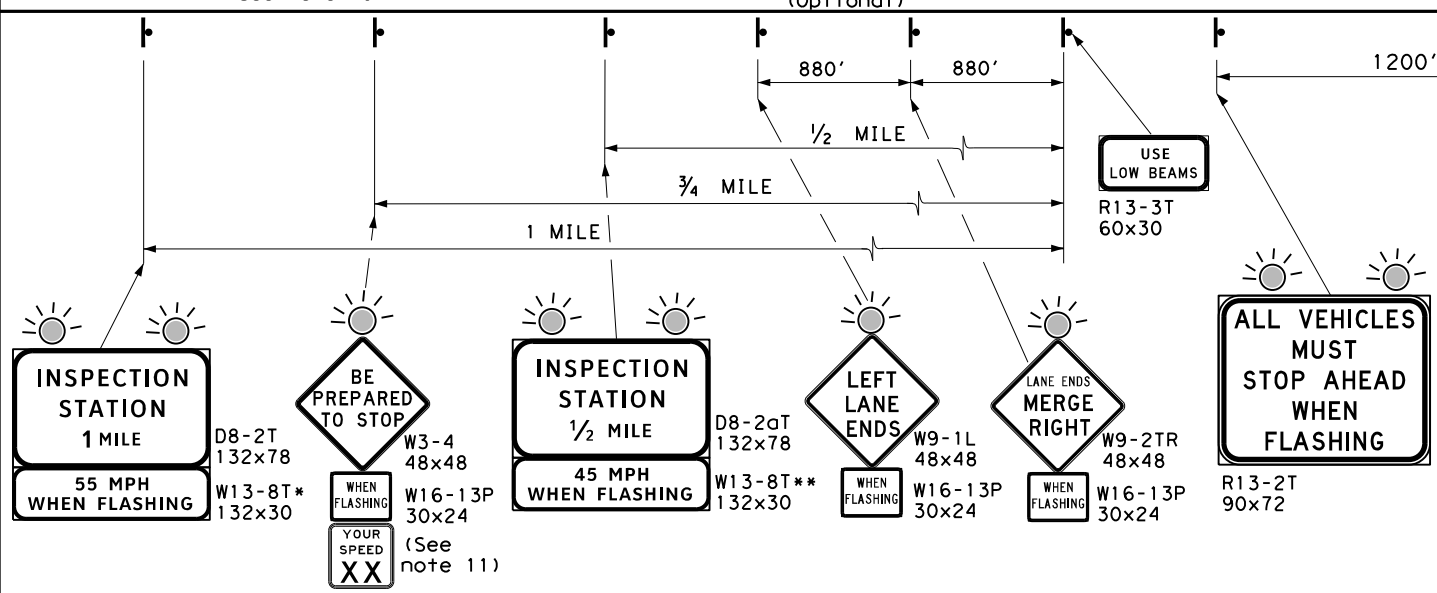
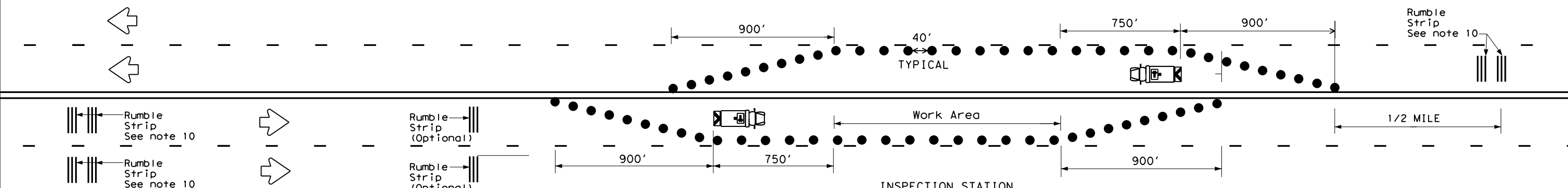


DISCLAIMER: The use of this standard is governed by the "Texas Engineering Practice Act". No warranty of any kind is made by TxDOT for any purpose whatsoever. TxDOT assumes no responsibility for the conversion of this standard to other formats or for incorrect results or damages resulting from its use.

U.S. BORDER PATROL INSPECTION STATION SIGNING ON 4-LANE UNDIVIDED HIGHWAYS



GENERAL NOTES

1. Signs to be furnished, should be as detailed elsewhere in the plans and/or as shown on sign tabulation sheet. Standard sign designs and arrow dimensions can be found in the "Standard Highway Sign Designs for Texas" (SHSD).
2. Black legends shall use the Federal Highway Administration (FHWA) Standard Highway Alphabets (B, C, D, E, Emod or F). White legends shall use the Clearview Alphabet.
3. Lateral spacing between letters and numerals shall conform with the SHSD, and any approved changes thereto. Lateral spacing of legends shall provide a balanced appearance when spacing is not shown.
4. White legends shall be cut-out white sheeting applied to green background sheeting. Black legends shall be applied by screening process, cut-out acrylic non-reflective film or combination thereof.
5. Sign substrate shall be any material that meets the Department Material Specification requirements for permanent sign substrates.
6. Mounting and electrical details are shown in the "SMD" and "ED" series Standard Plan Sheets.
7. Transition "L" shall use merging taper length for additional safety.
8. When Inspection Station is closed, channelizing devices and work vehicles shall be removed, W9-1L and W9-2TR signs (in opposite direction of checkpoint shall be folded down or turned, Stop Sign shall be turned, covered or moved away and flashing beacons shall be turned off.
9. Any modifications to this sheet shall be approved by TxDOT prior to application.
10. Rumble strips (raised) shall be installed at least 1 mile in advance of the stop condition for "permanent" Border Patrol Checkpoint locations. Exact placement of transverse rumble strips will be determined by TxDOT. Transverse rumble strip details are shown in the "RS" Series Standard Plan Sheets.
11. The legend on the Radar Speed Display sign shall be black letters and border on a yellow background and provided by Border Patrol.
12. Solar power flashing beacon details are shown in the "SPRFBA" series Standard Plan Sheets.
13. Request for canopies at the border patrol inspection stations should be submitted to the TxDOT District office.

POSTED SPEED (MPH)	ADVISORY SPEED (MPH)	
	W13-8T* W13-1P*	W13-8T** W13-1P**
70, 75	55	45
65	50	40
60	45	35
55	40	30

DEPARTMENTAL MATERIAL SPECIFICATIONS	
ALUMINUM SIGN BLANKS	DMS-7110
SIGN FACE MATERIALS	DMS-8300
FIBERGLASS SIGN SUBSTRATE	DMS-8305
FLASHING BEACON SIGNAL HEAD	DMS-11120
TWELVE-INCH LED TRAFFIC SIGNAL LAMP UNIT	DMS-11121

SHEETING REQUIREMENTS		
USAGE	COLOR	SIGN FACE MATERIAL
BACKGROUND (W-SERIES)	FLR. YELLOW	TYPE B _{FL} OR C _{FL} SHEETING
BACKGROUND (R13-2T & R13-3T)	WHITE	TYPE A SHEETING
BACKGROUND (R1-1)	RED	TYPE B OR C SHEETING
BACKGROUND (D-SERIES)	GREEN	TYPE B OR C SHEETING
LEGEND & BORDERS (W-SERIES)	BLACK	ACRYLIC NON-REFLECTIVE FILM
LEGEND & BORDERS (R13-2T & R13-3T)	BLACK	ACRYLIC NON-REFLECTIVE FILM
LEGEND & BORDER (R1-1)	WHITE	TYPE B OR C SHEETING
LEGEND & BORDERS (D-SERIES)	WHITE	TYPE D SHEETING

LEGEND	
	Sign
	Flashing Beacon
	Plastic Drum or 42" Cone in accordance with the TxDOT Compliant Work Zone Traffic Control Device List.
	Truck Mounted Attenuator (TMA)
	Heavy Work Vehicle with flashing arrow panel and with amber high intensity rotating, flashing, oscillating, or strobe lights

Texas Department of Transportation Traffic Safety Division Standard

U.S. BORDER PATROL INSPECTION STATION SIGNING ON 4-LANE UNDIVIDED HWYS. ISSU-20

FILE: issu-20.dgn	DN: TxDOT	CK: TxDOT	DW: TxDOT	CK: TxDOT
© TxDOT February 2006	CONT	SECT	JOB	HIGHWAY
REVISIONS				
2-10	DIST	COUNTY	SHEET NO.	
11-20				

DATE: FILE: