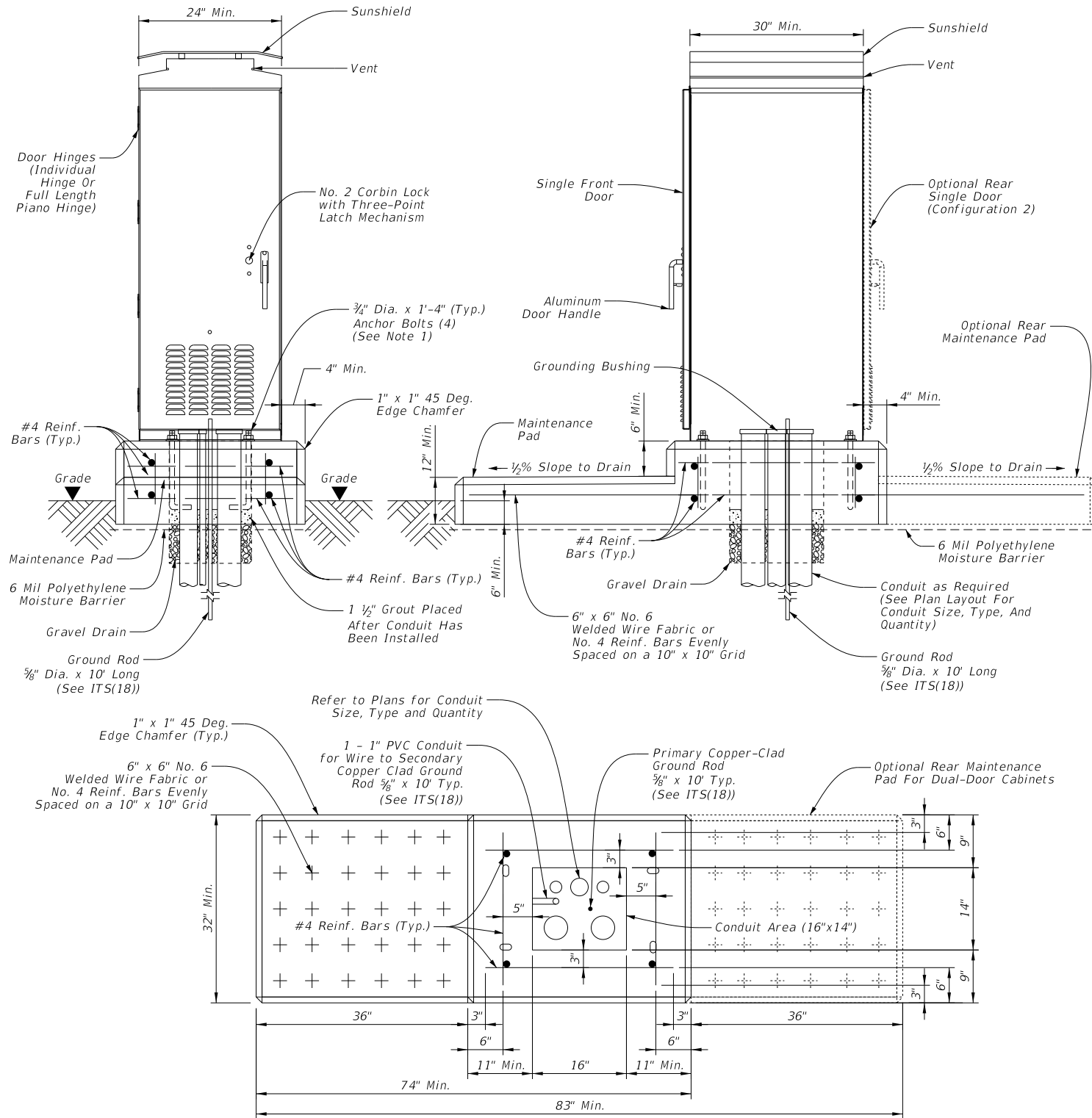
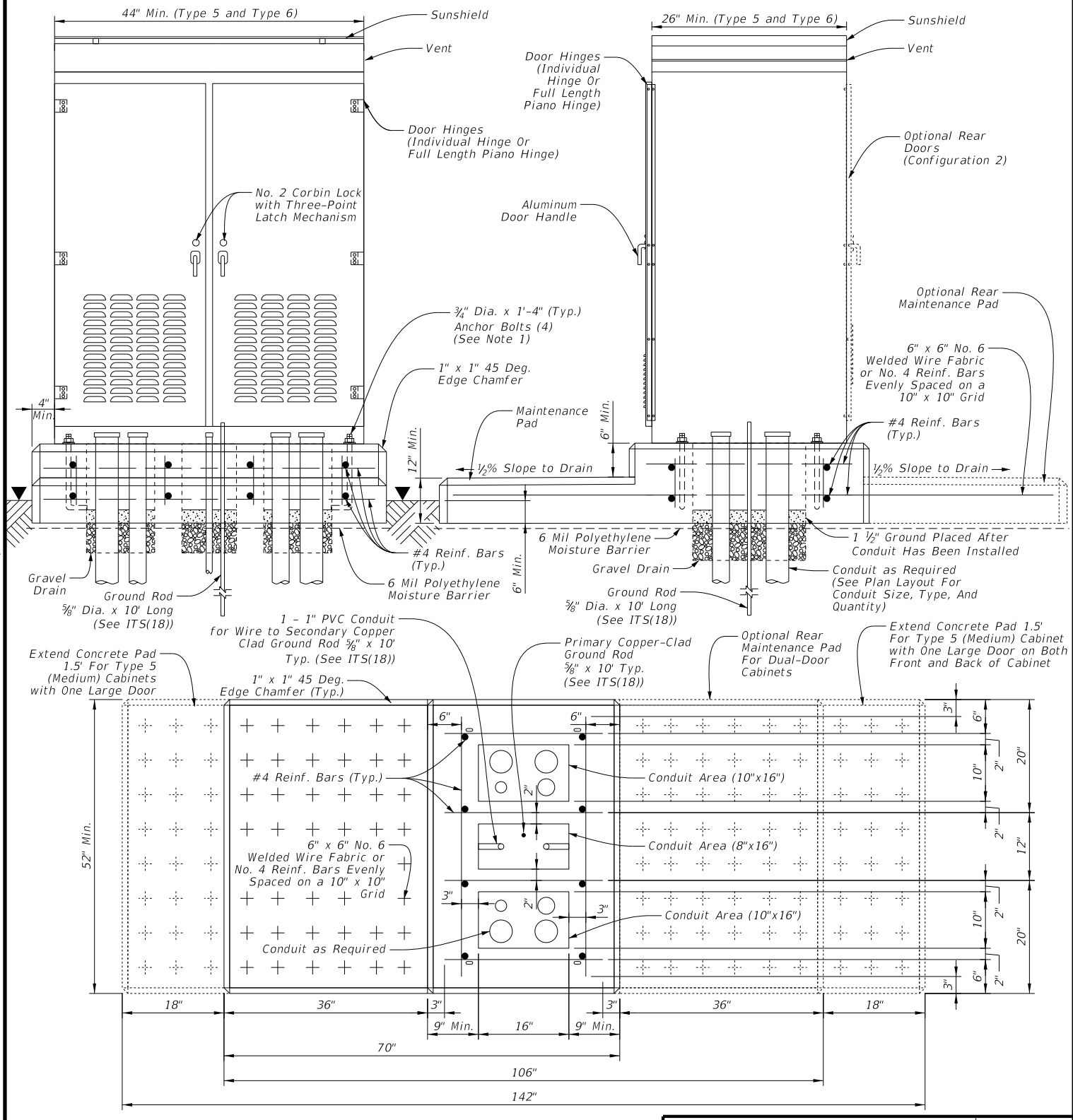


DISCLAIMER: The use of this standard is governed by the "Texas Engineering Practice Act". No warranty of any kind is made by TxDOT for any purpose whatsoever. TxDOT assumes no responsibility for the conversion of this standard to other formats or for incorrect results or damages resulting from its use.



Type 4 (Small) Cabinet



Type 5 (Medium) & Type 6 (Large) Cabinet

General Notes:

1. Details of anchor bolt location to be furnished by the cabinet manufacturer. Size and length of anchor bolts shown in details may vary by manufacturer.
2. Modify concrete base dimensions to fit required cabinet type.
3. Ensure conduit area has gravel drain, 12" depth, coarse aggregate, grade No. 1.
4. All concrete to be Class "A" in accordance with Item 421.
5. Set the cabinet foundation level with the pavement surface, in unpaved area. The foundation shall be a minimum of 4" above surrounding grade, or as approved by the Engineer.
6. Furnish any additional concrete which may be necessary to stabilize foundation at unusual locations.
7. Foundation will be subsidiary to Special Specification "ITS Ground Mounted Cabinet."
8. Ground cabinet as required in cabinet specifications and as detailed on ITS(18) in accordance with the National Electric Code (NEC).
9. Treat cabinet foundation with moisture sealant.
10. Type 5 cabinet foundation will have a slightly larger foundation than Type 6. See foundation notes on details.
11. Drain pipe shall be screened for drainage portion below foundation in gravel.

Texas Department of Transportation
Traffic Operations Division Standard

ITS GROUND MOUNTED CABINET FOUNDATION DETAILS

ITS(21)-15

FILE: its(21)-15.dgn	DN: TxDOT	CK: TxDOT	DW: TxDOT	CK: TxDOT
© TxDOT June 2015	CONT	SECT	JOB	HIGHWAY
REVISIONS				
	DIST	COUNTY		SHEET NO.