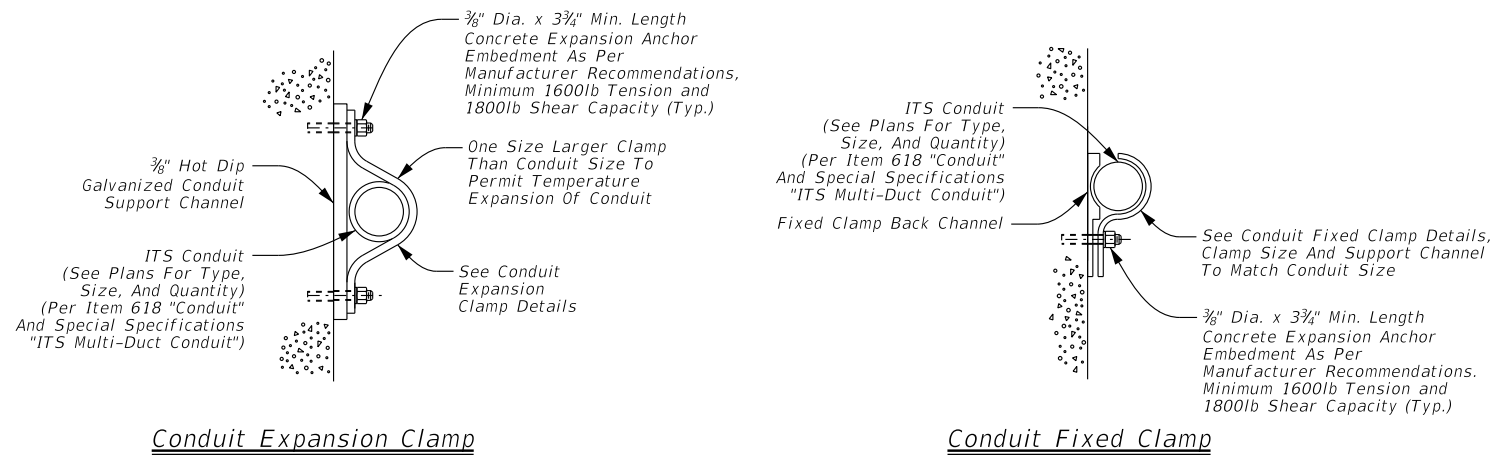
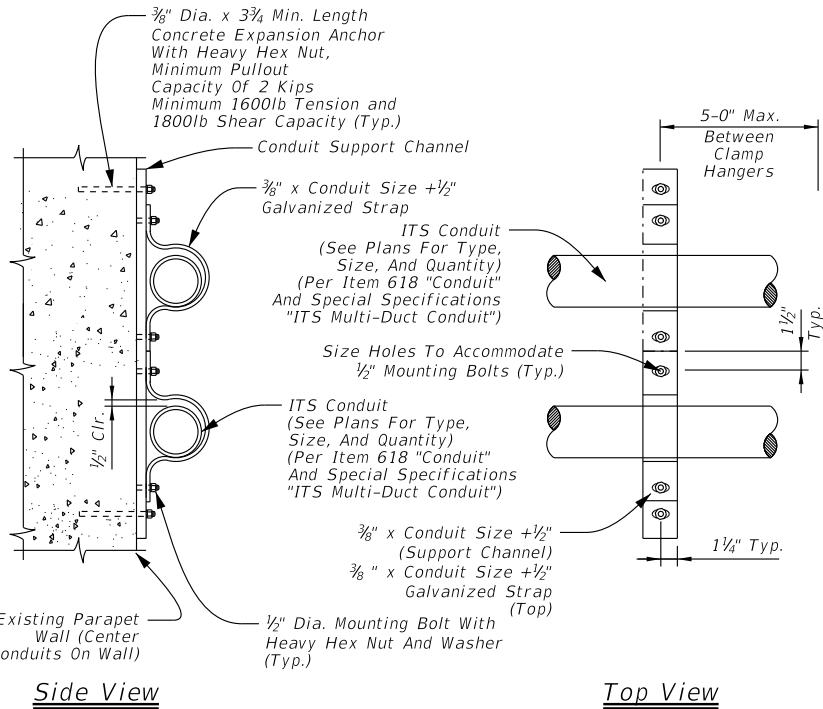


DISCLAIMER: The use of this standard is governed by the "Texas Engineering Practice Act". No warranty of any kind is made by TxDOT for any purpose whatsoever. TxDOT assumes no responsibility for the conversion of this standard to other formats or for incorrect results or damages resulting from its use.

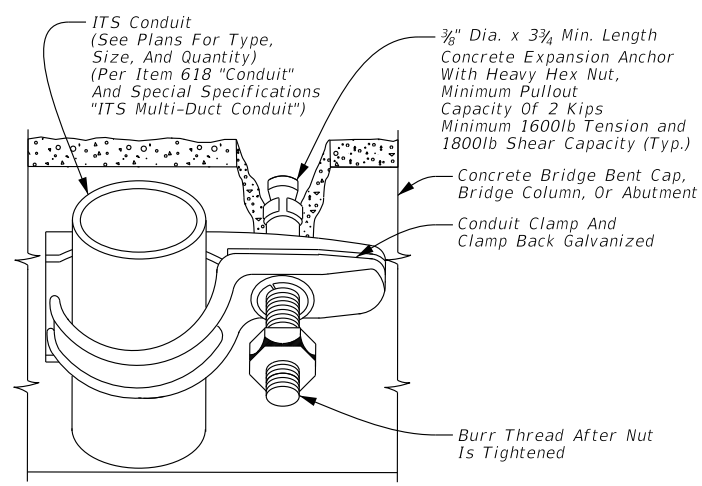
DATE: FILE:



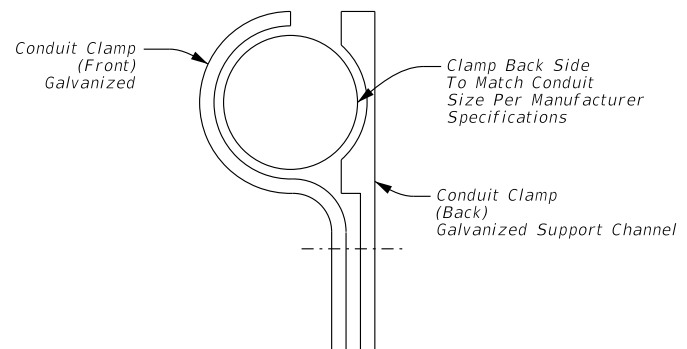
Conduit Clamp Details (Typ.)



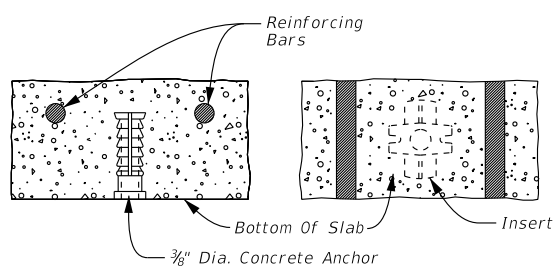
Conduit Expansion Clamp Details



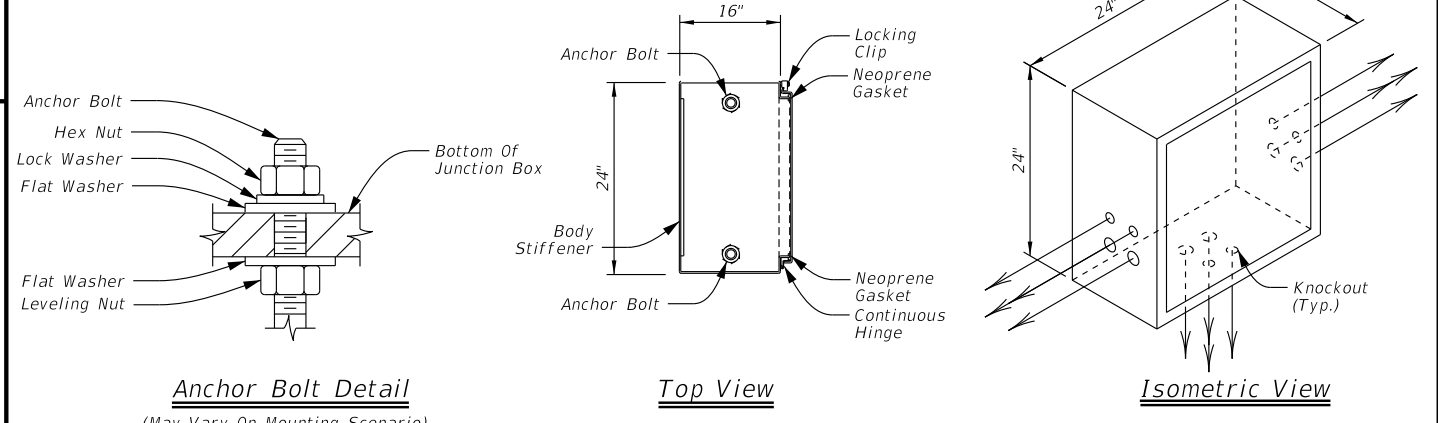
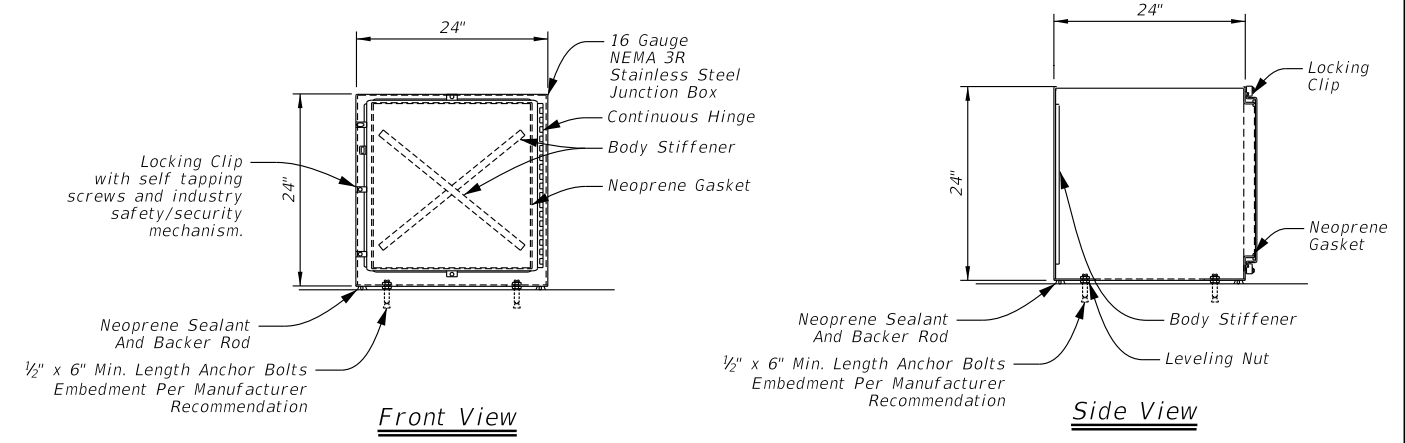
Conduit Fixed Clamp Back Channel



Conduit Fixed Clamp Details



Conduit Fixed Clamp Concrete Insert Detail



24" X 24" X 16" Stainless Steel Transition Junction Box Detail

- Notes:
1. Transition box as depicted is top mount. Actual anchor fasteners and knockout location will vary based upon mount location and manufacturer recommendations.
 2. Secure the transition box cover using self tapping screws with industry safety/security mechanism.
 3. Typical knockout locations shown are for diagrammatic purposes only. The number of transition boxes required at a given location will vary depending on the number of conduits and cable storage requirements for cabling run(s).

General Notes:

1. Ensure all duct/conduit bends are in accordance with the latest version of the NFPA 70, National Electrical Code and as recommended by the manufacturer.
2. Utilize separate transition junction boxes for communications and electrical conduit runs.
3. Maintain constant slope in all duct/conduit runs.
4. Ensure maximum spacing of conduit clamps is 5'-0" C-C.
5. Galvanize all hardware, including anchor bolts, nuts, and washers per TxDOT Item 445, "Galvanizing". Ensure all expansion anchors conform to ASTM A307.
6. Provide a minimum NEMA 3R junction boxes. Construct all junction boxes in accordance with manufacturer specifications. Install junction boxes in accordance with the latest edition of NFPA 70, National Electrical Code.
7. Junction boxes and associated appurtenances are incidental to ITS conduit.
8. Install all conduit sweeps into junction boxes in accordance with allowable bend radius of the installed cable.
9. Install conduit support within 3'-0" of all enclosures and conduit terminations.
10. Refer to ED standard sheets for additional details on parapet mounted conduit.

Sheet Details
Not to Scale

Texas Department of Transportation
Traffic Operations Division Standard

PARAPET MOUNTED ITS CONDUIT AND TRANSITION BOX DETAIL

ITS(31)-16

FILE: ifs(31)-16.dgn	DN: TxDOT	CK: TxDOT	DW: TxDOT	CK: TxDOT
© TxDOT FEBRUARY 2016	CONT	SECT	JOB	HIGHWAY
REVISIONS				
DIST	COUNTY			SHEET NO.