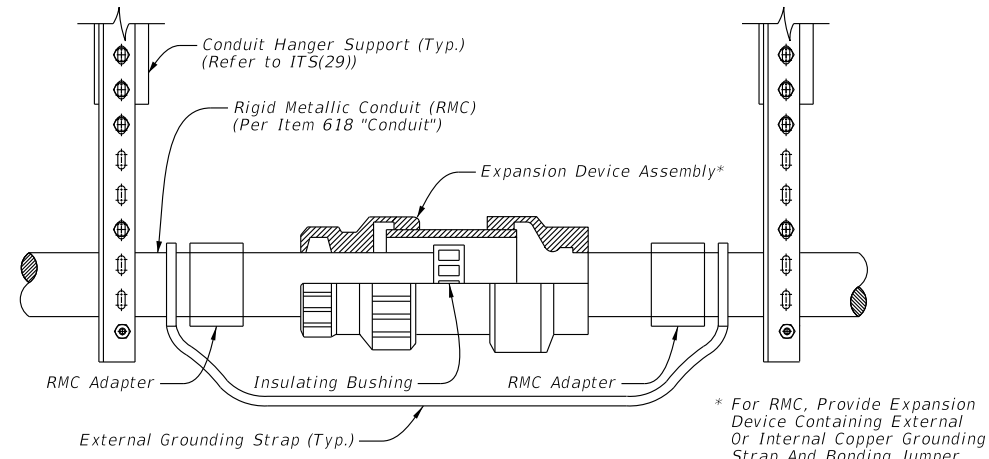
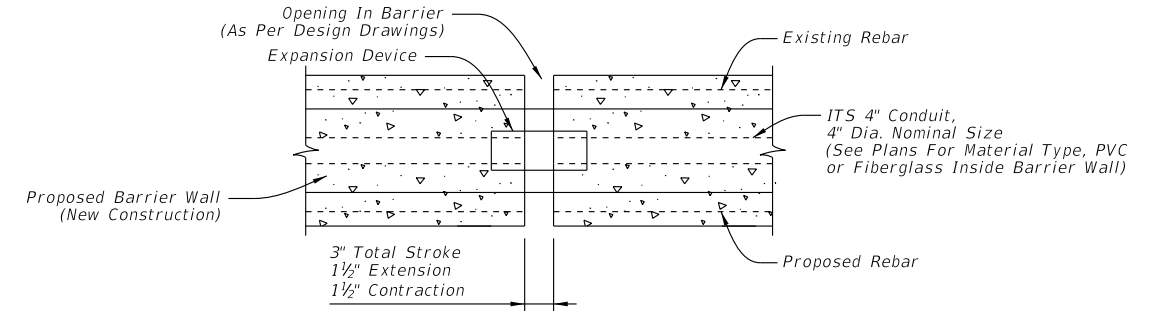


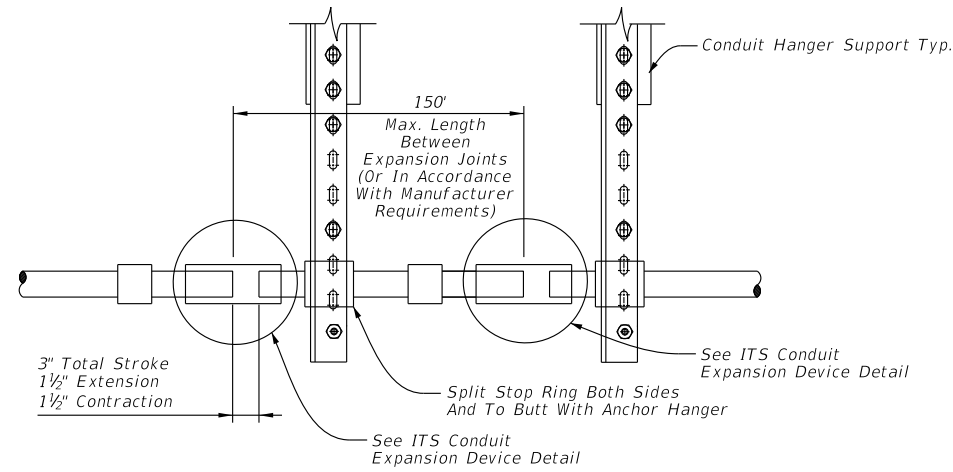
DISCLAIMER: The use of this standard is governed by the "Texas Engineering Practice Act". No warranty of any kind is made by TxDOT for any purpose whatsoever. TxDOT assumes no responsibility for the conversion of this standard to other formats or for incorrect results or damages resulting from its use.



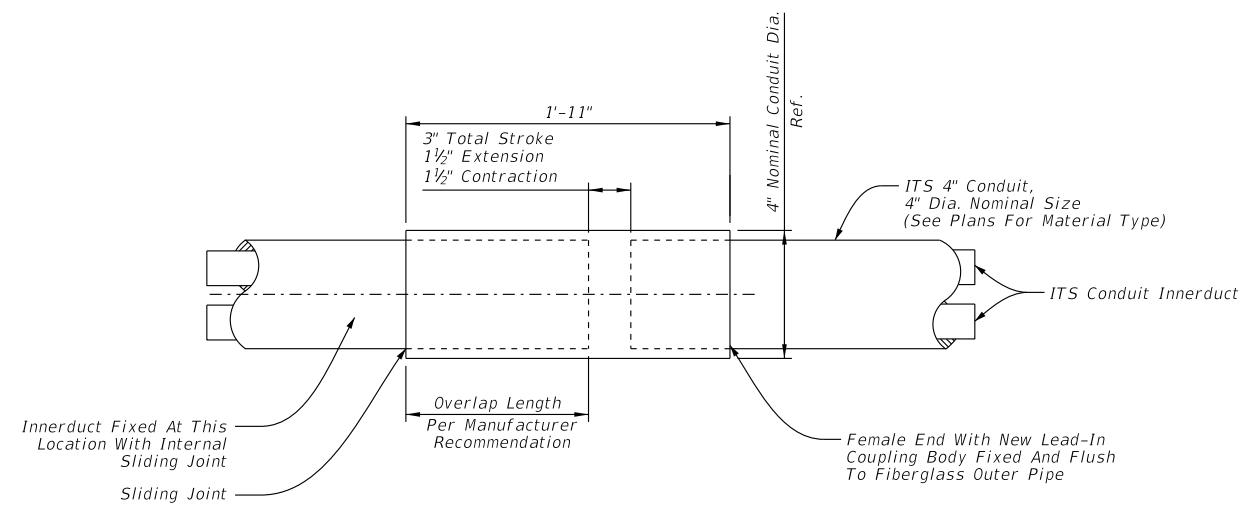
RMC Conduit Expansion Device Detail (Typ.)



ITS Conduit In New Construction Barrier Wall Expansion And Deflection Joint Fitting (Typ.)



ITS Conduit Expansion Device Placement (Typ.)



ITS Conduit Expansion Device Detail

General Notes:

1. Install expansion device at all open joints, at each end of bridge abutments and between bridge bents, allowing for 3" movement.
2. Provide a minimum of two (2) expansion joints at all bridges. Ensure expansion joint spacing does not exceed manufacturer recommendations.
3. Ensure conduit lengths are selected so that couplings do not coincide with hanger locations.
4. Ensure all rigid metallic conduit (RMC) expansion devices are constructed per manufacturer specifications.
5. Bond all external structure mounted conduit throughout entire length of run and ground the run at ground box locations according to ITS(37) and ITS(39).

DATE:  
FILE:

Sheet Details  
Not to Scale

		<b>Traffic Operations Division Standard</b>	
<h2>EXPANSION / DEFLECTION JOINT</h2> <h3>ITS(32)-16</h3>			
FILE: ifs(32)-16.dgn	DN: TxDOT	CK: TxDOT	DW: TxDOT
© TxDOT FEBRUARY 2016	CONT	SECT	JOB
REVISIONS			
DIST	COUNTY		SHEET NO.