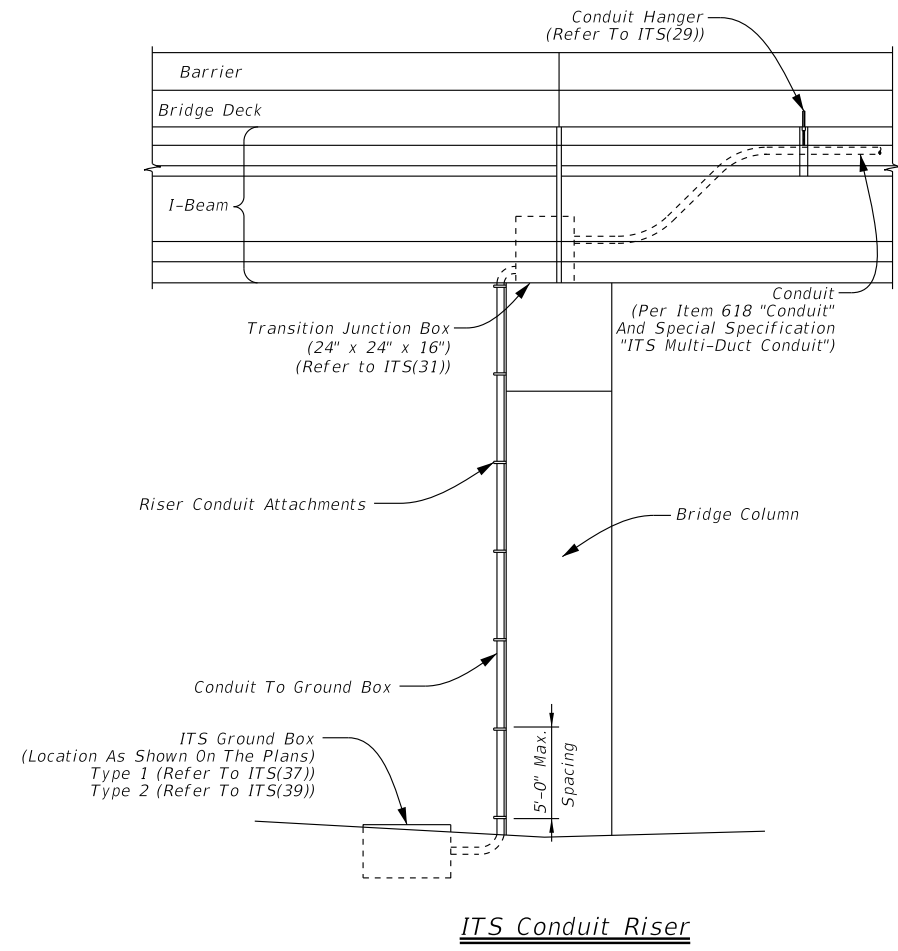
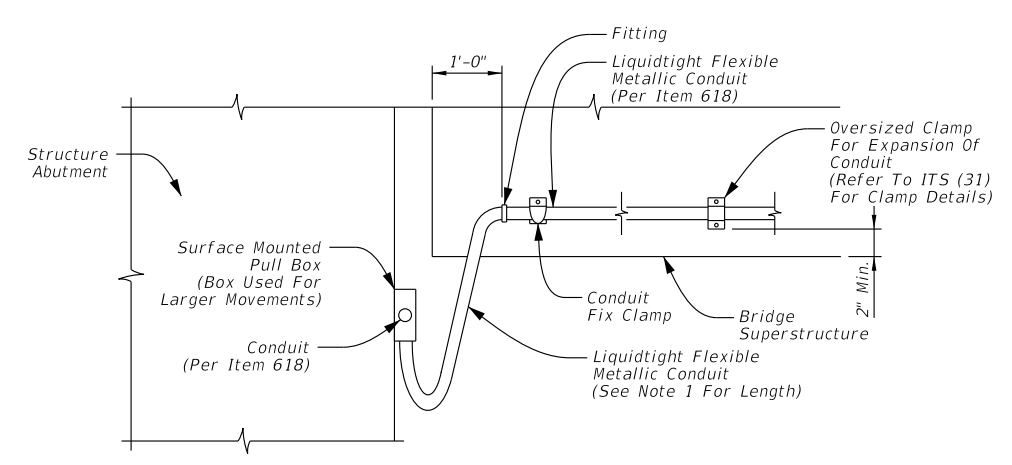


DISCLAIMER: The use of this standard is governed by the "Texas Engineering Practice Act". No warranty of any kind is made by TxDOT for any purpose whatsoever. TxDOT assumes no responsibility for the conversion of this standard to other formats or for incorrect results or damages resulting from its use.

DATE: FILE:



ITS Conduit Riser



Exposed Conduit Connections At Expansion Joints

Notes:

- Bond all external structure mounted conduit throughout entire length of run and ground the run at ground box locations according to ITS(37) and ITS(39).
- The detail shown applies to conduit connections for conduit per Item 618 and is not intended for conduit for fiber optic cable applications.

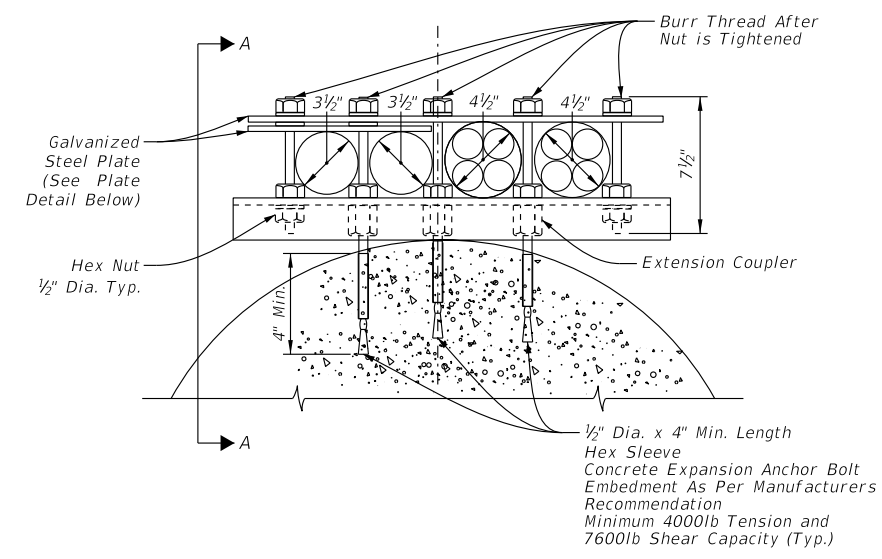
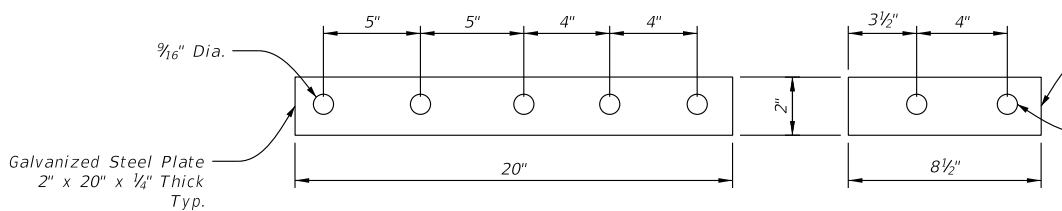
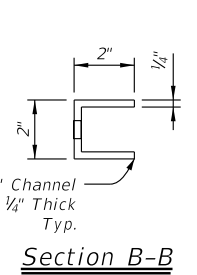


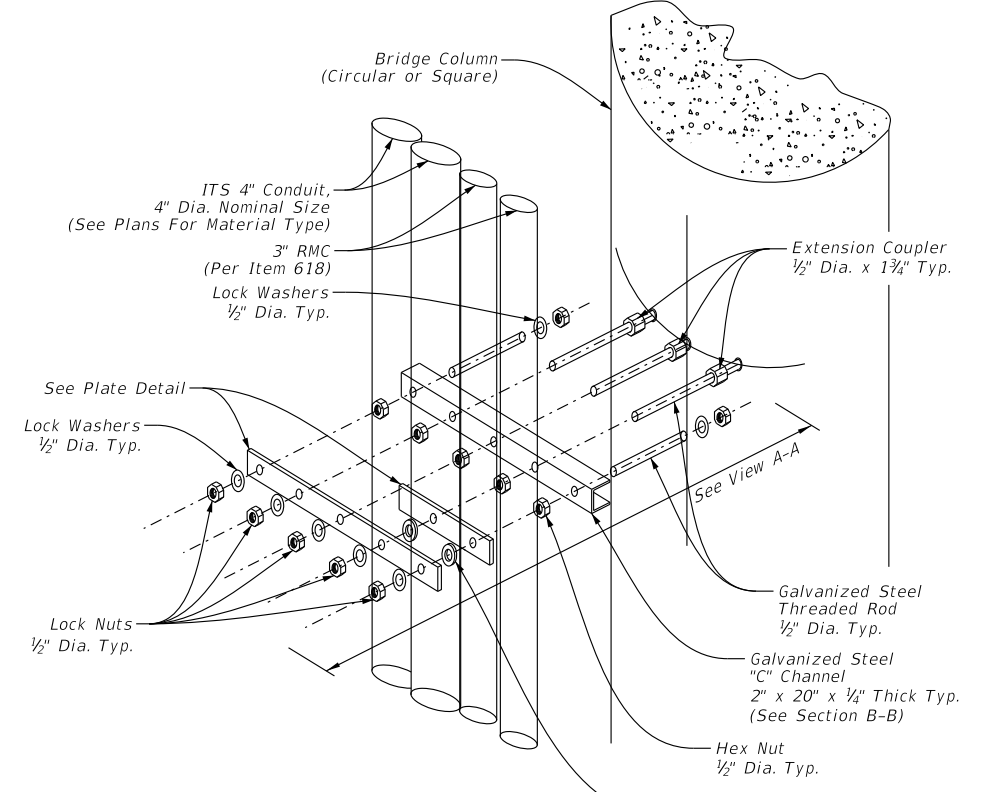
Plate Detail



C Channel Detail



Section B-B



ITS Riser Conduit Bridge Column Attachment

General Notes:

- Utilize an approximate length of flexible conduit at exposed connections of 2 times anticipated movement or 4'-0" minimum.
- Size all transition boxes and surface mounted pull boxes per National Electrical Code Article 314 boxes and fittings.
- For under bridge locations, ensure all junction boxes are kept inaccessible from general public and placed a minimum 10'-0" above surrounding ground.
- Refer to ED standard sheets for additional notes and attachment details for riser conduit.
- See plan sheets for number and size of conduit(s) to be installed.
- Refer to ITS(33) for details involving conduit passing through the abutment.
- Ensure maximum spacing between ITS riser conduit attachments is 5'-0" C-C.
- Install conduit supports within 3'-0" of all enclosures and conduit terminations.
- Ground all rigid metallic conduit (RMC) hangers per manufacturer recommendations when electrical conductors present.
- Ensure all expansion anchors conform to ASTM A307.
- Allowable types of outer duct material for above ground ITS conduit include rigid metallic conduit (RMC) and fiberglass.

Sheet Details
Not to Scale

		Traffic Operations Division Standard	
<h1>ITS CONDUIT RISER</h1>			
<h2>ITS(34)-16</h2>			
FILE: ifs(34)-16.dgn	DN: TxDOT	CK: TxDOT	DW: TxDOT
© TxDOT FEBRUARY 2016	CONT	SECT	JOB
REVISIONS			
DIST	COUNTY		SHEET NO.