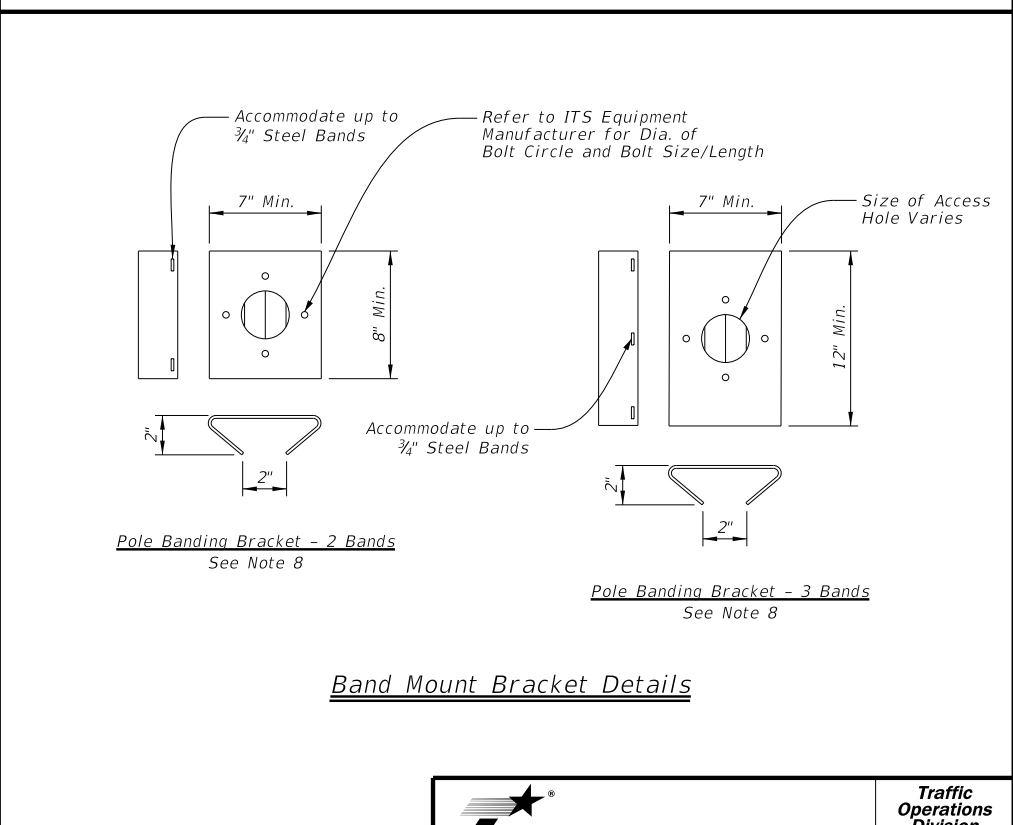
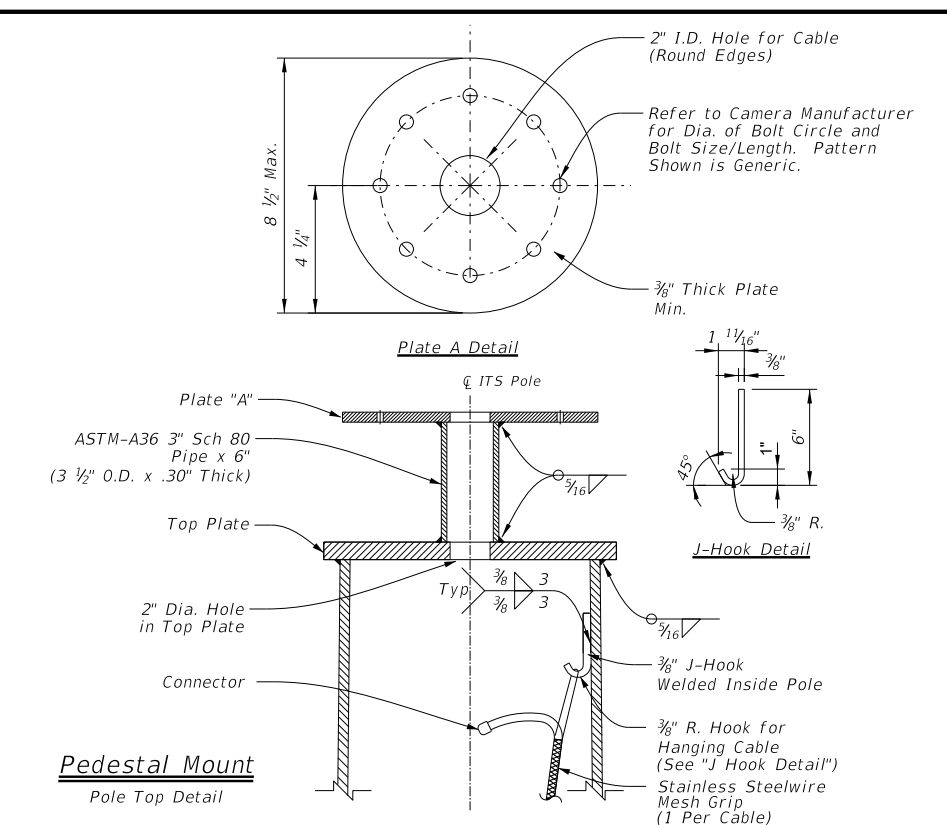
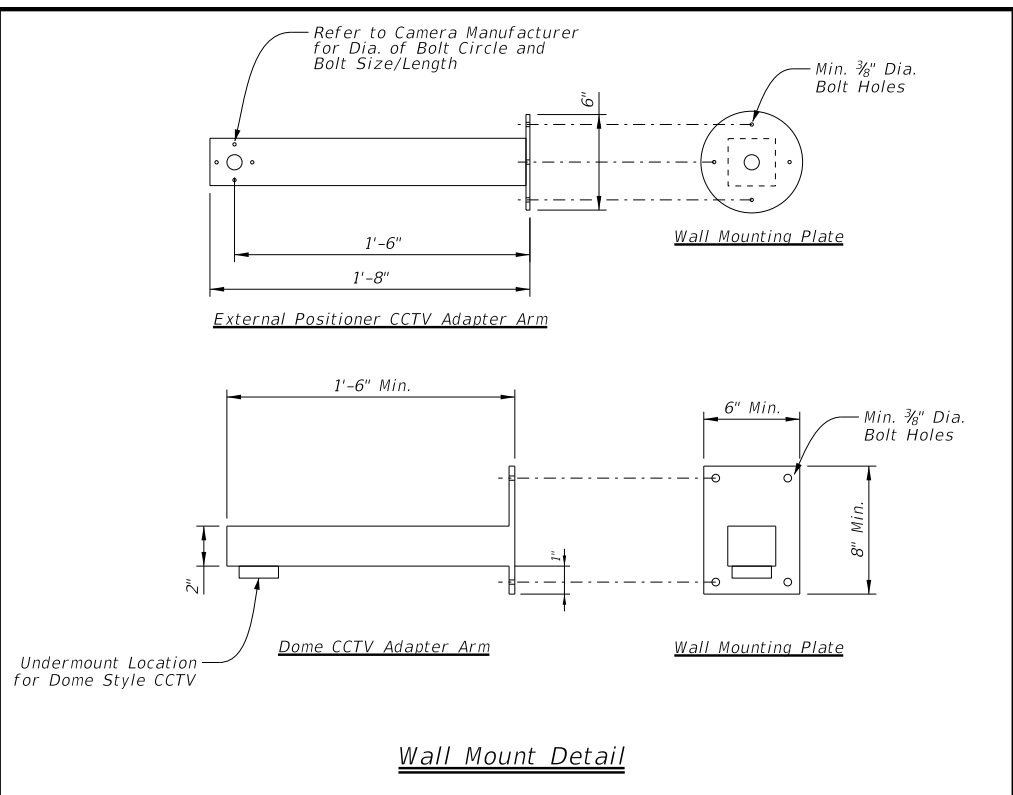
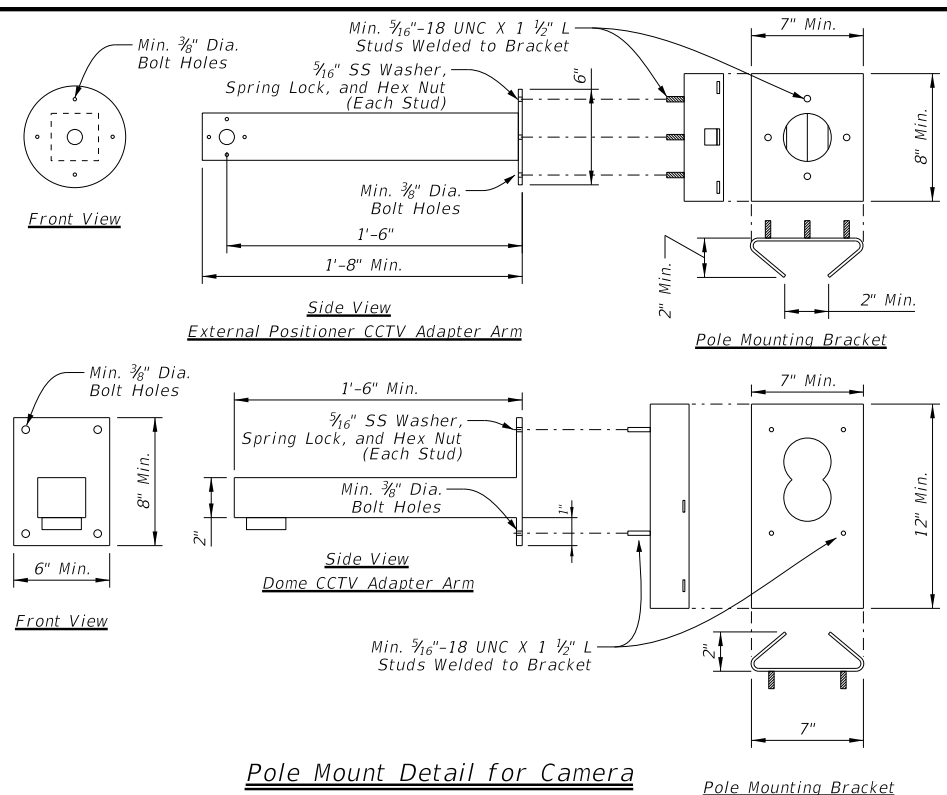
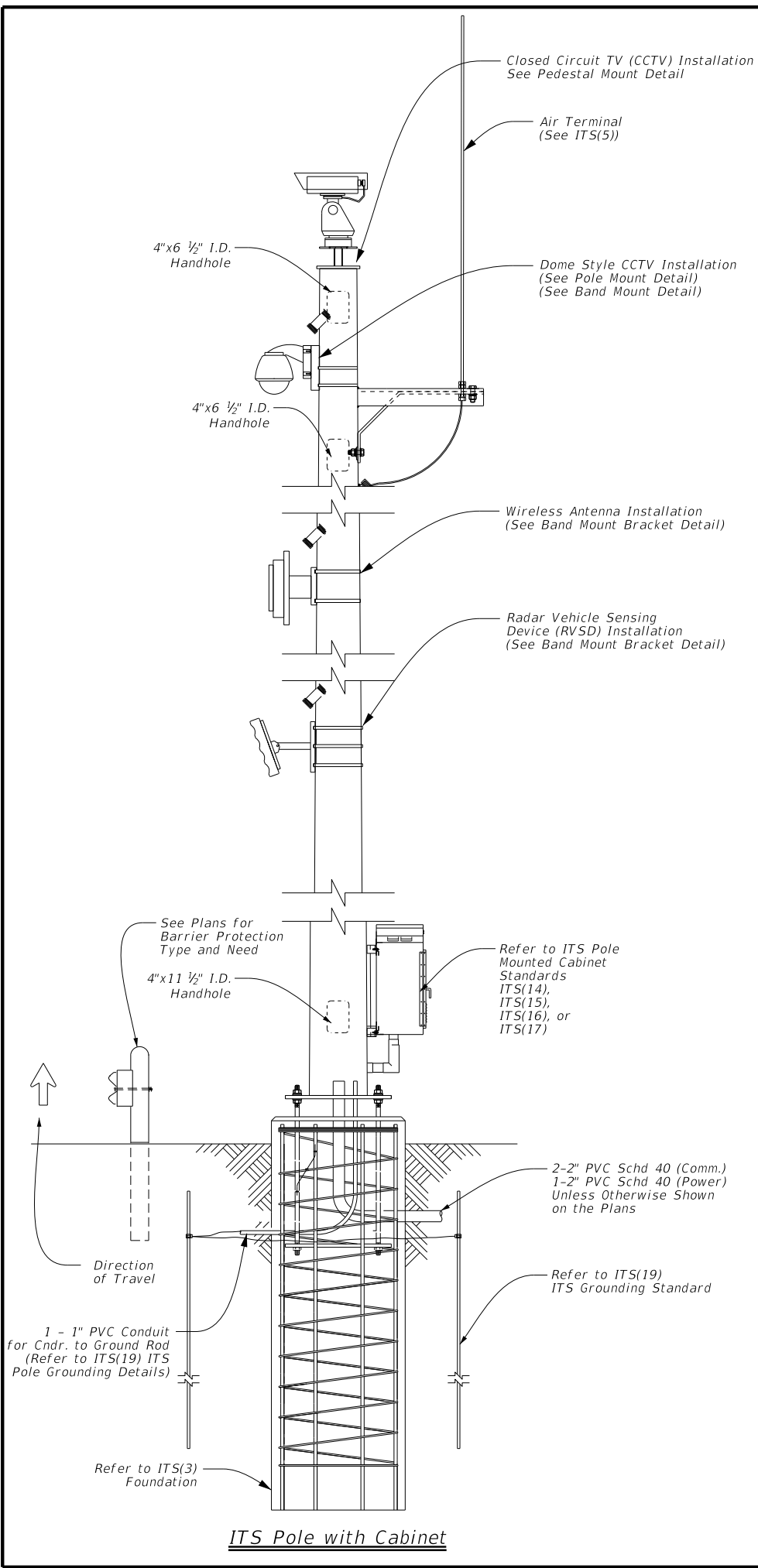


DISCLAIMER: The use of this standard is governed by the "Texas Engineering Practice Act". No warranty of any kind is made by TxDOT for any purpose whatsoever. TxDOT assumes no responsibility for the conversion of this standard to other formats or for incorrect results or damages resulting from its use.



- General Notes:**
- Designed according to Sixth Edition AASHTO Standard Specifications for Structural Supports for Highway Signs, Luminaires, and Traffic Signals and Interim Specifications.
  - Hang all cabling inside ITS pole structure with stainless steel wire mesh grips.
  - Bolt positioning in the pedestal top plate (Plate "A") for the pan/tilt base must be determined in the field per camera manufacturers recommendations. This will allow positioning of the camera to maximize coverage area. The Engineer will determine the camera's blind zone at each location.
  - Provide pedestal top plate and Plate "A" that conform to ASTM A36.
  - Make all welds conform to Item 441 and AWS D1.1 (Structural Welding). Repair damaged galvanized coating per Item 445, "Galvanizing."
  - Galvanize parts in accordance with Item 445, "Galvanizing" unless otherwise noted.
  - The type of ITS equipment shown to be mounted to the ITS pole is intended to represent the most common ITS equipment applications and should not be treated as all inclusive. Other ITS equipment applications may exist that are project specific.
  - Mounting brackets are intended to be diagrammatic and for information only, and are not all inclusive. Contractor responsible for submitting mounting bracket design for approval by the Engineer prior to fabrication. Mounting bracket designed to support a maximum 35 Lbs. Off-the-shelf mounting brackets are acceptable and shall be submitted by shop drawing for approval.
  - Mounting heights to be determined in the field based on manufacturer recommendations.

Texas Department of Transportation  
Traffic Operations Division Standard

## ITS POLE EQUIPMENT MOUNTING DETAILS

### ITS(6) - 15

|                     |           |           |           |           |
|---------------------|-----------|-----------|-----------|-----------|
| FILE: its(6)-15.dgn | DN: TxDOT | CK: TxDOT | DW: TxDOT | CK: TxDOT |
| © TxDOT June 2015   | CONT      | SECT      | JOB       | HIGHWAY   |
| REVISIONS           |           |           |           |           |
|                     | DIST      | COUNTY    |           | SHEET NO. |