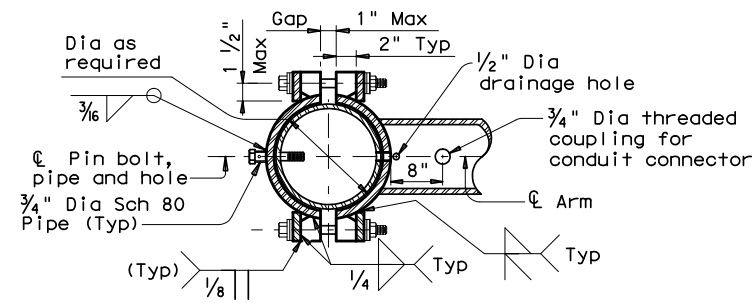
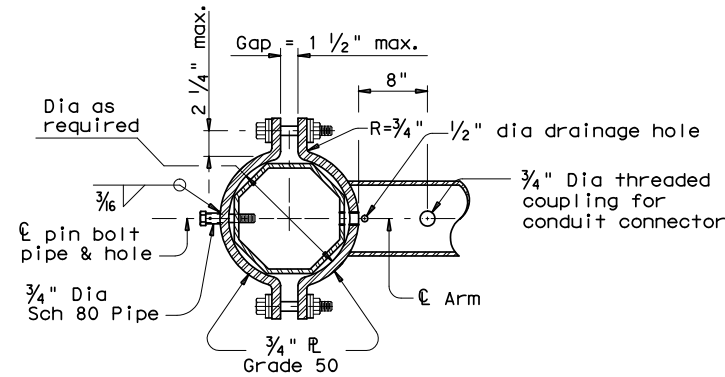


DISCLAIMER: The use of this standard is governed by the "Texas Engineering Practice Act". No warranty of any kind is made by TxDOT for any purpose whatsoever. TxDOT assumes no responsibility for the conversion of this standard to other formats or for incorrect results or damages resulting from its use.

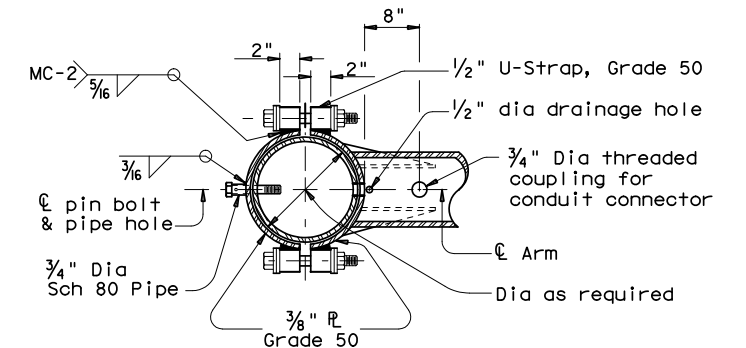
TABLE OF DIMENSIONS for ILSN Support Arm Clamp-on Details 1, 2 and 3						
ILSN ARM SIZE	A		CONN. BOLTS		PIN BOLTS	
	in.	in.	No. ea.	Di. in.	No. ea.	Di. in.
3 in. dia Schedule 40 Pipe	10	4	4	3/4	2	5/8



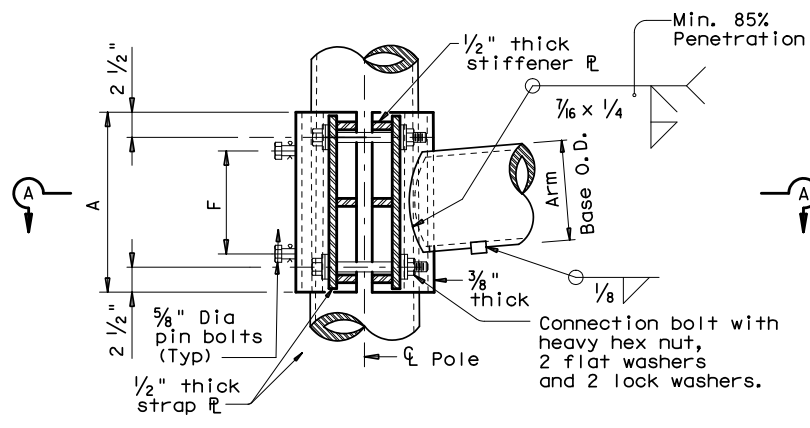
SECTION A-A



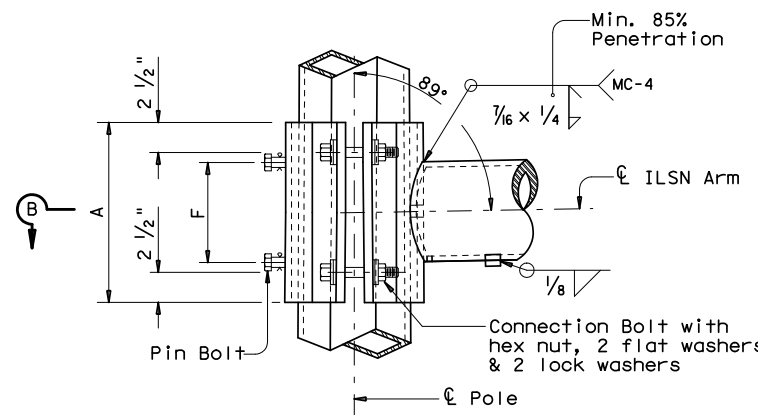
SECTION B-B



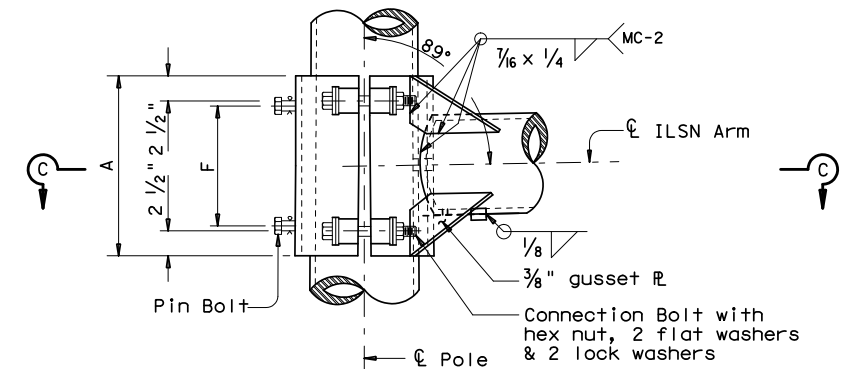
SECTION C-C



ILSN CLAMP-ON DETAIL 1



ILSN CLAMP-ON DETAIL 2



ILSN CLAMP-ON DETAIL 3

**GENERAL NOTES:**

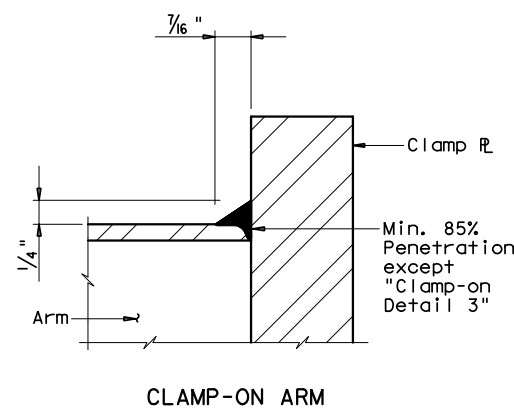
Clamp-on details shall be used for ILSN support arm assemblies. A 1 1/2 inch diameter hole shall be cut in the front clamp plate for wiring access. A matched hole shall be field drilled through the pole to provide wire access after arm is oriented. Deburr both holes.

Where duplicate parts occur on a detail, welds shown for one part shall apply to all similar parts on the details.

Pin bolts are required to prevent rotation of clamp-on arms under design wind forces.

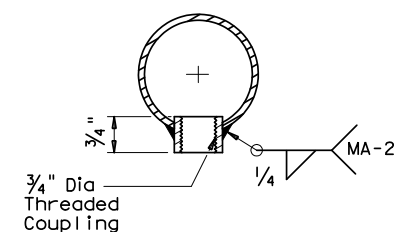
**NOTE:**

Pin bolts shall be A325 with threads excluded from the shear plane. Pin bolt and 3/4 inch diameter pipe shall have 3/16 inch diameter holes for a 1/8 inch diameter galvanized cotter pin. Back clamp plate shall be furnished with a 3/4 inch diameter hole for each pin bolt. An 11/16 inch diameter hole for each pin bolt shall be field drilled through the pole after arm orientations have been approved by the Engineer.



CLAMP-ON ARM

ARM BASE WELD DETAILS



ILSN ARM COUPLING DETAIL

Texas Department of Transportation  
Traffic Operations Division

**STANDARD ASSEMBLY  
FOR TRAFFIC SIGNAL  
SUPPORT STRUCTURES**

MAST-ARM CONNECTIONS

MA-C (ILSN) - 12

© TxDOT August 1995	DN: MS	CK: JSY	DW: MMF	CK: JSY
5-96 1-12	REVISIONS	CONT	SECT	JOB
				HIGHWAY
		DIST	COUNTY	SHEET NO.