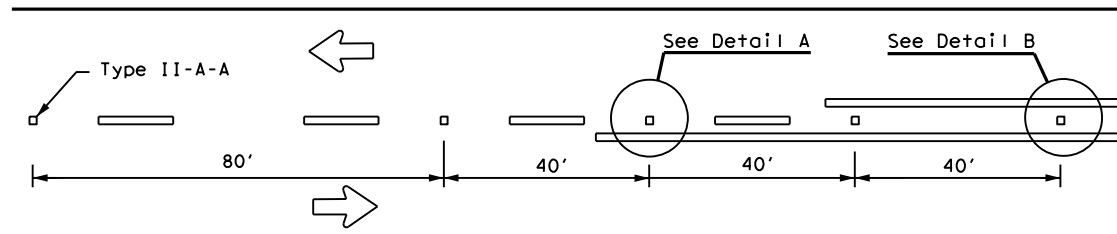
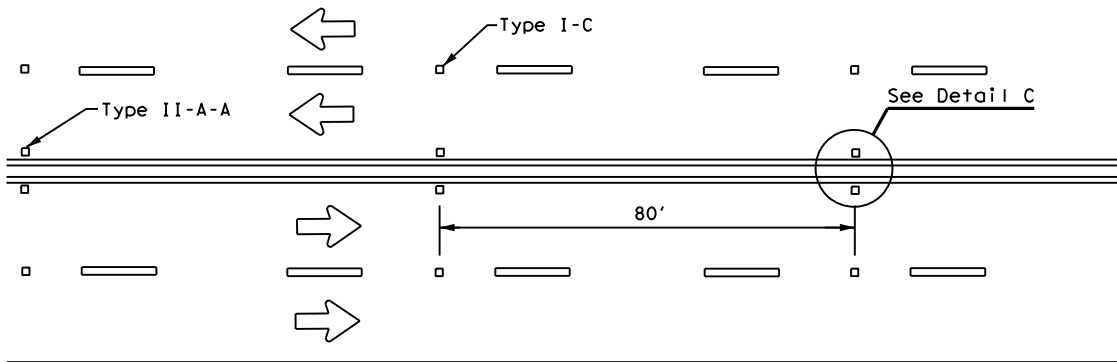


# REFLECTIVE RAISED PAVEMENT MARKERS FOR VEHICLE POSITIONING GUIDANCE

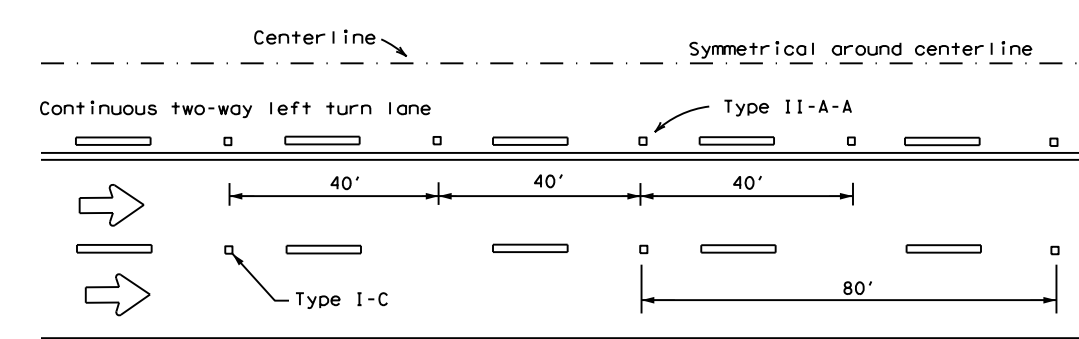
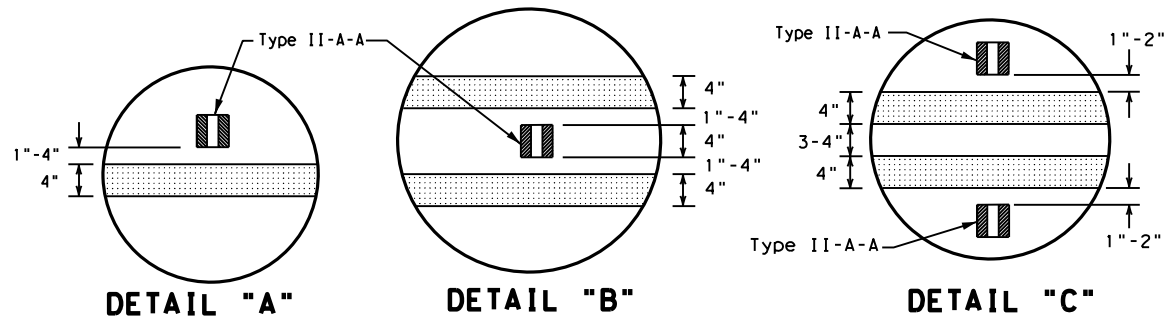
DISCLAIMER: The use of this standard is governed by the "Texas Engineering Practice Act". No warranty of any kind is made by TxDOT for any purpose whatsoever. TxDOT assumes no responsibility for the conversion of this standard to other formats or for incorrect results or damages resulting from its use.



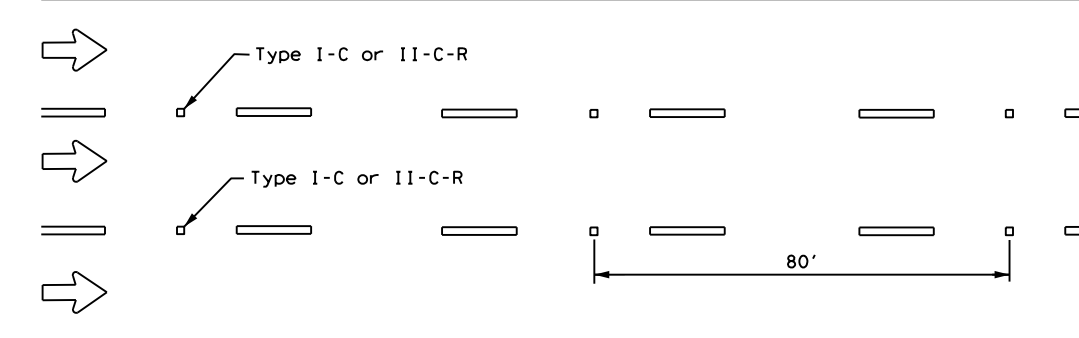
**CENTERLINE FOR ALL TWO LANE ROADWAYS**



**CENTERLINE & LANE LINES  
FOR FOUR LANE TWO-WAY HIGHWAYS**



**CENTERLINE AND LANE LINES FOR TWO-WAY LEFT TURN LANE**

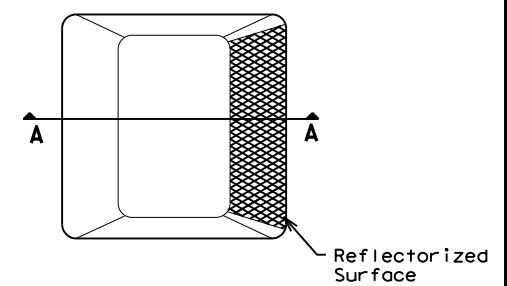


**LANE LINES FOR ONE-WAY ROADWAY (NON-FREEWAY FACILITIES)**

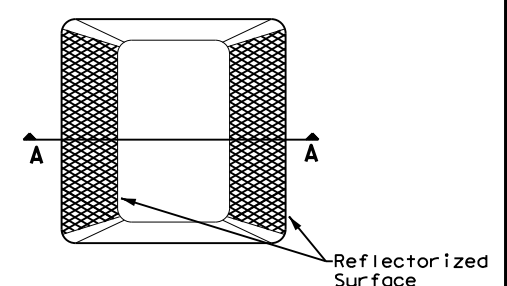
Raised pavement markers Type II-C-R shall have clear face toward normal traffic and red face toward wrong-way traffic.

MATERIAL SPECIFICATIONS	
PAVEMENT MARKERS (REFLECTORIZED)	DMS-4200
EPOXY AND ADHESIVES	DMS-6100
BITUMINOUS ADHESIVE FOR PAVEMENT MARKERS	DMS-6130
TRAFFIC PAINT	DMS-8200
HOT APPLIED THERMOPLASTIC	DMS-8220
PERMANENT PREFABRICATED PAVEMENT MARKINGS	DMS-8240

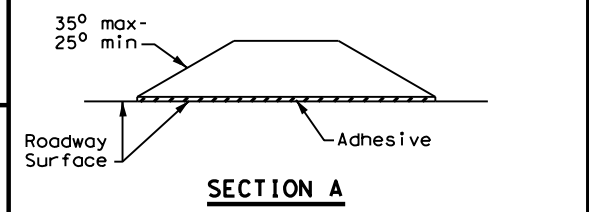
All pavement marking materials shall meet the required Departmental Material Specifications as specified by the plans.



**Type I (Top View)**



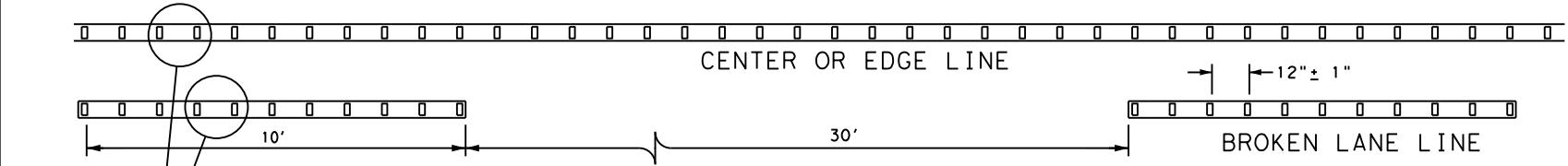
**Type II (Top View)**



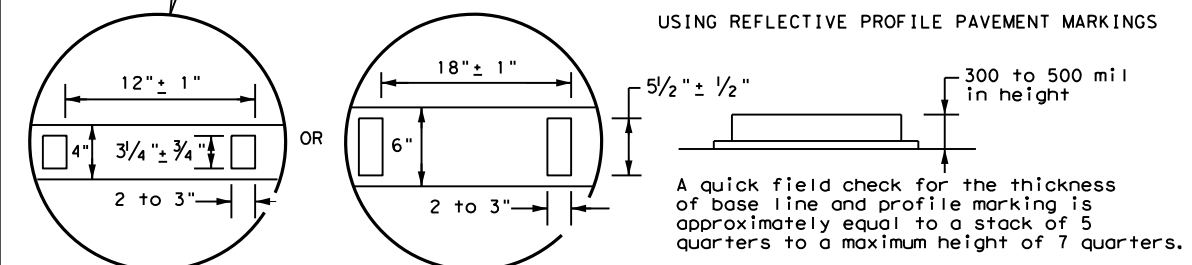
**RAISED PAVEMENT MARKERS**

**GENERAL NOTES**

1. All raised pavement markers placed in broken lines shall be placed in line with and midway between the stripes.
2. On concrete pavements the raised pavement markers should be placed to one side of the longitudinal joints.



**REFLECTORIZED PROFILE  
PATTERN DETAIL  
USING REFLECTIVE PROFILE PAVEMENT MARKINGS**



**NOTE**  
Profile markings shall not be placed on roadways with a posted speed limit of 45 MPH or less.



## POSITION GUIDANCE USING RAISED MARKERS REFLECTORIZED PROFILE MARKINGS PM(2) - 20

FILE: pm2-20.dgn	DN:	CK:	DW:	CK:
© TxDOT April 1977	CONT	SECT	JOB	HIGHWAY
4-92 2-10	REVISIONS			
5-00 2-12	DIST	COUNTY	SHEET NO.	
8-00 6-20				

DATE:  
FILE: