

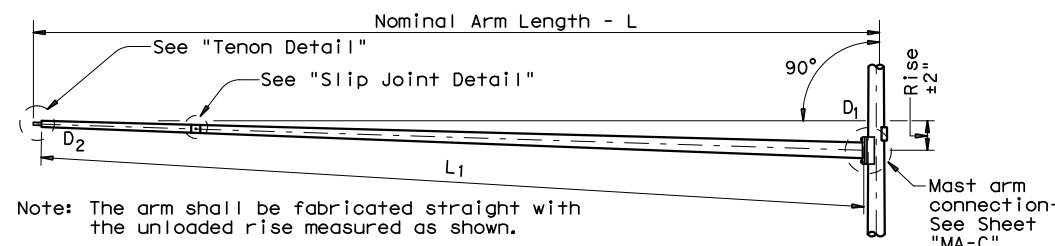
DISCLAIMER: The use of this standard is governed by the "Texas Engineering Practice Act". No warranty of any kind is made by TxDOT for any purpose whatsoever. TxDOT assumes no responsibility for the conversion of this standard to other formats or for incorrect results or damages resulting from its use.

Arm Length ft.	ROUND POLES					POLYGONAL POLES					Foundation Type
	D _B in.	D ₁₉ in.	D ₂₄ in.	D ₃₀ in.	① thk in.	D _B in.	D ₁₉ in.	D ₂₄ in.	D ₃₀ in.	① thk in.	
20	12.0	9.3	8.6	7.8	.239	12.5	9.5	8.7	7.8	.239	36-A
24	12.0	9.3	8.6	7.8	.239	13.0	10.0	9.2	8.3	.239	36-A
28	12.0	9.3	8.6	7.8	.239	13.5	10.5	9.7	8.8	.239	36-A
32	13.0	10.3	9.6	8.8	.239	14.0	11.0	10.2	9.3	.239	36-A
36	13.5	10.8	10.1	9.3	.239	15.0	12.0	11.2	10.3	.239	36-A
40	14.0	11.3	10.6	9.8	.239	16.0	13.0	12.2	11.3	.239	36-B
44	14.5	11.8	11.1	10.3	.239	16.5	13.5	12.7	11.8	.239	36-B

Arm Length ft.	ROUND ARMS					POLYGONAL ARMS				
	L ₁ ft.	D ₁ in.	D ₂ in.	① thk in.	Rise	L ₁ ft.	D ₁ in.	② D ₂ in.	① thk in.	Rise
20	19.1	8.0	5.3	.179	1'-8"	19.1	8.0	3.5	.179	1'-7"
24	23.1	9.0	5.8	.179	1'-9"	23.1	9.0	3.5	.179	1'-8"
28	27.1	9.5	5.7	.179	1'-10"	27.1	10.0	3.5	.179	1'-9"
32	31.0	9.5	5.2	.239	1'-11"	31.0	9.5	3.5	.239	1'-10"
36	35.0	10.0	5.1	.239	2'-0"	35.0	10.0	3.5	.239	1'-11"
40	39.0	10.5	5.1	.239	2'-3"	39.0	11.0	3.5	.239	2'-1"
44	43.0	11.0	5.1	.239	2'-8"	43.0	11.5	4.0	.239	2'-3"

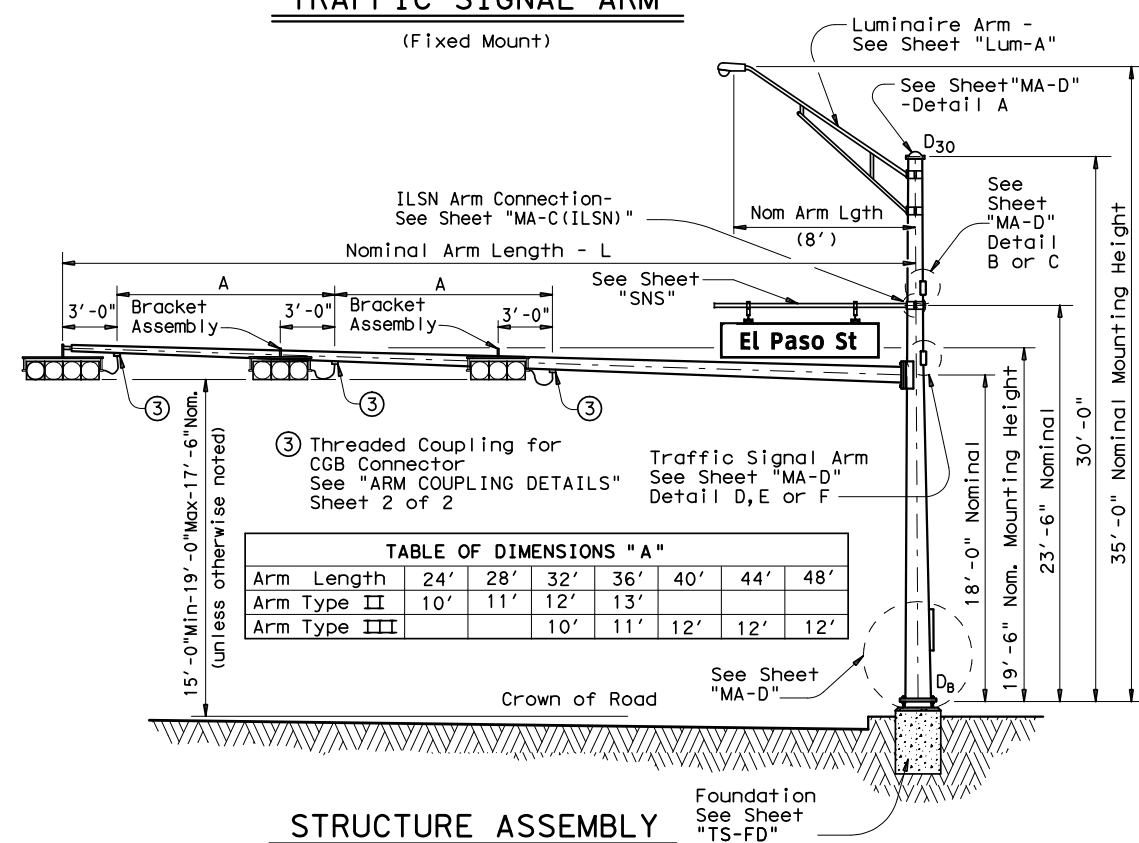
D_B = Pole Base O.D.
D₁₉ = Pole Top O.D. with no Luminaire and no ILSN
D₂₄ = Pole Top O.D. with ILSN w/out Luminaire
D₃₀ = Pole Top O.D. with Luminaire
D₁ = Arm Base O.D.
D₂ = Arm End O.D.
L₁ = Shaft Length
L = Nominal Arm Length

- ① Thickness shown are minimums, thicker materials may be used.
- ② D₂ may be increased by up to 1" for polygonal arms.



Note: The arm shall be fabricated straight with the unloaded rise measured as shown.

TRAFFIC SIGNAL ARM
(Fixed Mount)



Arm Length	24'	28'	32'	36'	40'	44'	48'
Arm Type II	10'	11'	12'	13'			
Arm Type III			10'	11'	12'	12'	12'

SHIPPING PARTS LIST

Ship each pole with the following attached: enlarged hand hole, pole cap, fixed-arm connection bolts and washers and any additional hardware listed in the table.

Nominal Arm Length ft.	30' Poles With Luminaire		24' Poles With ILSN		19' Poles With No Luminaire and No ILSN	
	Designation	Quantity	Designation	Quantity	Designation	Quantity
20	20L-100		20S-100		20-100	
24	24L-100		24S-100		24-100	
28	28L-100		28S-100		28-100	
32	32L-100		32S-100		32-100	
36	36L-100		36S-100		36-100	
40	40L-100		40S-100		40-100	
44	44L-100		44S-100		44-100	

Traffic Signal Arms (1 per pole) Ship each arm with the listed equipment attached

Nominal Arm Length ft.	Type I Arm (1 Signal)		Type II Arm (2 Signals)		Type III Arm (3 Signals)	
	Designation	Quantity	Designation	Quantity	Designation	Quantity
20	20I-100					
24	24I-100		24II-100			
28	28I-100		28II-100			
32			32II-100		32III-100	
36			36II-100		36III-100	
40					40III-100	
44					44III-100	

Luminaire Arms (1 per 30' pole)

Nominal Arm Length	Quantity
8' Arm	

ILSN Arm (Max. 2 per pole) Ship with clamps, bolts and washers

Nominal Arm Length	Quantity
7' Arm	
9' Arm	

Anchor Bolt Assemblies (1 per pole)

Anchor Bolt Diameter	Anchor Bolt Length	Quantity
1 1/2"	3'-4"	
1 3/4"	3'-10"	
2"	4'-3"	

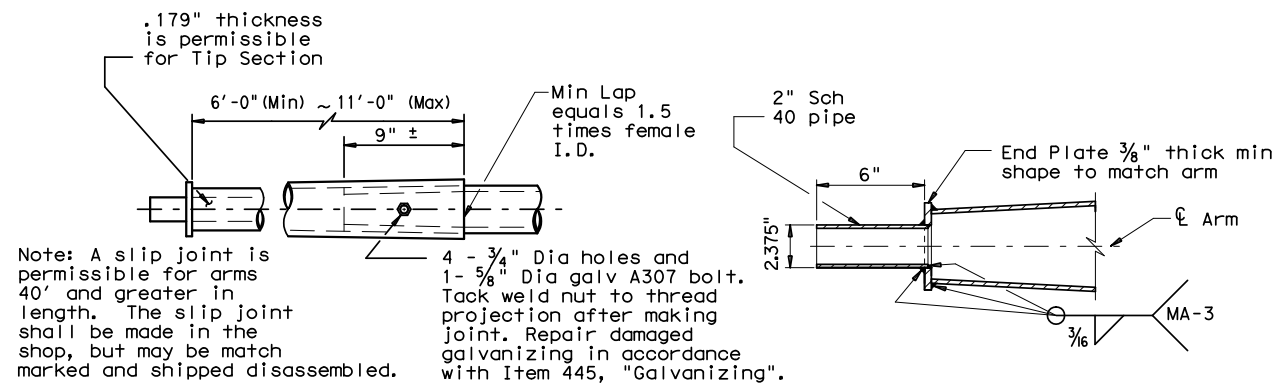
Each anchor bolt assembly consists of the following: Top and Bottom templates, 4 anchor bolts, 8 nuts, 8 flat washers, and 4 nut anchor devices (Type 2) per Standard Drawing "TS-FD".

Templates may be removed for shipment.

TRAFFIC SIGNAL SUPPORT STRUCTURES
SINGLE MAST ARM ASSEMBLY
(100 MPH WIND ZONE)
SMA-100(1)-12

© TxDOT August 1995		DN: MS	CK: JSY	DW: MMF	CK: JSY
REVISIONS		CONT	SECT	JOB	HIGHWAY
5-96					
11-99					
1-12					
DIST		COUNTY		SHEET NO.	

DISCLAIMER: The use of this standard is governed by the "Texas Engineering Practice Act". No warranty of any kind is made by TxDOT for any purpose whatsoever. TxDOT assumes no responsibility for the conversion of this standard to other formats or for incorrect results or damages resulting from its use.



Note: A slip joint is permissible for arms 40' and greater in length. The slip joint shall be made in the shop, but may be match marked and shipped disassembled.

4 - 3/4" Dia holes and 1 - 5/8" Dia galv A307 bolt. Tack weld nut to thread projection after making joint. Repair damaged galvanizing in accordance with Item 445, "Galvanizing".

SLIP JOINT DETAIL

TENON DETAIL

VIBRATION WARNING

Mast Arms of SMA and DMA structures and clamp-on Arms of LMA structures of approximately 40 ft or longer are subject to harmonic vertical vibrations in light wind conditions due to the aeroelastic characteristics of a few of the myriads of possible combinations of the following: signal numbers, weights and positions; existence/solidity of backplates; presence of additional attachments to the arm, such as signs and cameras; arm-wind orientation; and arm-pole stiffness.

Such vibrations may cause fatigue damage to the structure and may lead to galloping in moderate wind conditions which may further damage the structure and alarm the public. Tests have indicated that when wind is blowing toward the back side of signal heads having un-vented backplates attached the probability of unacceptable harmonic vibration and/or galloping is rather high.

If backplates are not required for improved visibility they should not be applied to the signal heads or, if they must be applied, they should be vented as a first and inexpensive measure to mitigate vibrations.

The traffic signal mast arms shall be visually inspected in 5 to 20 mph wind conditions after installation of signal heads and any attachments, including any required backplates. If vertical movements with a total excursion (maximum upward excursion to maximum downward excursion) of more than approximately 8" are observed at the arm tip, a damping plate shall be fitted to the arm. See "Damping Plate Mounting Details" on standard sheet, MA-DP-10.

This visual inspection shall be repeated after each modification of the structure that could affect its aeroelastic response. Excessive vibrations shall not be allowed to continue for more than two days.

Stainless steel bands (or Cables) and cast bracket as in "Astro-Brac", "Sky Bracket" or "Easy Bracket" with 1/2" Dia Threaded Coupling.

BRACKET ASSEMBLY

GENERAL NOTES:

Design conforms to 1994 AASHTO Standard Specifications for Structural Supports for Highway Signs, Luminaires, and Traffic Signals and Interim Specifications thereto. Design Wind Speed equals 100 mph plus a 1.3 gust factor.

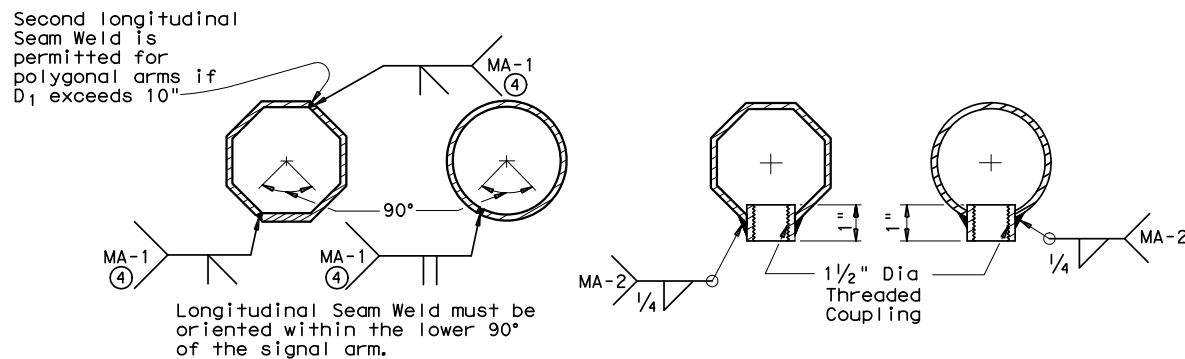
Poles are designed to support one 8'-0" luminaire arm, one 9'-0" internally lighted street name sign and one traffic signal arm with a length as tabulated. The specified luminaire load applied at the end of the luminaire arm equals 60 lbs vertical dead load plus the horizontal wind load on an effective projected area of 1.6 sq ft. The specified internally lighted street name sign load applied 4.5 ft from the centerline of the pole equals 85 lbs vertical dead load plus horizontal wind load on an effective projected area of 11.5 sq ft. The specified signal load applied at the end of the traffic signal arm equals 180 lbs vertical dead load plus the horizontal wind load on an effective projected area of 32.4 sq ft (actual area times drag coefficient).

See Standard Sheet "MA-D" for pole details, "MA-C" for traffic signal arm connection details, "MA-C (ILSN)" for internally lighted street name sign arm connection details, "LUM-A" for luminaire arm and connection details, "SNS" for internally lighted street name sign details, and "TS-FD" for anchor bolt and foundation details. See "MA-C" for material specifications.

Fabrication shall be in accordance with Item 686, "Traffic Signal Pole Assemblies (Steel)" and with the details, dimensions, and weld procedures shown herein. Weld references call for preapproved weld procedures which the Fabricator must obtain prior to fabrication. Materials, fabrication tolerances, and shipping practices shall meet the requirements of this sheet and Item 686, "Traffic Signal Pole Assemblies (Steel)".

Unless otherwise noted, all parts shall be galvanized in accordance with Item 445, "Galvanizing", after fabrication.

Deviation from the details and dimensions shown herein require submission of shop drawings in accordance with Item 441, "Steel Structures". Alternate designs are not acceptable.



ARM WELD DETAIL

ARM COUPLING DETAILS

④ 60% Min. penetration
100% penetration within
6" of circumferential
base welds.

Texas Department of Transportation
 Traffic Operations Division
TRAFFIC SIGNAL
SUPPORT STRUCTURES
 SINGLE MAST ARM ASSEMBLY
 (100 MPH WIND ZONE)
SMA-100(2)-12

© TxDOT August 1995		DN: MS	CK: JSY	DW: MMF	CK: JSY
REVISIONS		CONT	SECT	JOB	HIGHWAY
5-96					
1-12					
		DIST	COUNTY		SHEET NO.