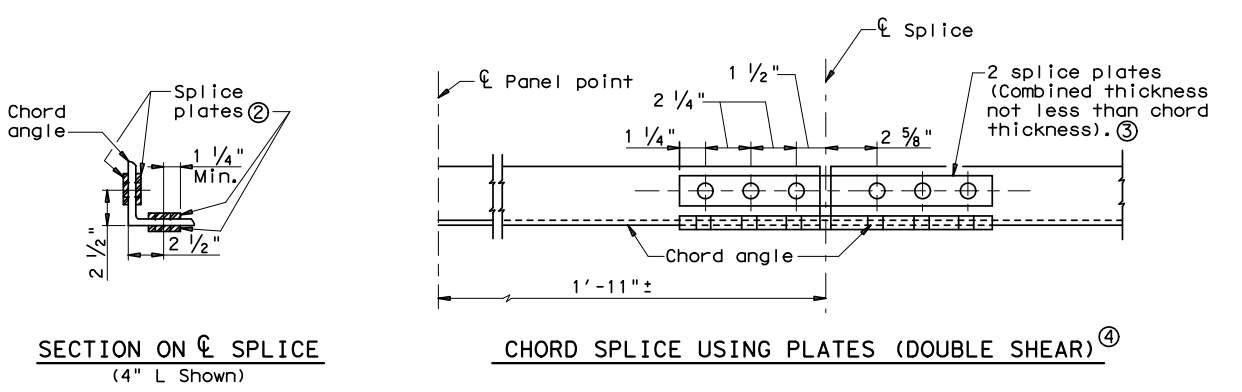
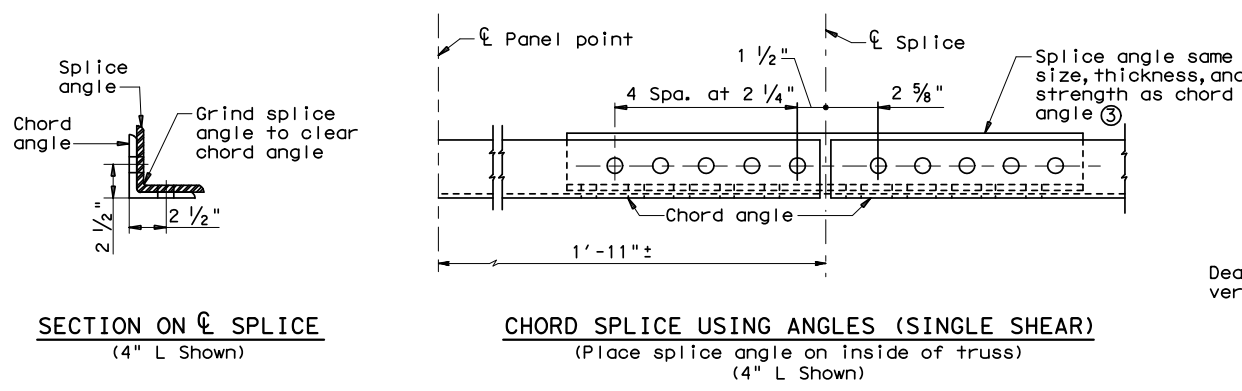
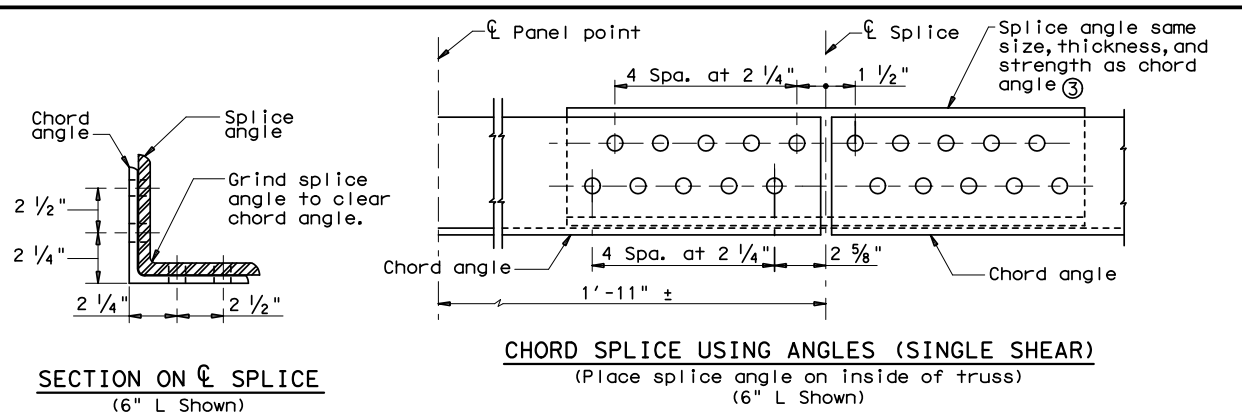
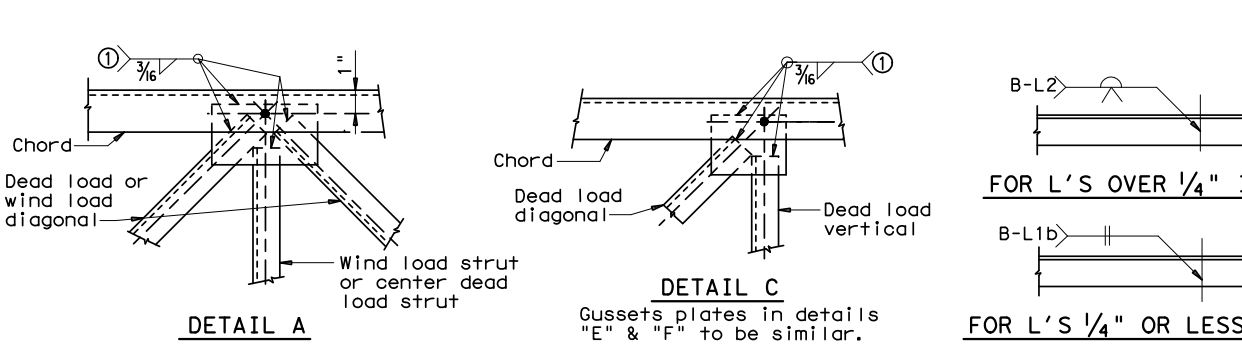


DISCLAIMER: The use of this standard is governed by the "Texas Engineering Practice Act". No warranty of any kind is made by TxDOT for any purpose whatsoever. TxDOT assumes no responsibility for the conversion of this standard to other formats or for incorrect results or damages resulting from its use.

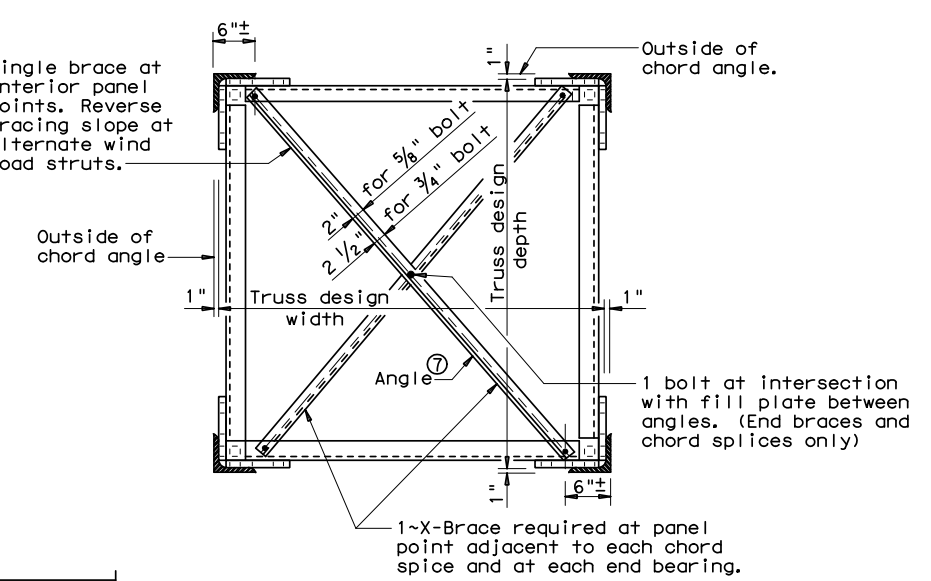
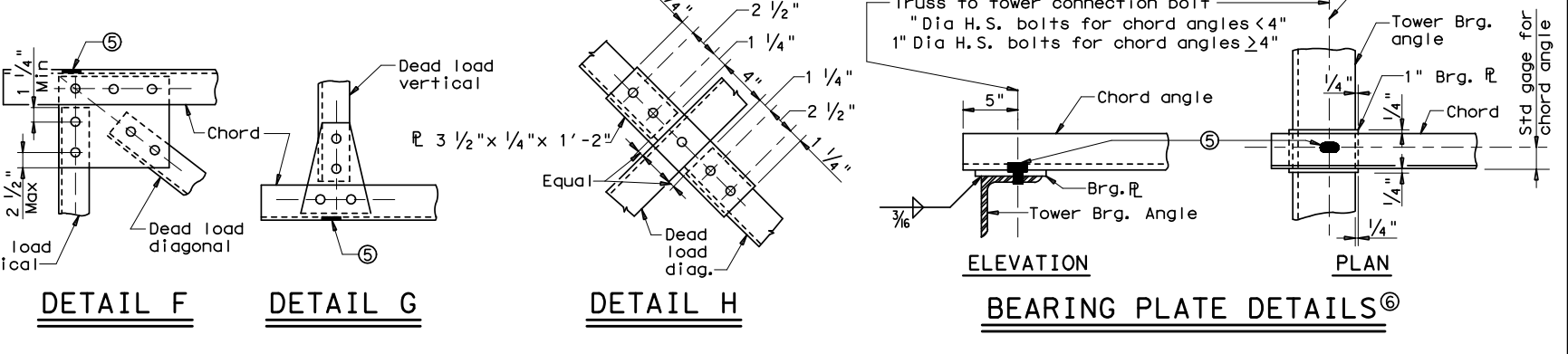
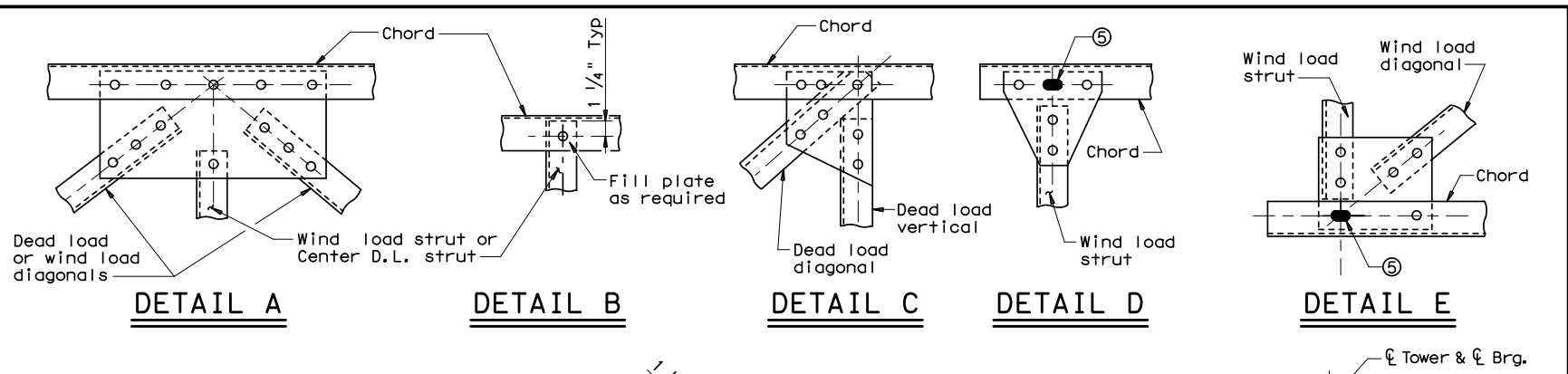


SPLICE DETAILS



ALTERNATE WELDED SPLICE AND CONNECTION DETAILS

Number of bolts	3/16" Fillet Weld Replaces:	
	5/8" Dia. Bolt	3/4" Dia. Bolt
1	2"	3"
2	4"	6"
3	6"	9"
4	8"	11 1/2"
5	10"	14 1/2"
6	12"	17 1/2"
7	14"	20"



TRUSS SECTION
(Diagonals not shown)

- ① See "TABLE OF MINIMUM WELD LENGTHS" for the length of welds.
- ② Area of splice plates shall be equal to or greater than area of chord angle.
- ③ When chord angles of different thickness are spliced, use shim plate and number of bolts required for thinner angle. For splice angle use thickness of the thinner angle.
- ④ When splice plates are used on both sides of chord angle (double shear) only half the number of bolts shown in the table on standard drawing "OVERHEAD SIGN BRIDGE DETAILS" are required.
- ⑤ Slotted hole in Gusset R and chord angle 1" x 1 1/2" slot for 3/4" dia. bolts, 1 1/4" x 2" slot for 1" dia. bolts. Use R washer on Gusset R side.
- ⑥ Bearing plate may be omitted if welded connections are used on wind truss.
- ⑦ 2" x 1 1/2" x 3/16" angle for 5/8" Dia bolts [1]
2 1/2" x 2" x 3/16" angle for 3/4" Dia bolts [1]

Total No. of Bolts in Diagonals at Joints	No. of Bolts required in Gusset R at Chord Connection	
	0	2
2	2	2
3	3	3
4	3	3
5	4	4
6	4	4
8	5	5
10	6	6
12	6	6

GENERAL NOTES:
 All bolts shall be in accordance with Item 447, "Structural Bolting".
 The truss shall have an upward camber not less than the dead load deflections shown in the table on standard drawings "Overhead Sign Bridge Details" when blocked at the ends under dead load of the truss only.
 Chord angles may be spliced in convenient lengths for galvanizing. Connection and splice details are typical only. Actual size of member and number of bolts will vary. The details shown on this sheet are intended as a guide only. See standard drawings "Overhead Sign Bridge Details" for number of bolts and size of members. Number of bolts shown for chord splice is based on single shear.
 Gusset plates to be same thickness as thickest web member in connection.

OVERHEAD SIGN BRIDGE TRUSS DETAILS

OSBC

© TxDOT November 2007	REV: TxDOT	CK: TxDOT	HW: TxDOT	CK: TxDOT
REVISIONS	CUAT	SECT	JUB	HIGHWAY
	DIST	COUNTY		SHEET NO.