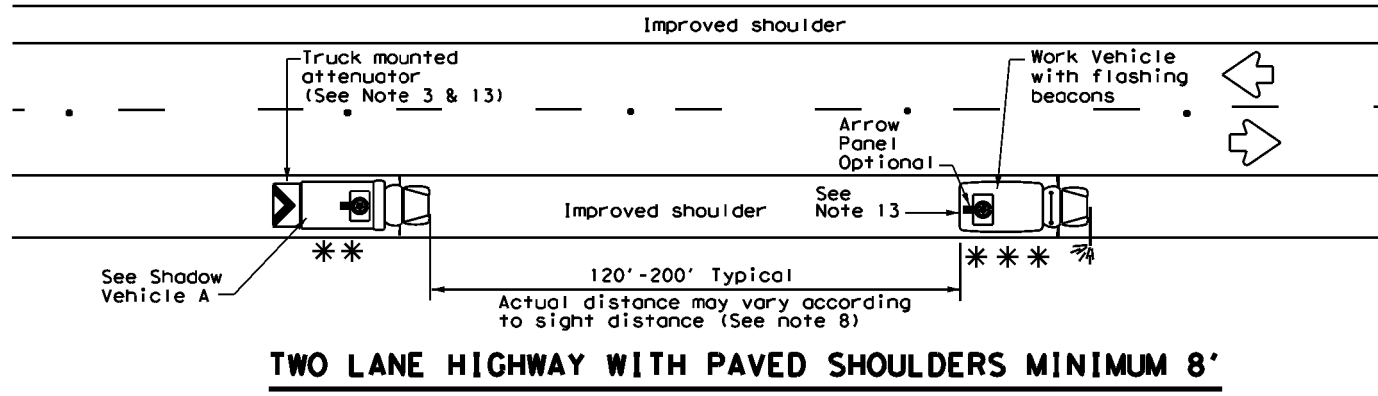
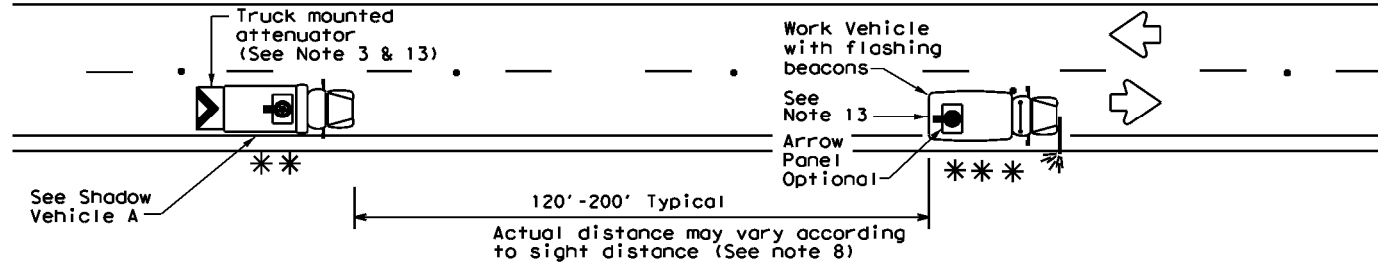


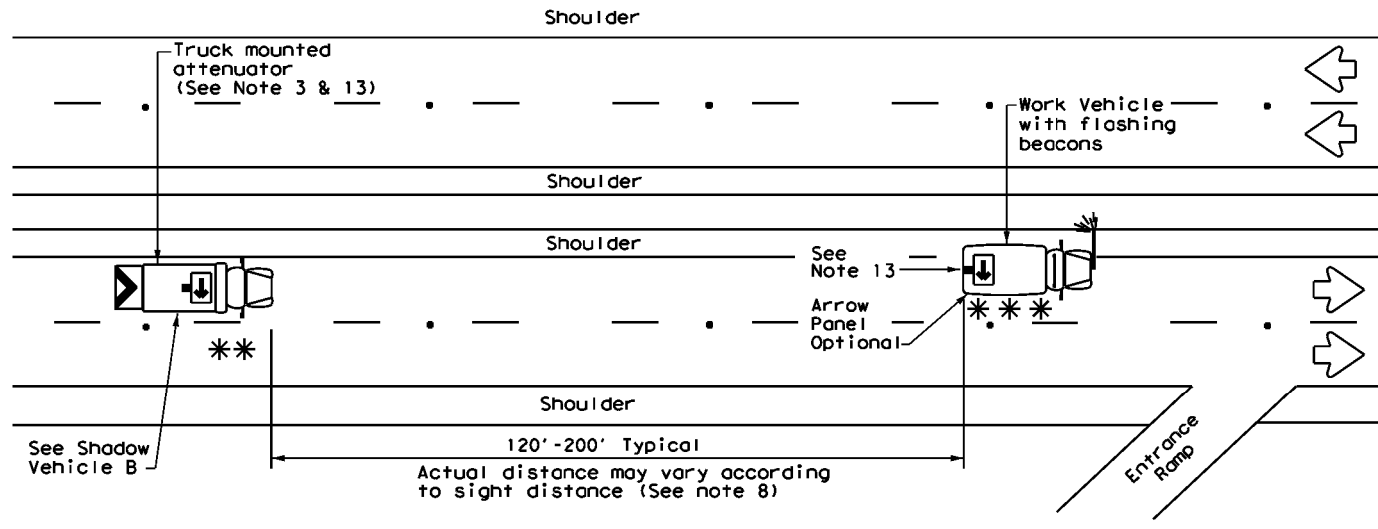
DISCLAIMER: The use of this standard is governed by the "Texas Engineering Practice Act". No warranty of any kind is made by TxDOT for any purpose whatsoever. TxDOT assumes no responsibility for the conversion of this standard to other formats or for incorrect results or damages resulting from its use.



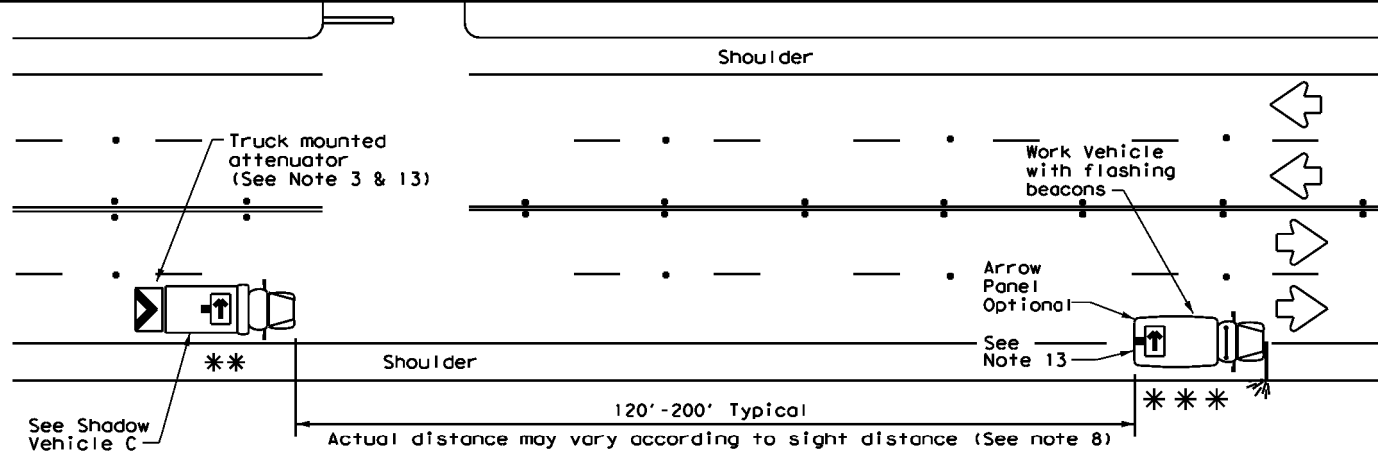
**TWO LANE HIGHWAY WITH PAVED SHOULDERS MINIMUM 8'**



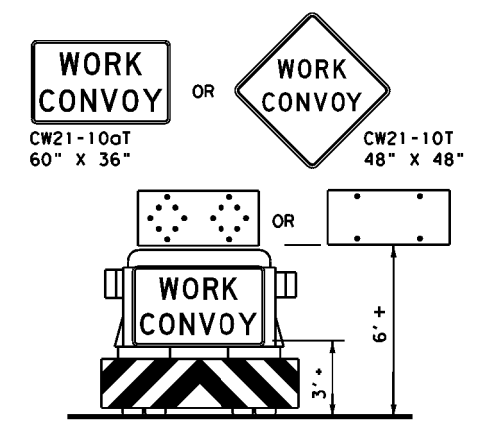
**TWO LANE HIGHWAY WITH NO SHOULDER OR NARROW SHOULDER**



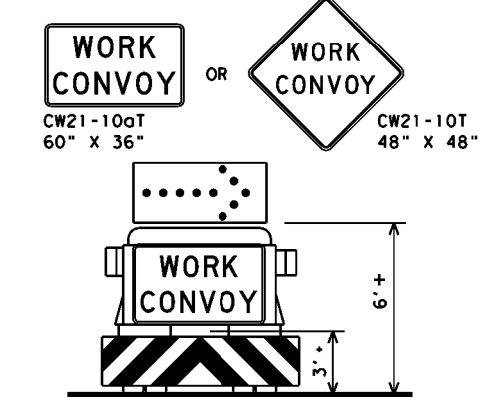
**MULTILANE HIGHWAY**



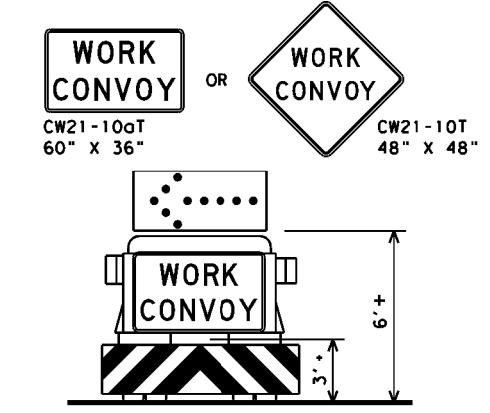
**MULTILANE HIGHWAY**



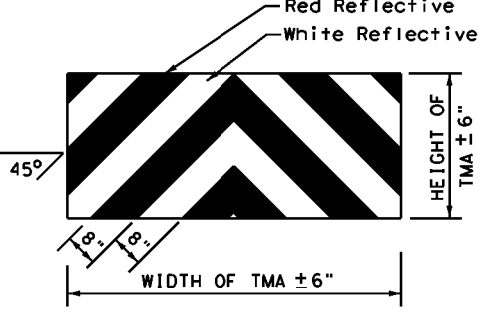
**SHADOW VEHICLE A**  
with Flashing Arrow Board in Caution Mode



**TYPICAL SHADOW VEHICLE B**  
with RIGHT Directional display  
Flashing Arrow Board



**TYPICAL SHADOW VEHICLE C**  
with LEFT Directional display  
Flashing Arrow Board



**STRIPING FOR TMA**

**LEGEND**

**	Shadow Vehicle	ARROW BOARD DISPLAY	
***	Work Vehicle		RIGHT Directional
	Sign		LEFT Directional
	Heavy Work Vehicle		Double Arrow
	Traffic Flow		CAUTION (Alternating Diamond or 4 Corner Flash)
	Truck Mounted Attenuator (TMA) or Trailer Attenuator (TA)		

**TYPICAL USAGE**

MOBILE	SHORT DURATION	SHORT TERM STATIONARY	INTERMEDIATE TERM STATIONARY	LONG TERM STATIONARY
<input checked="" type="checkbox"/>	<input type="checkbox"/>	<input type="checkbox"/>	<input type="checkbox"/>	<input type="checkbox"/>

**GENERAL NOTES**

- All traffic control devices shall be in accordance with the "Texas Manual on Uniform Traffic Control Devices" (TMUTCD), latest edition.
- The use of amber high intensity rotating, flashing, oscillating, or strobe lights on vehicles are required. Blue high intensity rotating, flashing, oscillating or strobe lights when mounted on the driver's side of the vehicle may be operated simultaneously with the amber beacons or strobe lights.
- The use of truck mounted attenuators (TMA) on the Shadow Vehicle is required.
- Striping on the back panel of all TMAs shall be 8" red reflective sheeting with white background, placed in an inverted "V" design. Reflective sheeting shall meet or exceed the reflectivity and color requirements of DEPARTMENTAL MATERIAL SPECIFICATION DMS-8300, TYPE A.
- Flashing Arrow Panels shall be Type B or Type C as per BC Standards. The panel operation shall be controlled from inside the vehicle.
- Each vehicle shall have two-way radio communication capability.
- When the work convoy must change lanes, the Shadow Vehicle should change lanes first to protect the Work Vehicle.
- Spacing between Shadow and Work Vehicle will vary depending on sight distance restrictions. Motorists approaching the work convoy should be able to see the Shadow Vehicle in time to slow down and/or change lanes as they approach the Work Convoy.
- Use of an arrow panel on the Work Vehicle is optional except as provided in note 13, but may be required by the Engineer. If an arrow panel is not used, dual flashing beacons, mounted as high and as widely separated as practicable at the rear of the Work Vehicle shall be required.
- On two-lane two-way roadways, the Work and Shadow Vehicles should pull over periodically to allow motor vehicle traffic to pass.
- Work and Shadow Vehicles should stay on the shoulder of highways having 8' or wider shoulders when possible.
- A Trail Vehicle may be added to the operation when approved by the Engineer. See TCP(3) series standards.
- The shadow vehicle may be omitted on conventional roadways when a TMA or TA and arrow panel is mounted to the herbicide vehicle. A separate shadow vehicle will be required on expressways and Freeways.

Traffic Operations Division Standard

**TRAFFIC CONTROL PLAN**  
**MOBILE OPERATIONS**  
**HERBICIDE TRUCK OPERATIONS**  
**TCP (3-5) - 18**

FILE: tcp3-5.dgn	DN: TxDOT	CK: TxDOT	DN: TxDOT	CK: TxDOT
© TxDOT July 2015	CONT	SECT	JOB	HIGHWAY
4-18	DIST	COUNTY	SHEET NO.	