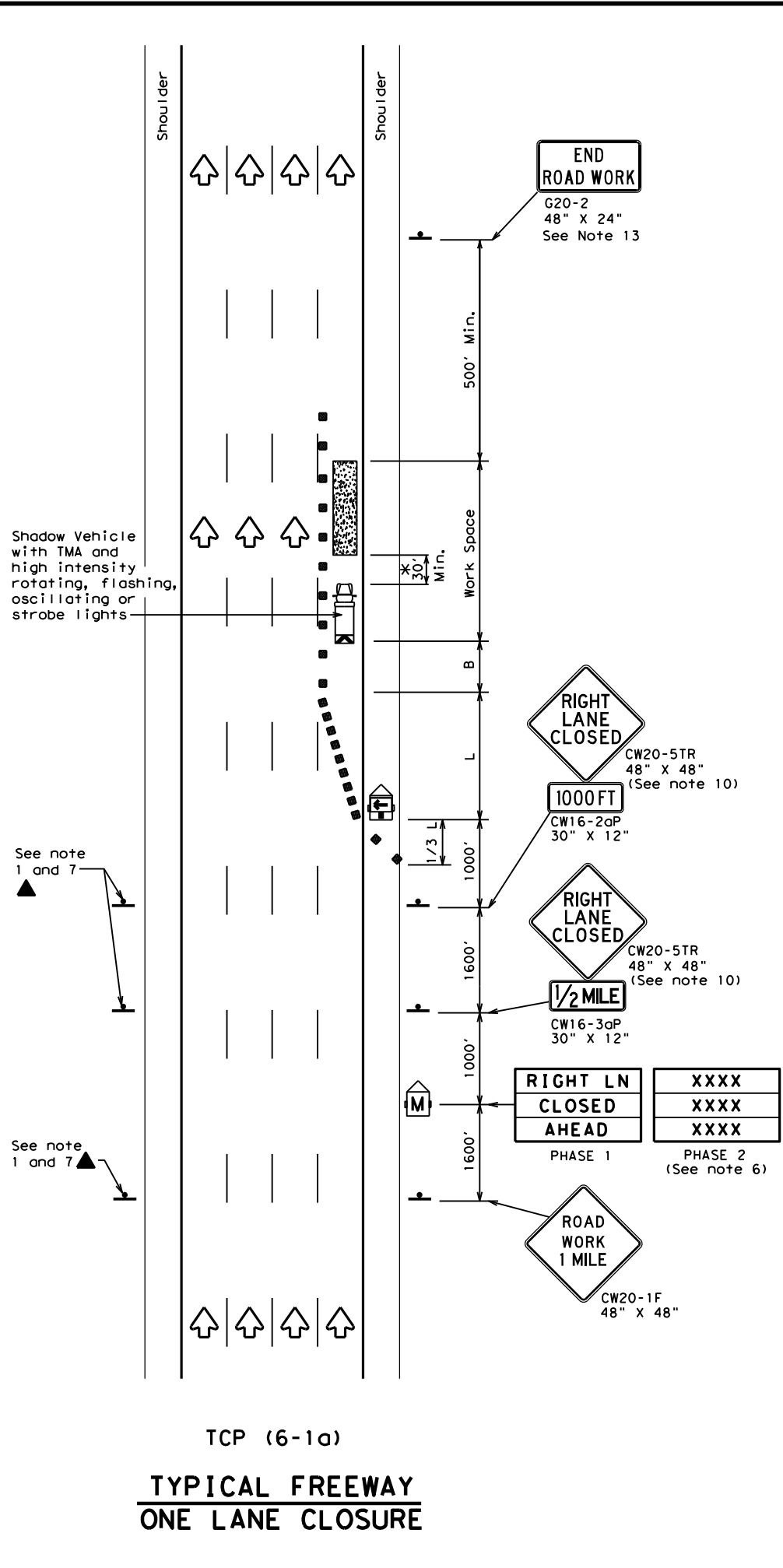
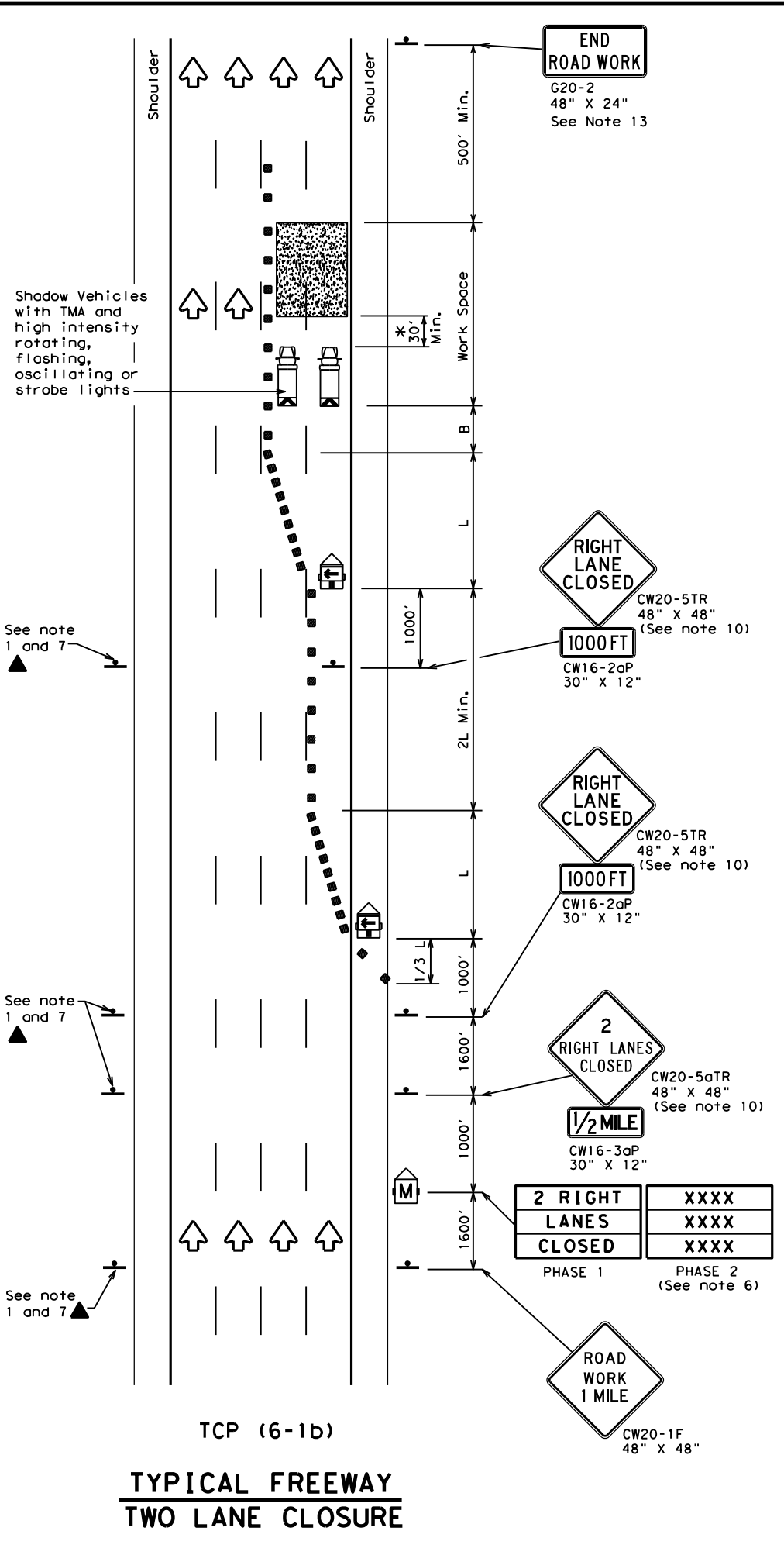


DISCLAIMER: The use of this standard is governed by the "Texas Engineering Practice Act". No warranty of any kind is made by TxDOT for any purpose whatsoever. TxDOT assumes no responsibility for the conversion of this standard to other formats or for incorrect results or damages resulting from its use.

DATE: FILE:



TCP (6-1a)
**TYPICAL FREEWAY
ONE LANE CLOSURE**



TCP (6-1b)
**TYPICAL FREEWAY
TWO LANE CLOSURE**

| LEGEND | | | |
|--------|--------------------------------------|--|---|
| | Type 3 Barricade | | Channelizing Devices |
| | Heavy Work Vehicle | | Truck Mounted Attenuator (TMA) |
| | Trailer Mounted Flashing Arrow Board | | Portable Changeable Message Sign (PCMS) |
| | Sign | | Traffic Flow |
| | Flag | | Flagger |

| Posted Speed | Formula | Minimum Desirable Taper Lengths "L" | | | Suggested Maximum Spacing of Channelizing Devices | | Suggested Longitudinal Buffer Space "B" |
|--------------|---------|-------------------------------------|------------|------------|---|--------------|---|
| | | 10' Offset | 11' Offset | 12' Offset | On a Taper | On a Tangent | |
| 45 | L = WS | 450' | 495' | 540' | 45' | 90' | 195' |
| 50 | | 500' | 550' | 600' | 50' | 100' | 240' |
| 55 | | 550' | 605' | 660' | 55' | 110' | 295' |
| 60 | | 600' | 660' | 720' | 60' | 120' | 350' |
| 65 | | 650' | 715' | 780' | 65' | 130' | 410' |
| 70 | | 700' | 770' | 840' | 70' | 140' | 475' |
| 75 | | 750' | 825' | 900' | 75' | 150' | 540' |
| 80 | 800' | 880' | 960' | 80' | 160' | 615' | |

** Taper lengths have been rounded off.
L=Length of Taper (FT) W=Width of Offset (FT) S=Posted Speed (MPH)

| TYPICAL USAGE | | | | |
|---------------|----------------|-----------------------|------------------------------|----------------------|
| MOBILE | SHORT DURATION | SHORT TERM STATIONARY | INTERMEDIATE TERM STATIONARY | LONG TERM STATIONARY |
| | ✓ | ✓ | ✓ | |

GENERAL NOTES

- All traffic control devices illustrated are REQUIRED. Devices denoted with the triangle symbol may be omitted when stated elsewhere in the plans.
- Drums or 42" cones are the typical channelizing devices. For Intermediate Term Stationary work, drums shall be used on tapers with drums or 42" cones used on tangent sections. Other channelizing devices may be used as directed by the Engineer.
- All construction signs and barricades placed during any phase of work shall remain in place until removal is approved by the Engineer.
- The Engineer may direct the Contractor to furnish additional signs and barricades as required to maintain traffic flow, detours and motorist safety during construction.
- Static message boards or changeable message signs stating the date and duration of ramp or freeway lane closures shall be placed a minimum of seven (7) calendar days in advance of the actual closure.
- Phase 2 of the PCMS message should include appropriate information formatted as shown on BC(6), such as "MERGE LEFT," recommended advisory speed, delay information, or other specific warnings.
- Duplicate construction warning signs should be erected on the medians side of freeways where median width will permit and traffic volume justifies the signing.
- The number of closed lanes may be increased provided the spacing of traffic control devices, taper lengths and tangent lengths meet the requirements of the TMUTCD.
- Warning signs for intermediate term stationary work should be mounted at 7' to the bottom of the sign.
- Warning signs shown shall be appropriately altered for left lane closures. When signs are mounted at 1' height for short term stationary or short duration work, sign versions shown in the SHSD for Texas with distances on the sign face rather than mounted on a plaque below the sign may be used.
- When possible, PCMS units should be located in advance of the last available exit ramp prior to the lane closure to allow motorists an alternate route. They may also be relocated to improve advance warning in case of unanticipated queuing or congestion.
- For Intermediate Term Stationary work at night, floodlights should be used to illuminate the work area and equipment crossings. Floodlights shall not produce a disabling glare condition for road users or workers.
- The END ROAD WORK (G20-2) sign may be omitted when it conflicts with G20-2 signs already in place on the project.

* A shadow vehicle equipped with a Truck Mounted Attenuator is typically required. A shadow vehicle equipped with a TMA shall be used if it can be positioned 30' to 100' in advance of the area of crew exposure without adversely affecting the work performance.



**TRAFFIC CONTROL PLAN
FREEWAY LANE CLOSURES**

TCP (6-1) - 12

| | | | | | | | | | |
|---------|---------------|------|-------|--------|-----------|-----|-------|-----|-------|
| FILE: | tcp6-1.dgn | DN: | TxDOT | CK: | TxDOT | DW: | TxDOT | CK: | TxDOT |
| © TxDOT | February 1998 | CONT | SECT | JOB | HIGHWAY | | | | |
| 8-12 | REVISIONS | DIST | | COUNTY | SHEET NO. | | | | |