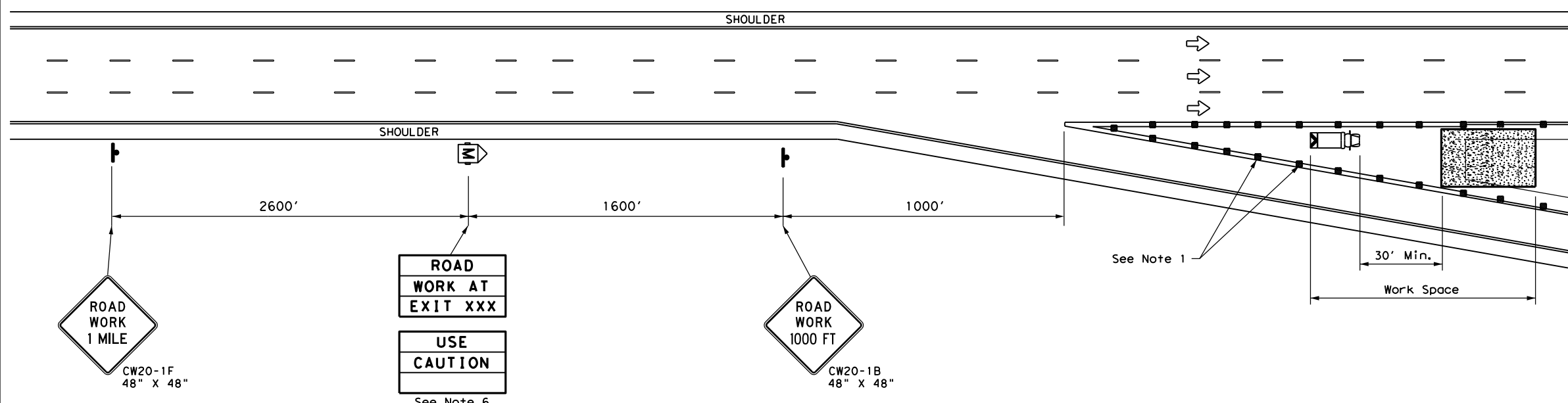
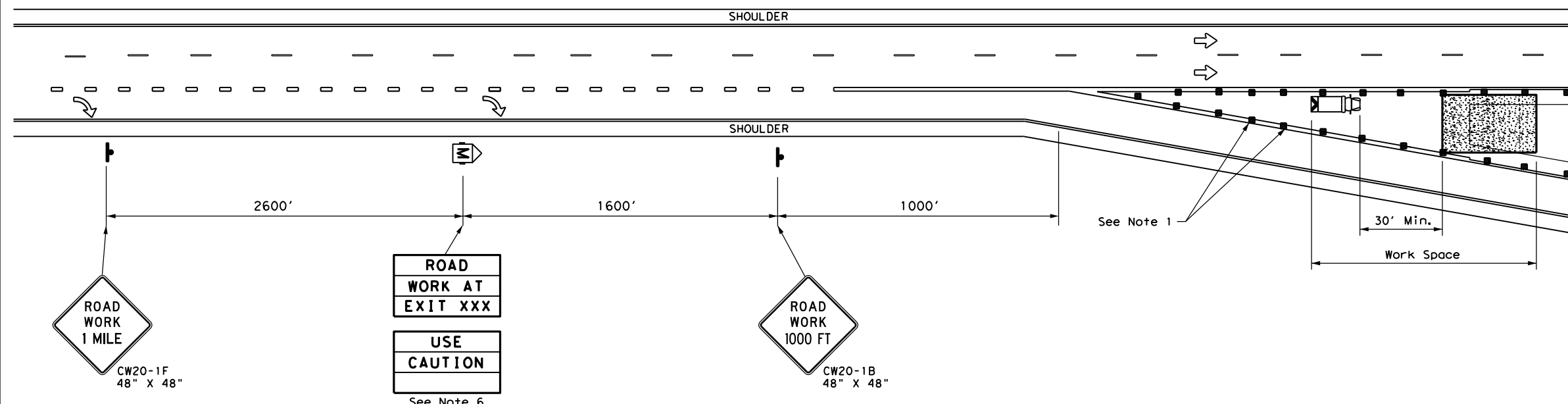


DISCLAIMER: The use of this standard is governed by the "Texas Engineering Practice Act". No warranty of any kind is made by TxDOT for any purpose whatsoever. TxDOT assumes no responsibility for the conversion of this standard to other formats or for incorrect results or damages resulting from its use.

DATE:
FILE:



TCP (6-9a)



TCP (6-9b)

| LEGEND | | | |
|--------|--------------------------------------|--|---|
| | Type 3 Barricade | | Channelizing Devices (CDs) |
| | Heavy Work Vehicle | | Truck Mounted Attenuator (TMA) |
| | Trailer Mounted Flashing Arrow Board | | Portable Changeable Message Sign (PCMS) |
| | Sign | | Traffic Flow |
| | Flag | | Flagger |

| Posted Speed | Formula | Minimum Desirable Taper Lengths "L" ** | | | Suggested Maximum Spacing of Channelizing Devices | | Suggested Longitudinal Buffer Space "B" |
|--------------|---------|--|------------|------------|---|--------------|---|
| | | 10' Offset | 11' Offset | 12' Offset | On a Taper | On a Tangent | |
| 45 | L = WS | 450' | 495' | 540' | 45' | 90' | 195' |
| 50 | | 500' | 550' | 600' | 50' | 100' | 240' |
| 55 | | 550' | 605' | 660' | 55' | 110' | 295' |
| 60 | | 600' | 660' | 720' | 60' | 120' | 350' |
| 65 | | 650' | 715' | 780' | 65' | 130' | 410' |
| 70 | | 700' | 770' | 840' | 70' | 140' | 475' |
| 75 | | 750' | 825' | 900' | 75' | 150' | 540' |
| 80 | | 800' | 880' | 960' | 80' | 160' | 615' |

** Taper lengths have been rounded off.
L=Length of Taper (FT) W=Width of Offset (FT)
S=Posted Speed (MPH)

| TYPICAL USAGE | | | | |
|---------------|----------------|-----------------------|------------------------------|----------------------|
| MOBILE | SHORT DURATION | SHORT TERM STATIONARY | INTERMEDIATE TERM STATIONARY | LONG TERM STATIONARY |
| | ✓ | ✓ | | |

- GENERAL NOTES**
- Place channelizing devices in the gore at 20' spacing.
 - See the Standard Highway Sign Design for Texas (SHSD) for sign details.
 - The PCMS may be omitted when a permanent DMS sign is available in an appropriate location to display a similar message as called for on the PCMS.
 - When it is determined that a through lane should be closed in addition to the exit ramp, refer to TCP (6-4) and TCP (6-8) for traffic control details.
 - Truck mounted attenuators are required.
 - The PCMS may be omitted if replaced with a "ROAD WORK 1/2 MILE" (CW20-1E).
 - Roadway ADT should be less than 10,000.



WORK IN EXIT GORE FOR ADT LESS THAN 10,000

TCP (6-9) - 14

| | | | | |
|-----------------------|-----------|-----------|-----------|-----------|
| FILE: tcp6-9.dgn | DN: TxDOT | CK: TxDOT | DW: TxDOT | CR: TxDOT |
| © TxDOT February 2014 | CONT | SECT | JOB | HIGHWAY |
| REVISIONS | DIST | COUNTY | SHEET NO. | |