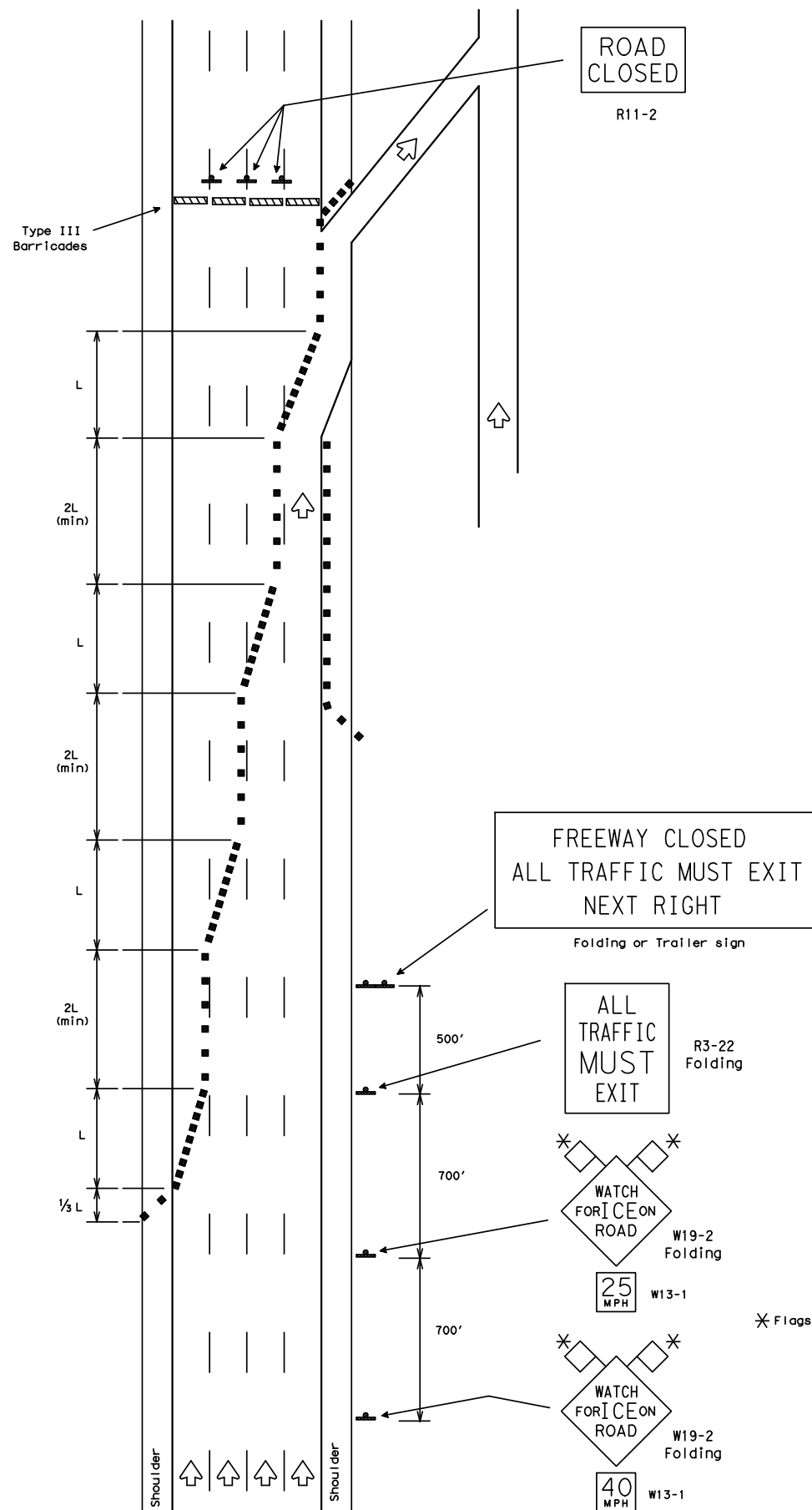
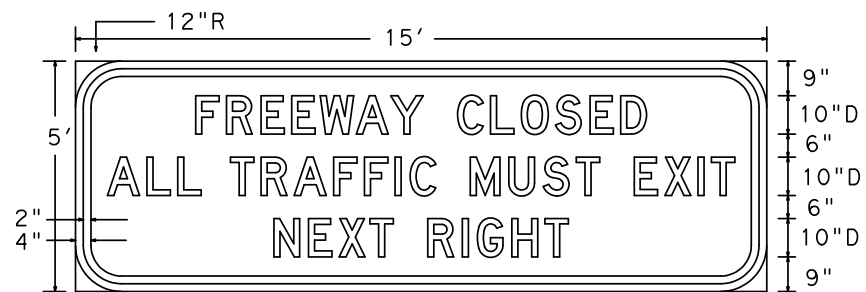


DISCLAIMER: The use of this standard is governed by the "Texas Engineering Practice Act". No warranty of any kind is made by TxDOT for any purpose whatsoever. TxDOT assumes no responsibility for the conversion of this standard to other formats or for incorrect results or damages resulting from its use.

DATE:
FILE:



Complete Road Closure

LEGEND

- Type III Barricade
- Channelizing Devices
- Flag
- Heavy Work Vehicle
- Truck Mounted Attenuator
- Trailer Mounted Flashing Arrow Panel (arrow mode)
- Portable Changeable Message Sign
- Trailer Mounted Flashing Arrow Panel (caution mode)
- Flagger
- Sign Post

Posted Speed	Formula	Minimum Desirable Taper Lengths **			Suggested Maximum Spacing of Device	
		10' Offset	11' Offset	12' Offset	On a Taper	On a Tangent
30	$L = \frac{WS^2}{60}$	150'	165'	180'	30'	60' - 75'
35		205'	225'	245'	35'	70' - 90'
40		265'	295'	320'	40'	80' - 100'
45	L=WS	450'	495'	540'	45'	90' - 110'
50		500'	550'	600'	50'	100' - 125'
55		550'	605'	660'	55'	110' - 140'
60		600'	660'	720'	60'	120' - 150'
65		650'	715'	780'	65'	130' - 165'
70		700'	770'	840'	70'	140' - 175'

**Taper lengths have been rounded off.
L=Length of Taper (FT.) W=Width of Offset (FT.) S=Posted Speed (MPH)

GENERAL NOTES:

1. Channelizing devices may be cones, drums or combination thereof. Devices shall be reflectorized for nighttime usage.
2. Emergency conditions and the necessity of the freeway's closure as quickly as possible allows the Engineer to authorize reduced length tapers and tangents of channelizing devices.

ENGINEER SEAL

Date _____

Sign: _____

Texas Department of Transportation
Traffic Operations Division

**TRAFFIC CONTROL PLAN
EMERGENCY ROAD CLOSURE
(ICE CONDITIONS)**

© TxDOT October 1997		By: TxDOT	Checked: TxDOT	Drawn: TxDOT	Checked: TxDOT
REVISIONS		CUAT	SECT	JUP	HIGHWAY
		DIST	COUNTY		SHEET NO.