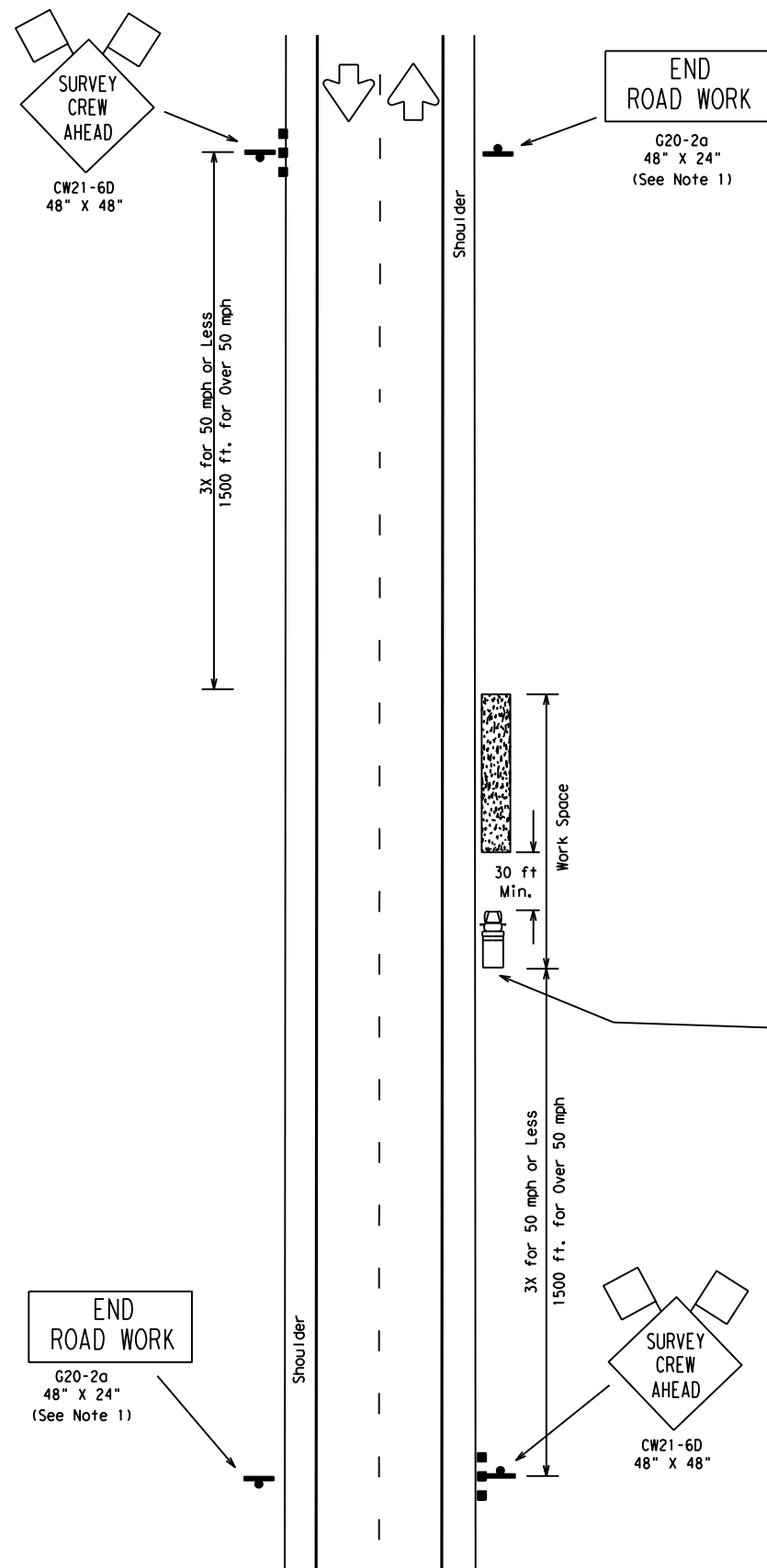
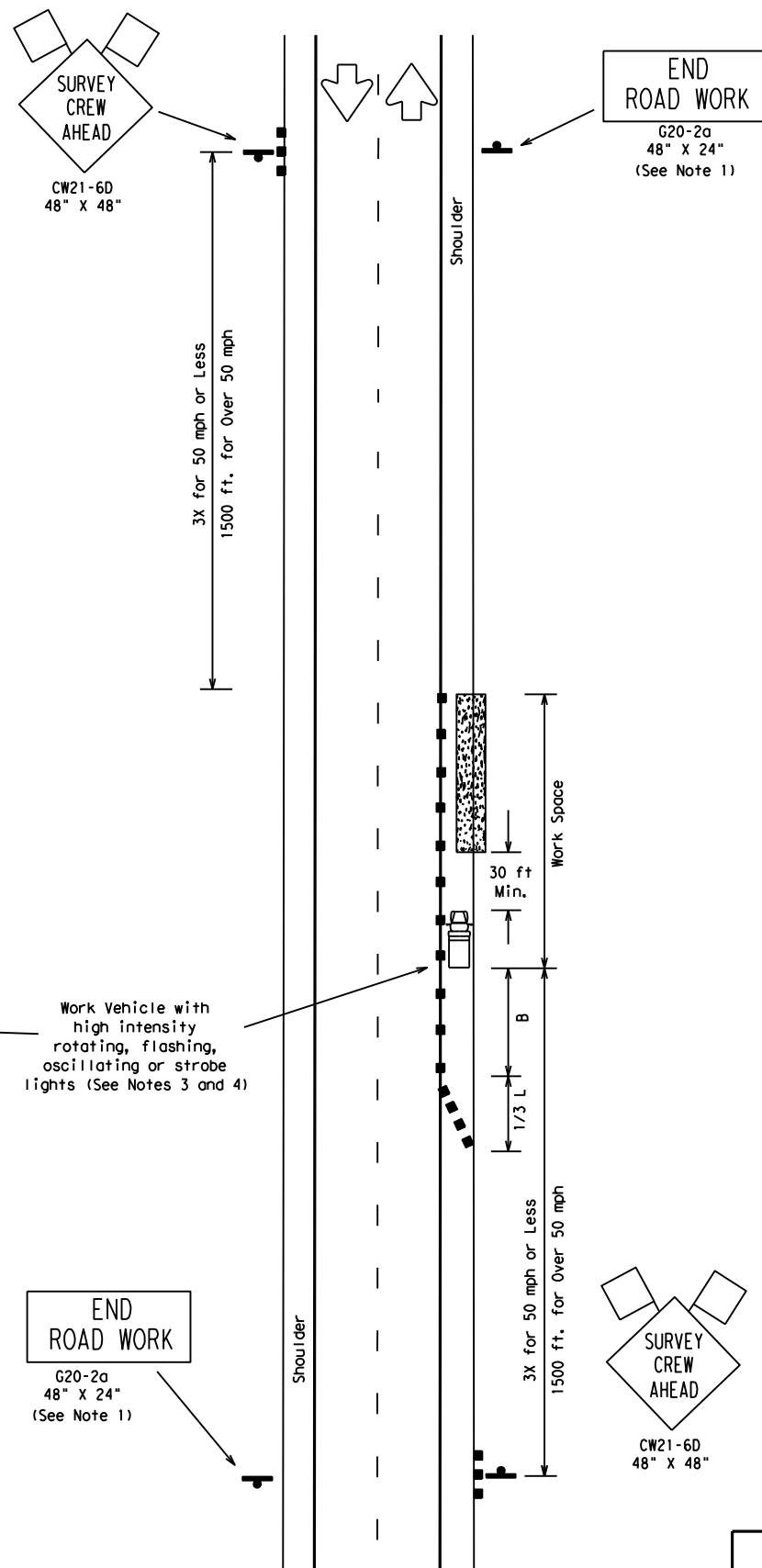


DISCLAIMER: The use of this standard is governed by the "Texas Engineering Practice Act". No warranty of any kind is made by TxDOT for any purpose whatsoever. TxDOT assumes no responsibility for the conversion of this standard to other formats or for incorrect results or damages resulting from its use.

DATE:
FILE:



TCP (S-1a)
WORK OFF SHOULDER
OR PAVED SURFACE



TCP (S-1b)
WORK ON SHOULDER

WHENEVER POSSIBLE, SURVEY PARTIES SHOULD AVOID, BY THE USE OF OFFSET LINES, ANY UNNECESSARY PERIODS OF TIME ON THE ROAD SURFACE.

8-18-08 Revision
 Corrected misspelling.

LEGEND

	Type III Barricade		Channelizing Devices		Flag
	Heavy Work Vehicle		Truck Mounted Attenuator (TMA)		
	Trailer Mounted Flashing Arrow Panel		Portable Changeable Message Sign (PCMS)		
	Flagger		Sign Post		

Posted Speed *	Formula	Minimum Desirable Taper Lengths **			Suggested Maximum Spacing of Device		Min. Sign Spacing "X" Distance	Longitudinal Buffer Space "B"
		10' Offset	11' Offset	12' Offset	On a Taper	On a Tangent		
30	$L = \frac{WS^2}{60}$	150'	165'	180'	30'	60' - 75'	120'	90'
35		205'	225'	245'	35'	70' - 90'	160'	120'
40		265'	295'	320'	40'	80' - 100'	240'	155'
45		450'	495'	540'	45'	90' - 110'	320'	195'
50		500'	550'	600'	50'	100' - 125'	400'	240'
55		550'	605'	660'	55'	110' - 140'	500'	295'
60		600'	660'	720'	60'	120' - 150'	600'	350'
65	650'	715'	780'	65'	130' - 165'	700'	410'	
70	700'	770'	840'	70'	140' - 175'	800'	475'	
75	750'	825'	900'	75'	150' - 185'	900'	540'	

* Conventional Roads Only
 ** Taper lengths have been rounded off.
 L=Length of Taper (FT.) W=Width of Offset (FT.) S=Posted Speed (MPH)

TYPICAL USAGE:

MOBILE	SHORT DURATION	SHORT TERM STATIONARY	INTERMEDIATE TERM STATIONARY	LONG TERM STATIONARY
	✓	✓		

DEFINITIONS:
 SHORT DURATION - work that occupies a location up to 1 hour.
 SHORT TERM STATIONARY - daytime work that occupies a location for more than 1 hour within a single daylight period.

- GENERAL NOTES:
- The G20-2a "END ROAD WORK" sign may be placed on the back of the CW21-6D "SURVEY CREW AHEAD" sign or may be omitted for short duration (less than 1 hour) work.
 - Channelizing devices on the shoulder taper and tangent section may be omitted for short duration (less than 1 hour) work.
 - If line-of-sight requirements for surveying operations will preclude the placement of the Work Vehicle to protect workers, the channelizing devices mentioned in Note 2 are required.
 - A Shadow Vehicle with a Truck Mounted Attenuator and flashing warning lights/arrow panel in caution mode may be used in lieu of the Work Vehicle to protect the work space.
 - The CW20-1D "ROAD WORK AHEAD" sign may be substituted for the CW21-6D "SURVEY CREW AHEAD" sign.
 - This plan may also be used for shoulder work or off shoulder work for multilane undivided roadways.
 - The CW21-6D "SURVEY CREW AHEAD" sign for low volume intersecting side roads is desirable, but is not required when working less than 15 minutes in area of the side road, as determined by the Engineer.
- TCP (S-1a)
- Cones may be placed at edge of pavement adjacent to the work space to enhance safety.

Texas Department of Transportation
Traffic Operations Division

TRAFFIC CONTROL PLAN FOR SURVEYING OPERATIONS

TCP (S-1) - 08A

© TxDOT August 2008		DN: TxDOT	CK: TxDOT	DW: TxDOT	CK: TxDOT
8-08	REVISIONS		CONT	SECT	JOB
					HIGHWAY
		DIST	COUNTY		SHEET NO.