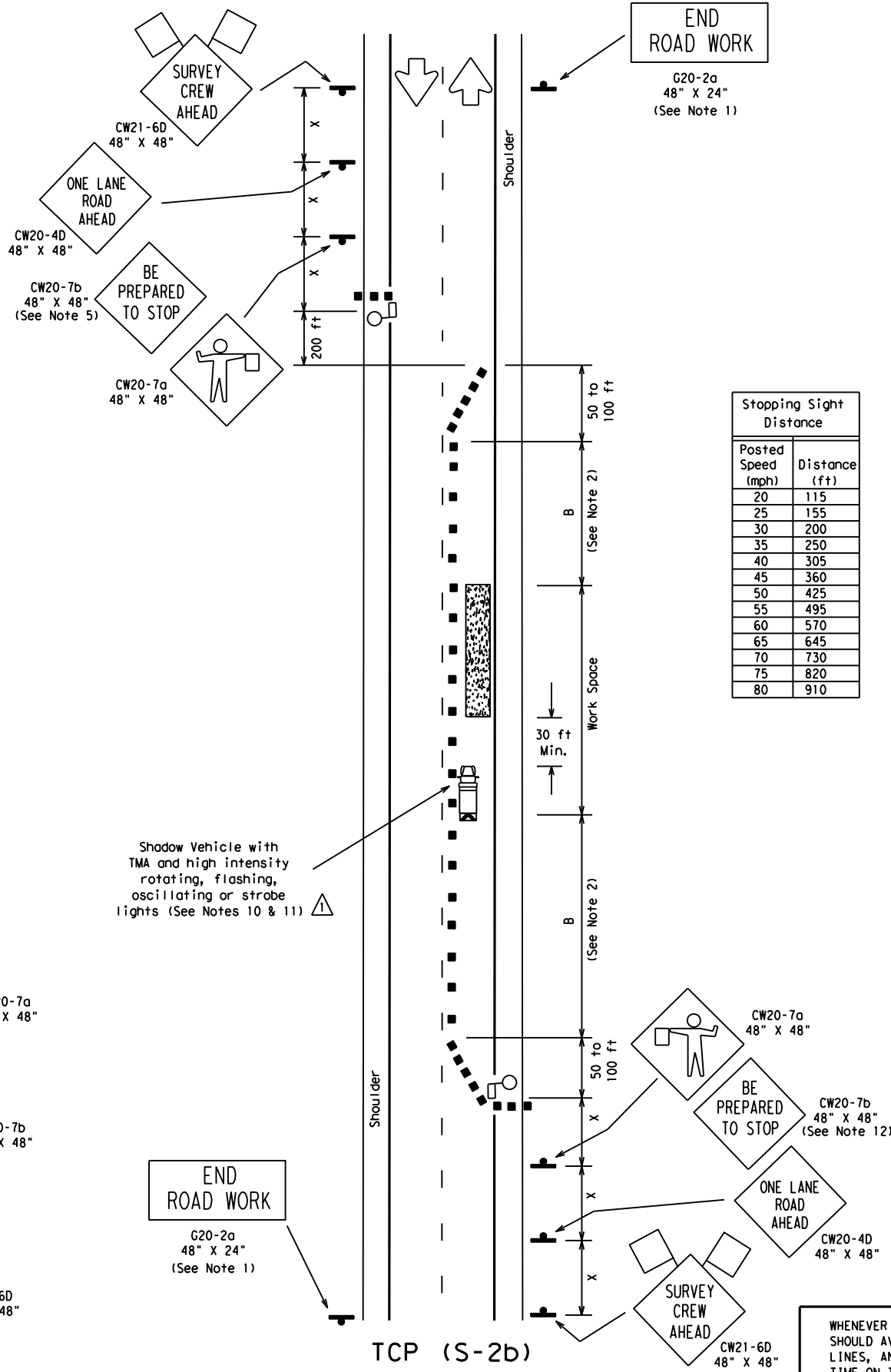
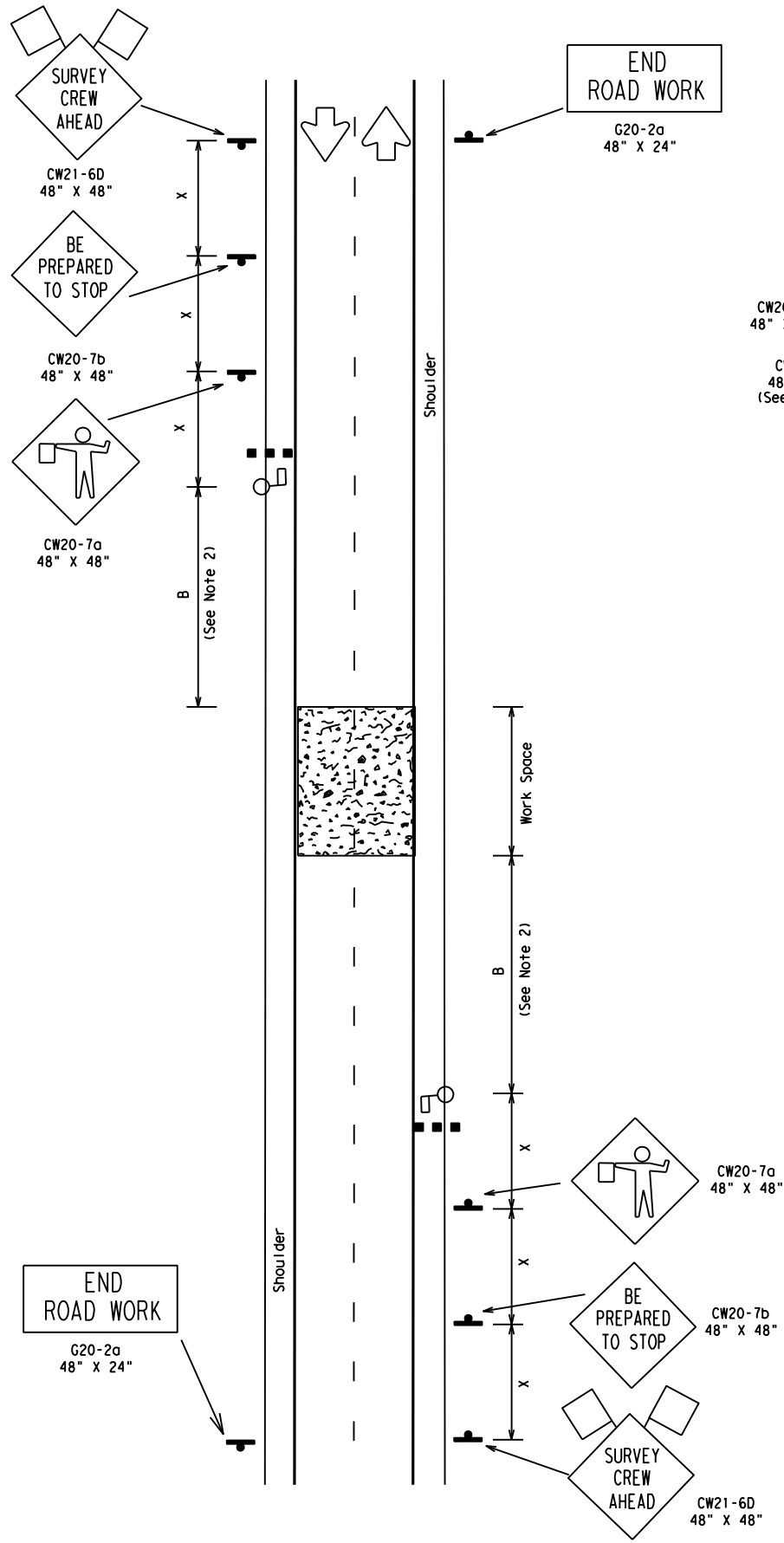


DISCLAIMER: The use of this standard is governed by the "Texas Engineering Practice Act". No warranty of any kind is made by TxDOT for any purpose whatsoever. TxDOT assumes no responsibility for the conversion of this standard to other formats or for incorrect results or damages resulting from its use.

DATE:
FILE:



Posted Speed (mph)	Distance (ft)
20	115
25	155
30	200
35	250
40	305
45	360
50	425
55	495
60	570
65	645
70	730
75	820
80	910

LEGEND

- Type III Barricade
- Channelizing Devices
- Flag
- Heavy Work Vehicle
- Truck Mounted Attenuator (TMA)
- Trailer Mounted Flashing Arrow Panel
- Portable Changeable Message Sign (PCMS)
- Flagger
- Sign Post

Posted Speed \times	Formula	Minimum Desirable Taper Lengths \times			Suggested Maximum Spacing of Device		Min. Sign Spacing "x" Distance	Longitudinal Buffer Space "B"
		10' Offset	11' Offset	12' Offset	On a Taper	On a Tangent		
30	$L = \frac{WS^2}{60}$	150'	165'	180'	30'	60'-75'	120'	90'
35		205'	225'	245'	35'	70'-90'	160'	120'
40		265'	295'	320'	40'	80'-100'	240'	155'
45	L=WS	450'	495'	540'	45'	90'-110'	320'	195'
50		500'	550'	600'	50'	100'-125'	400'	240'
55		550'	605'	660'	55'	110'-140'	500'	295'
60		600'	660'	720'	60'	120'-150'	600'	350'
65		650'	715'	780'	65'	130'-165'	700'	410'
70	700'	770'	840'	70'	140'-175'	800'	475'	
75	750'	825'	900'	75'	150'-185'	900'	540'	

* Conventional Roads Only
 ** Taper lengths have been rounded off.
 L=Length of Taper (FT.) W=Width of Offset (FT.) S=Posted Speed (MPH)

MOBILE	SHORT DURATION	SHORT TERM STATIONARY	INTERMEDIATE TERM STATIONARY	LONG TERM STATIONARY
	✓	✓		

DEFINITIONS:
 SHORT DURATION - work that occupies a location up to 1 hour.
 SHORT TERM STATIONARY - daytime work that occupies a location for more than 1 hour within a single daylight period.

- GENERAL NOTES:**
- The G20-2a "END ROAD WORK" sign may be placed on the back of the CW21-6D "SURVEY CREW AHEAD" sign or may be omitted for short duration (less than 1 hour) work.
 - Adequate Stopping Sight Distance (see Stopping Sight Distance table) should be maintained from approaching traffic to the flagger or a queue of stopped vehicles. The Buffer Space "B" should be extended around curves or other obstacles, when necessary, to have adequate Stopping Sight Distance to the flagger station.
 - Flaggers should use two-way radios or other means of communication while flagging.
 - The length of the work space should be based on the ability of the flaggers to communicate.
 - CW20-1D "ROAD WORK AHEAD" signs may be substituted for CW21-6D "SURVEY CREW AHEAD" signs.
 - The CW21-6D "SURVEY CREW AHEAD" sign for low volume intersecting side roads is desirable, but is not required when working less than 15 minutes in area of the side road, as determined by the Engineer.

- TCP (S-2a)**
- Road closures shall be less than 20 minutes. Closures less than 5 minutes are desirable.
 - Sign spacing should be increased if traffic repeatedly queues past the CW20-7b "BE PREPARED TO STOP" sign.
 - The surveying instrument should not be located on the paved surface.
- TCP (S-2b)**
- For short duration work the Shadow Vehicle with a TMA may be replaced by another Work Vehicle with high intensity rotating, flashing or strobe lights.
 - Shadow Vehicles with a TMA are desirable when workers or equipment are in the work space. When approved by the engineer, Type III barricades or other channelizing devices may be substituted for the Shadow Vehicle.
 - The CW20-7b "BE PREPARED TO STOP" sign is optional. When used, it should be installed after the CW20-4D "ONE LANE ROAD AHEAD" sign.

WHENEVER POSSIBLE, SURVEY PARTIES SHOULD AVOID, BY THE USE OF OFFSET LINES, ANY UNNECESSARY PERIODS OF TIME ON THE ROAD SURFACE.

8-18-08 Revision
 ⚠ Corrected reference to notes.

Texas Department of Transportation
 Traffic Operations Division

TRAFFIC CONTROL PLAN FOR SURVEYING OPERATIONS

TCP (S-2) -08A

© TxDOT August 2008	DN: TxDOT	CK: TxDOT	DW: TxDOT	CK: TxDOT
8-08	CONT	SECT	JOB	HIGHWAY
	DIST	COUNTY		SHEET NO.