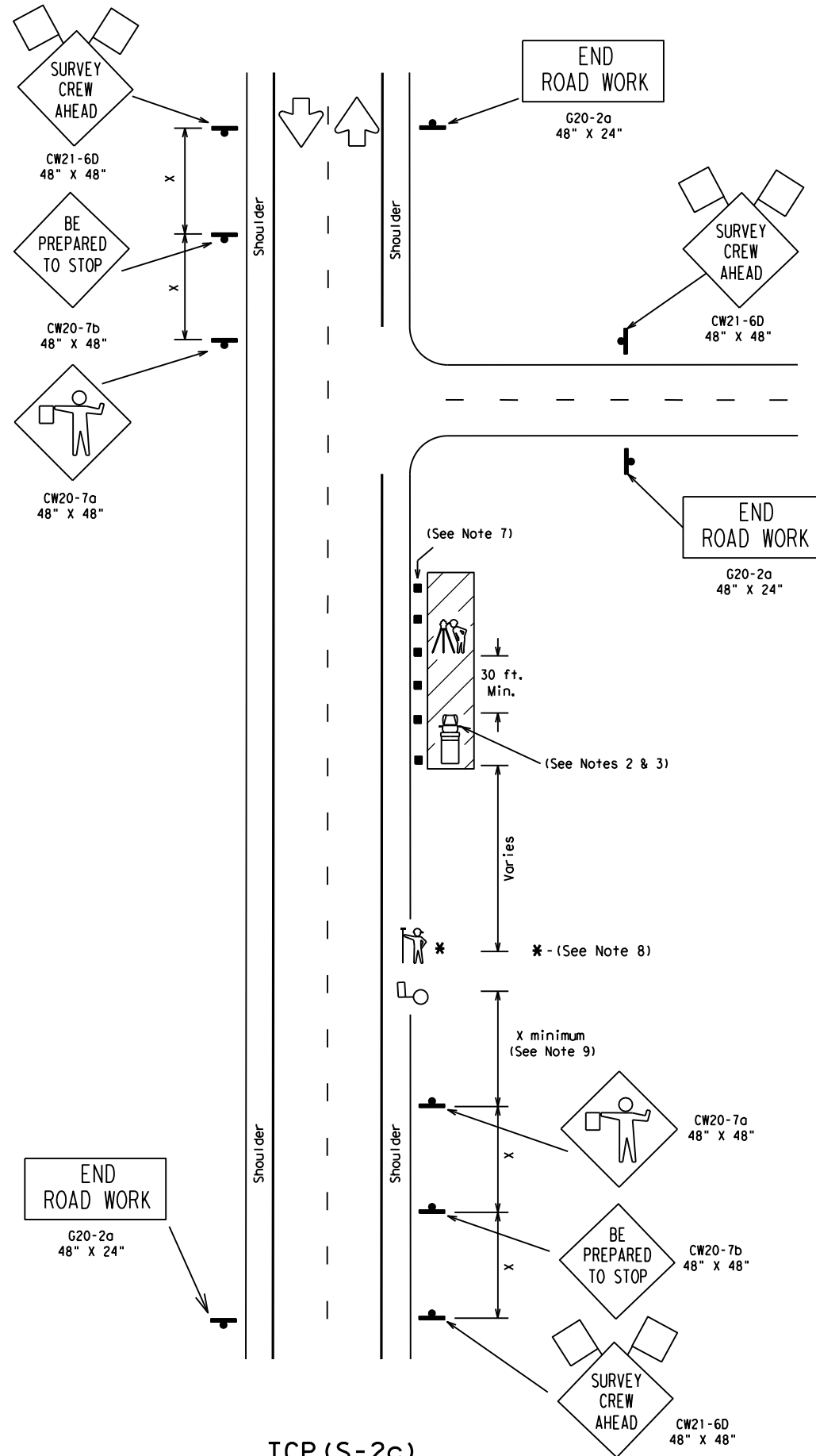


DISCLAIMER: The use of this standard is governed by the "Texas Engineering Practice Act". No warranty of any kind is made by TxDOT for any purpose whatsoever. TxDOT assumes no responsibility for the conversion of this standard to other formats or for incorrect results or damages resulting from its use.

DATE:
FILE:



TCP (S-2c)

Posted Speed (mph)	Distance (ft)
20	115
25	155
30	200
35	250
40	305
45	360
50	425
55	495
60	570
65	645
70	730
75	820
80	910

LEGEND

- Type III Barricade
- Channelizing Devices
- Flag
- Work Vehicle
- Truck Mounted Attenuator (TMA)
- Flagger
- Sign Post
- Survey Rodman
- Instrument Person

Posted Speed %	Formula	Minimum Desirable Taper Lengths **			Suggested Maximum Spacing of Device		Min. Sign Spacing "x" Distance	Longitudinal Buffer Space "B"
		10' Offset	11' Offset	12' Offset	On a Taper	On a Tangent		
30	$L = \frac{WS^2}{60}$	150'	165'	180'	30'	60' - 75'	120'	90'
35		205'	225'	245'	35'	70' - 90'	160'	120'
40		265'	295'	320'	40'	80' - 100'	240'	155'
45	L=WS	450'	495'	540'	45'	90' - 110'	320'	195'
50		500'	550'	600'	50'	100' - 125'	400'	240'
55		550'	605'	660'	55'	110' - 140'	500'	295'
60		600'	660'	720'	60'	120' - 150'	600'	350'
65		650'	715'	780'	65'	130' - 165'	700'	410'
70		700'	770'	840'	70'	140' - 175'	800'	475'
75		750'	825'	900'	75'	150' - 185'	900'	540'

* Conventional Roads Only

** Taper lengths have been rounded off.

L=Length of Taper (FT.) W=Width of Offset (FT.) S=Posted Speed (MPH)

	MOBILE	SHORT DURATION	SHORT TERM STATIONARY	INTERMEDIATE TERM STATIONARY	LONG TERM STATIONARY
		✓	✓		

DEFINITIONS:

MOBILE - work that moves continuously or intermittently (stopping up to approximately 15 minutes).

SHORT DURATION - work that occupies a location up to 1 hour.

SHORT TERM STATIONARY - daytime work that occupies a location for more than 1 hour within a single daylight period.

GENERAL NOTES:

- The G20-2a "END ROAD WORK" sign may be placed on the back of the CW21-6D "SURVEY CREW AHEAD" sign or may be omitted for short duration (less than 1 hour) work.
- Work Vehicle with high intensity rotating, flashing, oscillating or strobe lights should be used to protect work space.
- When approved by the engineer, Type III barricades or other channelizing devices may be substituted for the Heavy Work Vehicle.
- CW20-1D "ROAD WORK AHEAD" signs may be substituted for CW21-6D "SURVEY CREW AHEAD" SIGNS.
- The CW21-6D "SURVEY CREW AHEAD" sign for low volume intersecting side roads may be omitted when approved by the Engineer.
- The Surveying Instrument shall not be located on the paved surface.
- Cones at edge of pavement adjacent to instrument person may be omitted when approved by the Engineer.
- Rodman may only enter roadway when accompanied by flagger and as traffic allows.
- The distance between the advance warning signs and the work should not exceed a two mile maximum.
- Flaggers and Survey Crew should use two-way radios or other means of communication.
- Survey Crew and Flaggers shall wear high-visibility apparel meeting the ANSI 107-2007 standard performance for Class 2 or Class 3 risk exposure.
- Additional traffic control devices may be required to address local site conditions.
- Stopping Sight Distance shall be maintained from approaching traffic to the flagger. See "Stopping Sight Distance" table.

SURVEY PARTIES SHOULD AVOID ANY UNNECESSARY PERIODS OF TIME ON THE ROAD SURFACE.

This TCP is to cover two lane rural type roadways as determined by the Engineer. All other type roadways will be covered by other established Survey TCP'S.



TRAFFIC CONTROL PLAN FOR SURVEYING OPERATIONS

TCP (S-2c) - 10

© TxDOT January 2010		DN: TxDOT	CK: TxDOT	DW: TxDOT	CK: TxDOT
REVISIONS		CONT	SECT	JOB	HIGHWAY
DIST		COUNTY		SHEET NO.	