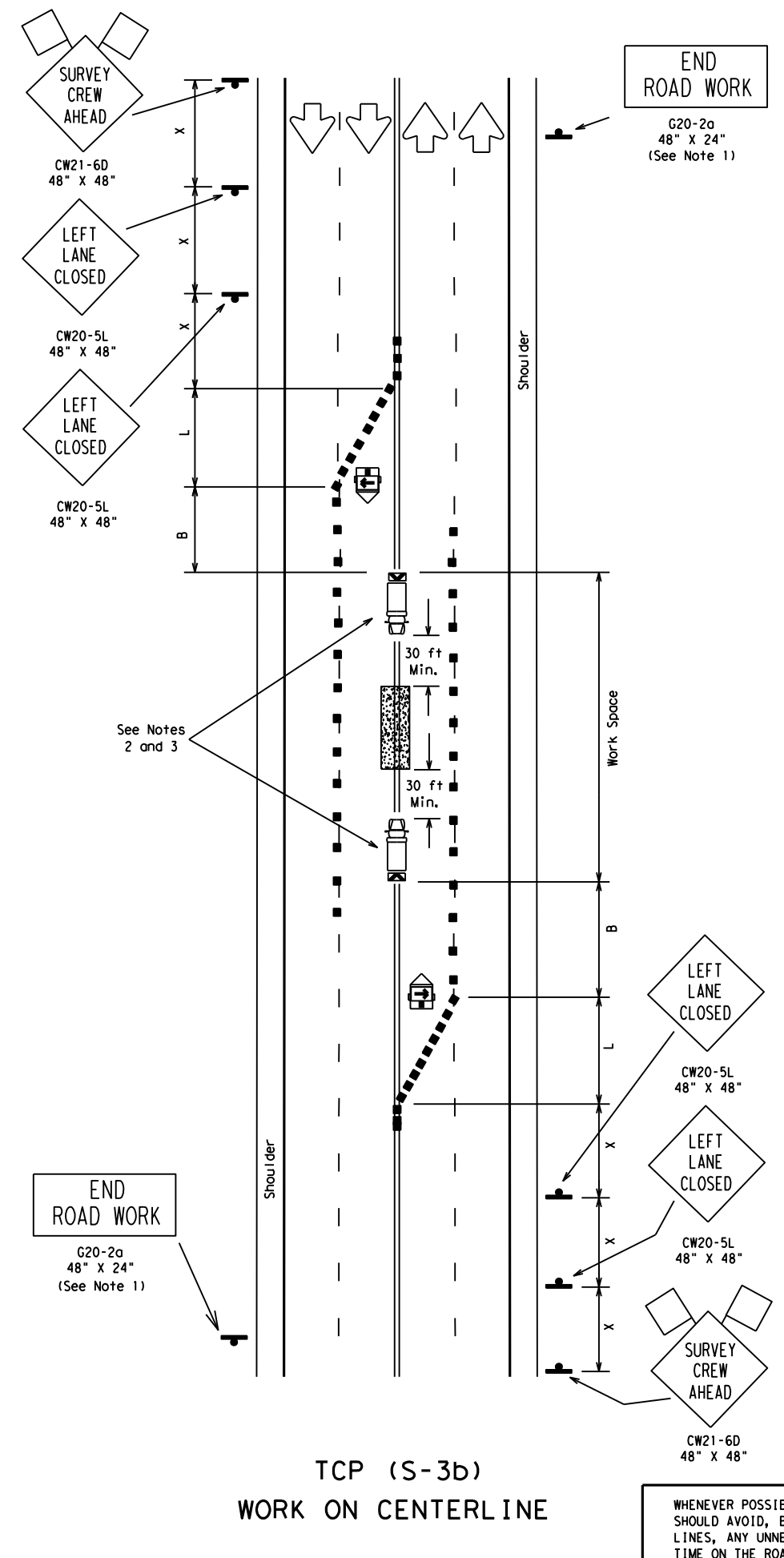
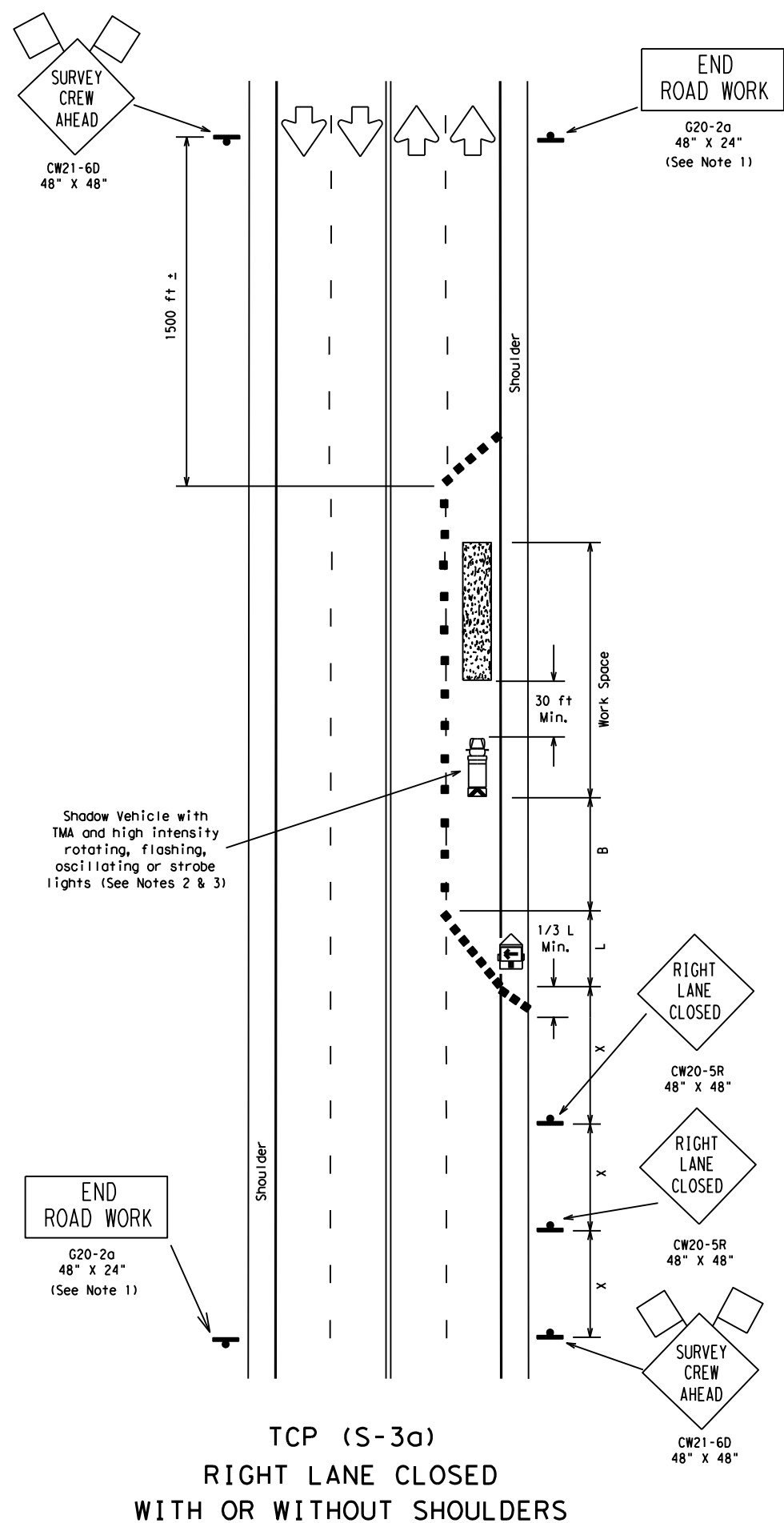


DISCLAIMER: The use of this standard is governed by the "Texas Engineering Practice Act". No warranty of any kind is made by TxDOT for any purpose whatsoever. TxDOT assumes no responsibility for the conversion of this standard to other formats or for incorrect results or damages resulting from its use.

DATE:
FILE:



WHENEVER POSSIBLE, SURVEY PARTIES SHOULD AVOID, BY THE USE OF OFFSET LINES, ANY UNNECESSARY PERIODS OF TIME ON THE ROAD SURFACE.

LEGEND

	Type III Barricade		Channelizing Devices		Flag
	Heavy Work Vehicle		Truck Mounted Attenuator (TMA)		
	Trailer Mounted Flashing Arrow Panel		Portable Changeable Message Sign (PCMS)		
	Flagger		Sign Post		

Posted Speed * 30 35 40 45 50 55 60 65 70 75	Formula $L = \frac{WS^2}{60}$	Minimum Desirable Taper Lengths **			Suggested Maximum Spacing of Device		Min. Sign Spacing "X" Distance	Longitudinal Buffer Space "B"
		10' Offset	11' Offset	12' Offset	On a Taper	On a Tangent		
30		150'	165'	180'	30'	60' - 75'	120'	90'
35		205'	225'	245'	35'	70' - 90'	160'	120'
40		265'	295'	320'	40'	80' - 100'	240'	155'
45		450'	495'	540'	45'	90' - 110'	320'	195'
50		500'	550'	600'	50'	100' - 125'	400'	240'
55		550'	605'	660'	55'	110' - 140'	500'	295'
60		600'	660'	720'	60'	120' - 150'	600'	350'
65		650'	715'	780'	65'	130' - 165'	700'	410'
70		700'	770'	840'	70'	140' - 175'	800'	475'
75		750'	825'	900'	75'	150' - 185'	900'	540'

* Conventional Roads Only
 ** Taper lengths have been rounded off.
 L=Length of Taper (FT.) W=Width of Offset (FT.) S=Posted Speed (MPH)

TYPICAL USAGE:

MOBILE	SHORT DURATION	SHORT TERM STATIONARY	INTERMEDIATE TERM STATIONARY	LONG TERM STATIONARY
	✓	✓		

DEFINITIONS:
 SHORT DURATION - work that occupies a location up to 1 hour.
 SHORT TERM STATIONARY - daytime work that occupies a location for more than 1 hour within a single daylight period.

- GENERAL NOTES:**
- The G20-2a "END ROAD WORK" sign may be placed on the back of the CW21-6D "SURVEY CREW AHEAD" sign or may be omitted for short duration (less than 1 hour) work.
 - For short duration work the Shadow Vehicle with TMA may be replaced by another Work Vehicle with high intensity rotating, flashing or strobe lights.
 - Shadow Vehicles with a TMA are desirable when workers or equipment are in the work space. When approved by the engineer, Type III barricades or other channelizing devices may be substituted for the Shadow Vehicle.
 - CW20-1D "ROAD WORK AHEAD" signs may be substituted for CW21-6D "SURVEY CREW AHEAD" signs.
 - The CW21-6D "SURVEY CREW AHEAD" sign for low volume intersecting side roads is desirable, but is not required when working less than 15 minutes in area of the side road, as determined by the Engineer.

- TCP (S-3a)**
- If shoulders are not present, the 1/3L shoulder taper is to be omitted and four channelizing devices shall be placed in front of the arrow panel, perpendicular to traffic.
- TCP (S-3b)**
- One CW20-5L "LEFT LANE CLOSED" sign in each direction may be omitted when the posted speed is less than 45mph and volume is less than 2000 ADT.

Texas Department of Transportation
 Traffic Operations Division

TRAFFIC CONTROL PLAN FOR SURVEYING OPERATIONS

TCP (S-3) -08

© TxDOT August 2008		DN: TxDOT	CK: TxDOT	DW: TxDOT	CK: TxDOT
REVISIONS		CONT	SECT	JOB	HIGHWAY
DIST		COUNTY		SHEET NO.	