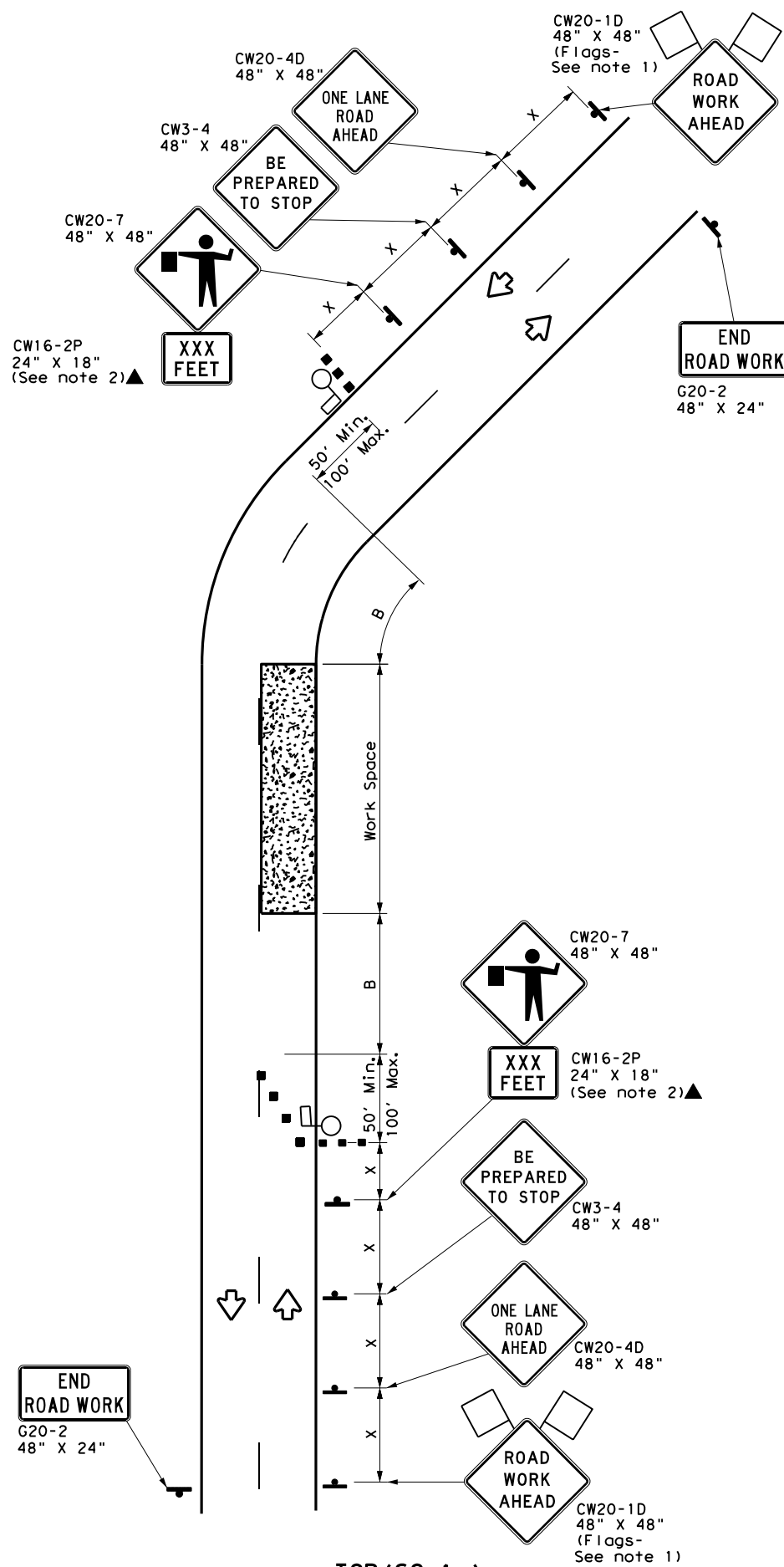
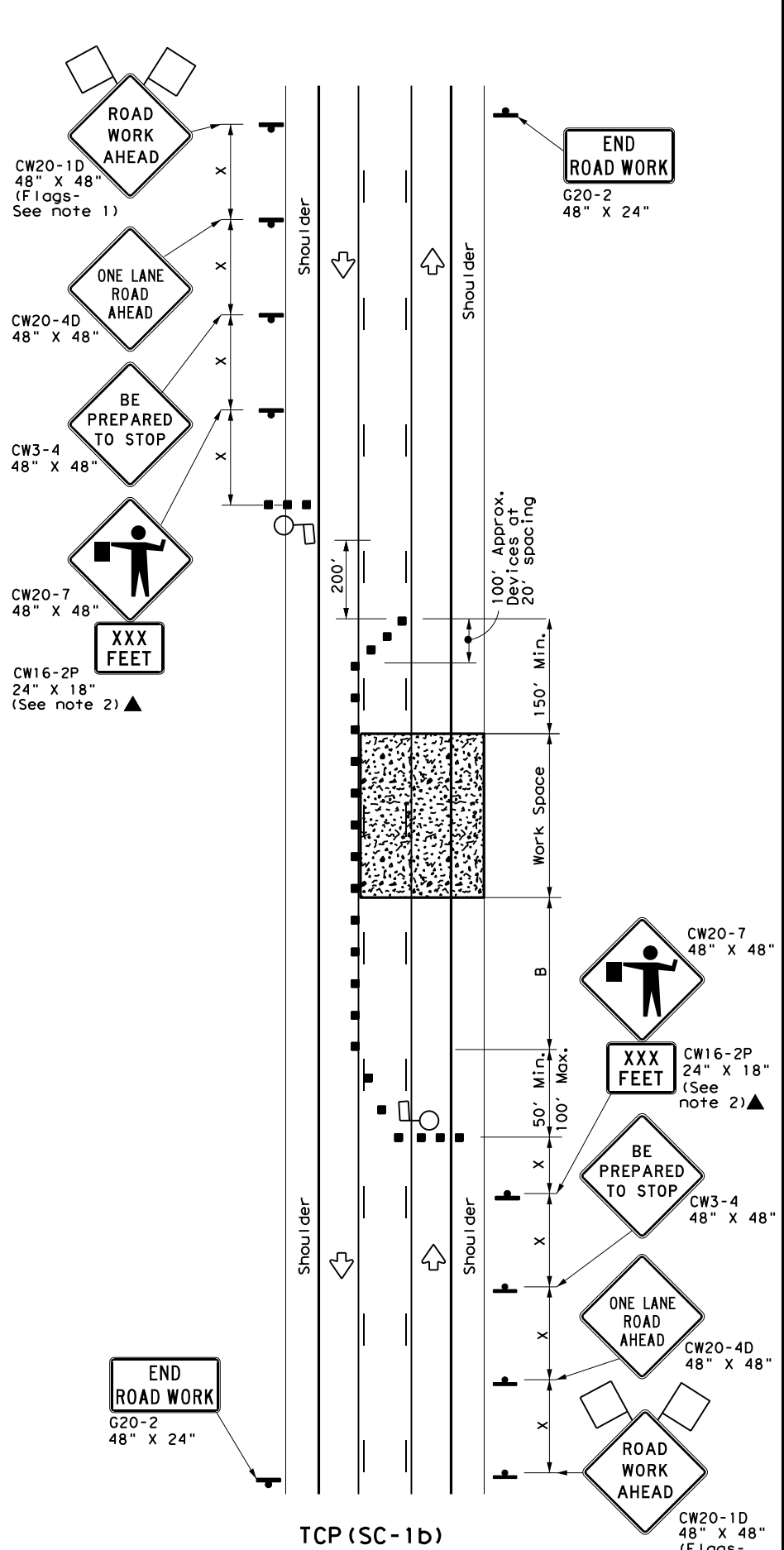


DISCLAIMER: The use of this standard is governed by the "Texas Engineering Practice Act". No warranty of any kind is made by TxDOT for any purpose whatsoever. TxDOT assumes no responsibility for the conversion of this standard to other formats or for incorrect results or damages resulting from its use.

DATE:  
FILE:



TCP (SC-1a)  
**ONE LANE TWO-WAY (2 LANES)  
CONTROL WITH PILOT VEHICLE**



TCP (SC-1b)  
**ONE LANE TWO-WAY (3 LANES)  
CONTROL WITH PILOT VEHICLE  
AND CHANNELIZING DEVICES**

LEGEND			
	Type 3 Barricade		Channelizing Devices
	Heavy Work Vehicle		Truck Mounted Attenuator (TMA)
	Trailer Mounted Flashing Arrow Board		Portable Changeable Message Sign (PCMS)
	Sign		Traffic Flow
	Flag		Flagger

Posted Speed *	Formula	Minimum Desirable Taper Lengths **			Suggested Maximum Spacing of Channelizing Devices		Minimum Sign Spacing "x" Distance	Suggested Longitudinal Buffer Space "B"	Stopping Sight Distance
		10' Offset	11' Offset	12' Offset	On a Taper	On a Tangent			
30	L = $\frac{WS^2}{60}$	150'	165'	180'	30'	60'	120'	90'	200'
35		205'	225'	245'	35'	70'	160'	120'	250'
40		265'	295'	320'	40'	80'	240'	155'	305'
45	L = WS	450'	495'	540'	45'	90'	320'	195'	360'
50		500'	550'	600'	50'	100'	400'	240'	425'
55		550'	605'	660'	55'	110'	500'	295'	495'
60		600'	660'	720'	60'	120'	600'	350'	570'
65		650'	715'	780'	65'	130'	700'	410'	645'
70		700'	770'	840'	70'	140'	800'	475'	730'
75		750'	825'	900'	75'	150'	900'	540'	820'

\* Conventional Roads Only  
\*\* Taper lengths have been rounded off.  
L=Length of Taper (FT) W=Width of Offset (FT) S=Posted Speed (MPH)

TYPICAL USAGE				
MOBILE	SHORT DURATION	SHORT TERM STATIONARY	INTERMEDIATE TERM STATIONARY	LONG TERM STATIONARY
	✓	✓		

**GENERAL NOTES**

- Flags attached to signs where shown are REQUIRED.
- All traffic control devices illustrated are REQUIRED, except those denoted with the triangle symbol may be omitted when stated elsewhere in the plans, or for routine maintenance work when approved by the Engineer.
- The CW3-4 "BE PREPARED TO STOP" sign may be installed after the CW20-4D "ONE LANE ROAD AHEAD" sign, but proper sign spacing shall be maintained.
- Sign spacing may be increased or an additional CW20-1D "ROAD WORK AHEAD" sign may be used if advance warning ahead of the flagger sign is less than 1500 feet.
- Flaggers should use two-way radios or other methods of communication at all times to control traffic.
- Flaggers should use 24" STOP/SLOW paddles to control traffic. Flags should be limited to emergency situations.
- If the work space is located near a horizontal or vertical curve, the buffer distances should be increased in order to maintain adequate stopping sight distance to the flagger and a queue of stopped vehicles (see table above).
- If the seal coat operation crosses intersections, traffic in these areas must be controlled. Care must be taken to prevent vehicles from crossing the asphalt before the aggregate is placed. This may require positioning other member of the traffic control crew at the intersection.
- Temporary rumble strips are not required on seal coat operations.
- Pilot car is used to guide vehicles through traffic control zone, vehicle shall have an identification name displayed and "PILOT CAR, FOLLOW ME" (G20-4) sign or message board mounted in a conspicuous position on rear.

**TCP (SC-1a)**

- Channelizing devices on the center-line may be omitted when a pilot car is leading traffic.

SHEET 1 OF 7

		Traffic Safety Division Standard	
<b>TRAFFIC CONTROL PLAN SEAL COAT OPERATIONS</b>			
<b>TCP (SC-1) -21</b>			
FILE: tcpsc-1-21.dgn	DN:	CK:	DW: CK:
© TxDOT April 2021	CONT	SECT	JOB HIGHWAY
REVISIONS	DIST	COUNTY	SHEET NO.