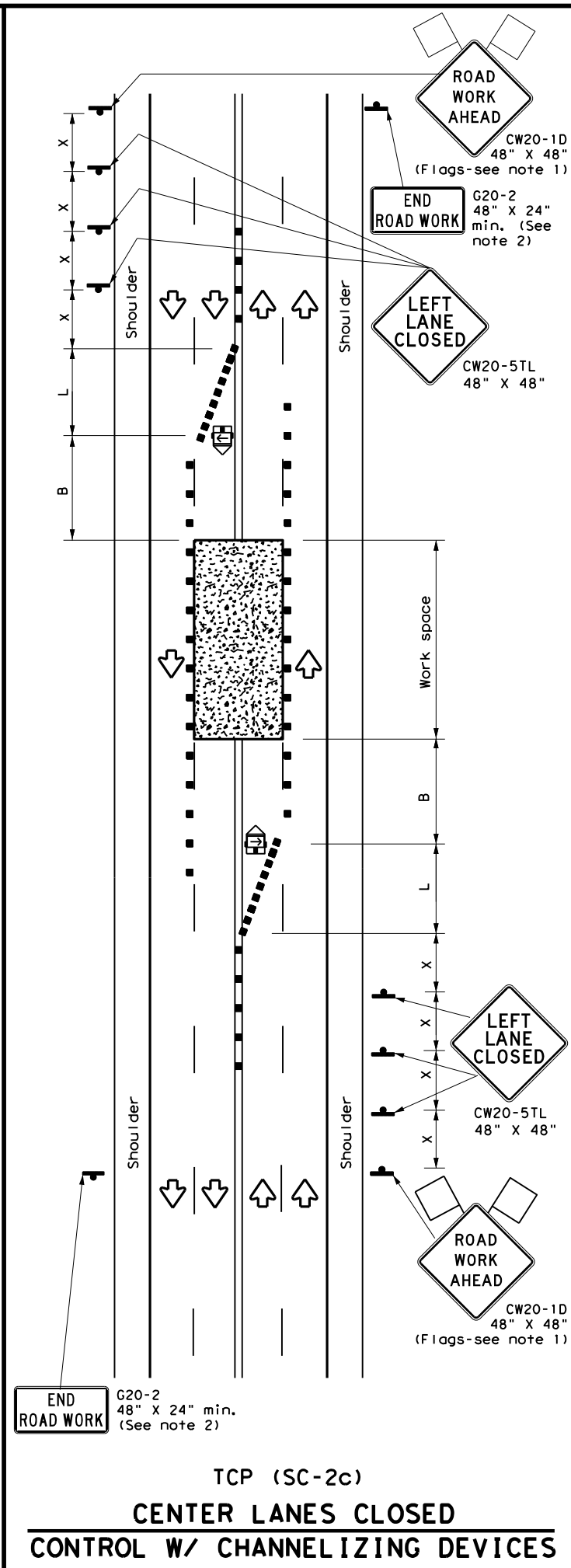
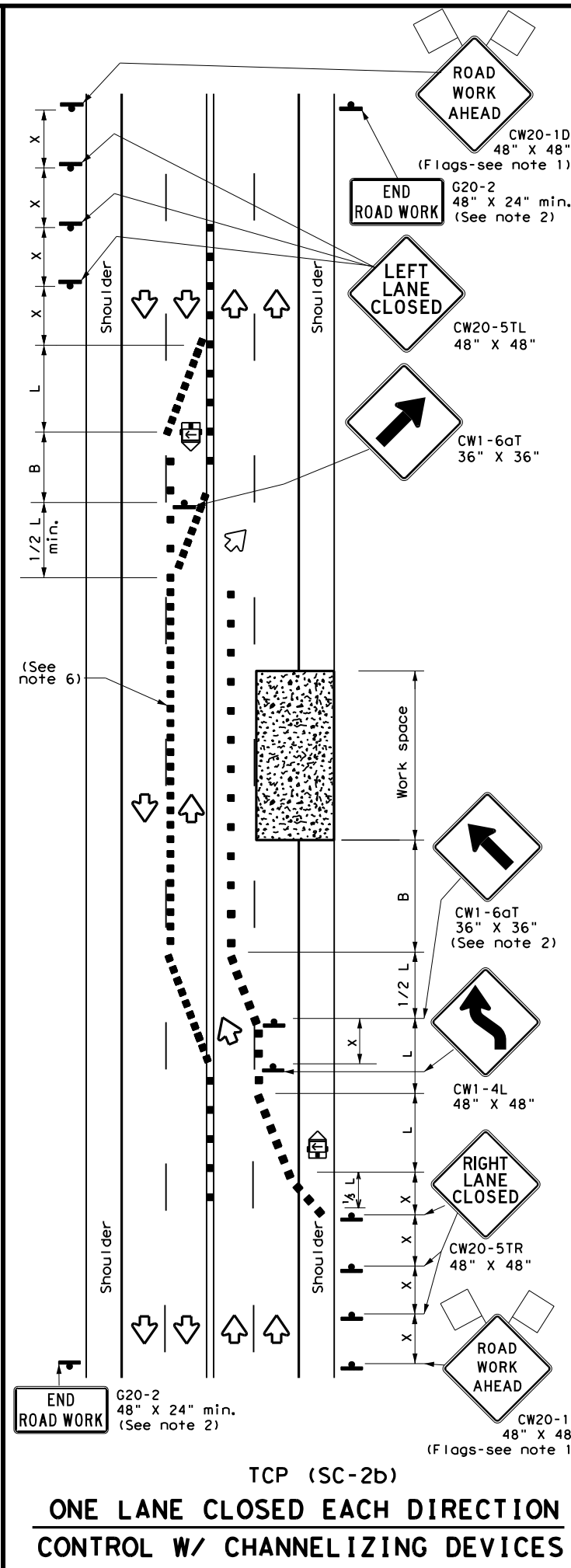
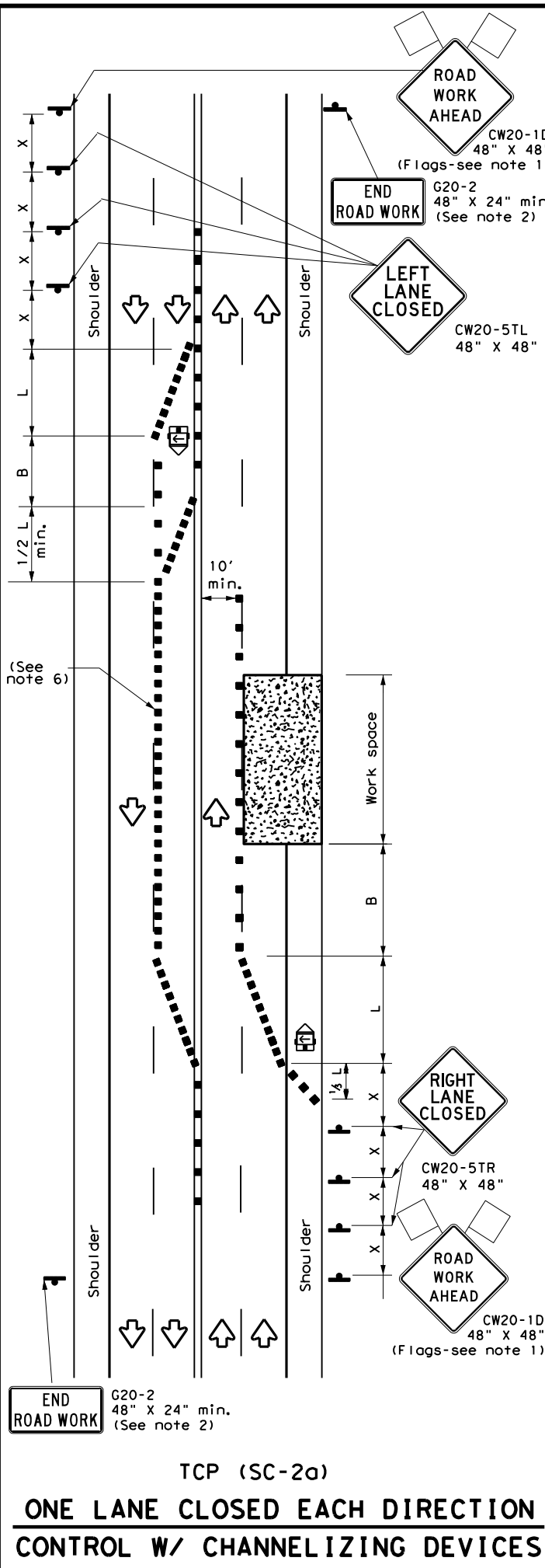


DISCLAIMER: The use of this standard is governed by the "Texas Engineering Practice Act". No warranty of any kind is made by TxDOT for any purpose whatsoever. TxDOT assumes no responsibility for the conversion of this standard to other formats or for incorrect results or damages resulting from its use.

DATE: FILE:



LEGEND			
	Type 3 Barricade		Channelizing Devices
	Heavy Work Vehicle		Truck Mounted Attenuator (TMA)
	Trailer Mounted Flashing Arrow Board		Portable Changeable Message Sign (PCMS)
	Sign		Traffic Flow
	Flag		Flagger

Posted Speed *	Formula	Minimum Desirable Taper Lengths **			Suggested Maximum Spacing of Channelizing Devices		Minimum Sign Spacing Distance "x"	Suggested Longitudinal Buffer Space "B"
		10' Offset	11' Offset	12' Offset	On a Taper	On a Tangent		
30	$L = \frac{WS^2}{60}$	150'	165'	180'	30'	60'	120'	90'
35		205'	225'	245'	35'	70'	160'	120'
40		265'	295'	320'	40'	80'	240'	155'
45	L = WS	450'	495'	540'	45'	90'	320'	195'
50		500'	550'	600'	50'	100'	400'	240'
55		550'	605'	660'	55'	110'	500'	295'
60		600'	660'	720'	60'	120'	600'	350'
65		650'	715'	780'	65'	130'	700'	410'
70		700'	770'	840'	70'	140'	800'	475'
75		750'	825'	900'	75'	150'	900'	540'

\* Conventional Roads Only  
 \*\* Taper lengths have been rounded off.  
 L = Length of Taper (FT) W = Width of Offset (FT)  
 S = Posted Speed (MPH)

TYPICAL USAGE				
MOBILE	SHORT DURATION	SHORT TERM STATIONARY	INTERMEDIATE TERM STATIONARY	LONG TERM STATIONARY
	✓	✓		

- GENERAL NOTES**
- Flags attached to signs where shown are REQUIRED.
  - All traffic control devices illustrated are REQUIRED, except: if project signing is present, END ROAD WORK (G20-2) sign is optional with approval by the Engineer.
  - The ROAD WORK AHEAD (CW20-1D) sign may be repeated if the visibility of the work zone is less than 1500 feet.
  - If the seal coat operation crosses intersections, traffic in these areas must be controlled. Care must be taken to prevent vehicles from crossing the asphalt before the aggregate is placed. This may require positioning additional traffic control personnel (flaggers) at the intersection.
  - Temporary rumble strips are not required on seal coat operations.
- TCP (SC-2a) and (SC-2b)**
- Channelizing devices which separate two-way traffic shall be spaced on tapers at:
    - 20 feet;
    - 15 feet when posted speeds are 35 mph or slower; or
    - at 1/2(S) for tangent sections.
 This tighter device spacing is intended for the areas of conflicting markings, not the entire work zone.

SHEET 2 OF 8

Texas Department of Transportation  
 Traffic Safety Division Standard

**TRAFFIC CONTROL PLAN**  
**SEALCOAT OPERATIONS**  
**MULTILANE ROADS**  
**(UNDIVIDED)**  
**TCP (SC-2) -22**

FILE: tcpsc-2-22.dgn	DN:	CK:	DW:	CK:
© TxDOT October 2022	CONT	SECT	JOB	HIGHWAY
REVISIONS				
4-21				
10-22				
	DIST	COUNTY		SHEET NO.