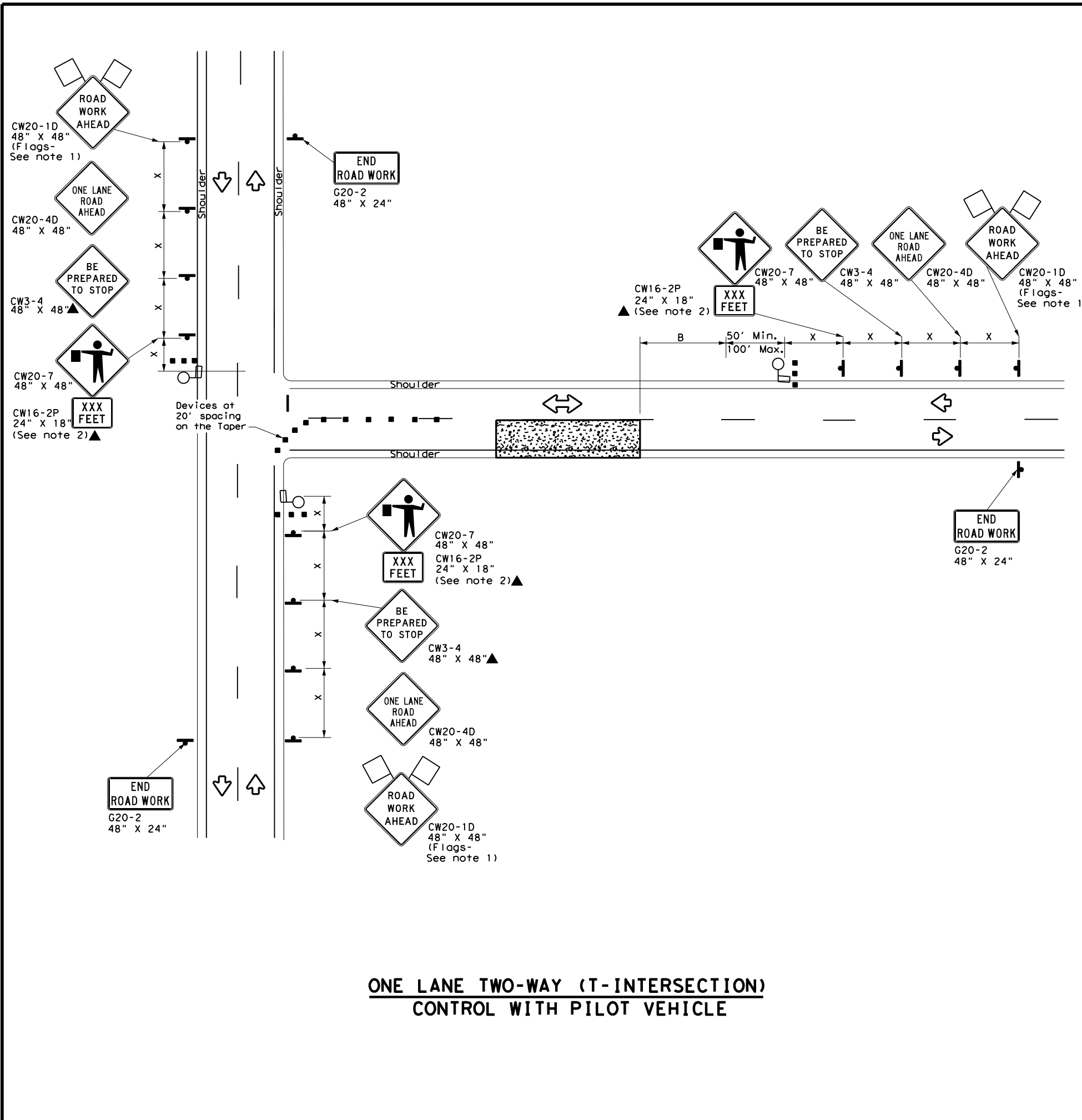


DISCLAIMER: The use of this standard is governed by the "Texas Engineering Practice Act". No warranty of any kind is made by TxDOT for any purpose whatsoever. TxDOT assumes no responsibility for the conversion of this standard to other formats or for incorrect results or damages resulting from its use.

DATE:
FILE:



**ONE LANE TWO-WAY (T-INTERSECTION)
CONTROL WITH PILOT VEHICLE**

| LEGEND | | | |
|--------|--------------------------------------|--|---|
| | Type 3 Barricade | | Channelizing Devices |
| | Heavy Work Vehicle | | Truck Mounted Attenuator (TMA) |
| | Trailer Mounted Flashing Arrow Board | | Portable Changeable Message Sign (PCMS) |
| | Sign | | Traffic Flow |
| | Flag | | Flagger |

| Posted Speed * | Formula | Minimum Desirable Taper Lengths ** | | | Suggested Maximum Spacing of Channelizing Devices | | Minimum Sign Spacing "X" Distance | Suggested Longitudinal Buffer Space "B" | Stopping Sight Distance |
|-------------------|-----------------------|---------------------------------------|---------------|---------------|---|--------------|---|--|-------------------------|
| | | 10' Offset | 11' Offset | 12' Offset | On a Taper | On a Tangent | | | |
| 30 | $L = \frac{WS^2}{60}$ | 150' | 165' | 180' | 30' | 60' | 120' | 90' | 200' |
| 35 | | 205' | 225' | 245' | 35' | 70' | 160' | 120' | 250' |
| 40 | | 265' | 295' | 320' | 40' | 80' | 240' | 155' | 305' |
| 45 | L = WS | 450' | 495' | 540' | 45' | 90' | 320' | 195' | 360' |
| 50 | | 500' | 550' | 600' | 50' | 100' | 400' | 240' | 425' |
| 55 | | 550' | 605' | 660' | 55' | 110' | 500' | 295' | 495' |
| 60 | | 600' | 660' | 720' | 60' | 120' | 600' | 350' | 570' |
| 65 | | 650' | 715' | 780' | 65' | 130' | 700' | 410' | 645' |
| 70 | | 700' | 770' | 840' | 70' | 140' | 800' | 475' | 730' |
| 75 | | 750' | 825' | 900' | 75' | 150' | 900' | 540' | 820' |

* Conventional Roads Only
** Taper lengths have been rounded off.
L=Length of Taper (FT) W=Width of Offset (FT) S=Posted Speed (MPH)

| TYPICAL USAGE | | | | |
|---------------|----------------|-----------------------|------------------------------|----------------------|
| MOBILE | SHORT DURATION | SHORT TERM STATIONARY | INTERMEDIATE TERM STATIONARY | LONG TERM STATIONARY |
| | ✓ | ✓ | | |

GENERAL NOTES

- Flags attached to signs where shown are REQUIRED.
- All traffic control devices illustrated are REQUIRED, except those denoted with the triangle symbol may be omitted when stated elsewhere in the plans, or for routine maintenance work when approved by the Engineer.
- The CW3-4 "BE PREPARED TO STOP" sign may be installed after the CW20-4D "ONE LANE ROAD AHEAD" sign, but proper sign spacing shall be maintained.
- Flaggers should use two-way radios or other methods of communication at all times to control traffic.
- Flaggers should use 24" STOP/SLOW paddles to control traffic. Flags should be limited to emergency situations.
- If the work space is located near a horizontal or vertical curve, the buffer distances should be increased in order to maintain adequate stopping sight distance to the flagger and a queue of stopped vehicles (see table above).
- Temporary rumble strips are not required on seal coat operations.
- Pilot car is used to guide vehicles through traffic control zone, vehicle shall have an identification name displayed and "PILOT CAR, FOLLOW ME" (G20-4) sign or message board mounted in a conspicuous position on rear.

SHEET 4 OF 7

| | | | |
|--|------------|----------------------------------|---------|
| | | Traffic Safety Division Standard | |
| TRAFFIC CONTROL PLAN SEAL COAT OPERATIONS | | | |
| TCP (SC-4) - 21 | | | |
| FILE: tcpsc-4-21.dgn | DN: | CK: | DW: |
| © TxDOT | April 2021 | CON: | SECT: |
| REVISIONS | | JOB | HIGHWAY |
| | | DIST | COUNTY |
| | | SHEET NO. | |