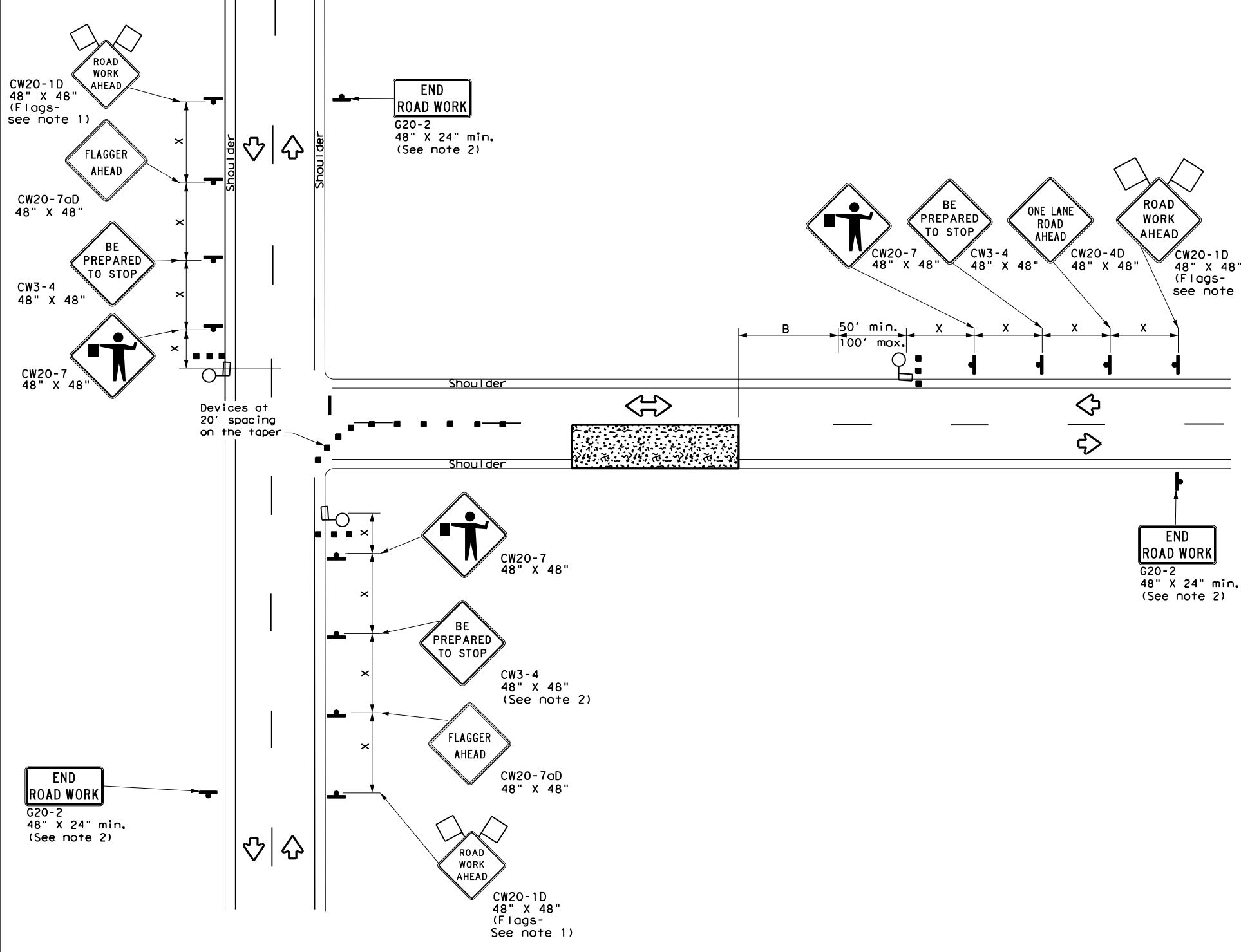


DISCLAIMER: The use of this standard is governed by the "Texas Engineering Practice Act". No warranty of any kind is made by TxDOT for any purpose whatsoever. TxDOT assumes no responsibility for the conversion of this standard to other formats or for incorrect results or damages resulting from its use.

DATE:
FILE:



**ONE LANE TWO-WAY (T-INTERSECTION)
CONTROL WITH PILOT VEHICLE**

LEGEND			
	Type 3 Barricade		Channelizing Devices
	Heavy Work Vehicle		Truck Mounted Attenuator (TMA)
	Trailer Mounted Flashing Arrow Board		Portable Changeable Message Sign (PCMS)
	Sign		Traffic Flow
	Flag		Flagger

Posted Speed *	Formula	Minimum Desirable Taper Lengths **			Suggested Maximum Spacing of Channelizing Devices		Minimum Sign Spacing Distance "X"	Suggested Longitudinal Buffer Space "B"	Stopping Sight Distance
		10' Offset	11' Offset	12' Offset	On a Taper	On a Tangent			
30	$L = \frac{WS^2}{60}$	150'	165'	180'	30'	60'	120'	90'	200'
35		205'	225'	245'	35'	70'	160'	120'	250'
40		265'	295'	320'	40'	80'	240'	155'	305'
45	L = WS	450'	495'	540'	45'	90'	320'	195'	360'
50		500'	550'	600'	50'	100'	400'	240'	425'
55		550'	605'	660'	55'	110'	500'	295'	495'
60		600'	660'	720'	60'	120'	600'	350'	570'
65		650'	715'	780'	65'	130'	700'	410'	645'
70		700'	770'	840'	70'	140'	800'	475'	730'
75		750'	825'	900'	75'	150'	900'	540'	820'

* Conventional Roads Only
 ** Taper lengths have been rounded off.
 L = Length of Taper (FT) W = Width of Offset (FT) S = Posted Speed (MPH)

TYPICAL USAGE				
MOBILE	SHORT DURATION	SHORT TERM STATIONARY	INTERMEDIATE TERM STATIONARY	LONG TERM STATIONARY
	✓	✓		

GENERAL NOTES

- Flags attached to signs where shown are REQUIRED.
- All traffic control devices illustrated are REQUIRED, except: if project signing is present, END ROAD WORK (G20-2) sign is optional with approval by the Engineer.
- Flaggers should use two-way radios or other methods of communication at all times for traffic control coordination.
- Flaggers should use 24" STOP (CW20-8) / SLOW (CW20-8aT) paddles to control traffic. Flags should be limited to emergency situations.
- If the work space is located near a horizontal or vertical curve, the buffer distances should be increased in order to maintain adequate stopping sight distance to the flagger and a queue of stopped vehicles (see table above).
- Temporary rumble strips are not required on seal coat operations.
- The pilot car is used to guide vehicles through traffic control zone. The pilot car shall have an identification name displayed and PILOT CAR, FOLLOW ME (G20-4) sign or message board mounted in a conspicuous position on rear.

SHEET 4 OF 8



**TRAFFIC CONTROL PLAN
SEAL COAT OPERATIONS
NEAR INTERSECTION**

TCP (SC-4) - 22

FILE: tcpsc-4-22.dgn	DN:	CK:	DW:	CK:
© TxDOT October 2022	CONT	SECT	JOB	HIGHWAY
REVISIONS				
4-21				
10-22	DIST	COUNTY	SHEET NO.	