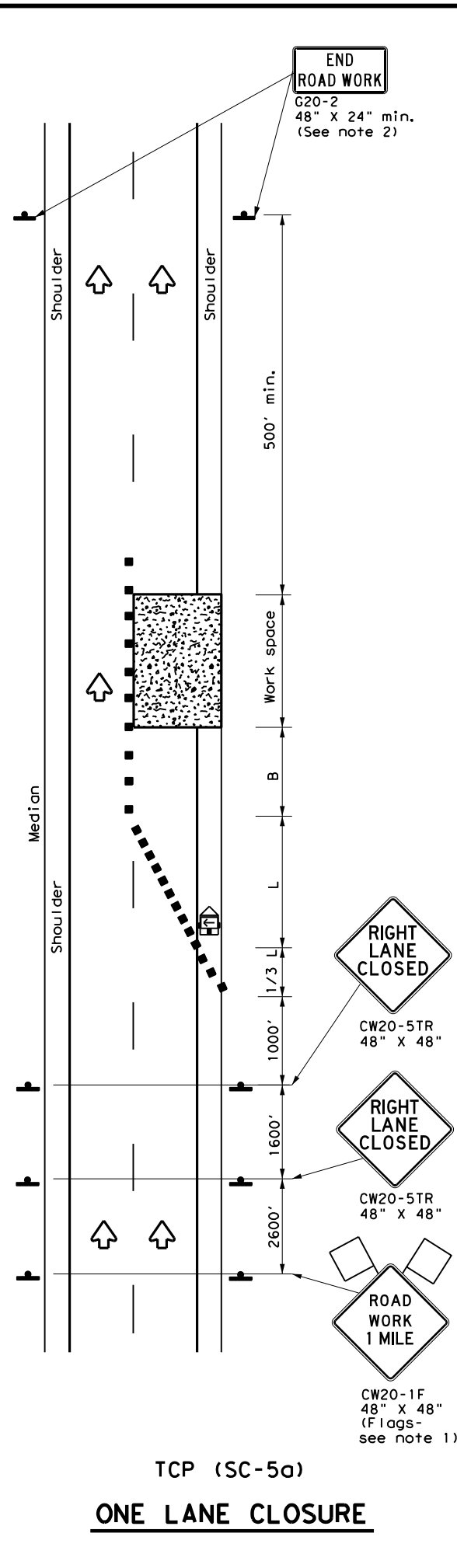
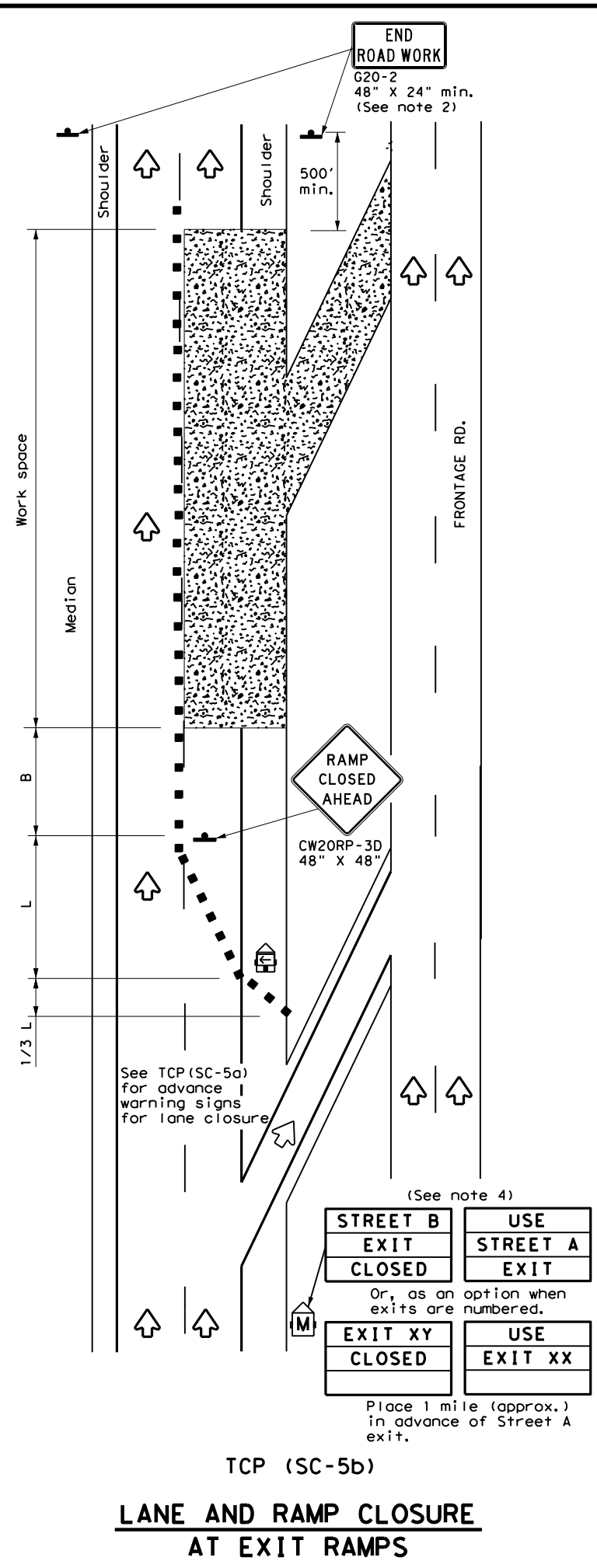


DISCLAIMER: The use of this standard is governed by the "Texas Engineering Practice Act". No warranty of any kind is made by TxDOT for any purpose whatsoever. TxDOT assumes no responsibility for the conversion of this standard to other formats or for incorrect results or damages resulting from its use.

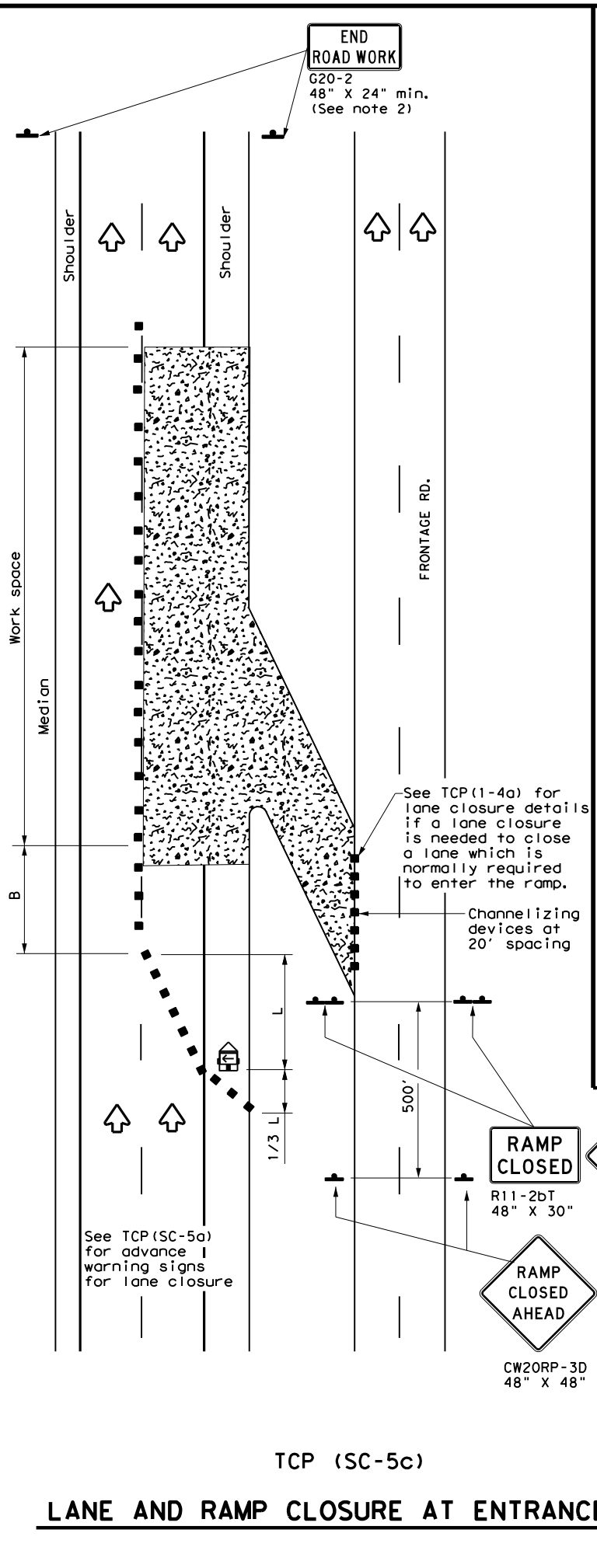
DATE:
FILE:



TCP (SC-5a)
ONE LANE CLOSURE



TCP (SC-5b)
LANE AND RAMP CLOSURE AT EXIT RAMP



TCP (SC-5c)
LANE AND RAMP CLOSURE AT ENTRANCE RAMP

LEGEND			
	Type 3 Barricade		Channelizing Devices
	Heavy Work Vehicle		Truck Mounted Attenuator (TMA)
	Trailer Mounted Flashing Arrow Board		Portable Changeable Message Sign (PCMS)
	Sign		Traffic Flow
	Flag		Flagger

Posted Speed *	Formula	Minimum Desirable Taper Lengths **			Suggested Maximum Spacing of Channelizing Devices		Minimum Sign Spacing Distance "x"	Suggested Longitudinal Buffer Space "B"
		10' Offset	11' Offset	12' Offset	On a Taper	On a Tangent		
30	$L = \frac{WS^2}{60}$	150'	165'	180'	30'	60'	120'	90'
35		205'	225'	245'	35'	70'	160'	120'
40		265'	295'	320'	40'	80'	240'	155'
45	L = WS	450'	495'	540'	45'	90'	320'	195'
50		500'	550'	600'	50'	100'	400'	240'
55		550'	605'	660'	55'	110'	500'	295'
60		600'	660'	720'	60'	120'	600'	350'
65		650'	715'	780'	65'	130'	700'	410'
70		700'	770'	840'	70'	140'	800'	475'
75		750'	825'	900'	75'	150'	900'	540'

* Conventional Roads Only
 ** Taper lengths have been rounded off.
 L = Length of Taper (FT) W = Width of Offset (FT)
 S = Posted Speed (MPH)

TYPICAL USAGE				
MOBILE	SHORT DURATION	SHORT TERM STATIONARY	INTERMEDIATE TERM STATIONARY	LONG TERM STATIONARY
		✓		

- GENERAL NOTES**
- Flags attached to signs where shown, are REQUIRED.
 - All traffic control devices illustrated are REQUIRED, except:
 - If project signing is present, END ROAD WORK (G20-2) sign is optional with approval by the Engineer.
 - USE NEXT RAMP (CW25-1T) sign is optional with approval by the Engineer.
 - Channelizing devices used to close lanes may be supplemented with the Chevron Alignment Sign placed on every other channelizing device. Chevrons may be attached to plastic drums as per BC Standards.
 - The PCMS may be omitted if: it is replaced with a RAMP CLOSED AHEAD (CW20RP-3D) sign or when a permanent Dynamic Message Sign (DMS) is available in the appropriate location to display a similar message as called for on the PCMS.
 - Temporary rumble strips are not required on seal coat operations.

SHEET 5 OF 8

Texas Department of Transportation
Traffic Safety Division Standard

**TRAFFIC CONTROL PLAN
SEAL COAT OPERATIONS
DIVIDED HIGHWAYS**

TCP (SC-5) -22

FILE: tcpsc-5-22.dgn	DN:	CK:	DW:	CK:
© TxDOT October 2022	CON:	SECT:	JOB:	HIGHWAY:
4-21 10-22	REVISIONS		DIST:	COUNTY:
				SHEET NO.: