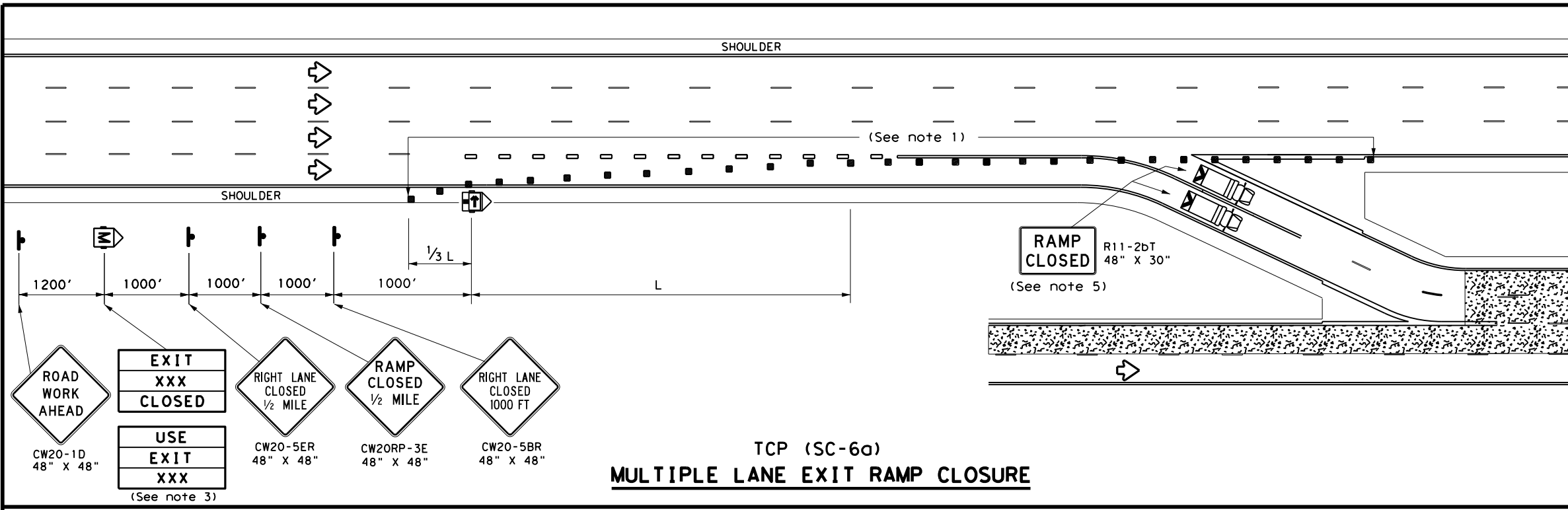
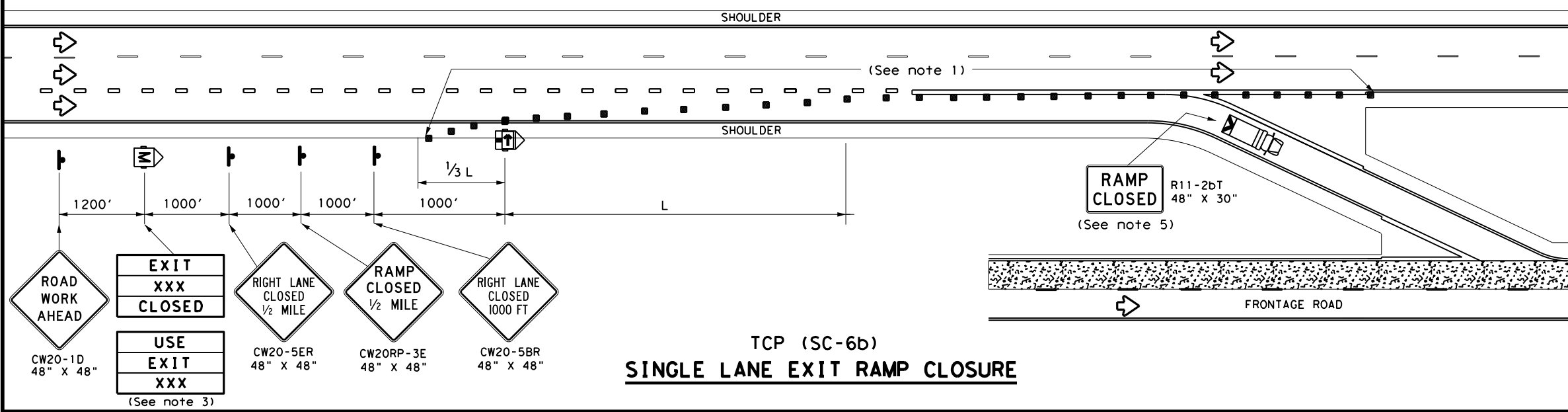


DISCLAIMER: The use of this standard is governed by the "Texas Engineering Practice Act". No warranty of any kind is made by TxDOT for any purpose whatsoever. TxDOT assumes no responsibility for the conversion of this standard to other formats or for incorrect results or damages resulting from its use.

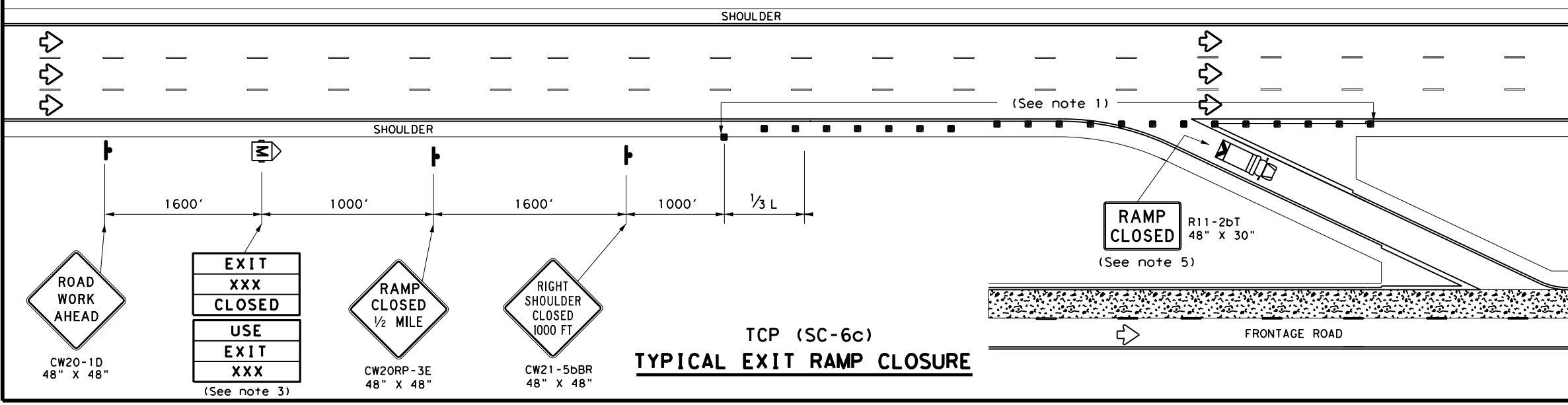
DATE: FILE:



TCP (SC-6a)
MULTIPLE LANE EXIT RAMP CLOSURE



TCP (SC-6b)
SINGLE LANE EXIT RAMP CLOSURE



TCP (SC-6c)
TYPICAL EXIT RAMP CLOSURE

LEGEND			
	Type 3 Barricade		Channelizing Devices (CDs)
	Heavy Work Vehicle		Truck Mounted Attenuator (TMA)
	Trailer Mounted Flashing Arrow Board		Portable Changeable Message Sign (PCMS)
	Sign		Traffic Flow
	Flag		Flagger

Posted Speed	Formula	Minimum Desirable Taper Lengths "L" **			Suggested Maximum Spacing of Channelizing Devices		Suggested Longitudinal Buffer Space "B"
		10' Offset	11' Offset	12' Offset	On a Taper	On a Tangent	
45	L = WS	450'	495'	540'	45'	90'	195'
50		500'	550'	600'	50'	100'	240'
55		550'	605'	660'	55'	110'	295'
60		600'	660'	720'	60'	120'	350'
65		650'	715'	780'	65'	130'	410'
70		700'	770'	840'	70'	140'	475'
75		750'	825'	900'	75'	150'	540'
80		800'	880'	960'	80'	160'	615'
85		850'	935'	1020'	85'	170'	695'

** Taper lengths have been rounded off.
L = Length of Taper (FT) W = Width of Offset (FT)
S = Posted Speed (MPH)

TYPICAL USAGE				
MOBILE	SHORT DURATION	SHORT TERM STATIONARY	INTERMEDIATE TERM STATIONARY	LONG TERM STATIONARY
	✓	✓		

- GENERAL NOTES**
- Place channelizing devices at 20' spacings. Tighter spacing allowed as necessary to address field conditions or observed driver behavior.
 - See the Standard Highway Sign Design for Texas (SHSD) for sign details.
 - The PCMS may be omitted if replaced with a RAMP CLOSED AHEAD (CW20RP-3D) sign or when a permanent Dynamic Message Sign (DMS) is available in an appropriate location to display a similar message as called for on the PCMS.
 - When it is determined that a through lane should be closed in addition to the exit ramp, refer to TCP(6-4) for traffic control details.
 - A Truck Mounted Attenuator (TMA), where shown, is REQUIRED and shall have a RAMP CLOSED (R11-2bT) sign mounted on the rear of the truck.

**TRAFFIC CONTROL PLAN
SEAL COAT OPERATIONS
DIVIDED HIGHWAYS**

TCP (SC-6) - 22

FILE: fcpSC-6-22.dgn	DN: TxDOT	CK: TxDOT	DW: TxDOT	CK: TxDOT
© TxDOT October 2022	CONT	SECT	JOB	HIGHWAY
10-22	REVISIONS		DIST	COUNTY
				SHEET NO.