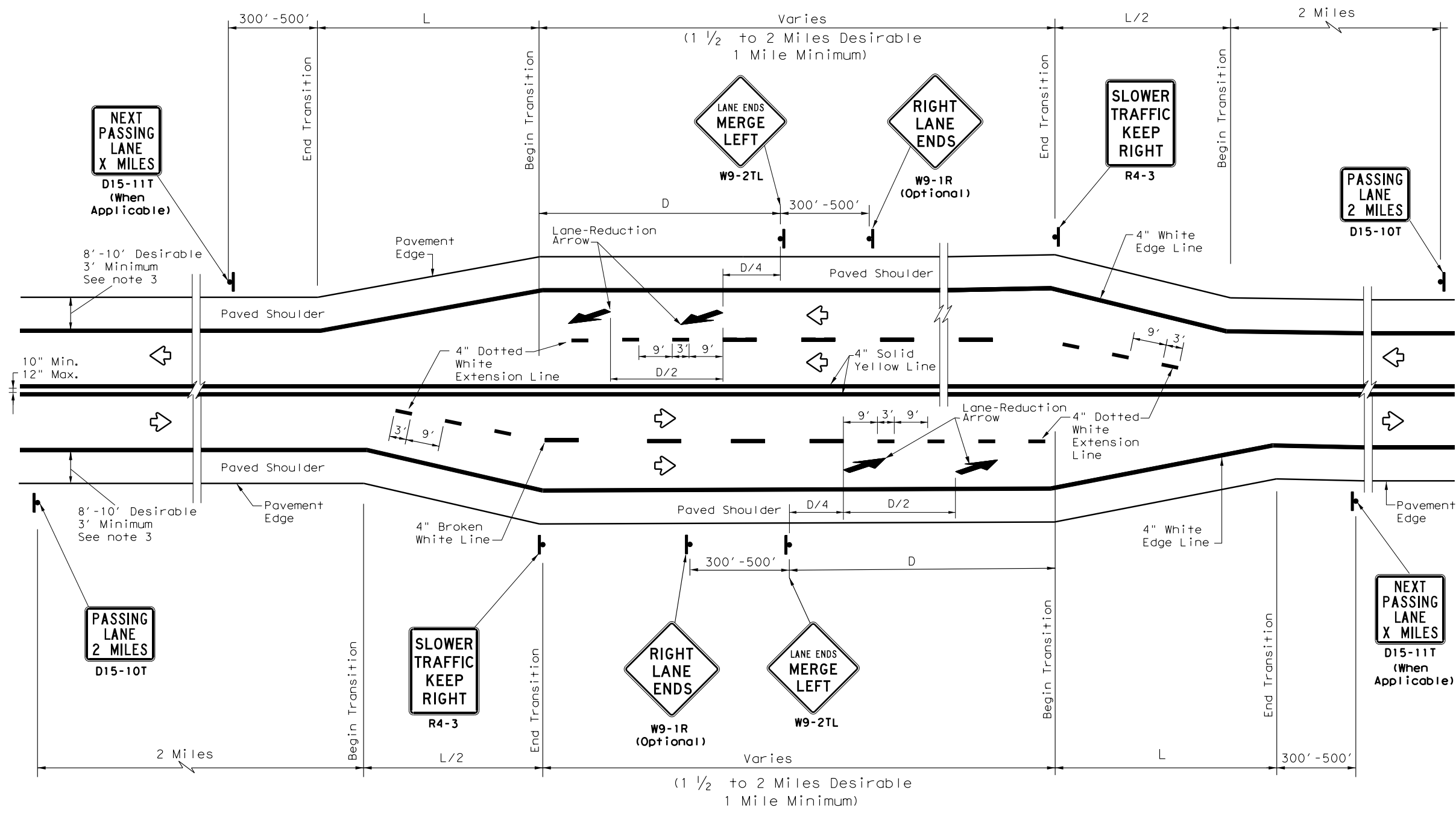


DISCLAIMER: The use of this standard is governed by the "Texas Engineering Practice Act". No warranty of any kind is made by TxDOT for any purpose whatsoever. TxDOT assumes no responsibility for the conversion of this standard to other formats or for incorrect results or damages resulting from its use.

DATE:  
FILE:



**SIDE BY SIDE PASSING LANES**

LEGEND	
	Sign
	Traffic Flow

TYPICAL TAPER LENGTH (L)	
Formula *	$L = WS$

\* Transition length should be rounded up to nearest 5 foot increment.

L=Length of Transition (FT)  
W=Width of Offset (FT)  
S=Posted Speed (MPH)

**EXAMPLE**  
A 12 foot lane is added on a 70 mph roadway. The length of the transition should be:  
 $L=12 \times 70=840$  ft

Posted Speed	D (FT)
40	670
45	775
50	885
55	990
60	1100
65	1200
70	1250
75	1350

- GENERAL NOTES**
- For minimum and desirable design details, see the Roadway Design Manual, Chapter 4, Section 6, Super 2 Highways.
  - For Raised Pavement Markers(RPM) details, see Pavement Markings Standard sheet, PM(2). Note that RPMs are not recommended on the 4" dotted white extension lines.
  - For rumble strip options available for the designed shoulder width, see rumble strip standard sheet RS(4).



**TEXAS SUPER 2  
PASSING LANES**

**TS2 (PL-2) - 18**

FILE: ts2-2-18.dgn	DN:	CK:	DW:	CK:
© TxDOT May 2010	CONT	SECT	JOB	HIGHWAY
REVISIONS				
2-12				
3-12				
3-18				
	DIST	COUNTY	SHEET NO.	