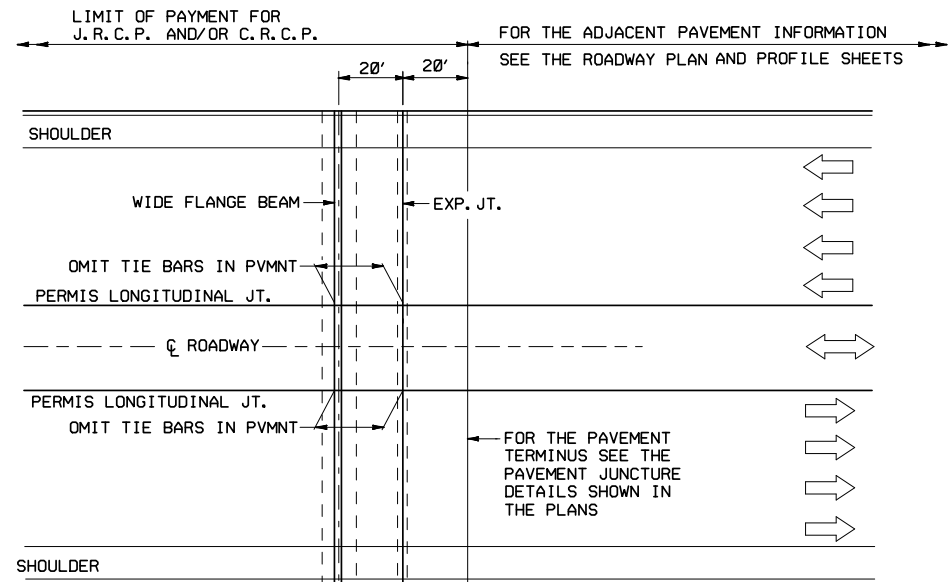


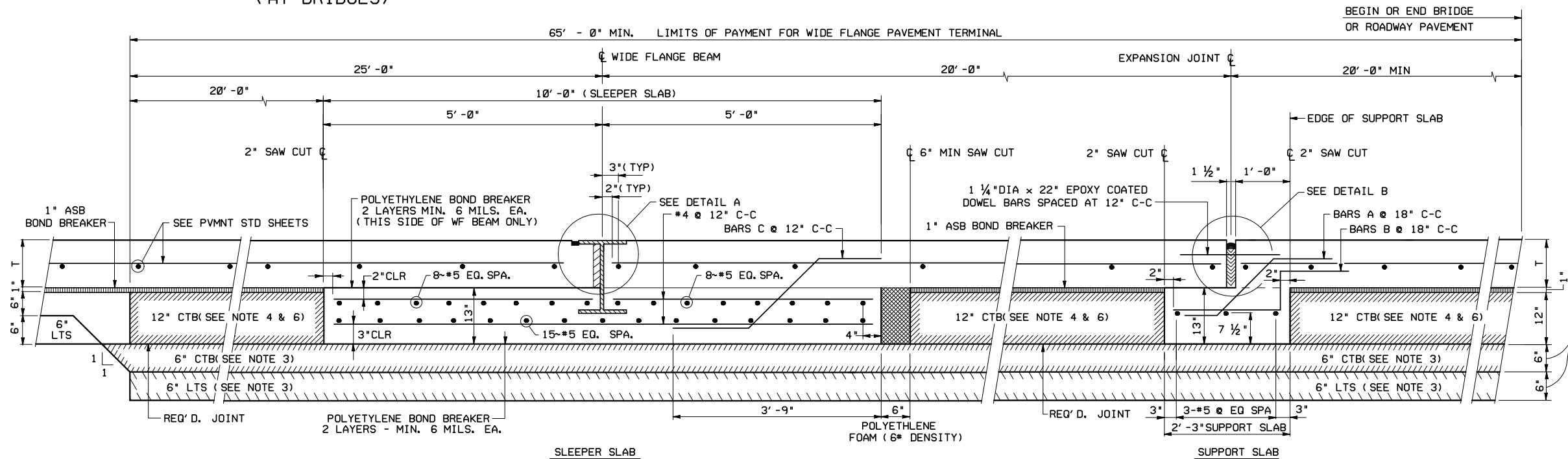
TYPICAL ROADWAY LAYOUT  
CONCRETE MEDIAN AND SHOULDERS  
(AT BRIDGES)



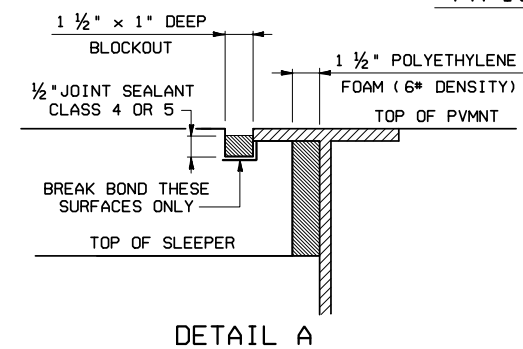
TYPICAL ROADWAY LAYOUT  
CONCRETE MEDIAN AND SHOULDERS  
(AT BRIDGES)

NOTES

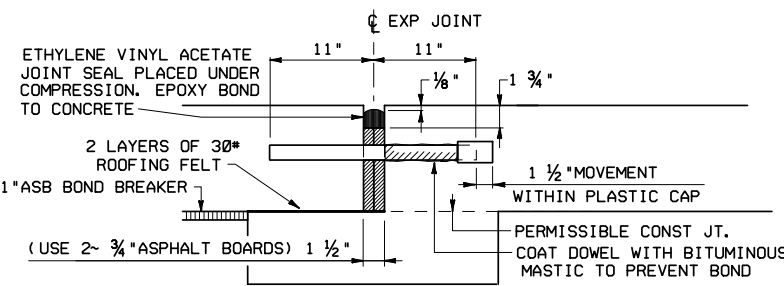
- BLOCK-OUT REQUIRED AT EACH END OF WIDE FLANGE BEAM ADJACENT TO 3/8 INCH END PLATE WHERE BLOCK-OUT IS PLACED ABUTTING CONCRETE PAVEMENT, RIPRAP OR STABILIZED BASE. THE BLOCKED OUT AREA WILL BE FILLED WITH POLYETHYLENE FOAM (6 POUND DENSITY). SEE SHEET 3 OF 3 FOR BLOCK-OUT DETAIL.
  - FOR ADDITIONAL DETAILS ON REINFORCEMENT MEMBER QUANTITIES AND THE WIDE FLANGE BEAM SEE SHEET 2 OF 3.
  - REPLACE 6 INCH LIME TREATED SUBGRADE AND 6 INCH CEMENT TREATED BASE WITH CEMENT STABILIZED BACK-FILL AT STRUCTURES WITH CEMENT STABILIZED BACKFILL EMBANKMENT. SEE "CEMENT STABILIZED BACKFILL EMBANKMENT" STANDARD SHEET FOR DETAILS.
  - 12 INCH CEMENT STABILIZED BACKFILL MAY BE SUBSTITUTED FOR 12 INCH CTB, AT CONTRACTOR'S OPTION, ON APPLICABLE STRUCTURES WITH CEMENT STABILIZED BACKFILL EMBANKMENT.
- CTB - CEMENT TREATED BASE  
LTS - LIME TREATED SUBGRADE  
CRCP - CONTINUOUSLY REINFORCED CONCRETE PAVEMENT  
JRCP - JOINTED REINFORCED CONCRETE PAVEMENT  
ASB - ASPHALT STABILIZED BASE  
T - PAVEMENT THICKNESS



TYPICAL SECTION THRU TERMINAL ANCHORAGE @ SLEEPER SLAB & SUPPORT SLAB



DETAIL A



DETAIL B

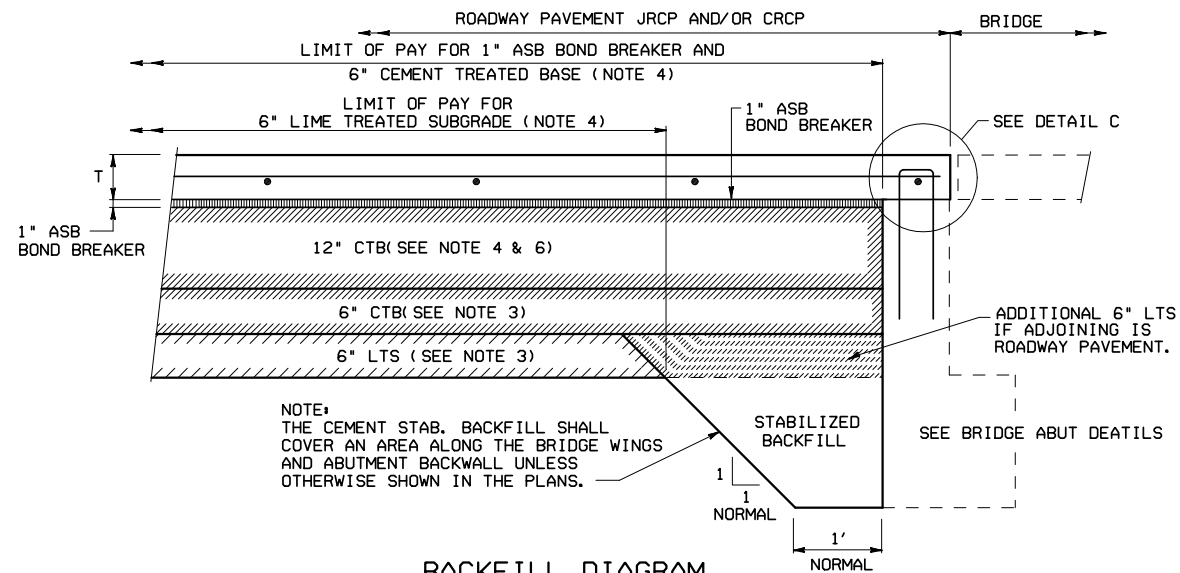
FOR MORE DETAILS AND LIMITS OF PAY FOR CTB & LTS SEE ABUTMENT BACKFILL DIAGRAM DETAIL ON SHEET 2 OF 3 OR THE PAVEMENT JUNCTURE DETAILS AS SHOWN IN PLANS.

Texas Department of Transportation  
Houston District

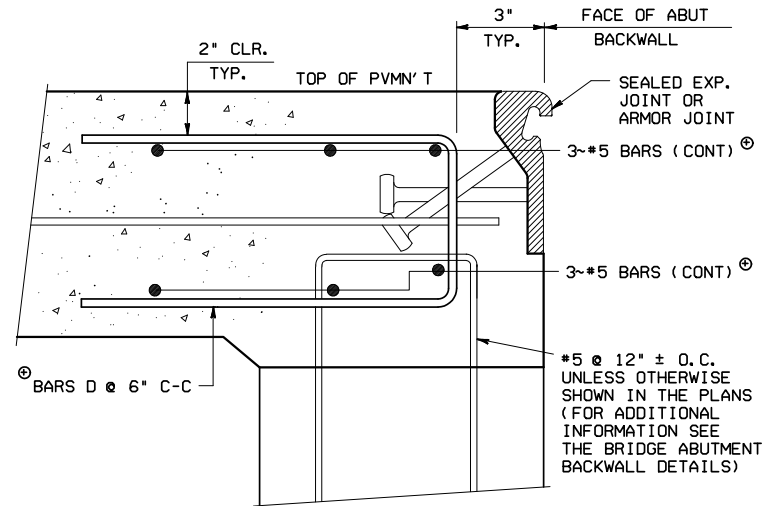
**WIDE FLANGE PAVEMENT TERMINALS**  
FOR CONTINUOUSLY & JOINTED REINFORCED CONCRETE PAVEMENT DETAILS  
(FOR USE AT BRIDGE END OR PAVEMENT TERMINUS)

**WFPT**

FILE#	STDB-3.DGN	DN#	TxDOT	CK#	TxDOT	DN#	TxDOT	CK#	TxDOT
©	TxDOT SEPT. 2004	DISTRICT	FED REG	PROJECT NO.	SHEET				
REVISIONS	HOUSTON	6	COUNTY	CONTROL	SECT	JOB	HIGHWAY		



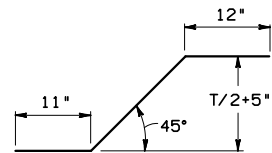
BACKFILL DIAGRAM



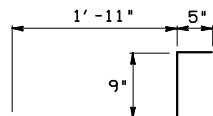
DETAIL C

(SHOWING ADDITIONAL REINFORCEMENT FOR ROADWAY PAVEMENT WITH SEALED EXPANSION JOINTS OR ARMOR JOINTS AT ABUTMENTS.)

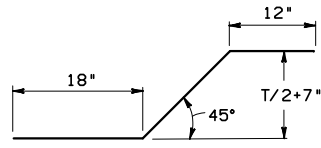
⊙ THE ADDITIONAL STEEL REQUIRED BY THE ABOVE DETAIL "C" SHALL NOT BE PAID FOR DIRECTLY, BUT SHALL BE CONSIDERED INCIDENTAL TO THE ITEM, "CONCRETE PAVEMENT".



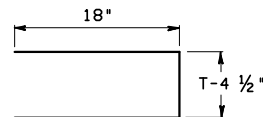
BARS A (#4)



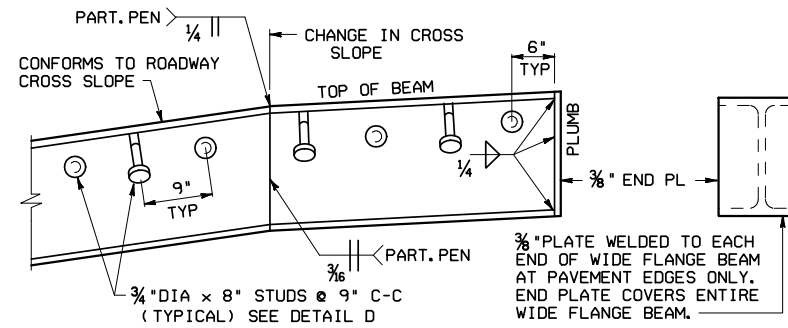
BARS B (#4)



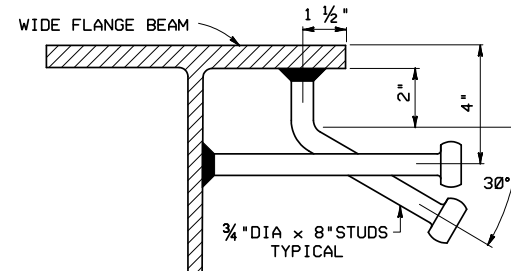
BARS C (#4)



BARS D (#5)



WIDE FLANGE DETAIL

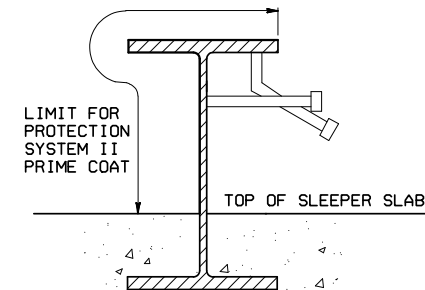


NOTE: STUDS SHALL BE ELECTRIC ARC END WELDED WITH COMPLETE FUSION. ANY STUD WHICH IS DISLODGED IN SHIPPING OR CAN BE DISLODGED BY HAMMER SHALL BE REPLACED.

DETAIL D

TABLE OF BEAM SIZES

PAVEMENT THICKNESS	WIDE FLANGE BEAM DESIGNATION
8"	W14 X 68
9"	W14 X 68
10"	W16 X 89
11"	W16 X 89
12"	W18 X 97
13"	W18 X 97
14"	W21 X111
15"	W21 X111



WIDE FLANGE PAINTING DETAIL

SEE "TABLE OF BEAM SIZES"

NOTES (CONT)

- THIS STANDARD WILL BE USED WITH SPECIAL PROVISION " CONCRETE PAVEMENT TERMINALS THIS ITEM WILL BE MEASURED BY THE LINEAR FOOT OF WIDE FLANGE BEAM COMPLETE IN PLACE.
- WIDE FLANGE BEAM, SUPPORT SLAB, SLEEPER SLAB, 12 INCHES OF CEMENT TREATED BASE, POLYETHYLENE BONDBREAKER AND ANY EXCAVATION NECESSARY WILL NOT BE PAID FOR DIRECTLY, BUT WILL BE CONSIDERED INCIDENTAL TO ITEM 368
- POLYETHYLENE FOAM (6 POUND DENSITY), SAW CUTS, EXPANSION JOINTS, EPOXY COATED DOWEL AND EXPANSION JOINT MATERIALS WILL NOT BE PAID FOR DIRECTLY BUT SHALL BE CONSIDERED INCIDENTAL TO THE ITEM 360.
- THE CONCRETE PAVEMENT, 1 INCH ASB BONDBREAKER, 6 INCH PORTLAND CEMENT TREATED BASE AND 6 INCH LIME TREATED SUBGRADE WILL BE PAID FOR UNDER THE APPROPRIATE BID ITEMS.
- SHEAR CUTTING OF DOWEL BARS IS PROHIBITED.
- EPOXY COATING OF DOWEL BARS PER SPECIFICATION ITEM 440.
- CEMENT STABILIZED BACKFILL IS REQUIRED AT ALL ABUTMENTS.

- CTB - CEMENT TREATED BASE
- LTS - LIME TREATED SUBGRADE
- CRCP - CONTINUOUSLY REINFORCED CONCRETE PAVEMENT
- JRCP - JOINTED REINFORCED CONCRETE PAVEMENT
- ASB - ASPHALT STABILIZED BASE
- T - PAVEMENT THICKNESS

ITEM		ESTIMATED QUANTITIES (FOR CONTRACTOR'S INFORMATION ONLY)							
		PAVEMENT THICKNESS							
		8"	9"	10"	11"	12"	13"	14"	15"
SLEEPER SLAB	CONCRETE	0.40 CY/LF	0.40 CY/LF	0.40 CY/LF	0.40 CY/LF	0.40 CY/LF	0.40 CY/LF	0.40 CY/LF	0.40 CY/LF
	REINFORCING STEEL	49.0 LBS/LF	49.1 LBS/LF	49.2 LBS/LF	49.3 LBS/LF	49.5 LBS/LF	49.6 LBS/LF	49.7 LBS/LF	49.8 LBS/LF
SUPPORT SLAB	CONCRETE	0.09 CY/LF	0.09 CY/LF	0.09 CY/LF	0.09 CY/LF	0.09 CY/LF	0.09 CY/LF	0.09 CY/LF	0.09 CY/LF
	REINFORCING STEEL	6.2 LBS/LF	6.3 LBS/LF	6.3 LBS/LF	6.4 LBS/LF	6.5 LBS/LF	6.5 LBS/LF	6.6 LBS/LF	6.6 LBS/LF
STEEL BEAM (WEIGHT OF WIDE FLANGE BEAM AND STUDS)		69.51 LBS/LF +2 PLATES @ 14.87 LBS EA	69.51 LBS/LF +2 PLATES @ 14.87 LBS EA	90.51 LBS/LF +2 PLATES @ 18.46 LBS EA	90.51 LBS/LF +2 PLATES @ 18.46 LBS EA	98.51 LBS/LF +2 PLATES @ 22.01 LBS EA	98.51 LBS/LF +2 PLATES @ 22.01 LBS EA	112.51 LBS/LF +2 PLATES @ 28.27 LBS EA	112.51 LBS/LF +2 PLATES @ 28.27 LBS EA
12" CEMENT TREATED BASE		1.95 CY/LF (BASED ON JOINTS BEING NORMAL TO THE PAVEMENT CENTERLINE)							

Texas Department of Transportation  
Houston District

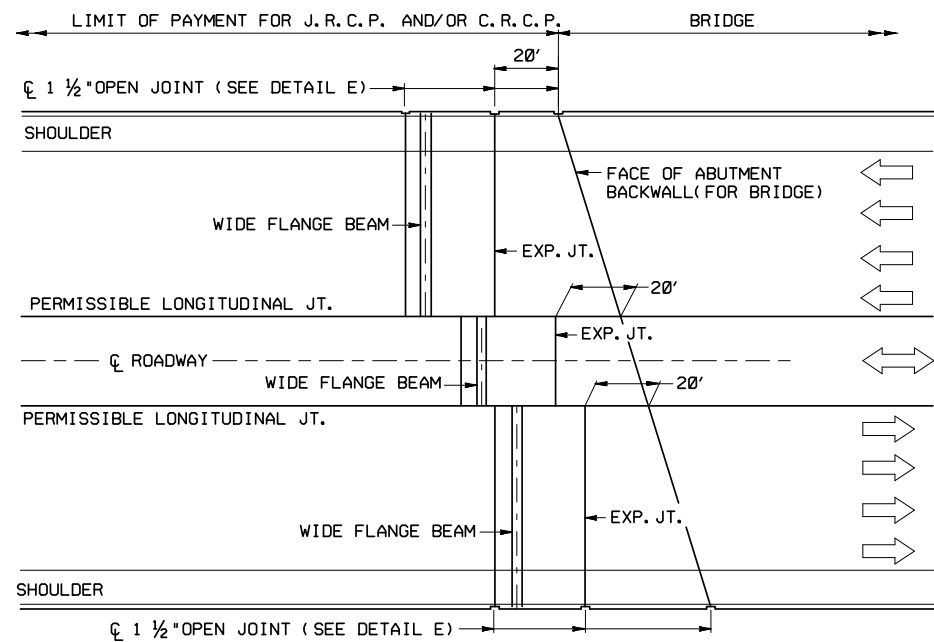
WIDE FLANGE PAVEMENT TERMINALS

FOR CONTINUOUSLY & JOINTED REINFORCED CONCRETE PAVEMENT DETAILS (FOR USE AT BRIDGE END OR PAVEMENT TERMINUS)

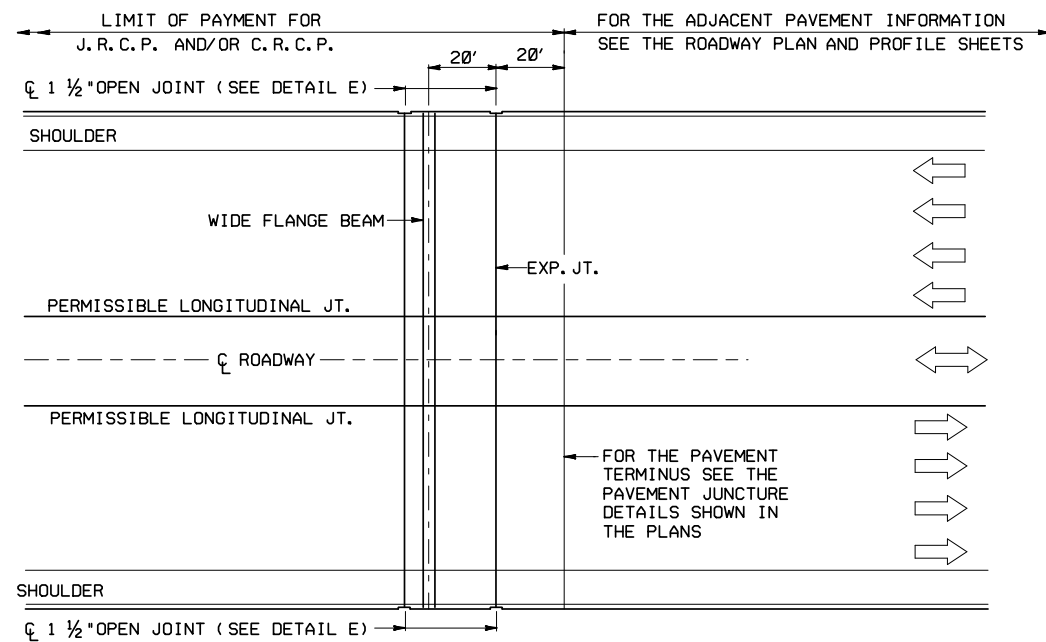
WFPT

FILE#	STDB-3.DGN	DW#	TxDOT	CK#	TxDOT	DW#	TxDOT	CK#	TxDOT
©	TxDOT SEPT, 2004	DISTRICT	FED REG	PROJECT NO.	SHEET				
REVISIONS	HOUSTON	6	COUNTY	CONTROL	SECT	JOB	HIGHWAY		

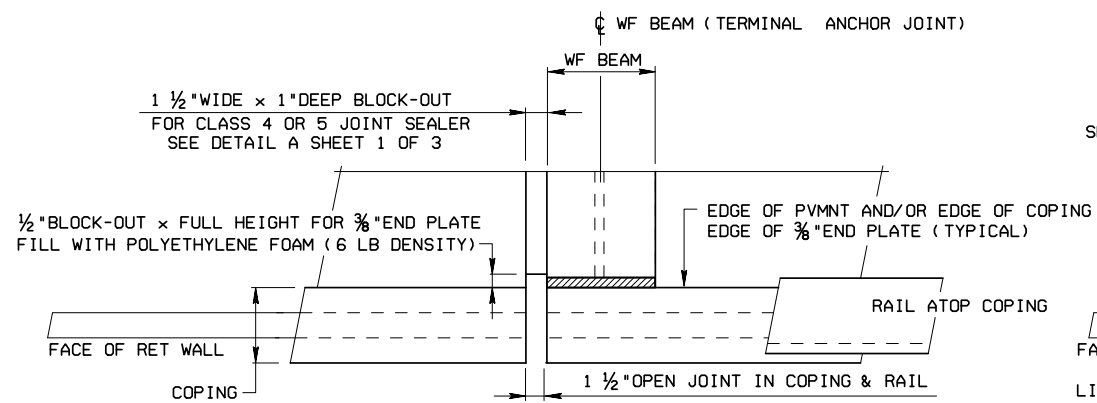
STDB-3



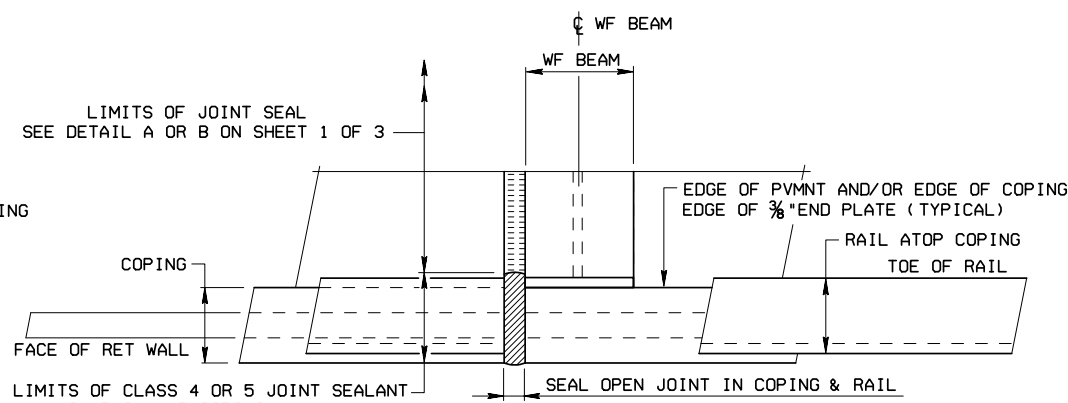
PLAN  
SHOWING OPEN JOINT LAYOUT



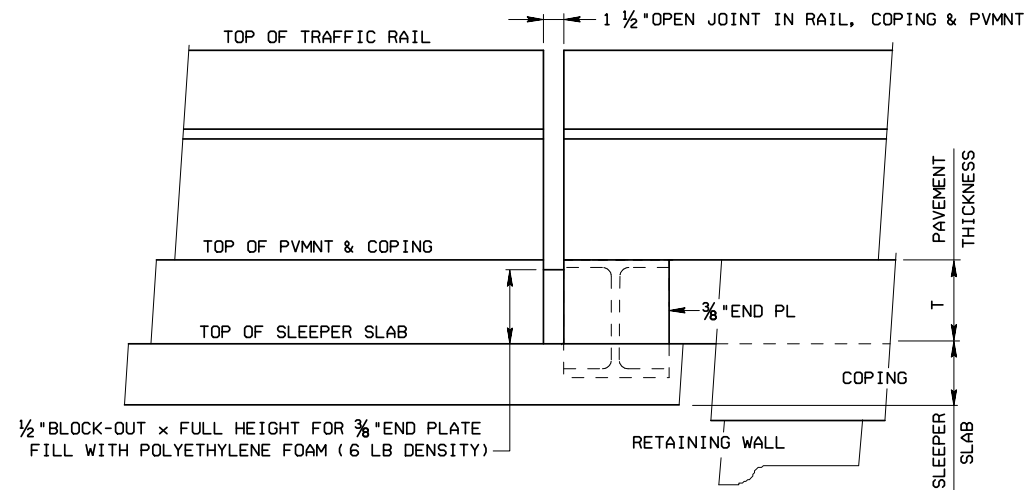
PLAN  
SHOWING OPEN JOINT LAYOUT



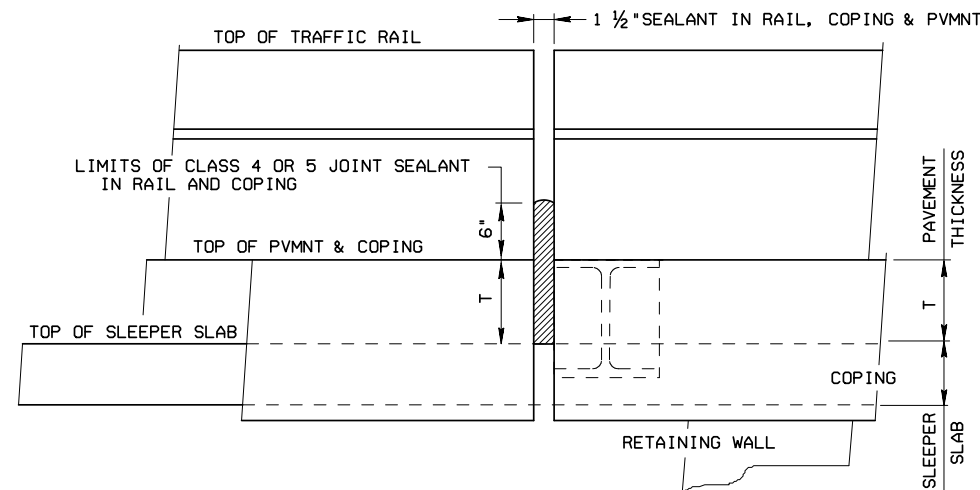
PLAN SHOWING OPEN JOINTS & BLOCK-OUT



PLAN SHOWING JOINT SEALANT



ELEVATION SHOWING OPEN JOINTS & BLOCK-OUT



ELEVATION SHOWING JOINT SEALANT

DETAIL E

SHOWN @ WIDE FLANGE ~ ALL OTHER JOINTS SIMILAR



WIDE FLANGE PAVEMENT TERMINALS

FOR CONTINUOUSLY & JOINTED REINFORCED CONCRETE PAVEMENT DETAILS (FOR USE AT RETAINING WALLS)

WFPT

FILE: STDB-3.DGN	DW: TXDOT	CK: TXDOT	DW: TXDOT	CK: TXDOT
© TXDOT SEPT. 2004	DISTRICT FED REG	PROJECT NO.	SHEET	
REVISIONS	HOUSTON	6		
	COUNTY	CONTROL SECT	JOB	HIGHWAY