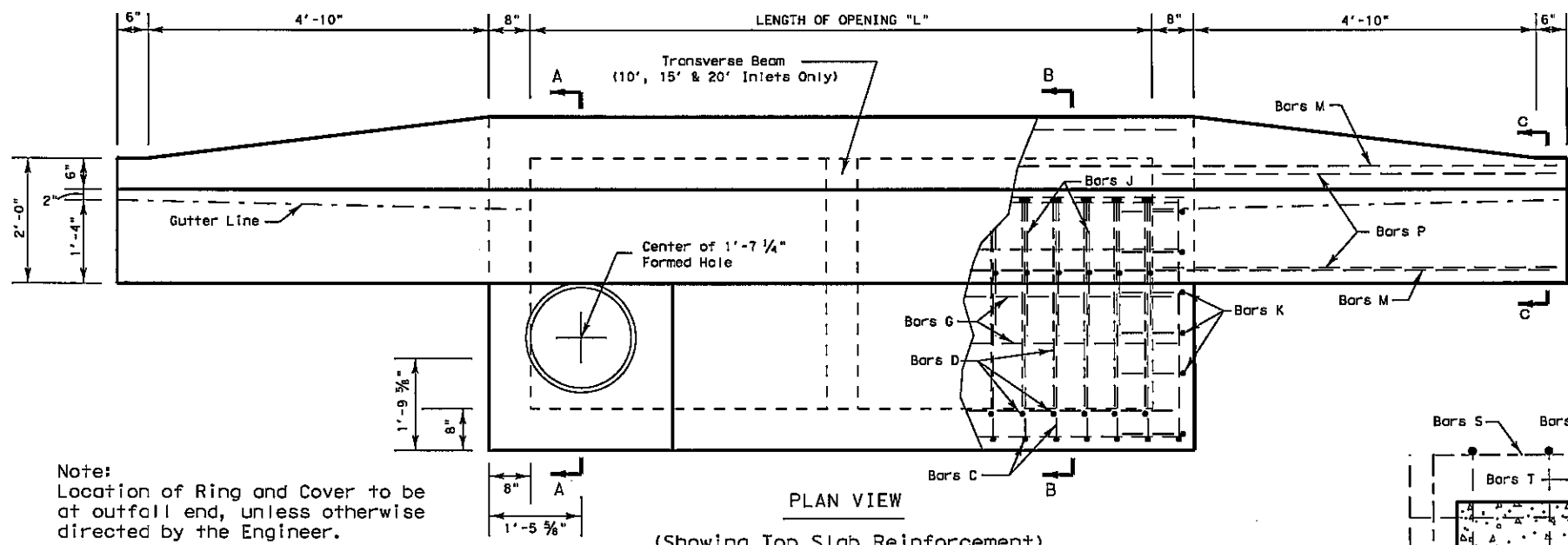
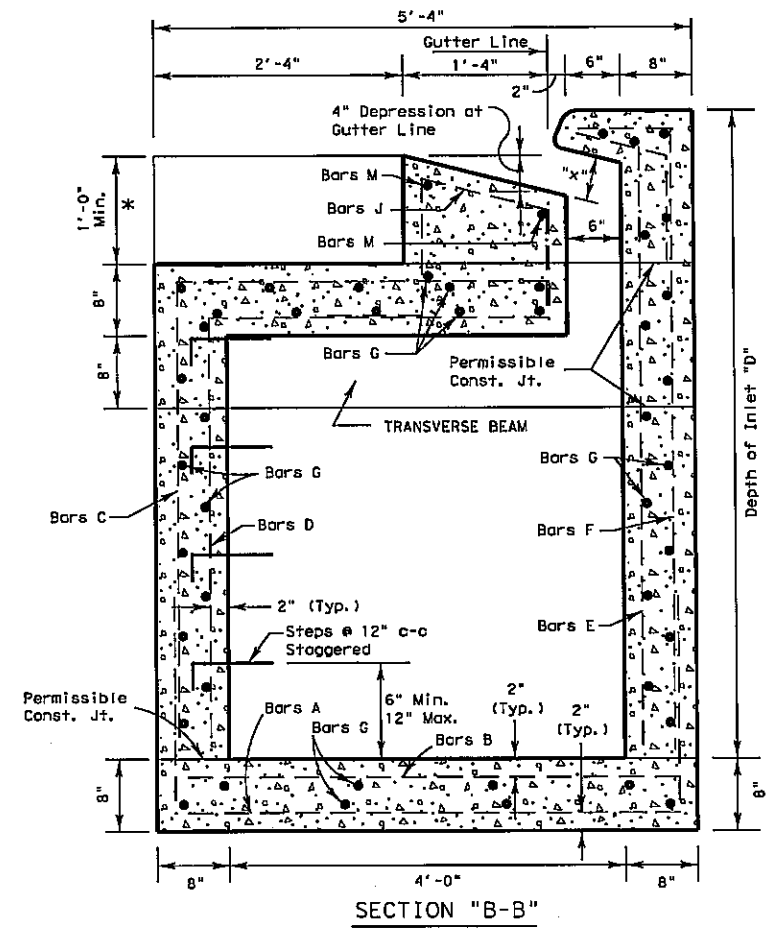
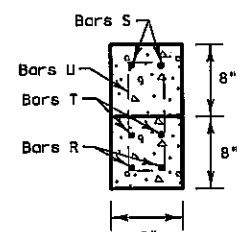


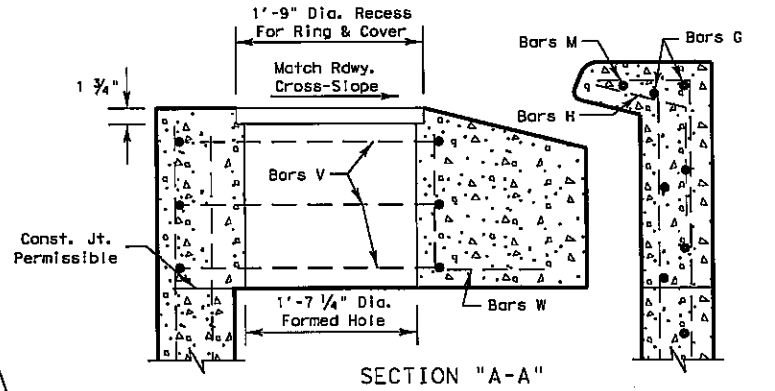
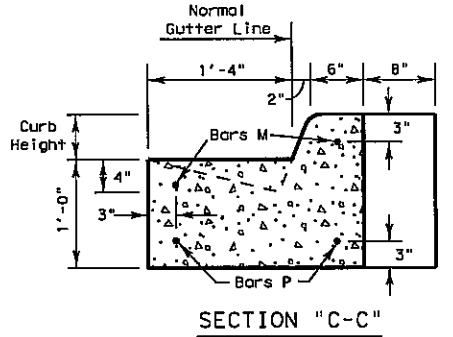
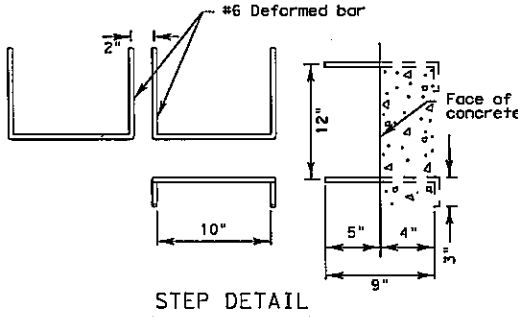
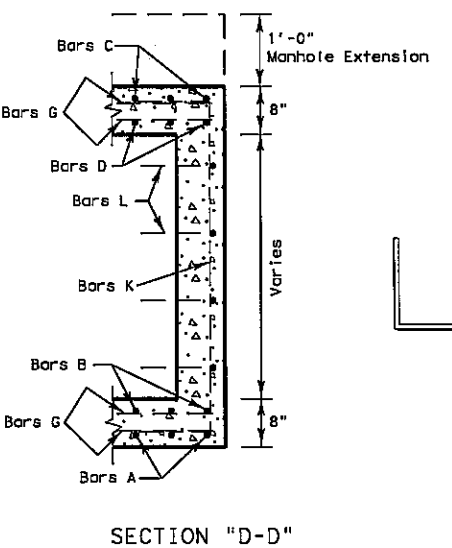
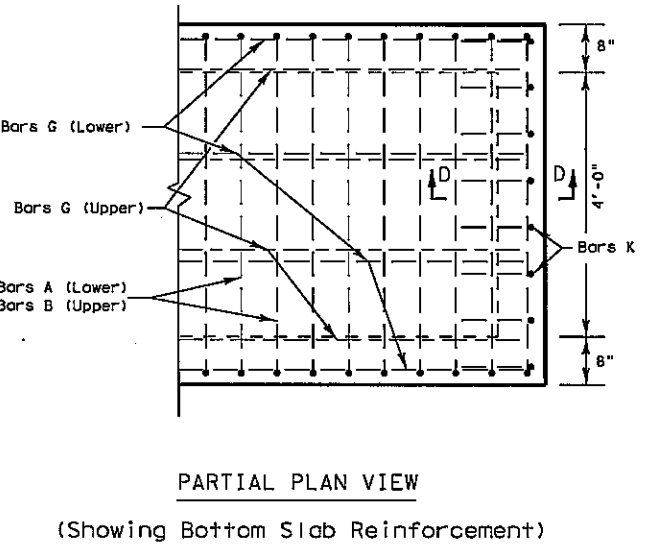
DISCLAIMER: The use of this standard is governed by the "Texas Engineering Practice Act". No warranty of any kind is made by TxDOT for any purpose whatsoever. TxDOT assumes no responsibility for the conversion of this standard to other formats or for incorrect results or damages resulting from its use.



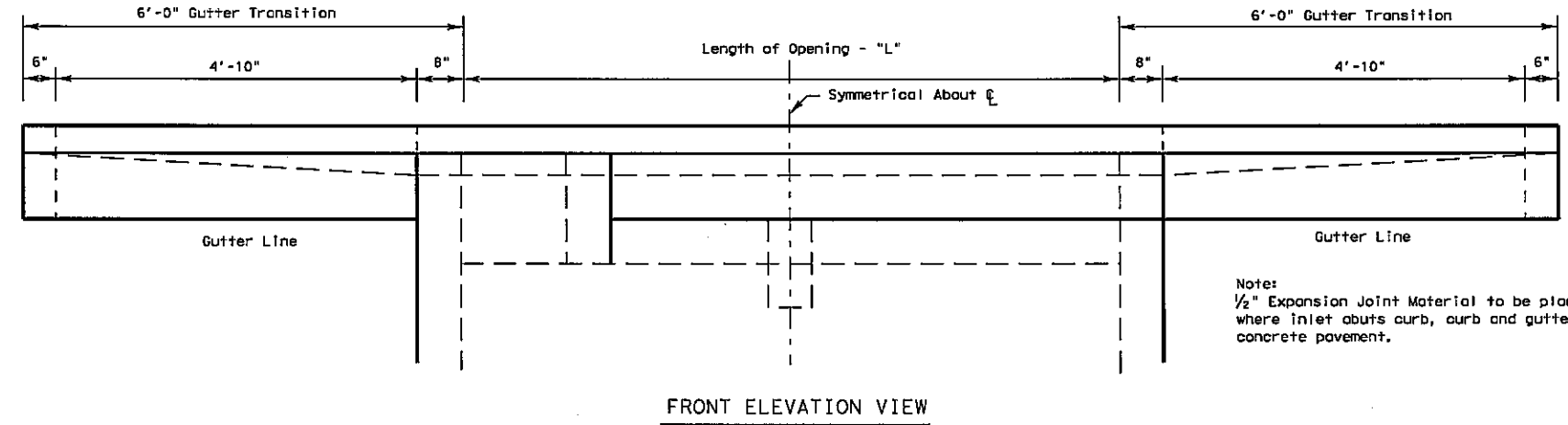
THROAT DIMENSION	
CURB HEIGHT	"X"
5"	5"
6"	5 1/8"
7"	6 1/4"
8"	6 1/2"



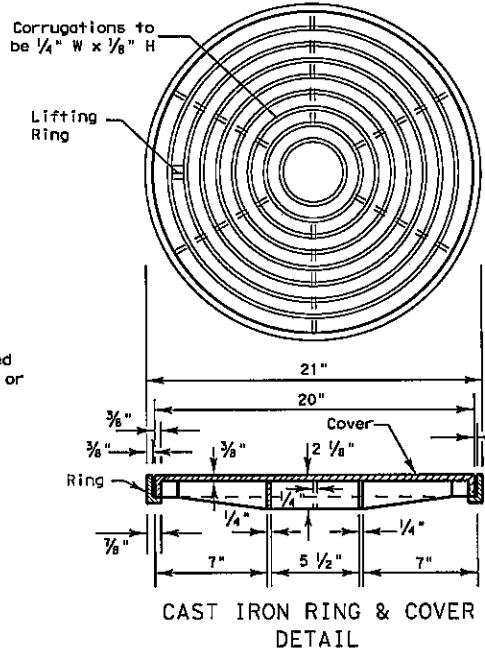
\* Match depth of pavement structure (Base and Surface). Adjust bar lengths as directed by the Engineer.



Note: See Sheet 2 of 2 for Details of Reinforcing Steel, Estimated Quantities, and General Notes.



Note: 1/2" Expansion Joint Material to be placed where inlet abuts curb, curb and gutter or concrete pavement.



REVISED ON 9/10/08

© 2002 by Texas Department of Transportation; all rights reserved.

Texas Department of Transportation  
**DALLAS DISTRICT**

TYPE 2  
CURB INLET  
FOR USE W/ 5" TO 8" BARRIER CURB  
5', 10', 15' & 20' OPENINGS

**CI (2) - 02 (DAL)**

SHEET 1 OF 2 SHEETS

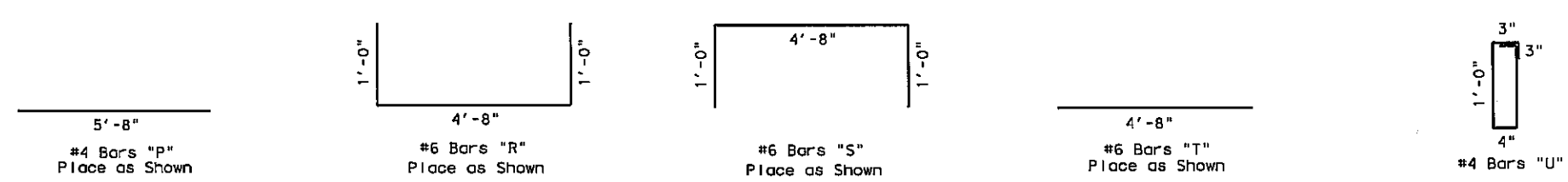
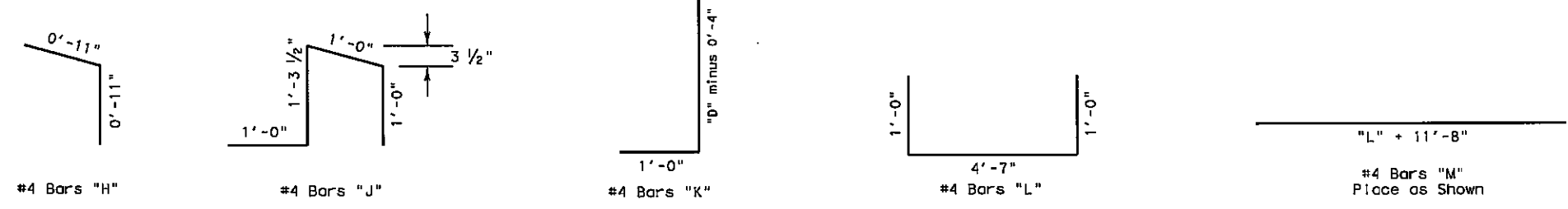
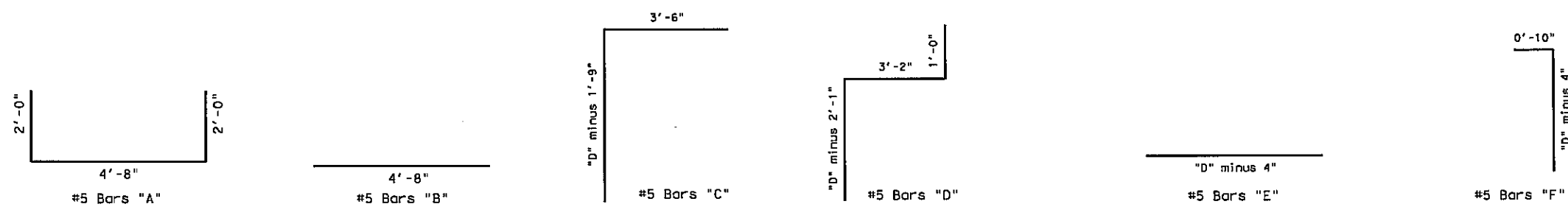
FED. RD. DIV. NO. 6	PROJECT NO.	SHEET NO. 6
STATE TEXAS	DIST. DAL	COUNTY
CONTRACT CON.	SECTION SECT.	JOB JOB
		HIGHWAY NO.

LEVELS DISPLAYED	
1	
2	
3	
4	
5	
6	
7	
8	
9	
10	

### Bill Of Reinforcing Steel for Inlet Depth of 6'

DISCLAIMER: This standard is governed by the "Texas Engineering Practice Act". No warranty of any kind is made by TXDOT for any purpose whatsoever. TXDOT assumes no responsibility for the conversion of this standard to other formats or for incorrect results or damages resulting from its use.

Length of Opening	#5 Bars A @ 6"		#5 Bars B @ 6"		#5 Bars C @ 6"		#5 Bars D @ 6"		#5 Bars E @ 6"		#5 Bars F @ 6"		#4 Bars G		#4 Bars H @ 12"		#4 Bars J @ 12"		#4 Bars K @ 8"		#4 Bars L @ 12"		#4 Bars M		#4 Bars P		#6 Bars R		#6 Bars S		#6 Bars T		#4 Bars U @ 10"		#4 Bars V @ 5"		#4 Bars W			
	No.	Wt.	No.	Wt.	No.	Wt.	No.	Wt.	No.	Wt.	No.	Wt.	No.	Length	Wt.	No.	Wt.	No.	Wt.	No.	Wt.	No.	Wt.	No.	Length	Wt.	No.	Wt.	No.	Wt.	No.	Wt.	No.	Wt.	No.	Wt.				
5'	12	108.47	12	58.41	12	109.56	12	105.34	12	70.92	12	81.35	20	6.83	91.25	6	7.35	6	17.2	14	62.35	4	17.59	3	16'8"	33.4	2	7.57	2	21.03	2	21.03	2	15.02	4	8.46	3	24.72	6	9.02
10'	22	198.87	22	107.08	22	200.86	22	193.13	22	130.03	22	149.15	20	11.83	158.05	11	13.47	11	31.54	14	62.35	4	17.59	3	21'8"	43.42	2	7.57	2	21.03	2	21.03	2	15.02	4	8.46	3	24.72	6	9.02
15'	32	289.26	32	155.75	32	292.16	32	280.91	32	189.13	32	216.94	20	16.83	224.85	16	19.59	16	45.87	14	62.35	4	17.59	3	26'8"	53.44	2	7.57	2	21.03	2	21.03	2	15.02	4	8.46	3	24.72	6	9.02
20'	42	379.65	42	204.43	42	383.46	42	368.7	42	248.23	42	284.74	20	21.83	291.65	21	25.72	21	60.2	14	62.35	4	17.59	3	31'8"	63.46	2	7.57	2	21.03	2	21.03	2	15.02	4	8.46	3	24.72	6	9.02



"L" + 1'-10"  
 #4 Bars "G"  
 Bar Spacing: Bottom Slab, Lower Mat - 1'-6"  
 Bottom Slab, Upper Mat - 1'-3"  
 Back Wall, Outer Mat - 0'-9"  
 Back Wall, Inner Mat - 0'-10"  
 Front Wall, Outer Mat - 0'-9"  
 Front Wall, Inner Mat - 0'-10"  
 Upper Slab, Lower Mat - 0'-9"  
 Upper Slab, Upper Mat - 0'-10"  
 Gutter - Place as Shown

#### GENERAL NOTES

1. All concrete shall be Class "A".
2. Chamfer all exposed corners 3/4" except where otherwise noted.
3. Dimensions related to reinforcing steel are to the centers of bars.
4. Field cut and bend bars as necessary to accommodate storm drain pipe.
5. Cast iron ring and cover shall conform to Item 471.
6. Depths other than those shown may be used whenever necessary. Quantities for other depths within the limits of the tables may be found by interpolation.
7. During Stage 1 construction, inlets will not be constructed above subgrade elevation unless permission is granted by the Engineer.
8. A temporary wood cover shall be installed after Stage 1 is completed, and will remain in place until Stage 2 begins.
9. The location of inlet as shown in the plans refers to the control point of the face of curb and mid-point of the inlet.
10. Bond breaker to be placed between inlet deck and concrete pavement. A sealed 1/2" expansion joint shall be placed along all vertical faces abutting concrete pavement. Seal joint with Class 3,4,5 or 7 joint sealant.

#### Summary of Quantities

	C.Y. Class "A" Concrete		Lbs. Reinforcing Steel	
	"L" (F+)	"D" = 6'	Add P.L.F.	"D" = 6'
5'	5.04	76.56	671.25	6.27
10'	8.3	113.59	1051.12	8.83
15'	13.99	160.00	1430.98	11.09
20'	17.71	185.25	1810.87	13.02

Pipe Diameter	Reduction One Pipe C.U.L. YG.
15"	0.04
18"	0.05
21"	0.08
24"	0.09
27"	0.11
30"	0.14
33"	0.17
36"	0.20
39"	0.23
42"	0.26
45"	0.30
48"	0.35

#4 Bars "W"  
 6 EACH TO BE PLACED  
 AT 16" SPACING  
 ALONG GUTTER SIDE  
 AND INLET SIDE OF RING.  
 (3 EACH SIDE)

LEVELS DISPLAYED  
 1 1/2 3 4 5 6 7 8 9 10 11 12 13 14 15 16 17 18 19 20 21 22 23 24 25 26 27 28 29 30

**Texas Department of Transportation**  
**DALLAS DISTRICT**  
 TYPE 2  
 CURB INLET  
 FOR USE W/ 5" TO 8" BARRIER CURB  
 5', 10', 15' & 20' OPENINGS  

## CI (2) - 02 (DAL)

 SHEET 2 OF 2 SHEETS

FED. RD. DIV. NO.	PROJECT NO.	SHEET NO.
6		
STATE	DIST.	COUNTY
TEXAS	DAL	
CONT.	SECT.	JOB
		HIGHWAY NO.