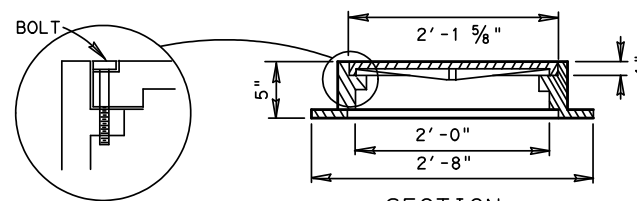
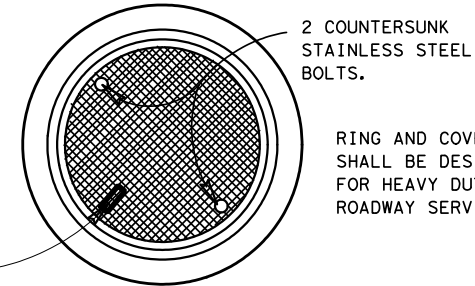


THE MANHOLE RING MAY BE INSTALLED AS TOP OR BOTTOM FLANGED. THE LIDS SHALL SEAT PROPERLY IN EITHER CONFIGURATION.

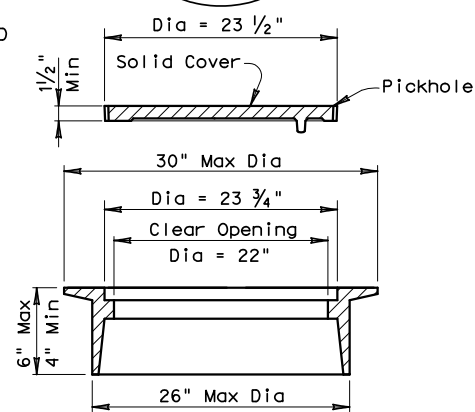
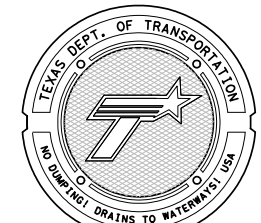


24" C.I. MANHOLE RING AND BOLTED COVER

ESTIMATED QUANTITIES - FOR H = 3'-10"

REINFORCING STEEL					
BAR	NO.	SIZE	SPAC	LENGTH	WEIGHT
A	23	#4	6"	13'-9"	211
B	4	#5	-	11'-2"	47
C	17	#5	6"	5'-4"	95
E	2	#4	8"	9'-3"	12
F	15	#4	11"	13'-10"	139
G	6	#4	11"	4'-2"	17
H	10	#4	11"	4'-2"	28
I	3	#4	-	2'-4"	5
J	23	#4	6"	4'-2"	64
M	21	#4	6"	2'-11"	41
N	2	#4	-	3'-0"	4
P	6	#5	-	4'-2"	26
TOTAL - REINF. STEEL - LBS.					689 *
TOTAL - CLASS "C" CONC. - C.Y.					4.27 *

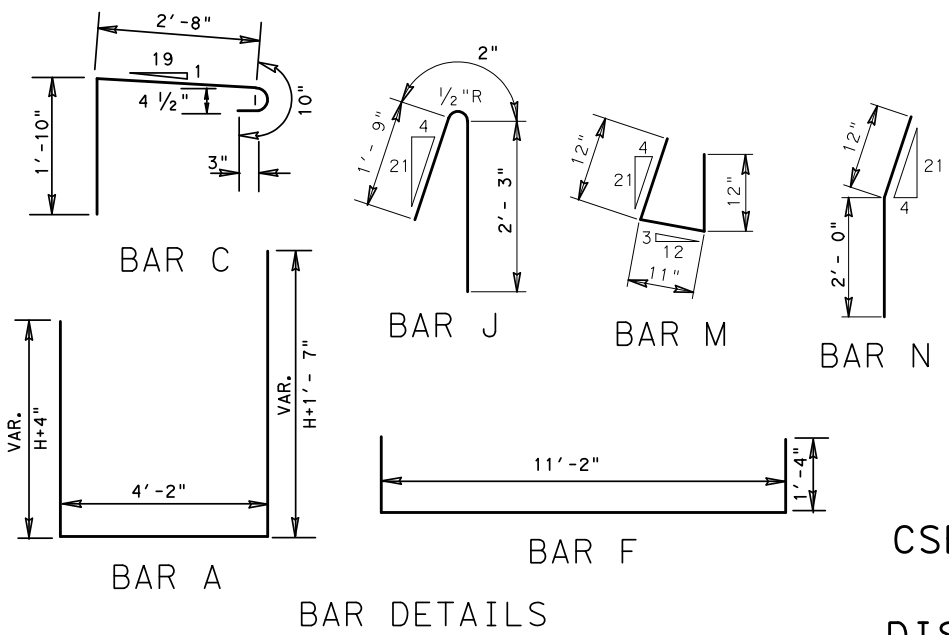
* FOR CONTRACTOR'S INFORMATION ONLY. NO DEDUCTIONS MADE FOR PIPES. QUANTITIES VARY W/"H"



RING AND COVER DETAILS
Approximate Weight = 255 lb

GENERAL NOTES:

- ADDITIONAL REINFORCING STEEL REQUIRED IN THE CTB AT EACH INLET SHALL BE INCLUDED IN THE UNIT PRICE FOR THE INLET.
- OUTFALL PIPES WHICH LAY TRANSVERSE TO ROADWAY, AT INLETS ON GRADE, WILL BE PLACED ADJACENT TO THE WALL AT LOW END OF INLET.
- CTB MUST BE CAST IN PLACE FROM BEGIN GUTTER TRANSITION TO END GUTTER TRANSITION INCLUDING OVER INLET.
- PAYMENT FOR INLET CONC., REINF. STEEL, RING & COVER AND STEPS SHALL BE INCLUDED IN UNIT COST OF ITEM 465 BY THE EACH "MANHOLES & INLETS".
- THE CTB OVER THE INLET WILL BE PAID FOR UNDER ITS OWN BID ITEM.



REVISED ON 9/10/08
CSB INLET TYPE 2
DALLAS
DISTRICT STANDARD

FED. RD. DIV. NO.	PROJECT NO.	SHEET NO.
6		
STATE	STATE DISTRICT	COUNTY
TEXAS	DAL	
CONT.	SECT.	JOB HIGHWAY NO.