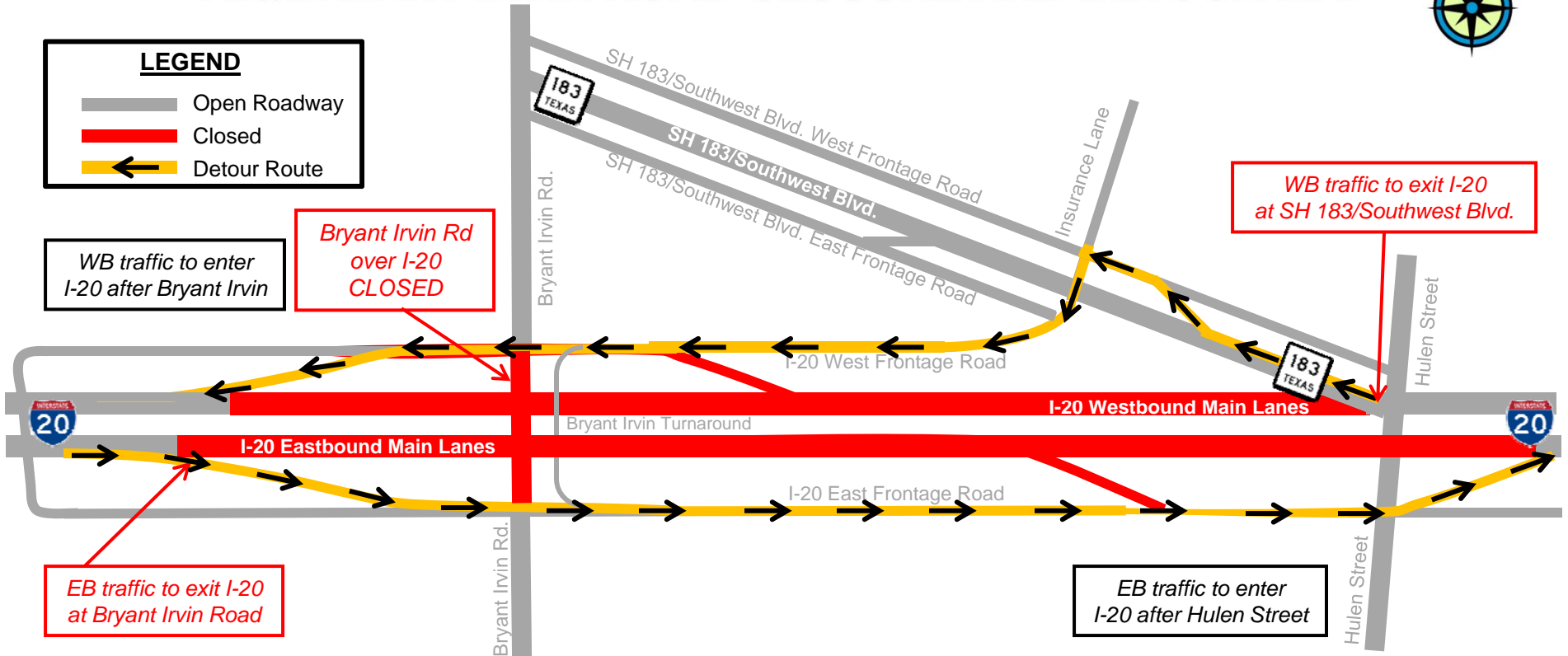


# CHISHOLM TRAIL PARKWAY I-20/BRYANT IRVIN ROAD CLOSURE AND DETOUR MAP



**LEGEND**

- Open Roadway
- Closed
- Detour Route



*EB traffic to exit I-20 at Bryant Irvin Road*

*Bryant Irvin Rd over I-20 CLOSED*

*WB traffic to enter I-20 after Bryant Irvin*

*WB traffic to exit I-20 at SH 183/Southwest Blvd.*

*EB traffic to enter I-20 after Hulen Street*

**WHERE:** East and westbound Interstate 20 (I-20) from Bryant Irvin Road to Hulen Street  
Bryant Irvin Road over I-20

**WHEN:** Tuesday, August 30, 8 p.m. to 5 a.m., weather permitting

**WHAT:** Interstate 20 will be closed Tuesday night in both directions to pour the concrete bridge deck for the new southbound SH121-Chisholm Trail Parkway frontage road. To facilitate the detour of traffic, the Bryant Irvin Road bridge will be closed to thru traffic over I-20. Eastbound motorists will exit at Bryant Irvin Road and follow the detour route and enter I-20 after Hulen Street. Westbound motorists will exit at SH 183/Southwest Boulevard and follow the detour route and enter I-20 after Bryant Irvin Road. Police will be posted at the intersections to facilitate the flow of both east and westbound traffic.

