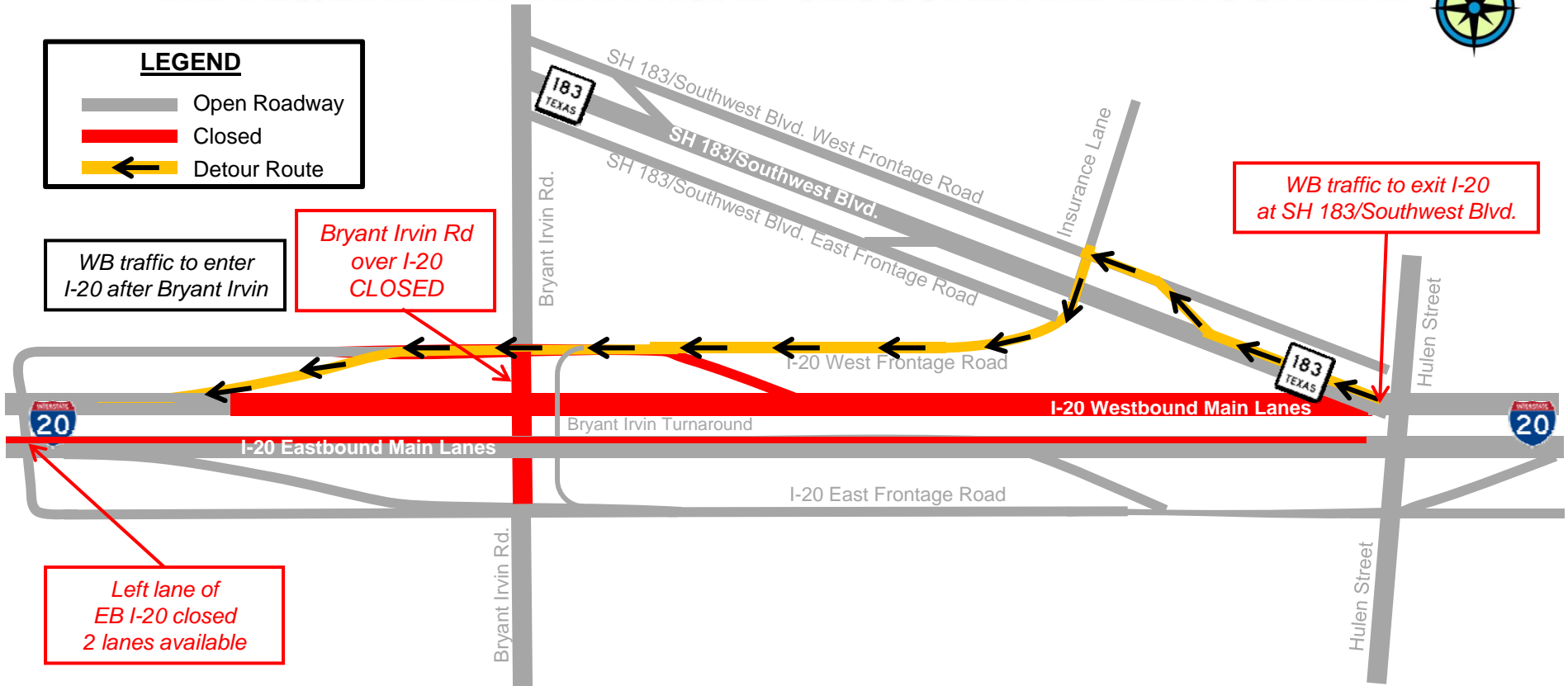


CHISHOLM TRAIL PARKWAY WB I-20/BRYANT IRVIN ROAD CLOSURE AND DETOUR MAP



LEGEND

- Open Roadway
- Closed
- ← Detour Route



WHERE: Interstate 20 (I-20) westbound at SH 183 (Southwest Boulevard)

WHEN: Tuesday, August 2, 8 p.m. to 5 a.m., weather permitting

WHAT: The I-20 westbound main lanes will be closed Tuesday night at SH 183/Southwest Boulevard to place the beams for the new SH121-Chisholm Trail Parkway frontage roads. To facilitate the detour of traffic, the Bryant Irvin Road bridge will be closed to thru traffic over I-20. Westbound motorists will exit at SH 183/Southwest Boulevard and follow the detour route and enter I-20 after Bryant Irvin Road. The left lane of eastbound I-20 will also be closed with two lanes still available for thru traffic.

