



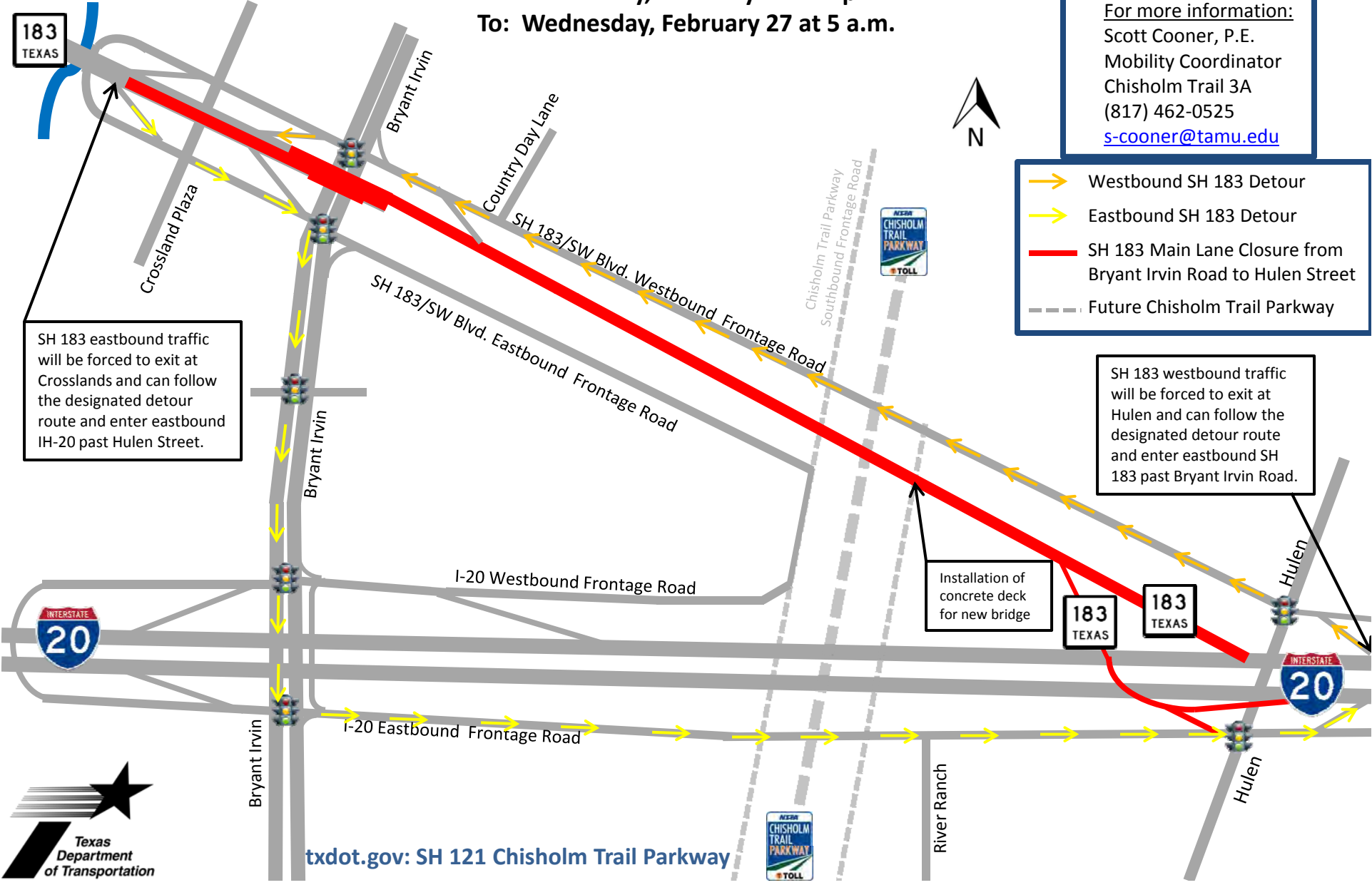


# CHISHOLM TRAIL PARKWAY SH 183 Overnight Main Lane Closure

**From: Tuesday, February 26 at 8 p.m.**  
**To: Wednesday, February 27 at 5 a.m.**

For more information:  
Scott Cooner, P.E.  
Mobility Coordinator  
Chisholm Trail 3A  
(817) 462-0525  
[s-cooner@tamu.edu](mailto:s-cooner@tamu.edu)

-  Westbound SH 183 Detour
-  Eastbound SH 183 Detour
-  SH 183 Main Lane Closure from Bryant Irvin Road to Hulen Street
-  Future Chisholm Trail Parkway



SH 183 eastbound traffic will be forced to exit at Crosslands and can follow the designated detour route and enter eastbound IH-20 past Hulen Street.

SH 183 westbound traffic will be forced to exit at Hulen and can follow the designated detour route and enter eastbound SH 183 past Bryant Irvin Road.

Installation of concrete deck for new bridge



[txdot.gov](http://txdot.gov): SH 121 Chisholm Trail Parkway