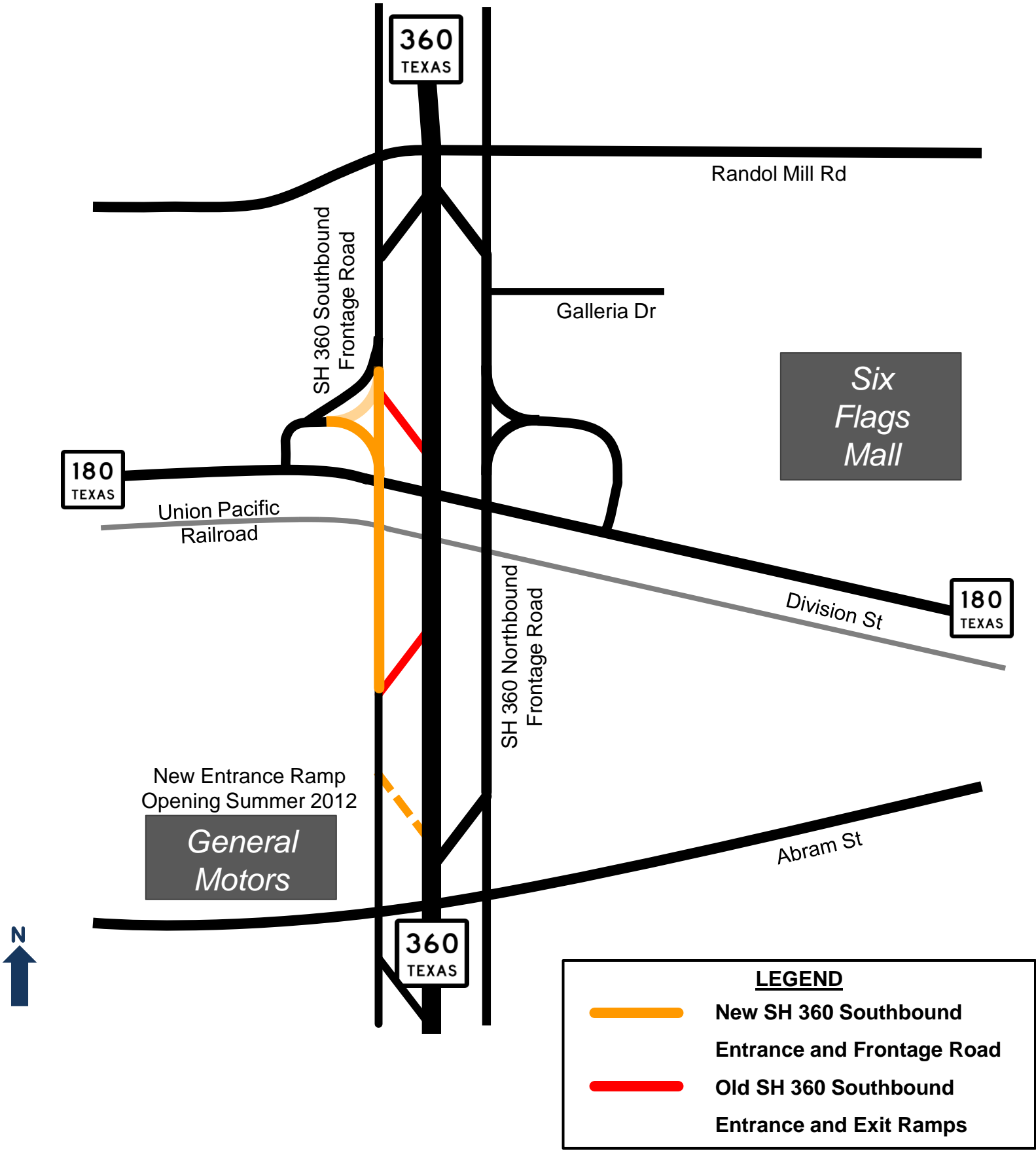


SH 360 SOUTHBOUND FRONTAGE ROAD OPENING

Effective March 17, 2012



WHY: Opening new permanent SH 360 southbound frontage road. The new entrance ramp access from SH 180/Division Street and Randol Mill Road will open summer 2012.

WHAT: The new permanent SH 360 southbound entrance ramp from SH 180/Division Street north of Abram Street will open summer 2012. In the interim, southbound traffic will enter SH 360 south of Abram Street.

A new frontage road will also open between Randol Mill Road and Abram Road. This now connects the frontage road system under the Union Pacific Railroad bridge, creating a continuous frontage road system from the Trinity River to I-20.

The new frontage road opening also completes the new access from SH 180/Division Street.

The SH 360 southbound exit ramp to Abram Street will be closed. Traffic will be directed to use the SH 180/Division Street exit ramp.

Remaining heavy construction will now focus on building new highway mainlanes while maintaining 3 lanes of traffic in each direction.

The project is scheduled for completion summer 2012.



Information Provided By:
 817.462.0505
 Prepared February 29, 2012