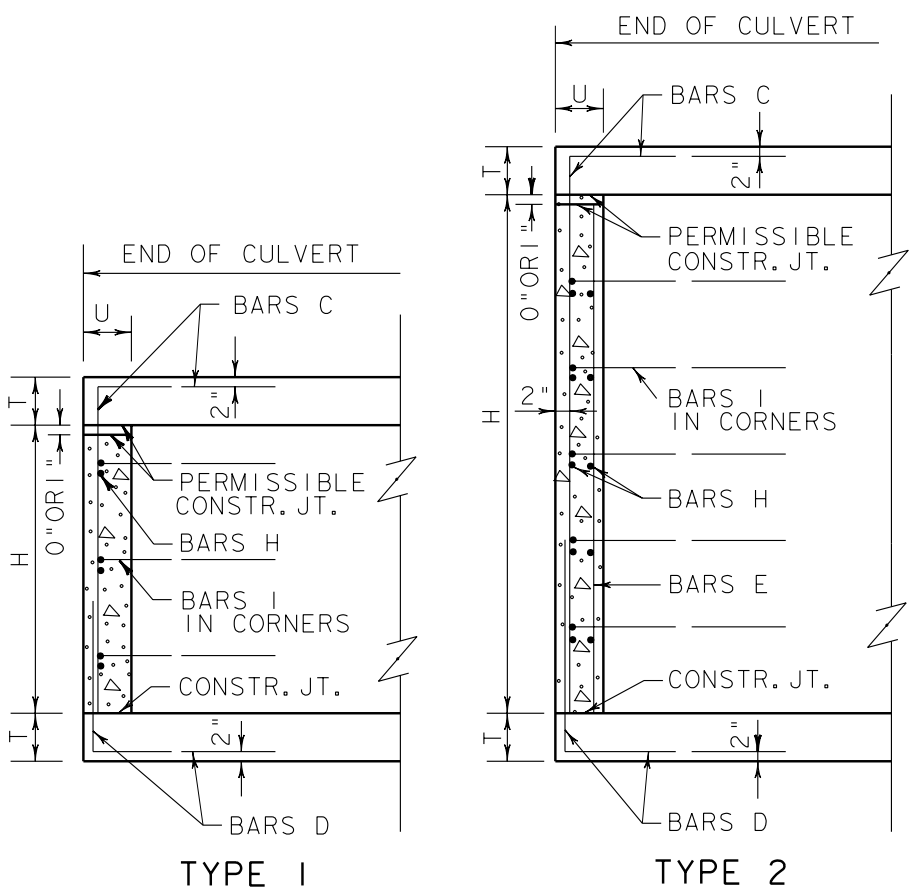
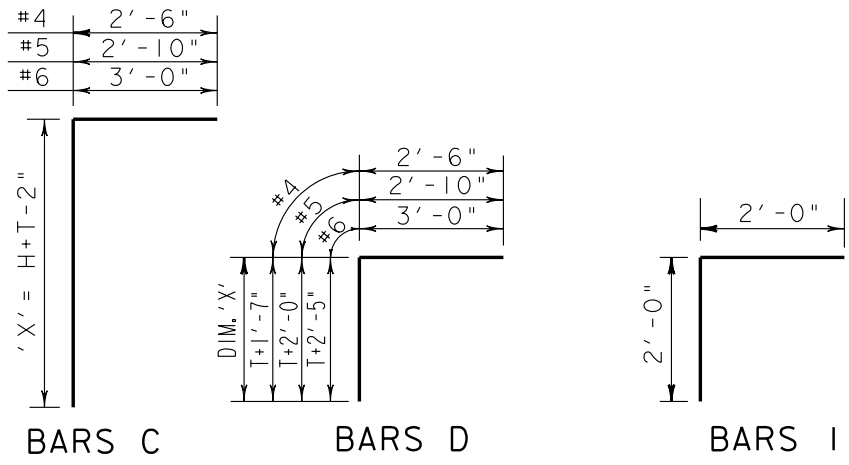


BILLS OF REINFORCING STEEL

CULVERT SIZE	TYPE SECTION	DIMENSIONS		MAX. FILL	TOTAL QUANTITIES		BARS C				BARS D				#4 BARS E @ 18"		#4 BARS H		#4 BARS I												
		S	H		T	U	C. Y. CONC.	LBS. REINF.	NO.	SIZE	SPA.	LENGTH	WEIGHT	DIM. 'X'	NO.	SIZE	SPA.	LENGTH	WEIGHT	DIM. 'X'	NO.	LENGTH	WEIGHT	NO.	SPA.	LENGTH	WEIGHT	NO.	LENGTH	SPA.	WEIGHT
		3 x 3	1		6'	6'	14'	0.11	41	4	#4	9"	4'-10"	13	2'-4"	4	#4	9"	4'-7"	12	2'-1"			2	10'	3'-9"	5	4	4'	10'	11



GENERAL NOTES:
 DESIGNED FOR HS20 LOADING AND MAXIMUM FILL HEIGHTS SHOWN.
 ALL DIMENSIONS RELATING TO REINFORCING STEEL ARE TO CENTERS OF BARS.
 REINFORCING BARS SHALL BE ADJUSTED TO PROVIDE A MINIMUM OF 1 1/4" INCHES CLEAR COVER.
 CONCRETE IS TO BE SAME CLASS AS USED IN CULVERT.
 END CAPS WILL NOT BE PAID FOR DIRECTLY BUT WILL BE SUBSIDIARY TO THE RELATED BID ITEMS.
 ALL REINFORCING STEEL SHALL BE GRADE 60.

CULVERT END CAP CEC (FW)

ORIGINAL - DEC. 92 - R. S. W.		FED. RD. DIV. NO.	FEDERAL AID PROJECT NO.	SHEET NO.
		6		
STATE	STATE DIST. NO.	COUNTY		
TEXAS	FORT WORTH			
CONT.	SECT.	JOB	HIGHWAY NO.	