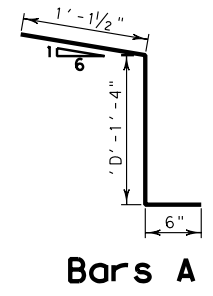
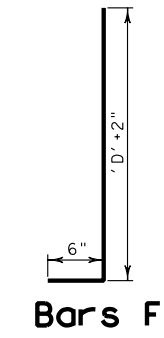


SECTION A-A



Bars A



Bars F

BILL OF REINFORCING STEEL & QUANTITIES

10' Channel Inlet D = 4.5'

Bars	A	B	C	D	E1	E2	F	G	H	K	-	-
Number	18	18	21	8	4	4	32	30	4	12	-	-
Size	#4	#4	#4	#4	#4	#4	#4	#4	#4	#4	-	-
Spacing	7.52"	7.52"	-	1.33'	-	-	7.52"	7.52"	-	1'	-	-
Length	4.8'	6.5'	10.6'	4'	2.3'	3.33'	5.17'	4.66'	14.7'	7.7'	-	-
Weight	57	77	150	22	7	9	110	95	40	62	-	-
Totals	Steel = 626 LBS.						Conc. = 4.97 C.Y.					

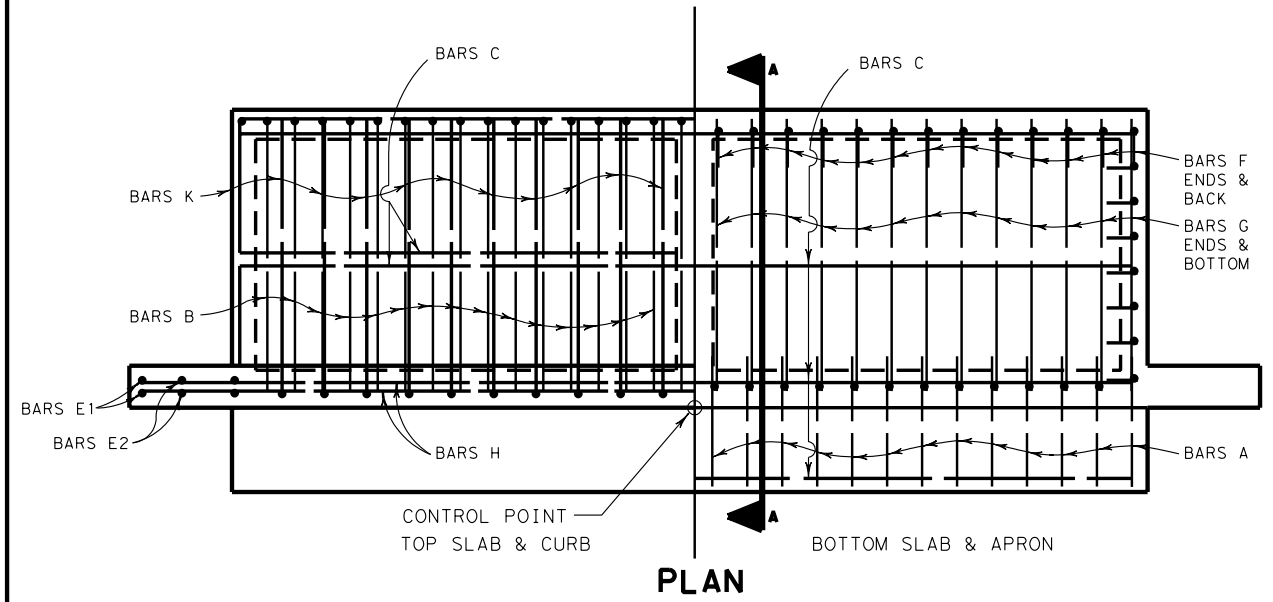
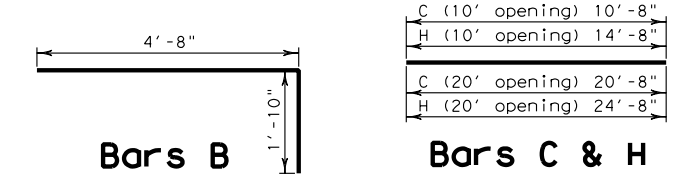
20' Channel Inlet D = 4.5'

Bars	A	B	C	D	E1	E2	F	G	H	K	M	N
Number	34	34	21	8	4	4	48	46	4	22	2	2
Size	#4	#4	#4	#4	#4	#4	#4	#4	#4	#4	#4	#4
Spacing	7.52"	7.52"	-	1.33'	-	-	7.52"	7.52"	-	1'	-	-
Length	4.8'	6.5'	20.6'	4'	2.3'	3.33'	5.17'	4.66'	24.6'	7.7'	5.33'	6.08'
Weight	108	148	291	22	7	9	165	143	66	112	7	9
Totals	Steel = 1087 LBS.						Conc. = 8.89 C.Y.					

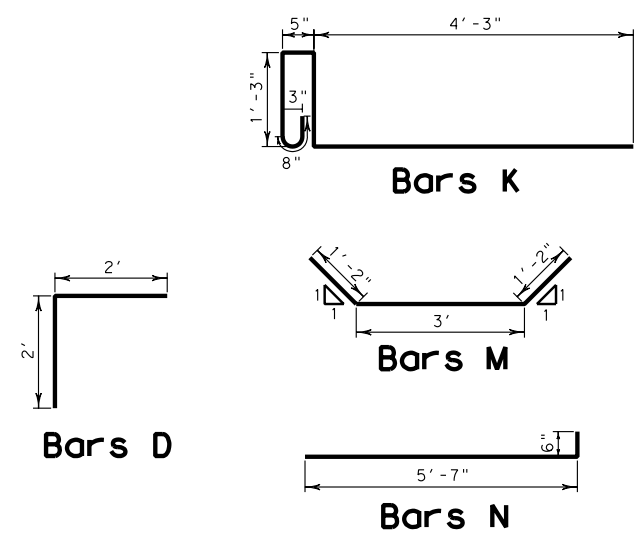
TOTAL AMOUNT OF CONCRETE & STEEL FOR ADDITIONAL DEPTHS

DEPTH	10' INLET		20' INLET	
	CONC. (CY)	STEEL (LBS)	CONC. (CY)	STEEL (LBS)
5'	5.26	644	9.27	1113
5.5'	5.56	681	9.74	1175
6'	5.85	721	10.2	1239
6.5'	6.12	758	10.66	1298

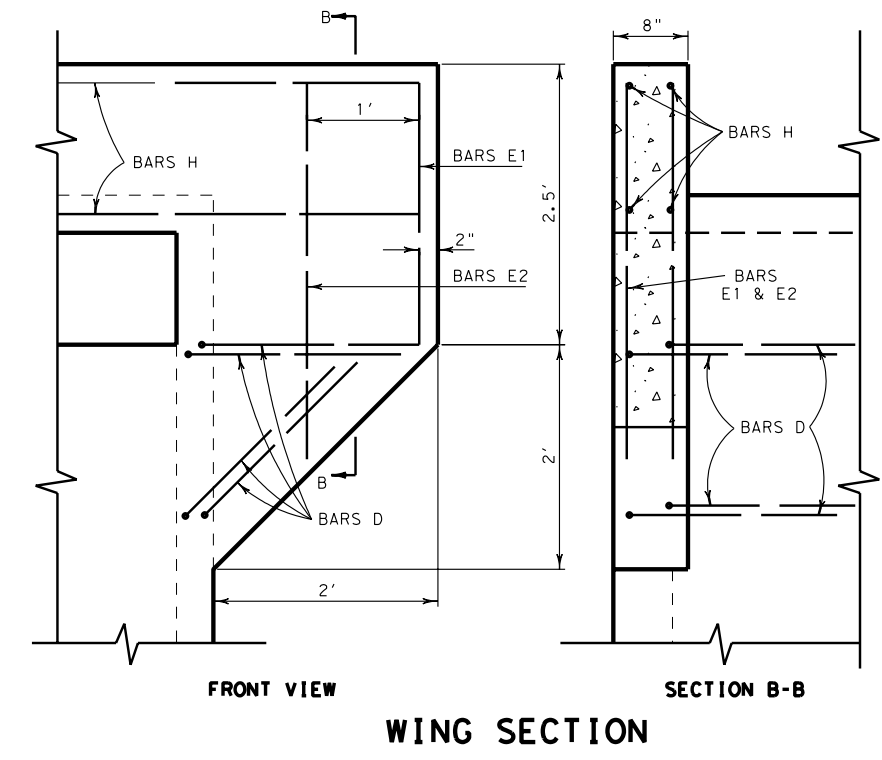
MAXIMUM DEPTH= 10'-0"



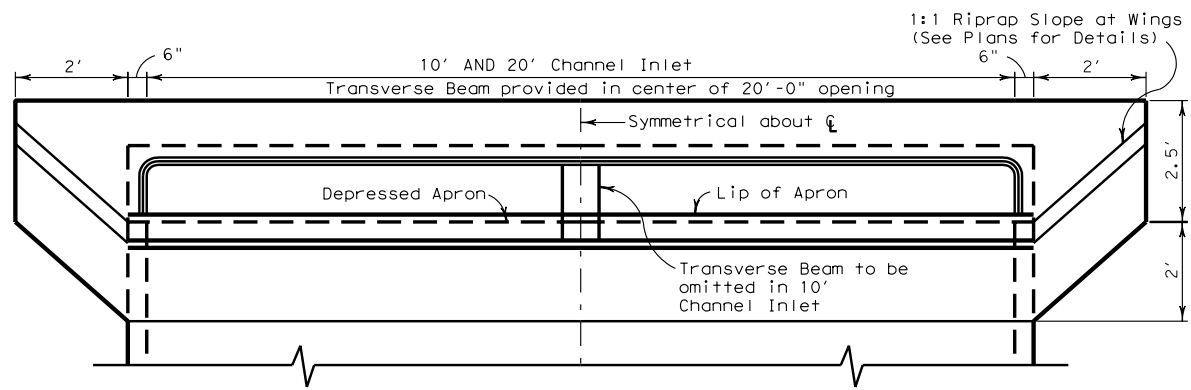
PLAN



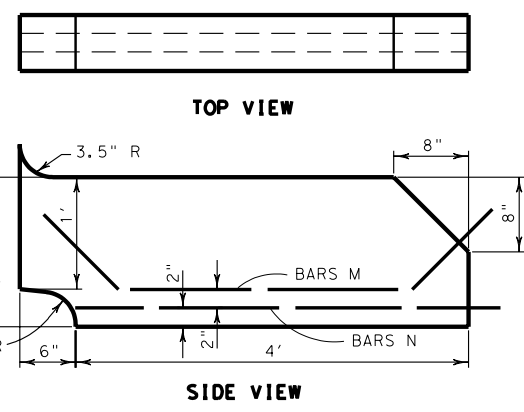
Bars K
Bars M
Bars D
Bars N



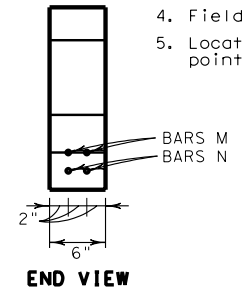
FRONT VIEW
SECTION B-B
WING SECTION



FRONT ELEVATION



TOP VIEW
SIDE VIEW
TRANSVERSE BEAM DETAIL



END VIEW

- General Notes
- All Concrete shall be Class "A".
 - Chamfer all exposed corners 3/4" except where otherwise noted.
 - Dimensions relating to reinforcing steel are to centers of bars.
 - Field cut and bend bars as necessary to accommodate pipe.
 - Location of inlet as shown in the plans refers to the control point shown on this sheet.

REVISIONS: ORIG DRAW DATE: AUG. 2002	DESIGN:	FED. REG.:	STATE:	PROJ. NO.:	HIGHWAY:
	CHECKED:	6	TEXAS		
	DRAWN:	DISTRICT:	COUNTY:	CONTROL SECTION:	JOB SHEET:
	CHECKED:	FTW			

Texas Department of Transportation
 FORT WORTH DISTRICT
 © 2002 by Texas Department of Transportation; All Rights Reserved.
 CHANNEL HEADWALL
 INLET
 CHI-02 (FW)

\public\standard\chi-02fw.dgn