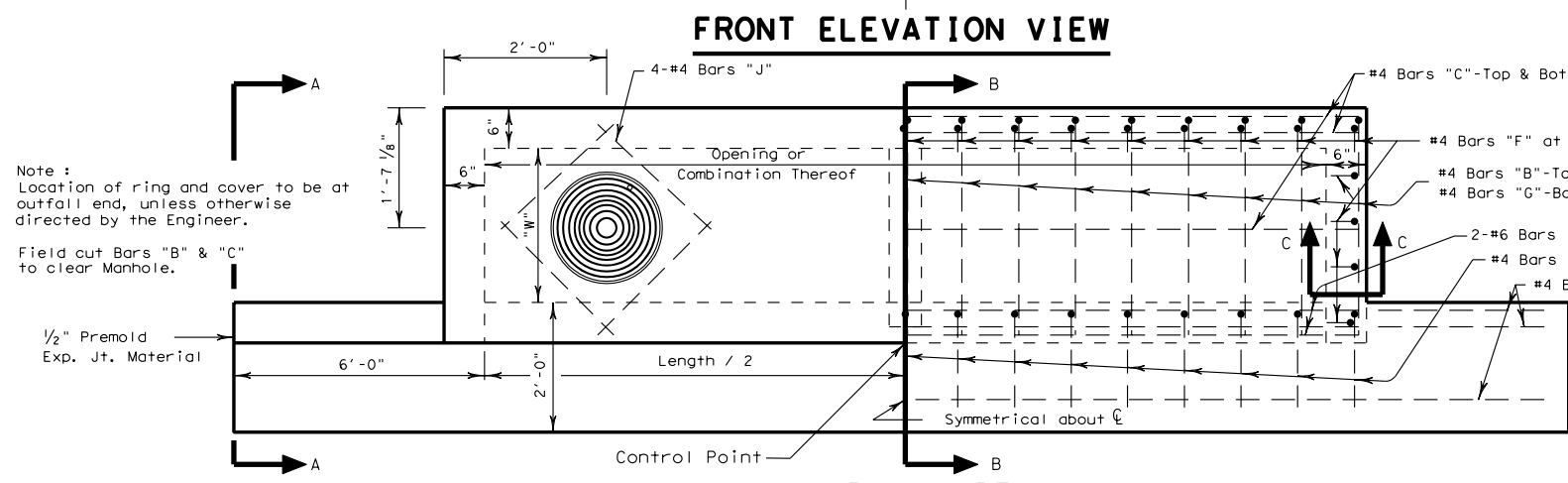
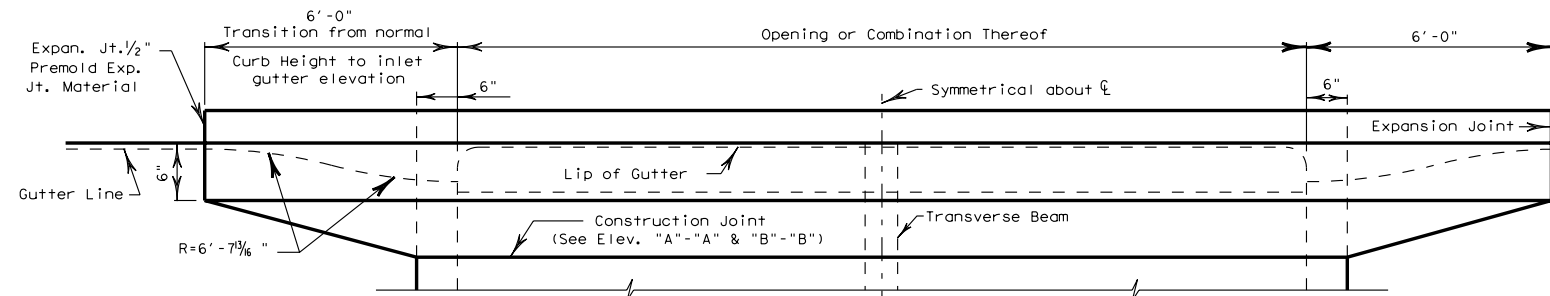


BILL OF REINFORCING STEEL

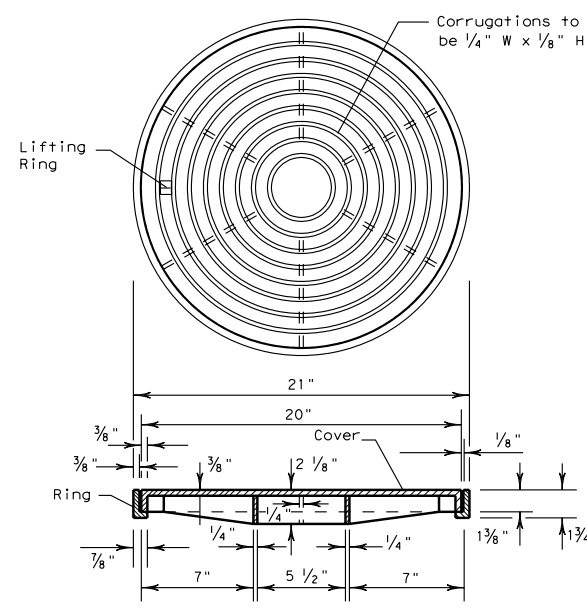
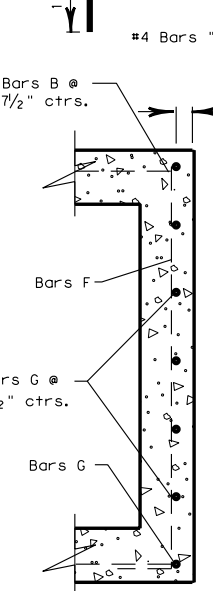
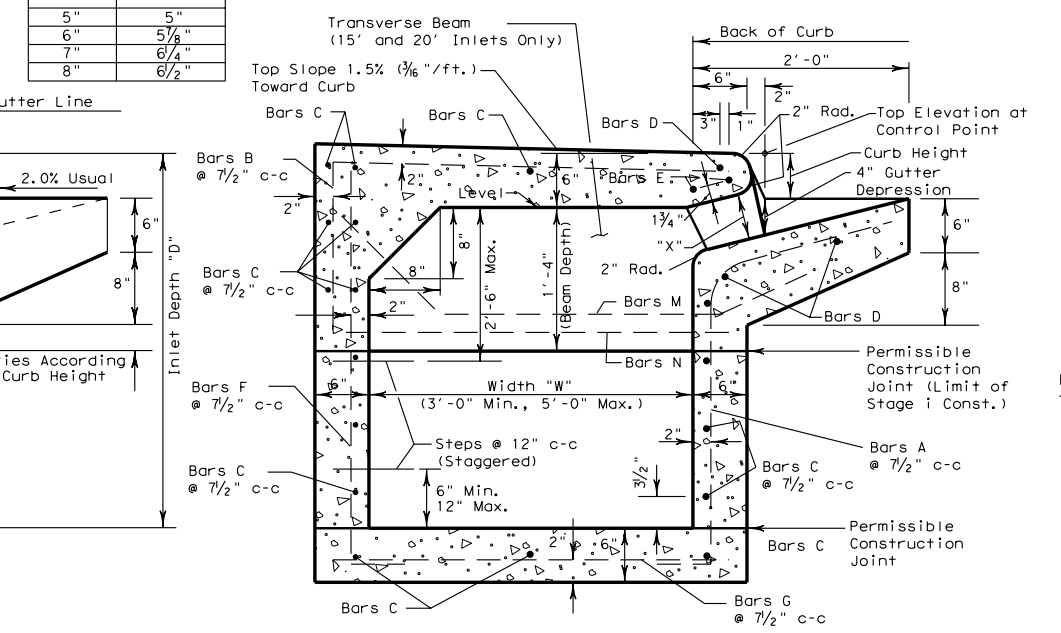
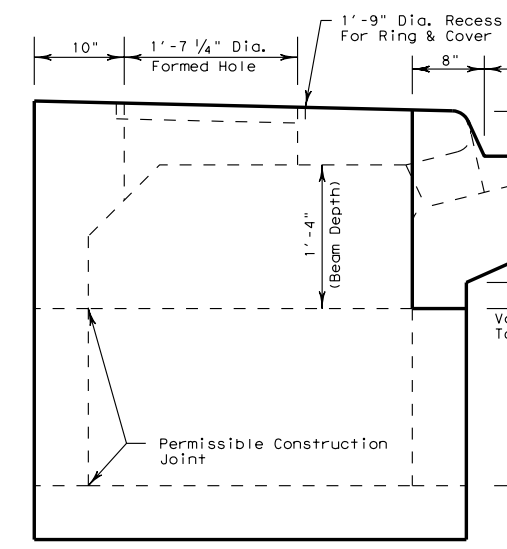
Depth "D"	Opening Length "L" = 5 ft										Opening Length "L" = 10 ft										Opening Length "L" = 15 ft										Opening Length "L" = 20 ft										Steps
	All Widths and Lengths					Widths "W"					Widths "W"					Widths "W"					Widths "W"																				
	C	D	E	J	Other	3ft	4ft	5ft	Other	Other	3ft	4ft	5ft	Other	Other	3ft	4ft	5ft	Other	Other	3ft	4ft	5ft	Other	Other	3ft	4ft	5ft	Other	Other											
3'-6"	17	3	2	4	20	24	28	10	10	20	28	32	36	18	18	28	36	40	44	26	26	36	2	2	44	48	52	34	34	44	2	2	1								
3'-9"	18	3	2	4	20	24	28	10	10	20	28	32	36	18	18	28	36	40	44	26	26	36	2	2	44	48	52	34	34	44	2	2	1								
4'-0"	19	3	2	4	20	24	28	10	10	20	28	32	36	18	18	28	36	40	44	26	26	36	2	2	44	48	52	34	34	44	2	2	1								
4'-3"	19	3	2	4	20	24	28	10	10	20	28	32	36	18	18	28	36	40	44	26	26	36	2	2	44	48	52	34	34	44	2	2	1								
4'-6"	21	3	2	4	20	24	28	10	10	20	28	32	36	18	18	28	36	40	44	26	26	36	2	2	44	48	52	34	34	44	2	2	1								
4'-9"	21	3	2	4	20	24	28	10	10	20	28	32	36	18	18	28	36	40	44	26	26	36	2	2	44	48	52	34	34	44	2	2	1								
5'-0"	21	3	2	4	20	24	28	10	10	20	28	32	36	18	18	28	36	40	44	26	26	36	2	2	44	48	52	34	34	44	2	2	1								
5'-3"	23	3	2	4	20	24	28	10	10	20	28	32	36	18	18	28	36	40	44	26	26	36	2	2	44	48	52	34	34	44	2	2	1								
5'-6"	23	3	2	4	20	24	28	10	10	20	28	32	36	18	18	28	36	40	44	26	26	36	2	2	44	48	52	34	34	44	2	2	1								
5'-9"	25	3	2	4	20	24	28	10	10	20	28	32	36	18	18	28	36	40	44	26	26	36	2	2	44	48	52	34	34	44	2	2	1								
6'-0"	25	3	2	4	20	24	28	10	10	20	28	32	36	18	18	28	36	40	44	26	26	36	2	2	44	48	52	34	34	44	2	2	1								
7'-0"	29	3	2	4	20	24	28	10	10	20	28	32	36	18	18	28	36	40	44	26	26	36	2	2	44	48	52	34	34	44	2	2	1								
8'-0"	31	3	2	4	20	24	28	10	10	20	28	32	36	18	18	28	36	40	44	26	26	36	2	2	44	48	52	34	34	44	2	2	1								
9'-0"	35	3	2	4	20	24	28	10	10	20	28	32	36	18	18	28	36	40	44	26	26	36	2	2	44	48	52	34	34	44	2	2	1								
10'-0"	38	3	2	4	20	24	28	10	10	20	28	32	36	18	18	28	36	40	44	26	26	36	2	2	44	48	52	34	34	44	2	2	1								

SUMMARY OF QUANTITIES FOR STREET INLETS

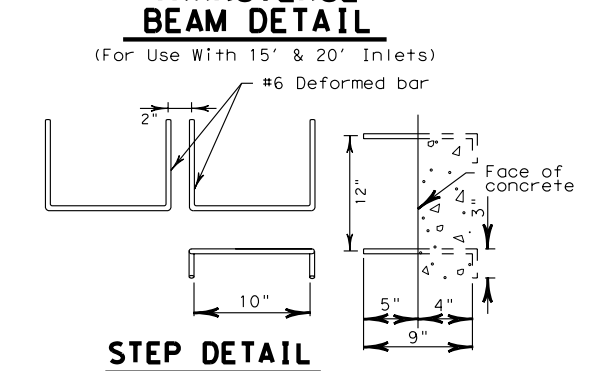
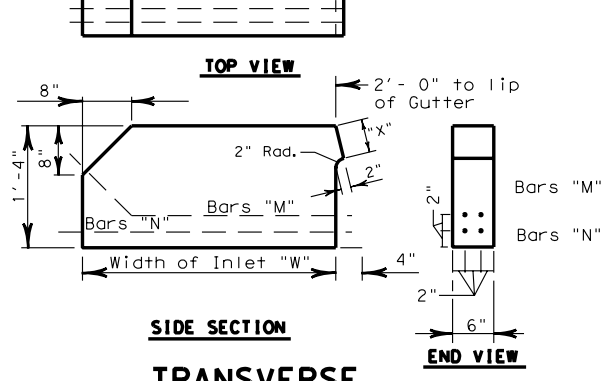
Depth "D"	5'-0" Opening "L"					10'-0" Opening "L"					15'-0" Opening "L"					20'-0" Opening "L"						
	Width 3'-0"		Width 4'-0"		Width 5'-0"	Width 3'-0"		Width 4'-0"		Width 5'-0"	Width 3'-0"		Width 4'-0"		Width 5'-0"	Width 3'-0"		Width 4'-0"		Width 5'-0"		
	Conc. C.Y.	Steel Lbs.	Conc. C.Y.	Steel Lbs.	Conc. C.Y.	Steel Lbs.	Conc. C.Y.	Steel Lbs.	Conc. C.Y.	Steel Lbs.	Conc. C.Y.	Steel Lbs.	Conc. C.Y.	Steel Lbs.	Conc. C.Y.	Steel Lbs.	Conc. C.Y.	Steel Lbs.	Conc. C.Y.	Steel Lbs.	Conc. C.Y.	Steel Lbs.
3'-6"	2.62	306	2.95	332	3.28	373	4.12	479	4.64	521	5.20	564	5.87	667	6.40	721	7.10	775	7.20	846	8.11	909
3'-9"	2.70	309	3.04	341	3.39	373	4.25	494	4.78	536	5.34	579	5.87	687	6.58	741	7.30	796	7.42	874	8.34	937
4'-0"	2.78	328	3.14	364	3.49	399	4.38	518	4.92	565	5.49	610	6.05	718	6.77	776	7.49	835	7.64	909	8.58	976
4'-3"	2.87	334	3.23	370	3.59	406	4.51	526	5.06	573	5.64	619	6.22	729	6.95	787	7.69	847	7.87	922	8.81	990
4'-6"	2.95	356	3.32	394	3.69	431	4.64	558	5.20	607	5.79	656	6.40	770	7.14	830	7.88	891	8.09	973	9.04	1043
4'-9"	3.03	361	3.41	410	3.79	438	4.77	566	5.34	616	5.94	665	6.57	780	7.32	841	8.07	903	8.31	986	9.27	1056
5'-0"	3.12	367	3.51	416	3.90	445	4.90	574	5.47	624	6.09	674	6.75	791	7.51	853	8.27	915	8.53	999	9.50	1070
5'-3"	3.20	383	3.60	424	4.00	465	5.03	600	5.61	652	6.23	704	6.93	827	7.69	890	8.46	955	8.76	1044	9.73	1118
5'-6"	3.28	389	3.69	430	4.10	472	5.16	608	5.75	661	6.38	713	7.11	837	7.88	901	8.66	967	8.98	1057	9.97	1131
5'-9"	3.37	405	3.78	451	4.20	495	5.29	635	5.89	690	6.53	744	7.28	874	8.07	940	8.85	1007	9.20	1102	10.20	1178
6'-0"	3.45	415	3.88	460	4.30	504	5.42	646	6.03	702	6.68	757	7.45	888	8.25	954	9.05	1022	9.42	1119	10.43	1276
7'-0"	3.78	460	4.25	510	4.71	560	5.94	716	6.59	777	7.27	837	8.16	981	8.99	1053	9.82	1126	10.31	1237	11.35	1319
8'-0"	4.12	496	4.62	550	5.12	604	6.46	770	7.14	834	7.86	899	8.86	1051	9.73	1129	10.60	1205	11.20	1325	12.28	1412
9'-0"	4.45	545	4.99	605	5.53	664	6.97	842	7.70	912	8.46	982	9.56	1148	10.47	1231	11.38	1313	12.09	1447	13.21	1539
10'-0"	4.78	582	5.36	645	5.93	708	7.49	900	8.11	974	9.05	1048	10.27	1227	11.21	1312	12.16	1399	12.98	1546	14.13	1642



THROAT DIMENSION	
CURB HEIGHT	"X"
5"	5"
6"	5 7/8"
7"	6 3/4"
8"	6 1/2"



CONCRETE QUANTITY REDUCTION TABLE	
Pipe Diameter	Reduction One Pipe C.U. Yd.
15"	0.04
18"	0.05
21"	0.08
24"	0.09
27"	0.11
30"	0.14
33"	0.17
36"	0.20
39"	0.23
42"	0.26
45"	0.30
48"	0.35



- GENERAL NOTES**
- All concrete shall be Class "A".
  - Chamfer all exposed corners 3/4" except where otherwise noted.
  - Dimensions related to reinforcing steel are to the centers of bars.
  - Field cut and bend bars as necessary to accommodate storm drain pipe.
  - Cast iron ring and cover shall conform to Item 471.
  - Depths other than those shown may be used whenever necessary, up to a maximum of 10'. Quantities for other depths limits may be found by interpolation.
  - During Stage 1 construction, inlets will not be constructed above subgrade elevation unless permission is granted by the Engineer.
  - A temporary wood cover shall be installed after Stage 1 is completed, and will remain in place until Stage 2 begins.
  - The location of inlet as shown in the plans refers to the control point at the face of curb and mid-point of the inlet.
  - A sealed 1/2" expansion joint shall be placed along all vertical faces abutting concrete pavement. Class 3, 4, 5 or 7 joint sealant shall be used to seal joint.

Texas Department of Transportation  
**FORT WORTH DISTRICT**  
 TYPE 1  
**CURB INLET**  
 FOR USE W/ 5" TO 8" BARRIER CURB  
 5', 10', 15' & 20' OPENINGS  
 3'-6" TO 10'-0" DEPTHS &  
 3', 4' & 5' WIDTHS  
**CI (1) - 02 (FW)**

FED. RD. DIV. NO.	PROJECT NO.	SHEET NO.
6		
STATE	DIST.	COUNTY
TEXAS	FTW	
CONT.	SECT.	JOB HIGHWAY NO.

Original Aug. 2002  
 © 2002 by Texas Department of Transportation; all rights reserved

DISCLAIMER: The use of this standard is governed by the "Texas Engineering Practice Act". No warranty of any kind is made by TxDOT for any purpose whatsoever. TxDOT assumes no responsibility for the conversion of this standard to other formats or for incorrect results or damages resulting from its use.

LEVELS DISPLAYED

1	2	3	4	5
6	7	8	9	10
11	12	13	14	15
16	17	18	19	20
21	22	23	24	25
26	27	28	29	30
31	32	33	34	35
36	37	38	39	40
41	42	43	44	45
46	47	48	49	50

http://www.dot.state.tx.us/ftw/spec/info/standard.htm ci102fw.dgn