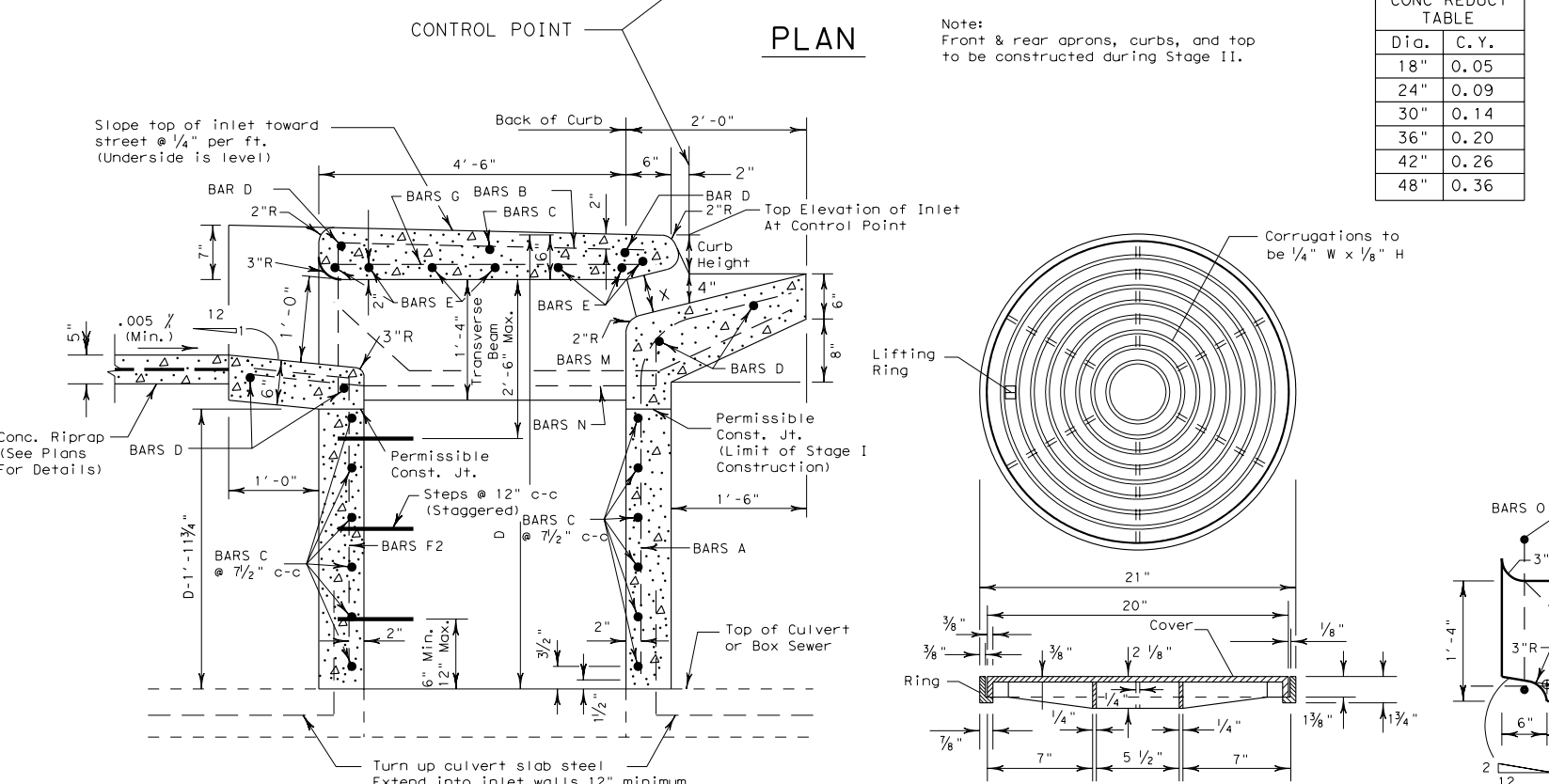
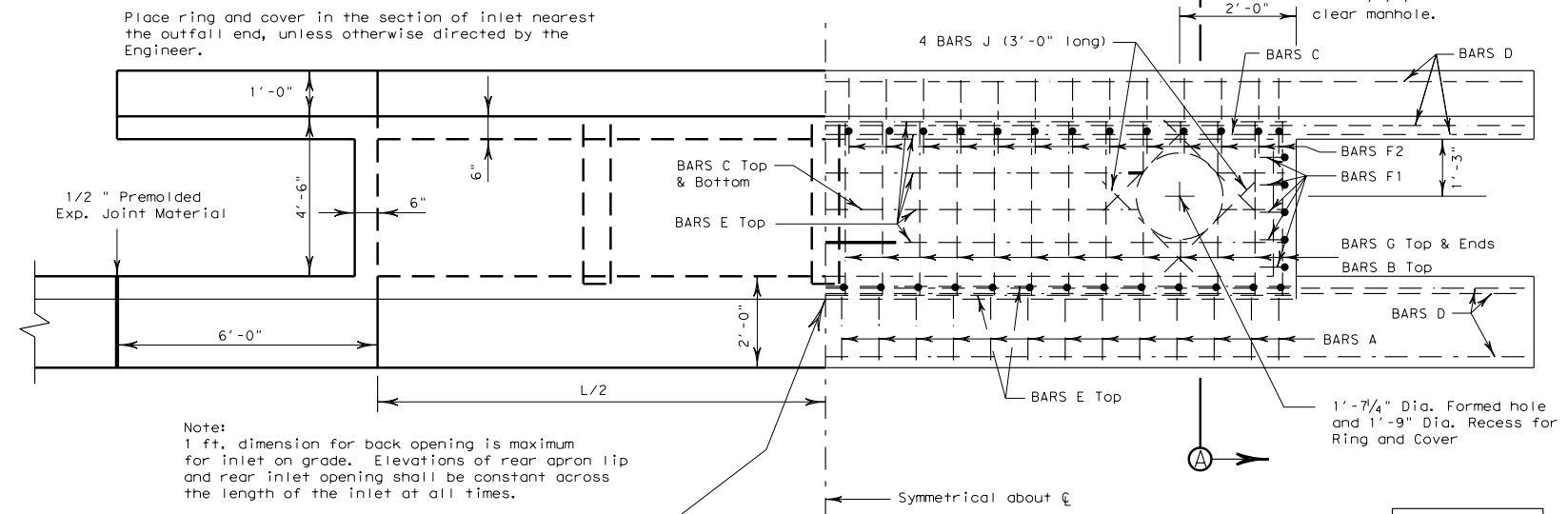
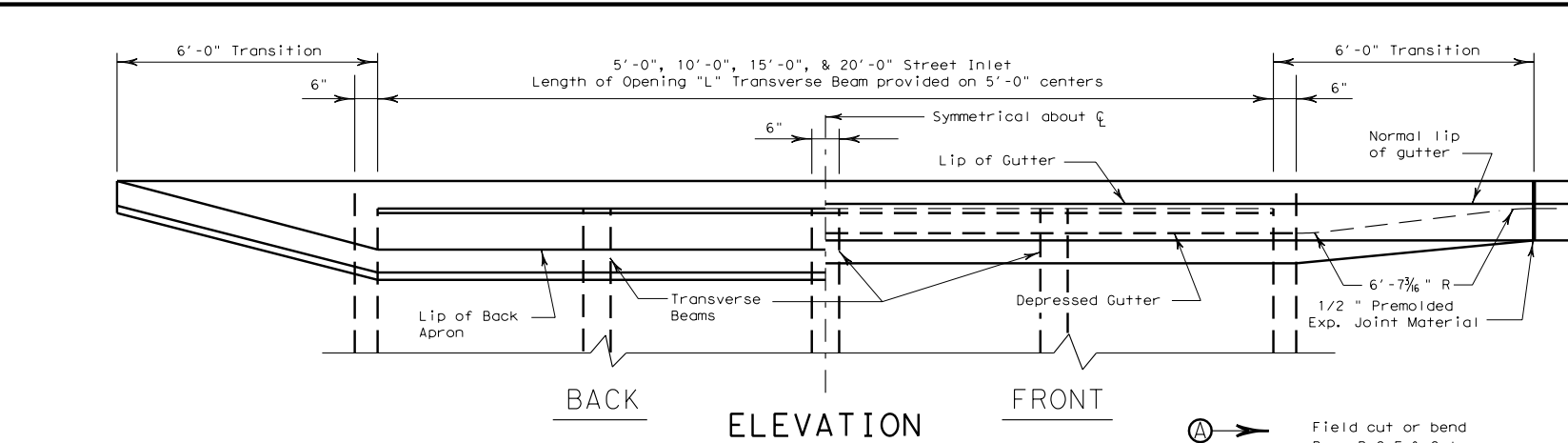


DISCLAIMER: The use of this standard is governed by the "Texas Engineering Practice Act". No warranty of any kind is made by TxDOT for any purpose whatsoever. TxDOT assumes no responsibility for the conversion of this standard to other formats or for incorrect results or damages resulting from its use.

http://www.dot.state.tx.us/ftw/spec/info/standard.htm c:\30b02b\cfw.dgn

LEVELS DISPLAYED

1



FRONT THROAT DIMENSION X	
CURB HEIGHT	X
5"	5"
6"	5 7/8"
7"	6 1/4"
8"	6 1/2"

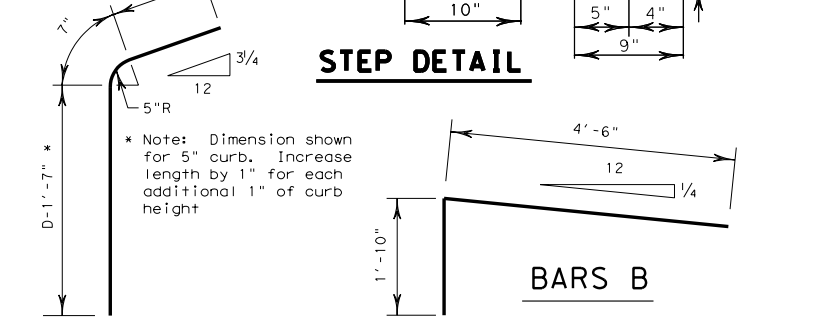
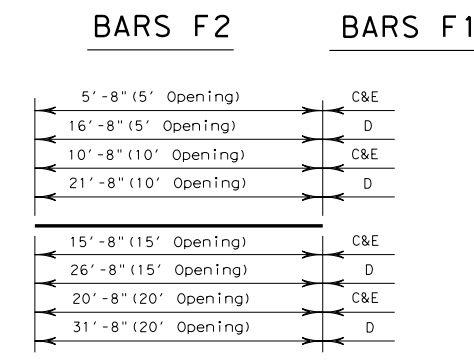
20' Street Inlet 'D'=4.00' (Includes 3 Transverse Beams)														
Bars	M	N	O	A*	B	C	D	E	F1*	F2*	G	J		
Number	6	6	15	34	34	9	6	7	16	34	46	4		
Size	#4	#4	#4	#4	#4	#4	#6	#6	#4	#4	#4	#4		
Spacing	—	—	12"	7 1/2"	7 1/2"	—	—	—	7 1/2"	7 1/2"	7 1/2"	—		
Length	5'-11"	6'-3"	4'-5"	4'-5"	6'-4"	20'-8"	31'-8"	20'-8"	3'-9"	3'-5"	4'-8"	3'-0"		
Weight	24	25	44	100	144	124	127	217	40	79	143	8		
Totals				Steel=1075 Lbs.				Conc.=7.31 C.Y.						

15' Street Inlet 'D'=4.00' (Includes 2 Transverse Beams)														
Bars	M	N	O	A*	B	C	D	E	F1*	F2*	G	J		
Number	4	4	10	26	26	9	6	7	16	26	38	4		
Size	#4	#4	#4	#4	#4	#4	#4	#6	#4	#4	#4	#4		
Spacing	—	—	12"	7 1/2"	7 1/2"	—	—	—	7 1/2"	7 1/2"	7 1/2"	—		
Length	5'-11"	6'-3"	4'-5"	4'-5"	6'-4"	15'-8"	26'-8"	15'-8"	3'-9"	3'-5"	4'-8"	3'-0"		
Weight	16	17	30	77	110	94	107	165	40	61	119	8		
Totals				Steel=844 Lbs.				Conc.=5.92 C.Y.						

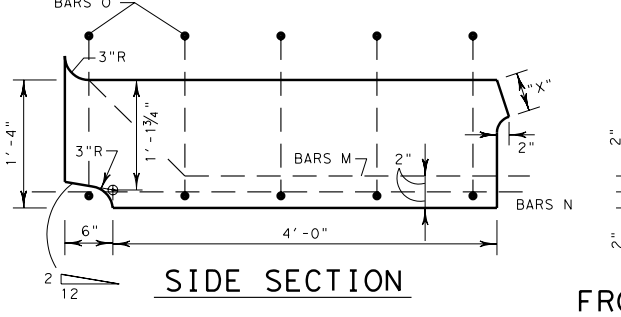
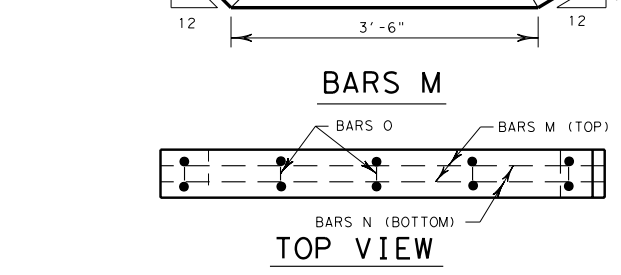
10' Street Inlet 'D'=4.00' (Includes 1 Transverse Beam)														
Bars	M	N	O	A*	B	C	D	E	F1*	F2*	G	J		
Number	2	2	5	18	18	9	6	7	16	18	30	4		
Size	#4	#4	#4	#4	#4	#4	#4	#6	#4	#4	#4	#4		
Spacing	—	—	12"	7 1/2"	7 1/2"	—	—	—	7 1/2"	7 1/2"	7 1/2"	—		
Length	5'-11"	6'-3"	4'-5"	4'-5"	6'-4"	10'-8"	21'-8"	10'-8"	3'-9"	3'-5"	4'-8"	3'-0"		
Weight	8	8	15	53	76	64	87	112	40	42	94	8		
Totals				Steel=607 Lbs.				Conc.=4.58 C.Y.						

5' Street Inlet 'D'=4.00'														
Bars	A*	B	C	D	E	F1*	F2*	G	J					
Number	10	10	9	6	7	16	10	25	4					
Size	#4	#4	#4	#4	#6	#4	#4	#4	#4					
Spacing	7 1/2"	7 1/2"	—	Shown	—	7 1/2"	7 1/2"	7 1/2"	—					
Length	4'-5"	6'-4"	5'-8"	16'-8"	5'-8"	3'-9"	3'-5"	4'-8"	3'-0"					
Weight	30	42	34	67	60	40	23	90	8					
Totals				Steel=394 Lbs.				Conc.=3.19 C.Y.						

Note: Maximum Depth of Inlet Shall be 10'.



- GENERAL NOTES**
- All concrete shall be Class "A".
 - Chamfer all exposed corners 3/4" except where otherwise noted.
 - Dimensions related to reinforcing steel are to the centers of bars.
 - Field cut and bend bars as necessary to accommodate storm drain pipe.
 - Cast iron ring and cover shall conform to Item 471.
 - During Stage I construction, inlets will not be constructed above subgrade elevation unless permission is granted by the Engineer.
 - A temporary wood cover shall be installed after Stage I is completed, and will remain in place until Stage 2 begins.
 - The location of inlet as shown in the plans refers to the control point at the face of curb and mid-point of the inlet.
 - A sealed 1/2" expansion joint shall be placed along all vertical faces abutting concrete pavement. Class 3, 4, 5, or 7 joint sealant shall be used to seal joint.



Texas Department of Transportation

FORT WORTH DISTRICT

TYPE 3-C CURB INLET

12" OPEN BACK INLET ON BOX CULVERT FOR USE W/ 5" TO 8" BARRIER CURB 5', 10', 15' & 20' OPENINGS

CI (3) (OB) -02-BC (FW)

FED. RD. DIV. NO.	PROJECT NO.	SHEET NO.
6		
STATE	DIST.	COUNTY
TEXAS	FTW	
CONT.	SECT.	JOB
		HIGHWAY NO.

New August 2002

© 2002 by Texas Department of Transportation; all rights reserved