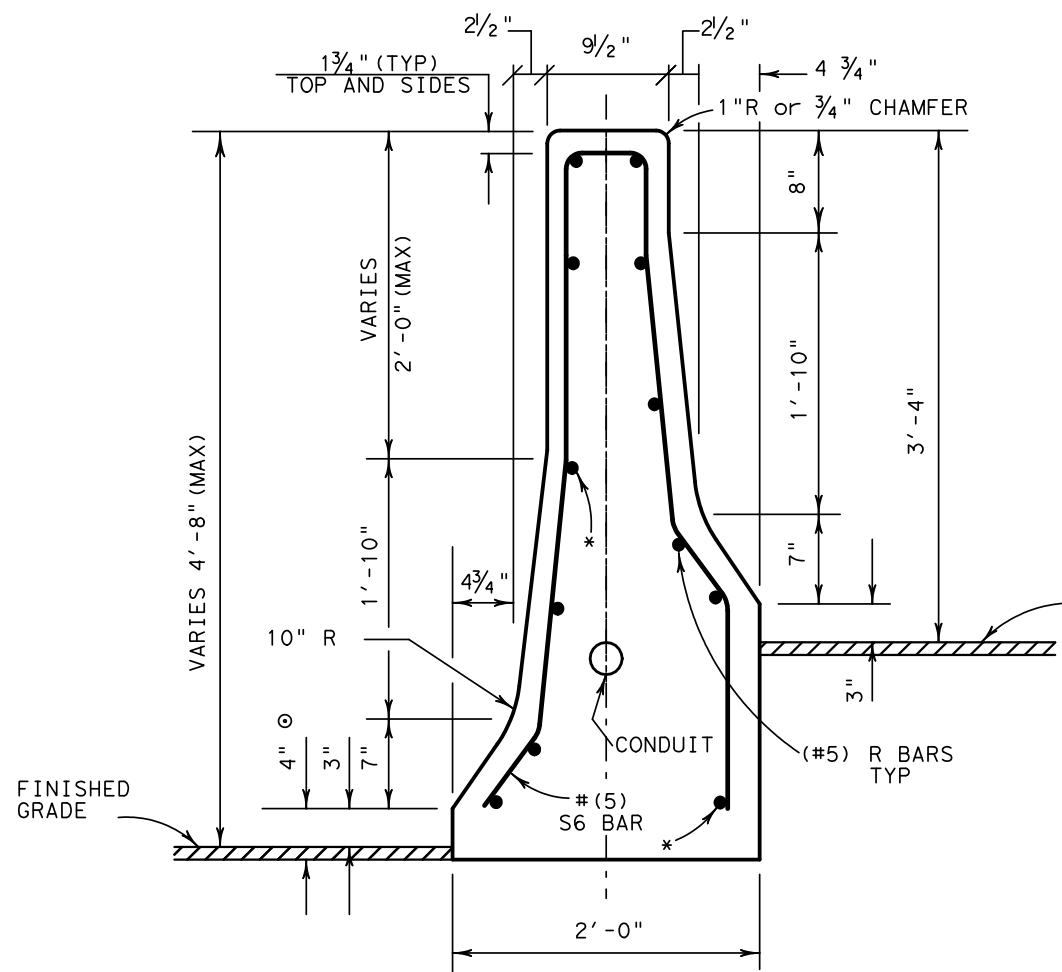


DISCLAIMER: The use of this standard is governed by the "Texas Engineering Practice Act". No warranty of any kind is made by TxDOT for any purpose whatsoever. TxDOT assumes no responsibility for the conversion of this standard to other formats or for incorrect results or damages resulting from its use.

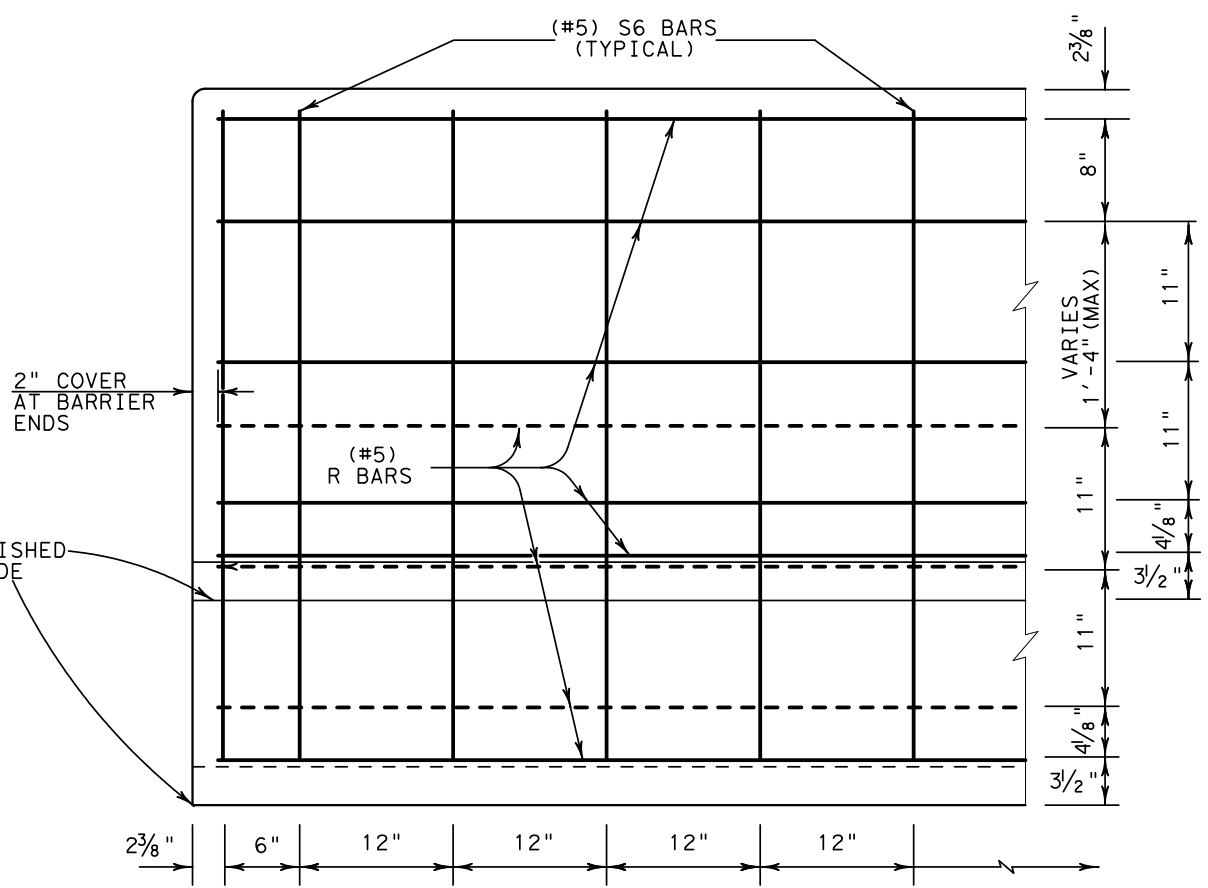
http://www.dot.state.tx.us/ftw/specinfo/standard.htm/csb1006fw.dgn



NOTE: WHEN ACP IS NOT USED FOR LATERAL SUPPORT, THESE DIMENSIONS SHALL BE ADJUSTED ACCORDINGLY.

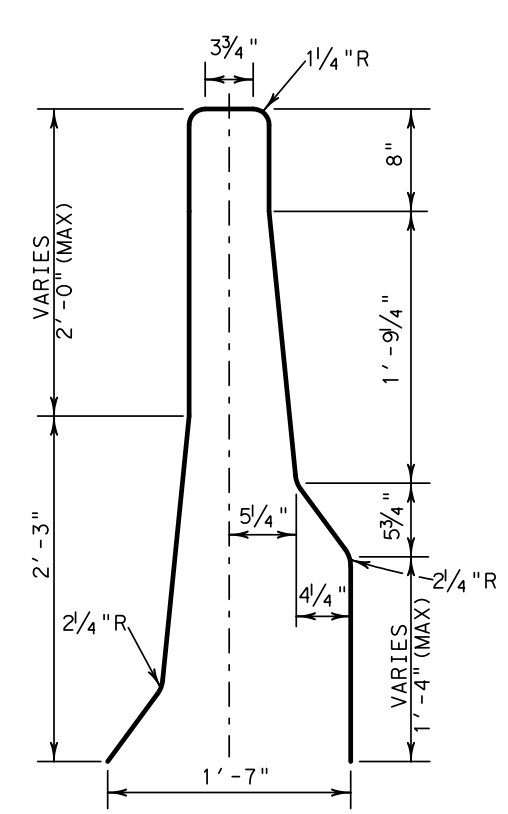
NOTE: THESE BARS MAY BE OMITTED WHERE DIFFERENCE IN FINISHED GRADES IS .5' OR LESS.

**CONCRETE SAFETY BARRIER (F-SHAPE)  
FW-TYPE 5 CAST-IN-PLACE**



**REINFORCEMENT FOR CAST-IN-PLACE  
CONCRETE SAFETY BARRIER (FW-TYPE 5)**

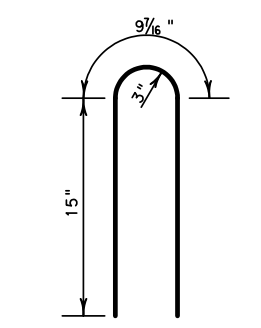
SHOWING REINFORCEMENT FOR CSB. EXPANSION JOINTS TO BE PLACED EVERY 100 FT. OR LESS.



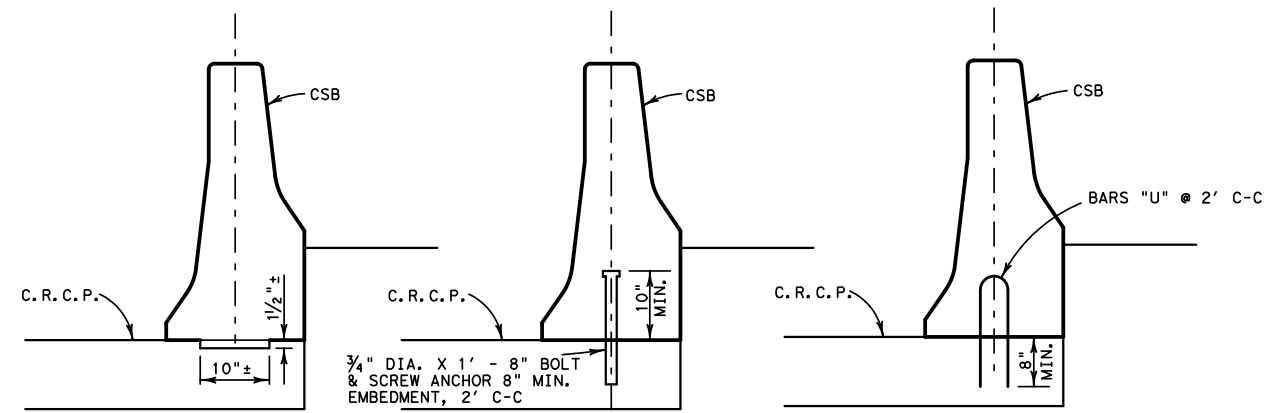
**S6 BAR**

**GENERAL NOTES**

- AXIS OF SAFETY BARRIER SHALL BE VERTICAL.
- BID PRICE PER LINEAR FOOT OF CSB FW-TY 5, INCLUDING TERMINAL AND ANCHOR SECTIONS SHALL INCLUDE ALL OF THE CONCRETE, REINFORCEMENT, AND DRILLED SHAFT FOUNDATIONS.
- ALL CONCRETE FOR CSB FW-TY 5, INCLUDING DRILLED SHAFT FOUNDATIONS SHALL BE CLASS "A" OR CLASS "C".
- LONGITUDINAL BARS FOR ROADWAY BARRIER SHALL CONFORM TO ASTM A-615 OR ASTM A-616 (GRADE 60).
- AT CONSTRUCTION JOINTS FOR THE ROADWAY BARRIER, THE LONGITUDINAL BARS SHALL EXTEND BEYOND THE JOINT SO THAT BAR SPLICES WILL BE A MINIMUM OF TWO FEET FROM THE CONSTRUCTION JOINT.
- BAR SPLICES FOR ROADWAY BARRIER SHALL BE A MINIMUM OF 24 TIMES THE NOMINAL DIAMETER OF THE BAR.
- ANY METHOD DEvised BY THE CONTRACTOR AND APPROVED BY THE ENGINEER THAT WILL ASSURE THE LONGITUDINAL ROADWAY STEEL FOR CSB FW-TY 5 WILL BE POSITIONED ± 1/2 INCH AS DIMENSIONED WILL BE SATISFACTORY.
- CONDUIT TO BE PROVIDED ONLY WHEN CALLED FOR ELSEWHERE IN THE PLANS. POSITION OF CONDUIT MAY BE ADJUSTED TO FACILITATE CONSTRUCTION SUBJECT TO APPROVAL OF THE ENGINEER.
- CONDUITS SHALL BE 2" DIA. (PVC OR HDPE) FOR ROADWAY LIGHTING CIRCUITS OR 1" DIA. (RM) FOR SIGN LIGHTING CIRCUITS.
- FOR DETAILS OF DRILLED SHAFT FOUNDATION SEE CSB(6) (FW).
- FW-TYPE 5 CSB SHALL BE USED IN CONJUNCTION WITH STATEWIDE STANDARD CSB, TY.1, 2 OR 3.



**BARS "U" (#6)**



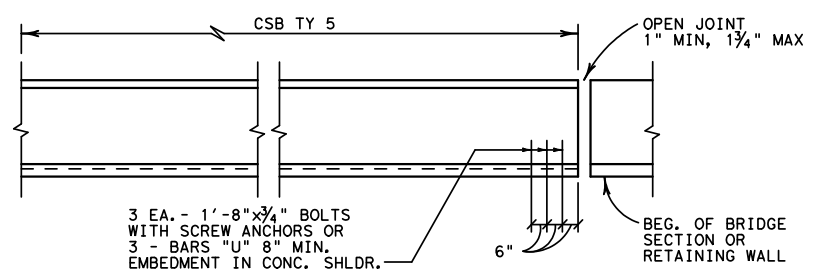
OPTION NO. 1 KEYWAY

OPTION NO. 2

OPTION NO. 3

**CONCRETE SAFETY BARRIER (FW-TY 5)**

ANCHORAGE ON CONCRETE SHOULDER



**ANCHOR OR TERMINAL ELEVATION**

(TO BE USED AT THE BEG. AND END ALL OPEN JOINTS)

LEVELS DISPLAYED
1

REVISIONS:		Texas Department of Transportation					
		<b>CONCRETE SAFETY BARRIER (F-SHAPE) (FW-TYPE 5)</b>					
		CAST-IN-PLACE					
		CSB (10)-06(FW)					
ORIG. DRAW DATE:	DESIGN:	FED. REG.	STATE	FEDERAL AID PROJ. NO.	HIGHWAY		
Apr 2006	CHECKED:	6	TEXAS				
	DRAWN:	DISTRICT	COUNTY	CONTROL	SECTION	JOB SHEET	
	CHECKED:	FTW					