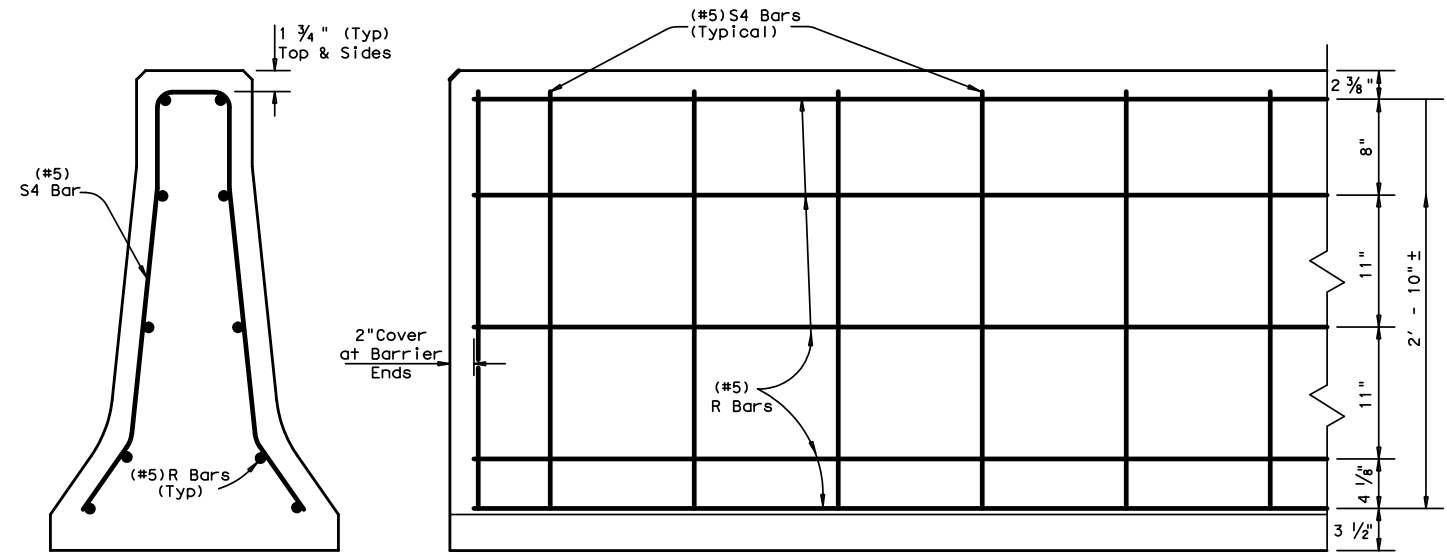
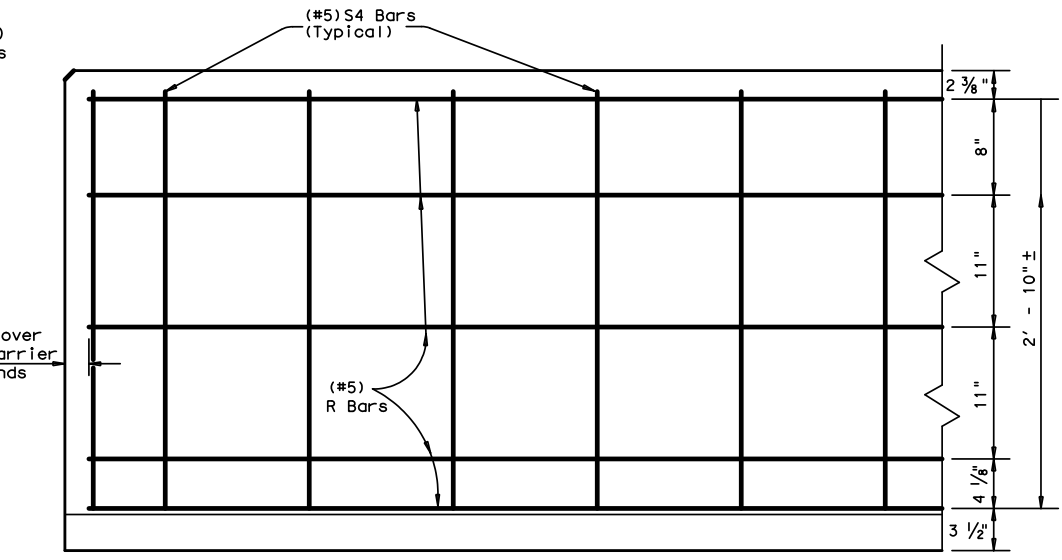


DISCLAIMER: The use of this standard is governed by the "Texas Engineering Practice Act". No warranty of any kind is made by TxDOT for any purpose whatsoever. TxDOT assumes no responsibility for the conversion of this standard to other formats or for incorrect results or damages resulting from its use.

http://www.dot.state.tx.us/ftw/spec/info/standard.htm/csb104fw.dgn

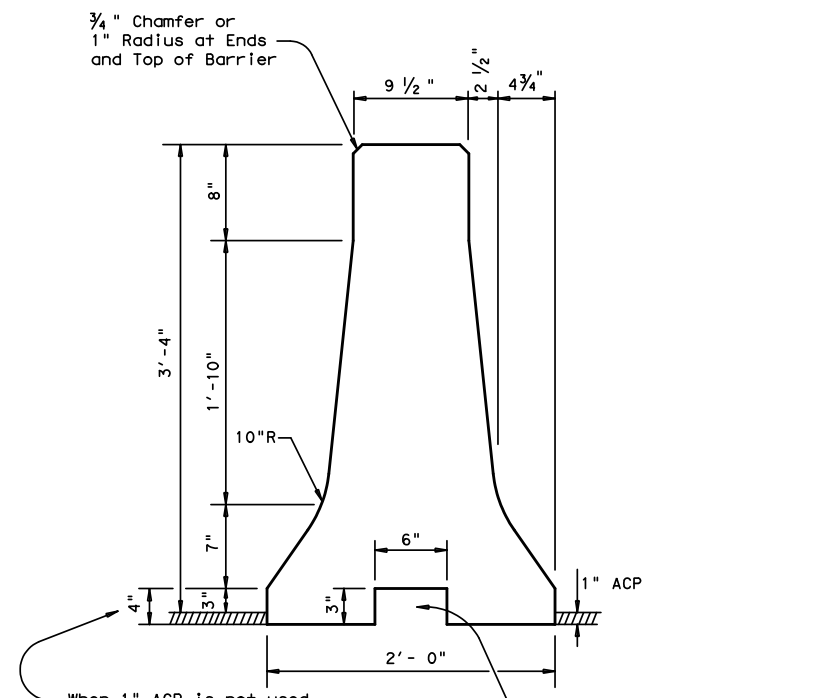


Cast-in-Place Barrier End View

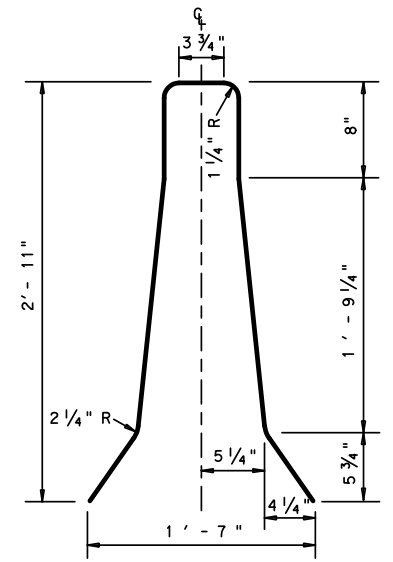


Reinforcement for Cast-in-Place Concrete Safety Barrier (FW-Type 1)

Showing reinforcement for CSB. Expansion joints to be placed every 100 ft. or less.



Concrete Safety Barrier



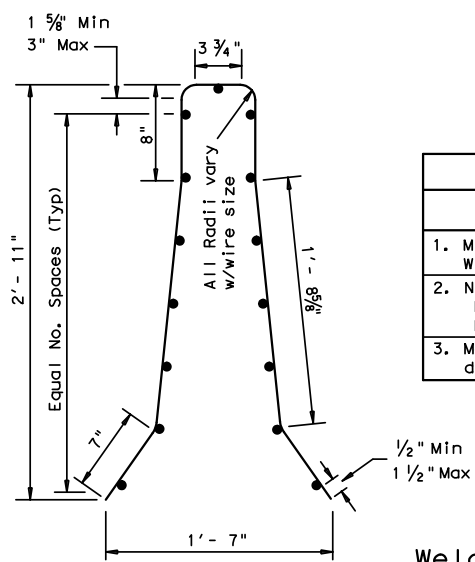
S4 Bar
#5 Rebar
Used with Cast-in-place Concrete Safety Barrier (CSB).

Approximate Per L.F. Quantities		
		C.I.P
Concrete	CY.	0.140
Rebar	LB.	15.28

For Contractor's information only

General Notes

- Concrete shall be Class C or H.
- Where used, rebar reinforcement shall be Grade 60 and conform to ASTM A615.
- Conduit trough and drainage slots may be omitted, as shown elsewhere or as directed by the Engineer.
- Cast-in-place barrier may be slip formed. Additional reinforcement may be tack welded to the upper two-thirds of the reinforcement cage to provide bracing. Do not weld to M bars or anchor bolts.



Welded Wire Reinforcement (WWR) Table		
DESCRIPTION	LONGITUDINAL WIRE	VERTICAL WIRE
1. Min. (Cumulative Total) Wire Area	Match R Bars (in ² /ft.)	Match S Bars (in ² /ft.)
2. Number of Wires	No. of Wires	
Minimum	11	
Maximum	15	
3. Maximum wire size differential	The smaller wire shall have an area of 40% or more of the larger wire.	

Welded Wire Reinforcement (WWR) Option for Bars S and R (Cast-in-Place)

General Notes

- Deformed Welded Wire Reinforcement shall conform to ASTM A497.
- Deformed welded wire reinforcement (WWR) may be used as an option to conventional reinforcement. Combinations of reinforcing steel and WWR or configurations of WWR other than shown will be permitted when conditions in the table are satisfied and the dimension from the end of section to first welded wire does not exceed 3".

LEVELS DISPLAYED
1



CONCRETE SAFETY BARRIER (F-SHAPE)
REINFORCEMENT FOR CAST-IN-PLACE BARRIER (FW-TYPE 1)
CSB(1)-04(FW)

FILE: CSB1FW.dgn	DN: TxDOT	CK: AM	DW: BGD	CK:
© TxDOT December 2004	DIST	FEDERAL AID PROJECT		SHEET
REVISIONS				
Apr 2006 FTW Add 8" Height	COUNTY	CONTROL	SECT	JOB
				HIGHWAY