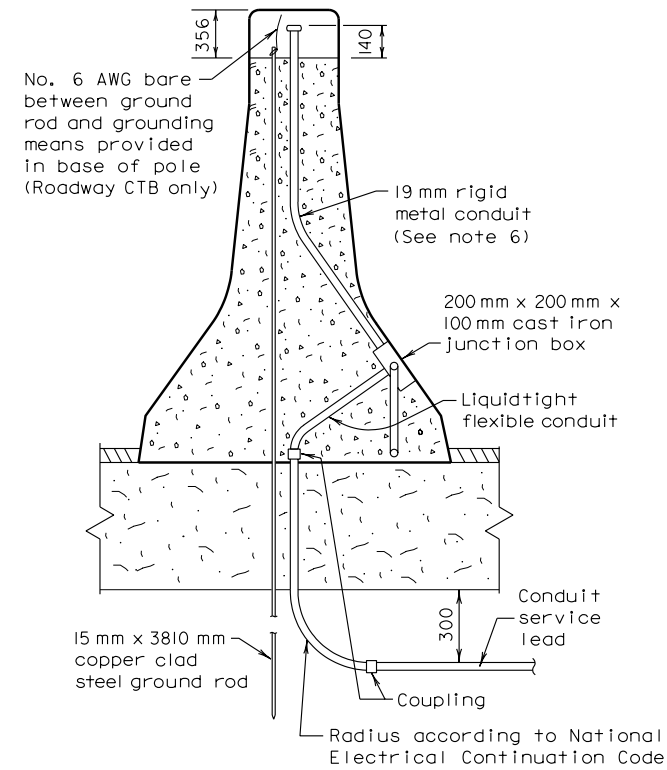


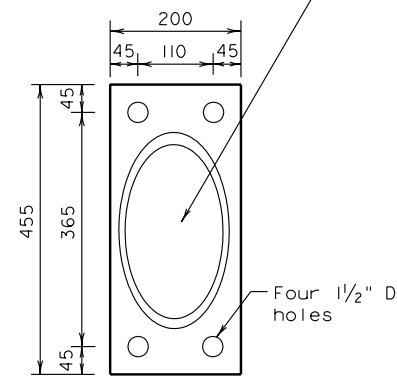
**GENERAL NOTES**

1. Poles on bridge barrier shall be grounded using a ground rod near the wing wall and grounding conductor to each pole.
2. Where roadway sections are precast, light poles shall be placed on cast-in-place sections as shown on sheet CTBI(3)(M).
3. Steel reinforcement of CTB near light poles is shown elsewhere.
4. Anchor bolts or rods, nuts, washers, templates and ground rods will not be paid for directly, but shall be considered subsidiary to the Item, "Permanent Concrete Traffic Barrier".
5. All conduit bends shall be in accordance with the National Electrical Code.
6. 19 mm liquidtight flexible metal conduit may be used in lieu of 19 mm rigid metal conduit from the junction box to luminaire pole base, except that 150 mm of conduit before and all conduit after exiting the concrete shall be rigid metal. Liquidtight flexible metal conduit shall be approved for use as a grounding conductor. The total length of all liquidtight flexible metal conduit in any ground return path shall be a maximum of 1830 mm. The conduit shall be terminated in fittings listed for grounding. Branch circuits for barrier mounted poles shall be on 60 amp breakers maximum.
7. Use special pole designation for Roadway Illumination Assemblies.  
Example: (Ty SP 14S-3-3) (.4kw) where length of arm is 3 meters (see RID Standard).



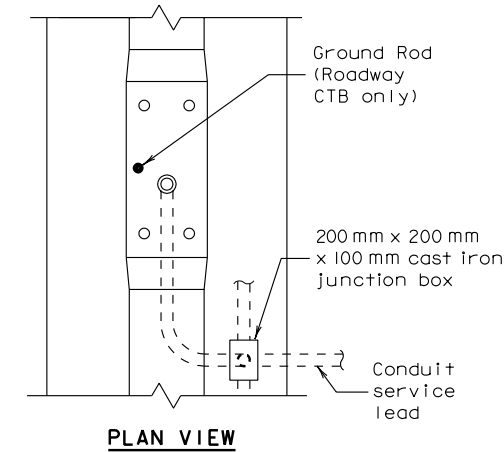
**SERVICE LEAD AND GROUND DETAIL  
AT LIGHT POLE (Roadway CTB)**

Approx. 180mm (\*6) X 305mm (\*6)  
opening in base plate

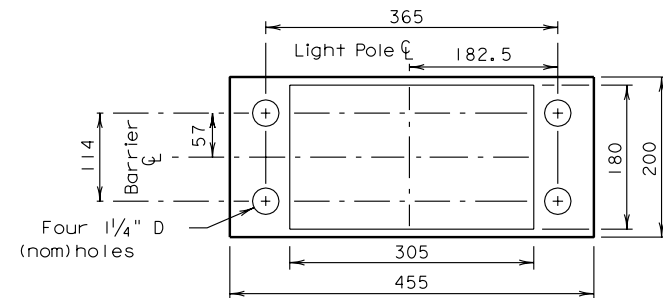


**SECTION A-A**

Shape of pole may be  
elliptical or polygonal

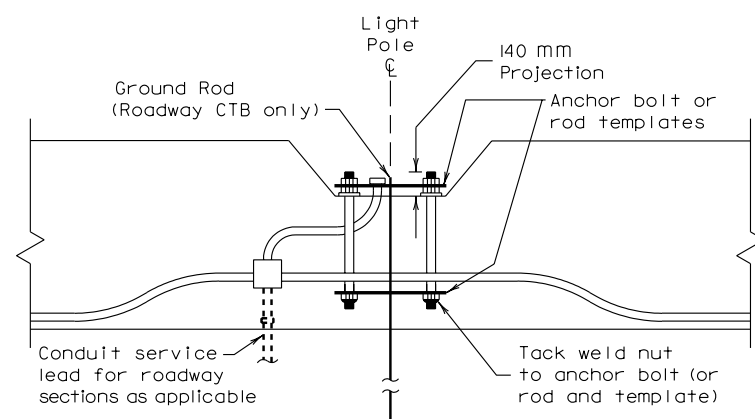


**PLAN VIEW**

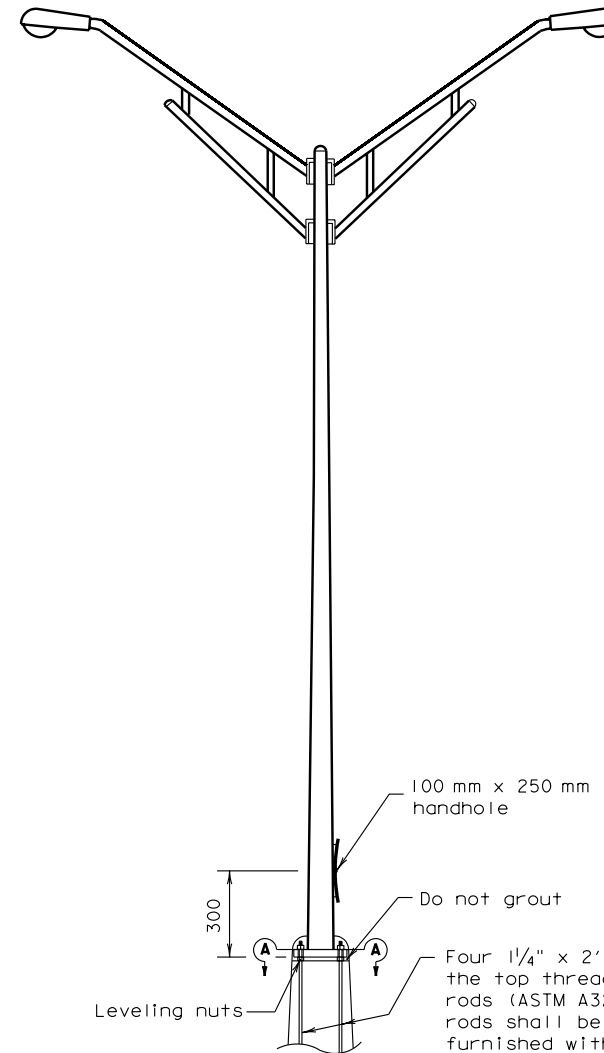


**ANCHOR BOLT TEMPLATE DETAIL**

6 mm plate top and 10 mm plate bottom.  
Bottom template may be field trimmed  
or drilled to accommodate drilled shaft  
reinforcement as directed by the Engineer.



**DETAILS AT LIGHT POLE ON BRIDGES AND  
ROADWAY (Cast-In-Place)**



**POLE DETAIL**

Four 1/4" x 2'-3" anchor bolts (ASTM A325 with the top threaded not less than 150 mm) or anchor rods (ASTM A321). The top end of the bolts or rods shall be galvanized not less than 200 mm and furnished with nuts (ASTM A563, Grade D, galvanized heavy hex) and flat and lock washers and template. The lower end of the bolts or rods shall be furnished with nuts and a template. The bottom nut shall be tack welded to the bolt or rod and to the template.

R = Radius  
D = Diameter

All unit-less  
dimensions are  
millimeters

REVISIONS:		Texas Department of Transportation				
		<b>CONCRETE TRAFFIC BARRIER</b>				
		BRIDGE AND ROADWAY WITH ILLUMINATION, POLE, CONDUIT, AND ANCHOR BOLT DETAILS CTBI (4) - 95 (FW) (M)				
ORIG DRAW DATE	DESIGN	FED. REG.	STATE	FEDERAL AID PROJ NO.	HIGHWAY	
FEB. 1996	CHECKED:	6	TEXAS			
	DRAWN:	DISTRICT	COUNTY	CONTROL SECTION	JOB	SHEET
	CHECKED:	FTW				