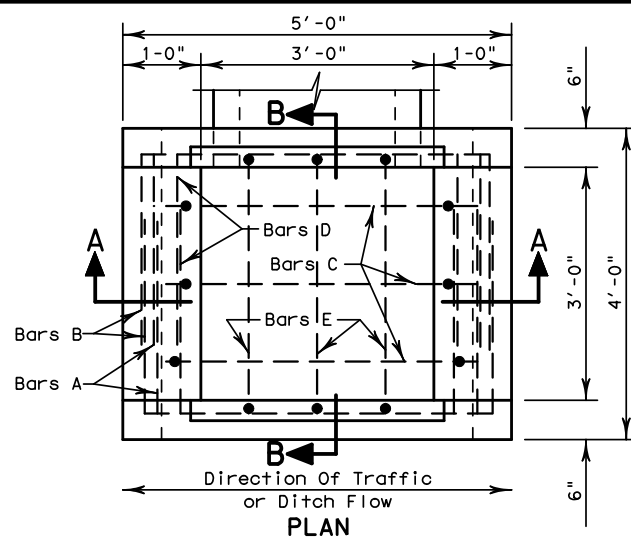


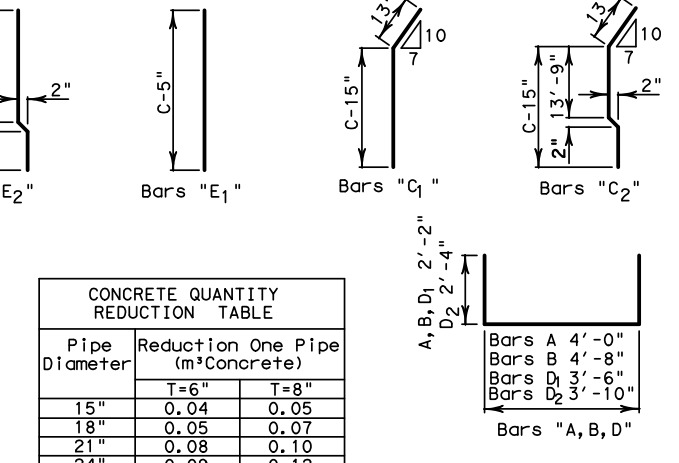
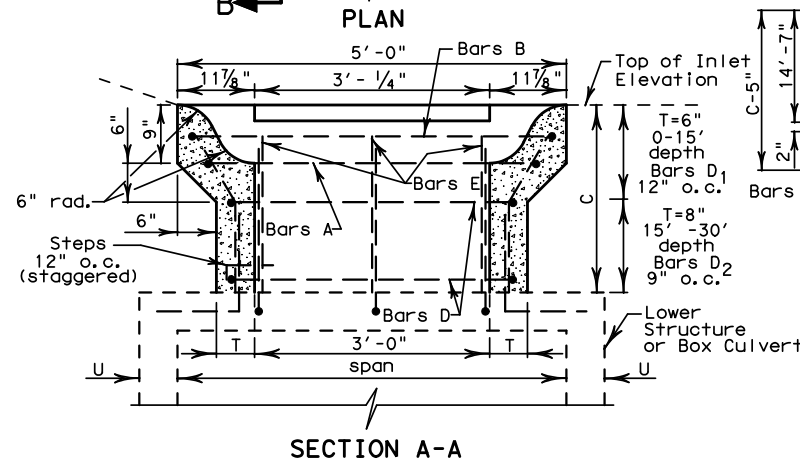
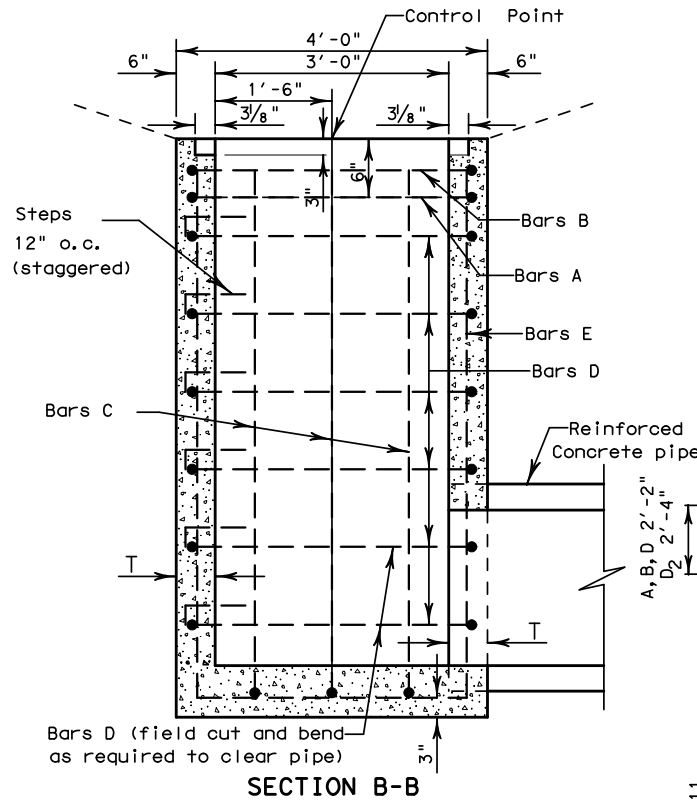
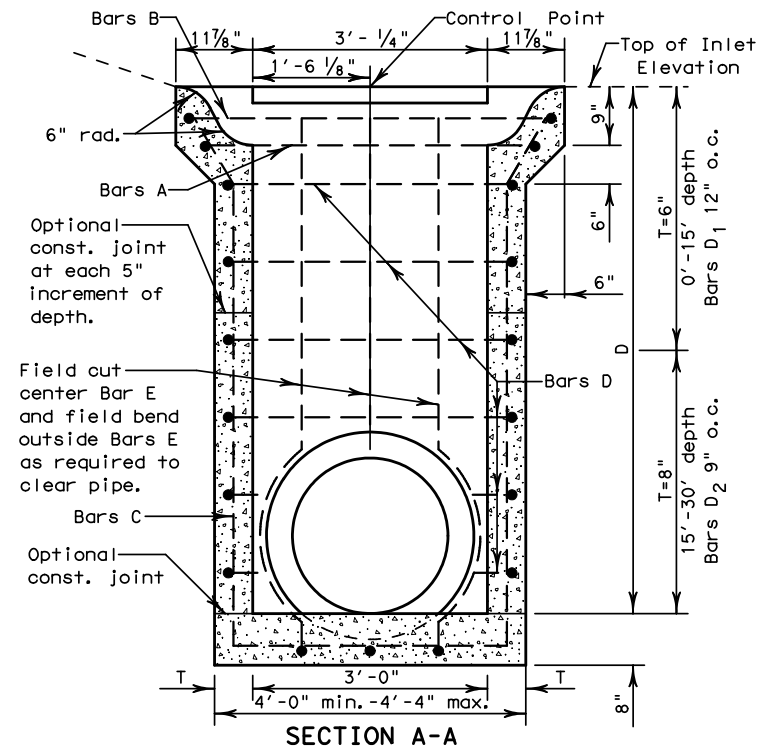
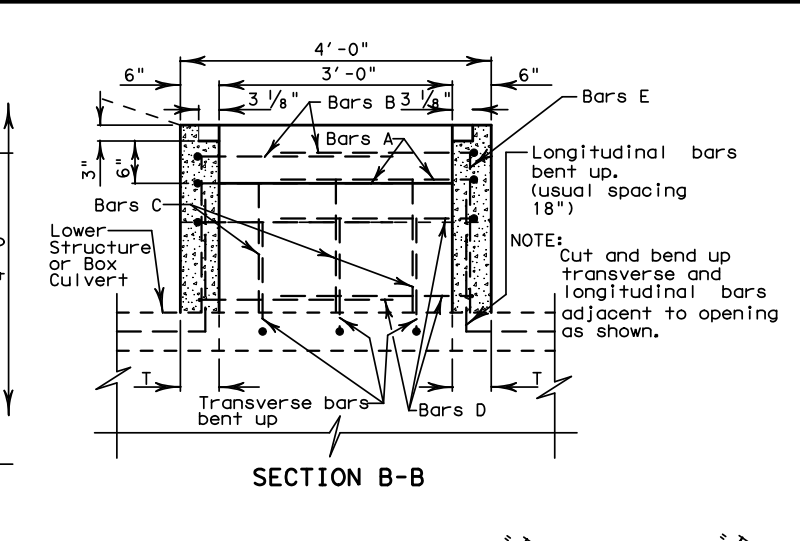
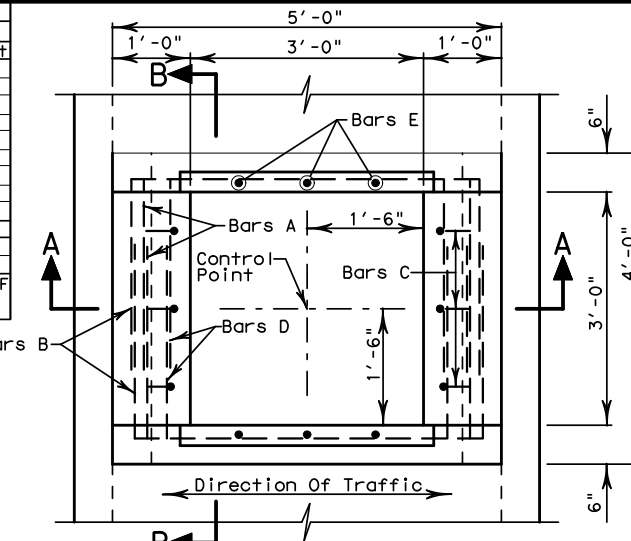
DISCLAIMER: The use of this standard is governed by the "Texas Engineering Practice Act". No warranty of any kind is made by TxDOT for any purpose whatsoever. TxDOT assumes no responsibility for the conversion of this standard to other formats or for incorrect results or damages resulting from its use.

http://www.dot.state.tx.us/ftw/specinfo/standard.htm di102fw.dgn

LEVELS DISPLAYED
1
2
3
4
5
6
7
8
9
10
11
12
13

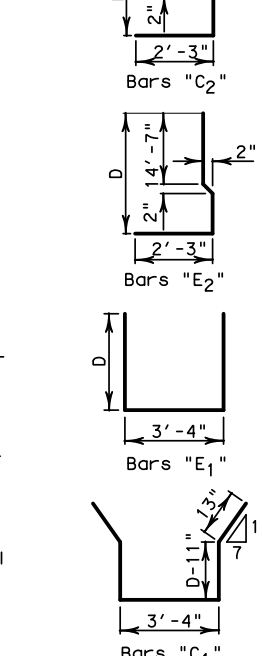
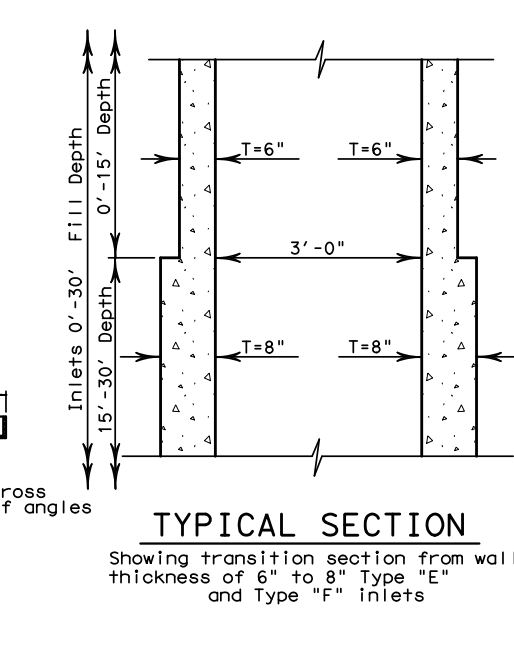
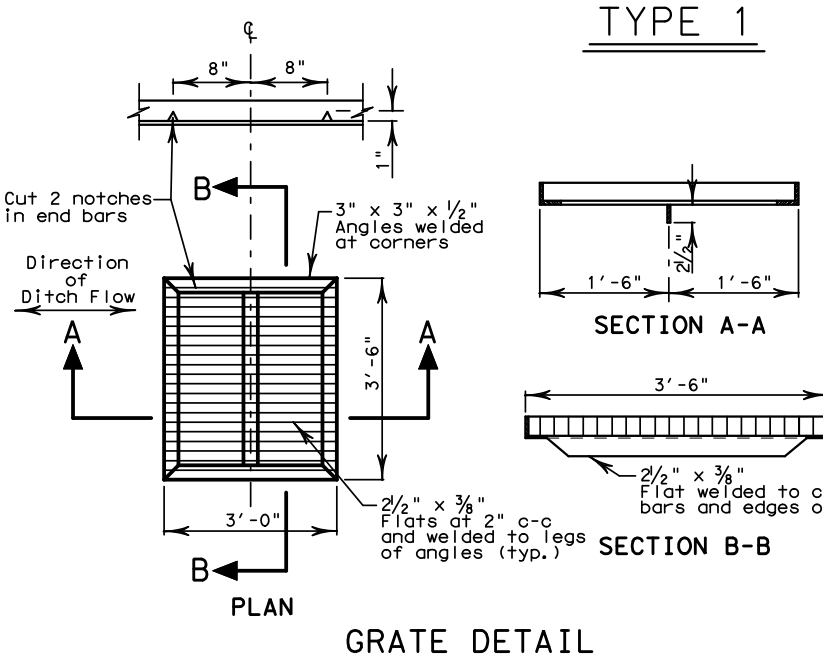
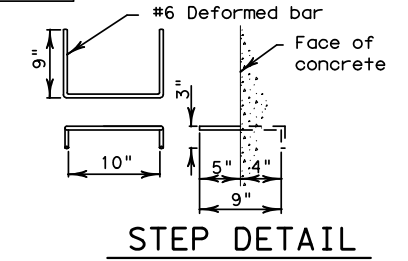


Bar	Size	Spacing	D=3'-0"		D=10'-0"		D=20'-0"		D=30'-0"	
			No.	Length Weight	No.	Length Weight	No.	Length Weight	No.	Length Weight
A	4	-	2	8'-4" 11	2	8'-4" 11	2	8'-4" 11	2	8'-4" 11
B	4	-	2	9'-0" 12	2	9'-0" 12	2	9'-0" 12	2	9'-0" 12
C1	4	12"	3	9'-8" 19	3	23'-8" 47	-	-	-	-
C2	4	12"	-	-	-	-	6	22'-6" 90	6	32'-6" 130
D1	4	12"	4	7'-10" 21	18	7'-10" 94	28	7'-10" 146	28	7'-10" 146
D2	4	9"	-	-	-	-	14	8'-6" 79	40	8'-6" 227
E1	4	12"	3	9'-4" 19	3	23'-4" 47	-	-	-	-
E2	4	12"	-	-	-	-	6	22'-4" 89	6	32'-4" 130
Steps	6	12"	1	2'-10" 4	8	2'-10" 34	18	2'-10" 77	28	2'-10" 119
Total Steel - Lbs.			86		245		505		775	
Class "A" Concrete - Cu. Yds.			1.223		3.036		6.210		9.830	
D=3'-0" Steel			86.35 Lb + 22.73 Lb/LF		D>15'-0" Steel		364.49 Lb + 27.03 Lb/LF			
D=3'-0" Conc.			1.223 CY + 0.259 CY/LF		D>15'-0" Conc.		4.400CY + 0.362 CY/LF			



Pipe Diameter	Reduction One Pipe (m ³ Concrete)	
	T=6"	T=8"
15"	0.04	0.05
18"	0.05	0.07
21"	0.08	0.10
24"	0.09	0.12
27"	0.11	0.15
30"	0.14	0.18
33"	0.17	0.22
36"	0.20	0.26

Bar	Size	Spacing	C-1'-3"		C-10'-0"		C-20'-0"		C-30'-0"	
			No.	Length Wt.	No.	Length Wt.	No.	Length Wt.	No.	Length Wt.
A	4	-	2	8'-4" 11	2	8'-4" 11	2	8'-4" 11	2	8'-4" 11
B	4	-	2	9'-0" 12	2	9'-0" 12	2	9'-0" 12	2	9'-0" 12
C1	4	12"	-	-	6	9'-10" 39	-	-	-	-
C2	4	12"	-	-	-	-	6	19'-11" 80	6	29'-11" 120
D1	4	12"	-	-	18	7'-10" 94	28	7'-10" 146	28	7'-10" 146
D2	4	9"	-	-	-	-	14	8'-6" 80	40	8'-6" 227
E1	4	12"	-	-	6	9'-7" 38	-	-	-	-
E2	4	12"	-	-	-	-	6	19'-8" 79	6	29'-8" 119
Steps	6	12"	-	-	8	2'-10" 34	18	2'-10" 77	28	2'-10" 119
Total Steel (Lbs)			23		228		485		754	
Class "A" Conc. -Cu. Yds.			0.375		2.641		5.746		9.366	
C=1'-3" Steel			30.84 Lb + 22.73 Lb/LF		C=10'-0" Steel		343.38 Lb+27.03 Lb/LF			
C=1'-3" Conc.			0.375 CY + 0.259 CY/LF		C >15'-0" Conc.		3.936 CY + 0.362 CY/LF			

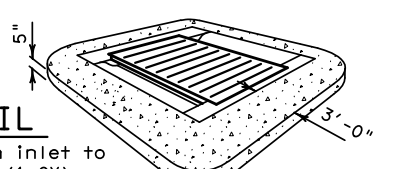


GENERAL NOTES

- All concrete shall be Class "A".
- All dimensions relating to reinforcing steel are to centers of bars. Reinforcing steel shall be placed with the centers of outside layers of bars 3" from the concrete surface where the wall thickness, T, is 6" and shall be placed with the centers of outside layers of bars 4" from the concrete surface where the wall thickness, T, is 8" unless otherwise noted.
- Grate shall conform to Item 471.
- Location of inlet as shown in the plans refers to control point shown on this sheet. Inlet shall be aligned so that grate vanes are parallel to ditch flow. For type 1-C structures not on culverts, lower structure may be positioned as required to align with top structure, storm drain pipes, or other adjacent structures.
- When used with junction box, measure and pay for drop inlet and junction box separately.

RIPRAP DETAIL

Riprap to be placed at each inlet to conform to adjacent slopes (1 CY)



<p>REVISIONS: 10/09-Added note to pay for junction box separately</p>					
<p>Texas Department of Transportation FORT WORTH DISTRICT © 2002 by Texas Department of Transportation All Rights Reserved</p>					
<p>DROP INLET DETAILS TYPES 1 & 1-C DI-1-02 (FW)</p>					
ORIG DRAW DATE: 8/02	DESIGNER:	FED. REG.:	STATE:	PROJ. NO.:	HIGHWAY:
CHECKED:	6	TEXAS			
DRAWN:	DISTRICT	COUNTY	CONTROL SECTION	JOB	SHEET
CHECKED:	FTW				