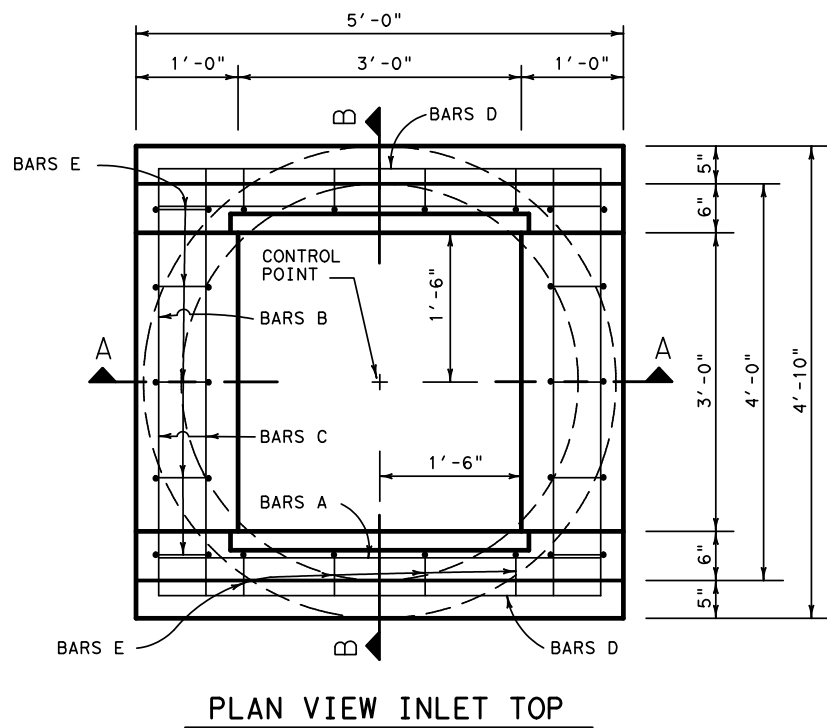


DISCLAIMER: The use of this standard is governed by the "Texas Engineering Practice Act". No warranty of any kind is made by TxDOT for any purpose whatsoever. TxDOT assumes no responsibility for the conversion of this standard to other formats or for incorrect results or damages resulting from its use.

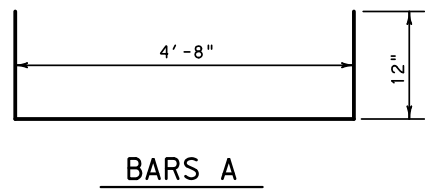
http://www.dot.state.tx.us/ftw/specinfo/standard.htm di202fw.dgn

LEVELS DISPLAYED	
1	
2	
3	
4	
5	
6	
7	
8	
9	
10	

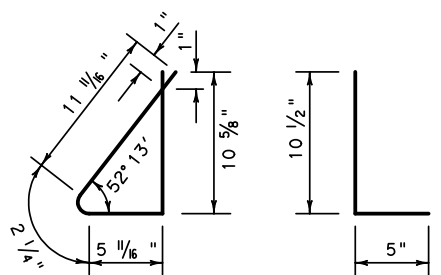
TABLE OF QUANTITIES TYPE 2 INLET						
BARS	A	B	C	D	E	F
NUMBER	6	4	4	2	10	8
SIZE	#4	#4	#4	#4	#4	#4
SPACING	4 1/2" ±	4 1/2" ±	5 1/2" ±	~	11" ±	11" ±
LENGTH	6'-8"	3'-8"	4'-8"	4'-8"	2'-6"	1'-4"
WEIGHT	27	10	12	6	17	7
TOTAL REINF. STEEL					79 LB.	
TOTAL CONCRETE					0.49 C.Y.	



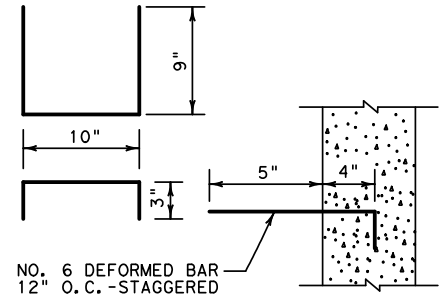
PLAN VIEW INLET TOP



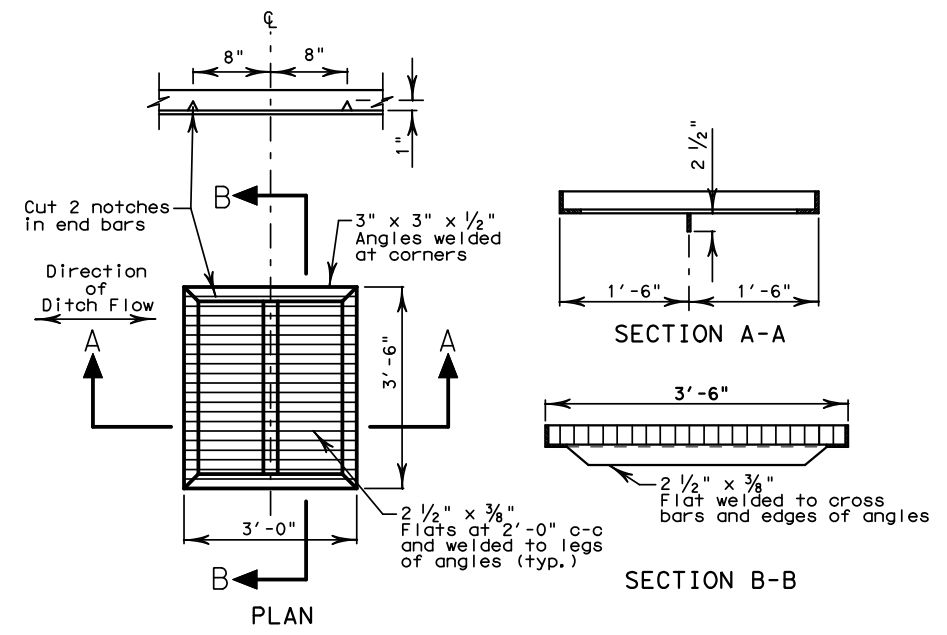
BARS A



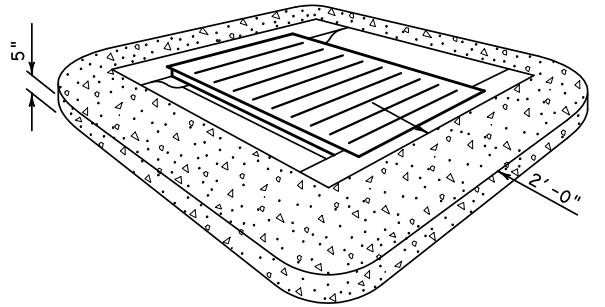
BARS E BARS F



STEPS

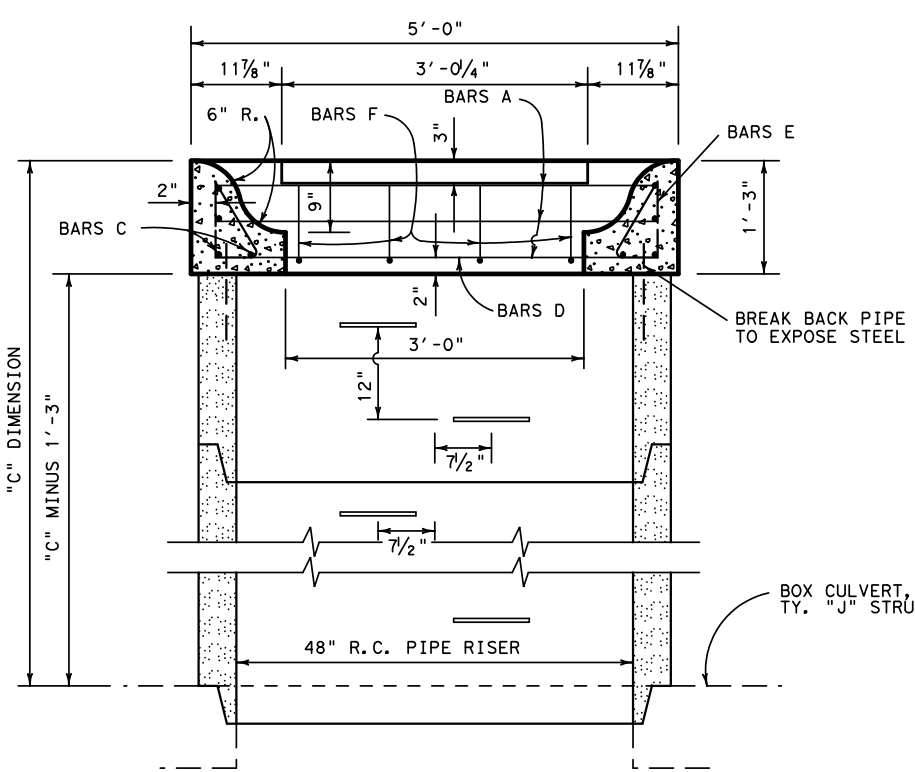


GRATE DETAIL

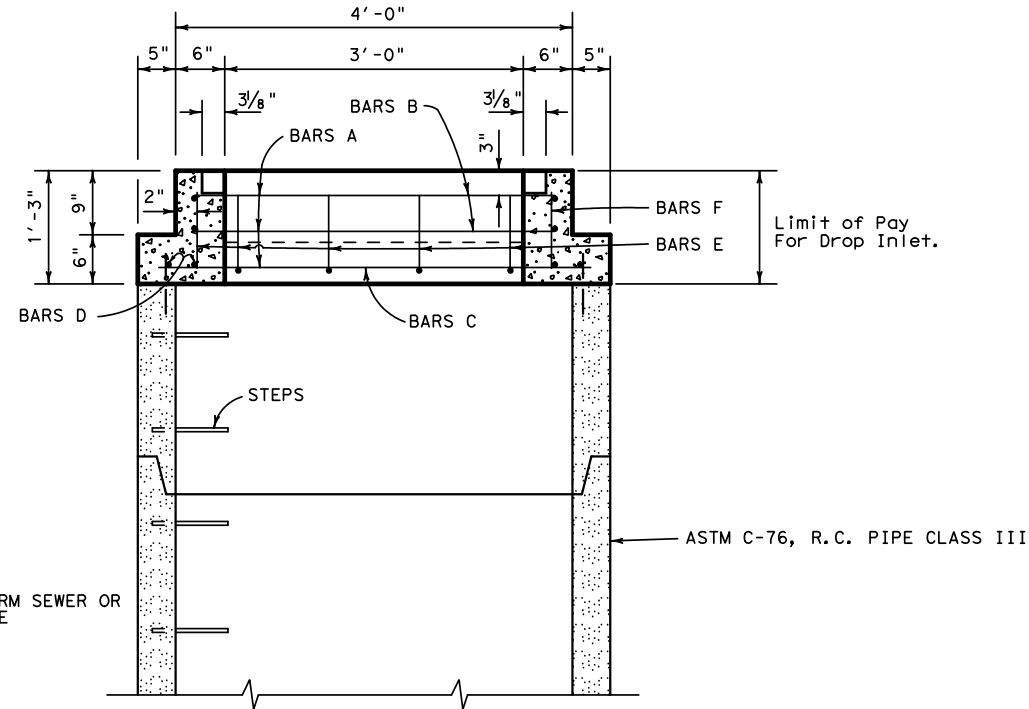


RIPRAP DETAIL

Riprap to be placed on each inlet to conform to adjacent slopes (1 C.Y.)



SECTION A-A



SECTION B-B

GENERAL NOTES:

- ALL CONCRETE SHALL BE CLASS "A".
- ALL DIMENSIONS RELATING TO REINFORCING STEEL ARE TO CENTERS OF BARS.
- GRATE SHALL CONFORM TO ITEM 471.
- PIPE RISER SHALL CONFORM TO AND BE PAID FOR IN ACCORDANCE WITH ITEM 464. STEPS ARE TO BE INSTALLED IN THE PIPE RISER AT THE PLANT. THE FURNISHING AND INSTALLATION OF THE STEPS WILL NOT BE PAID FOR DIRECTLY, BUT SHALL BE CONSIDERED SUBSIDIARY TO ITEM 464.
- LOCATION OF INLET AS SHOWN IN THE PLANS REFERS TO CONTROL POINT SHOWN ON THIS SHEET. INLET SHALL BE ALIGNED SO THAT GRATE VANES ARE PARALLEL TO DITCH FLOW. FOR STRUCTURES NOT ON CULVERTS, LOWER STRUCTURE MAY BE POSITIONED AS REQUIRED TO ALIGN WITH TOP STRUCTURE, STORM DRAIN PIPES OR OTHER ADJACENT STRUCTURES.
- WHEN USED WITH JUNCTION BOX, MEASURE AND PAY FOR DROP INLET, PIPE RISER, AND JUNCTION BOX SEPARATELY.

REVISIONS: 10/09-Added note to pay for junction box separately		Texas Department of Transportation FORT WORTH DISTRICT © 2002 by Texas Department of Transportation; All Rights Reserved				
ORIG DRAW DATE: 8/02		DESIGN:	FED. REG.	STATE	PROJ. NO.	HIGHWAY
CHECKED:		6	TEXAS	CONTROL SECTION	JOB	SHEET
DRAWN:		DISTRICT	COUNTY	CONTROL SECTION	JOB	SHEET
CHECKED:		FTW	FTW	FTW	FTW	FTW

DROP INLET DETAILS
TYPE 2 INLET
DI-2-02 (FW)