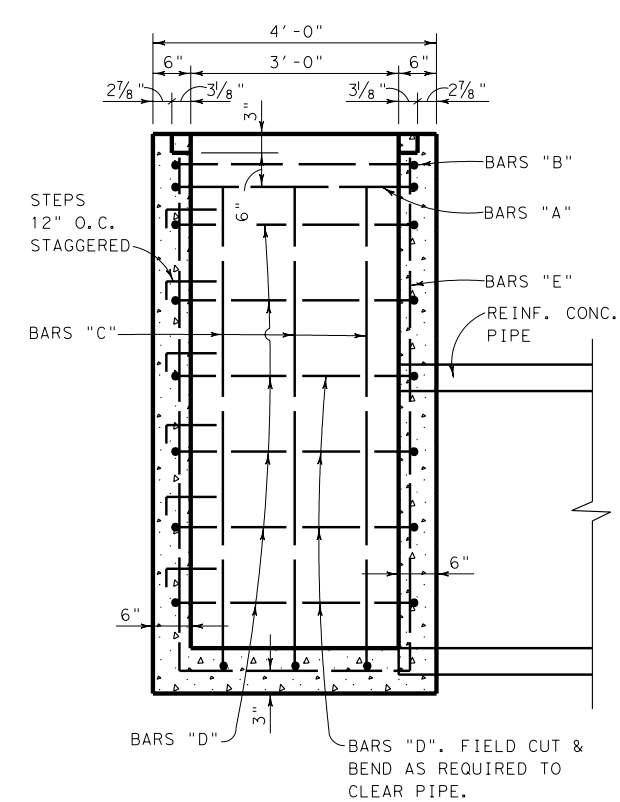
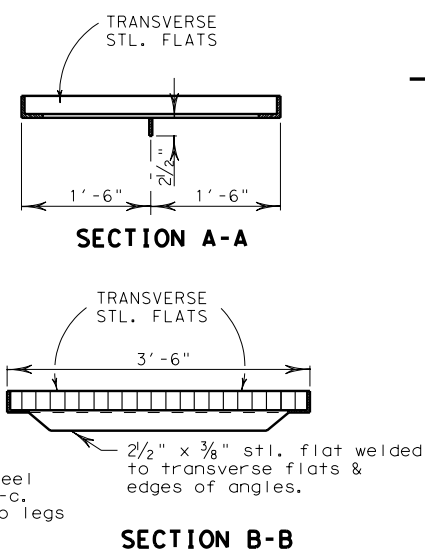
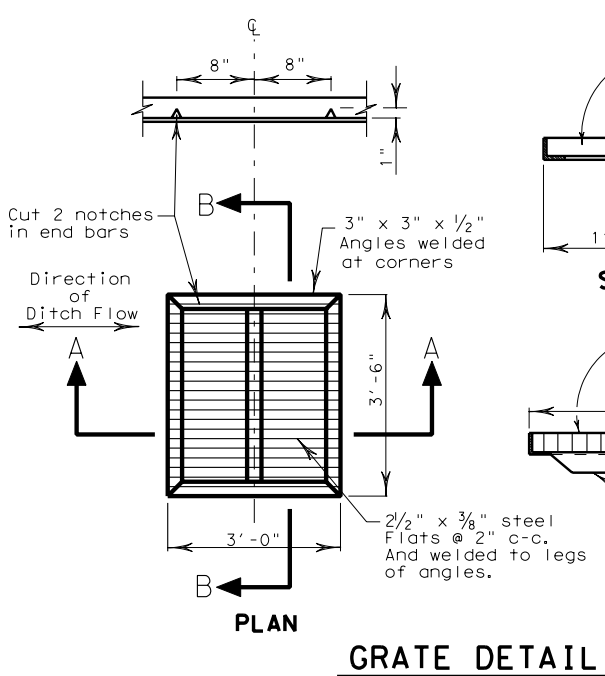
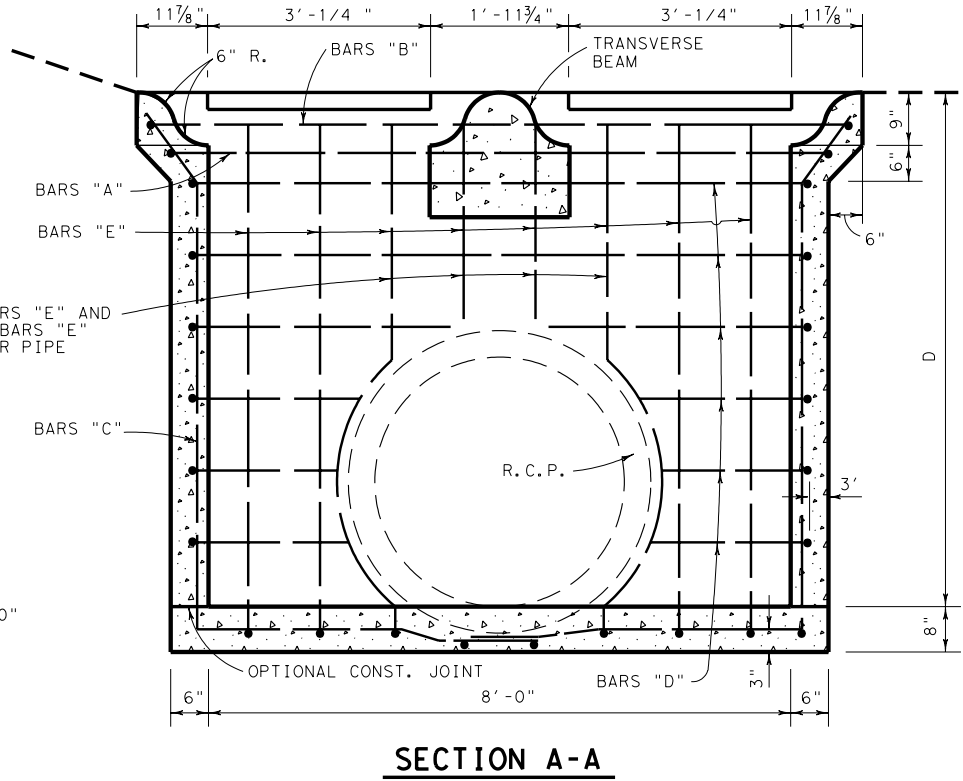
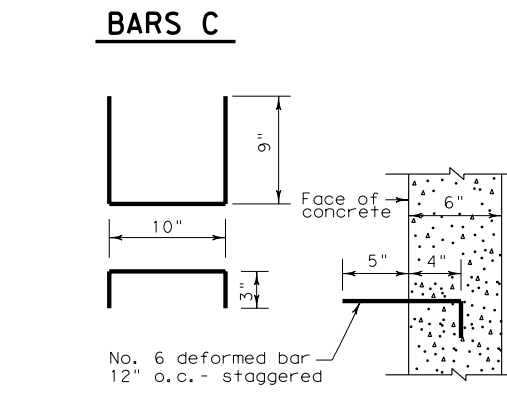
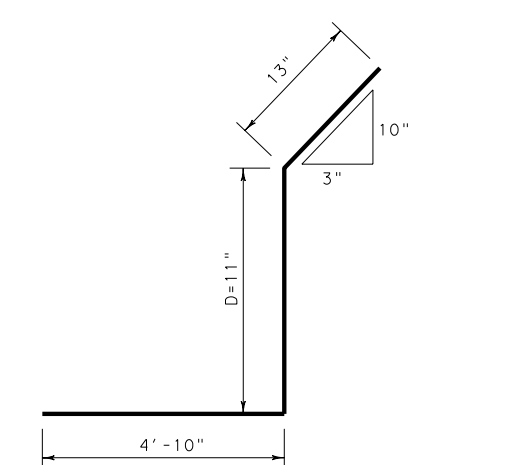
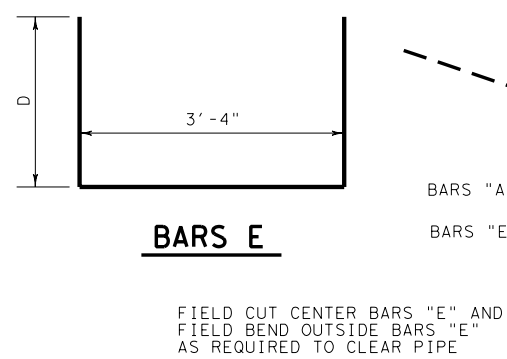
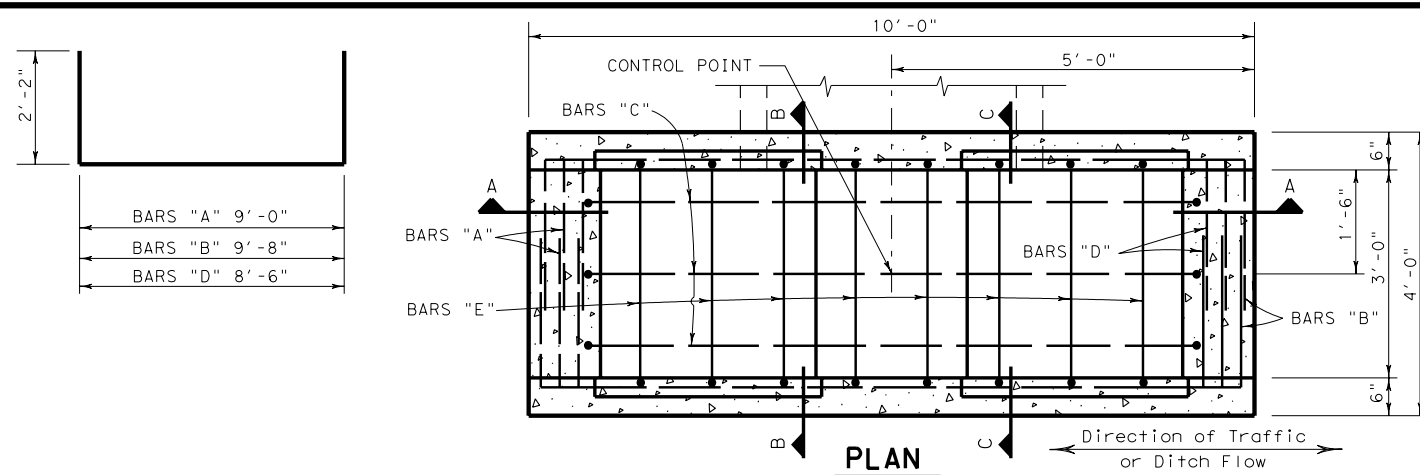


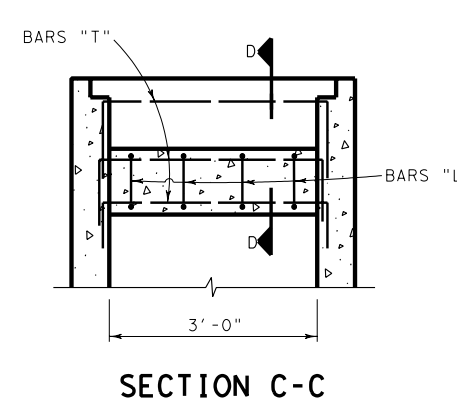
DISCLAIMER: The use of this standard is governed by the "Texas Engineering Practice Act". No warranty of any kind is made by TxDOT for any purpose whatsoever. TxDOT assumes no responsibility for the conversion of this standard to other formats or for incorrect results or damages resulting from its use.

https://www.dot.state.tx.us/ftw/spec/info/standard.htm di302fw.dgn

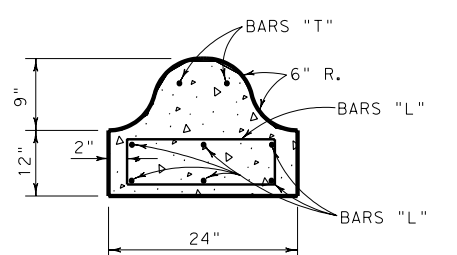
LEVELS DISPLAYED
1
2
3
4
5
6



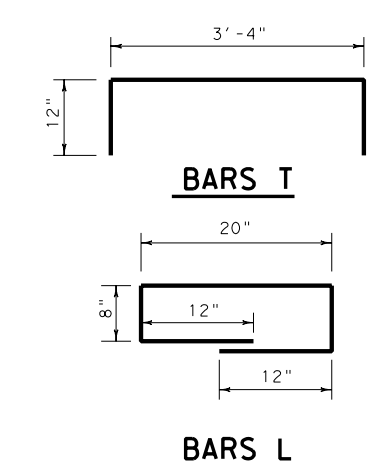
SECTION B-B



SECTION C-C



SECTION D-D



BARS T

BARS L

BARS	SIZE	SPAC.	D = 4'-0"		D = 5'-0"		D = 6'-0"		D = 7'-0"		D = 8'-0"			
			NO.	LNTH.	WT.	NO.	LNTH.	WT.	NO.	LNTH.	WT.	NO.	LNTH.	WT.
A	No. 4	-	2	13'-4"	18	2	13'-4"	18	2	13'-4"	18	2	13'-4"	18
B	No. 4	-	2	14'-0"	19	2	14'-0"	19	2	14'-0"	19	2	14'-0"	19
C	No. 4	12"	6	9'-0"	36	6	10'-0"	40	6	11'-0"	44	6	12'-0"	48
D	No. 4	12"	6	12'-10"	51	8	12'-10"	69	10	12'-10"	86	12	12'-10"	103
E	No. 4	12"	8	11'-4"	61	8	13'-4"	71	8	15'-4"	82	8	17'-4"	93
STEPS	No. 6	12"	2	2'-10"	9	3	2'-10"	13	4	2'-10"	17	5	2'-10"	21
L	No. 4	-	4	4'-4"	11	4	4'-4"	11	4	4'-4"	11	4	4'-4"	11
T	No. 4	-	8	5'-4"	29	8	5'-4"	29	8	5'-4"	29	8	5'-4"	29
TRANSVERSE BEAM	STEEL		40		40		40		40		40			
	CONC.		0.30		0.30		0.30		0.30		0.30			
TOTAL STEEL, LBS.			234		270		306		342		378			
CL. "A" CONC. C. Y.			2.647		2.999		3.351		3.703		4.055			
D = 4' TO D = 15'											ADD. STEEL P.L.F.		36 LBS.	
											ADD. CONC. P.L.F.		0.352 C. Y.	

- GENERAL NOTES:
- ALL CONCRETE SHALL BE CLASS "A".
 - ALL DIMENSIONS RELATING TO REINFORCING STEEL ARE TO CENTERS OF BARS. REINFORCING STEEL SHALL BE PLACED WITH THE CENTERS OF OUTSIDE LAYERS OF BARS 3" FROM THE CONCRETE SURFACE WHERE THE WALL THICKNESS IS 6".
 - GRATE SHALL CONFORM TO ITEM 471
 - LOCATION OF INLET AS SHOWN IN THE PLANS REFERS TO CONTROL POINT SHOWN ON THIS SHEET. INLET SHALL BE ALIGNED SO THAT GRATE VANES ARE PARALLEL TO DITCH FLOW.

Pipe Diameter	Cu. Yds. Conc. Reduction One Pipe T=6"
15"	0.04
18"	0.05
21"	0.08
24"	0.09
27"	0.11
30"	0.14
33"	0.17
36"	0.20
39"	0.23
42"	0.27
45"	0.31
48"	0.35
54"	0.44
60"	0.54

REVISIONS:		 TEXAS DEPARTMENT OF TRANSPORTATION FORT WORTH DISTRICT <small>© 2002 by Texas Department of Transportation; All Rights Reserved.</small>			
DROP INLET DETAILS TYPE 3 INLET DI-3-02 (FW)		ORIG DRAW DATE: 8/02	DESIGN: CHECKED: DRAWN: CHECKED:	FED. REG. STATE: TEXAS	PROJ. NO. CONTROL SECTION: JOB SHEET