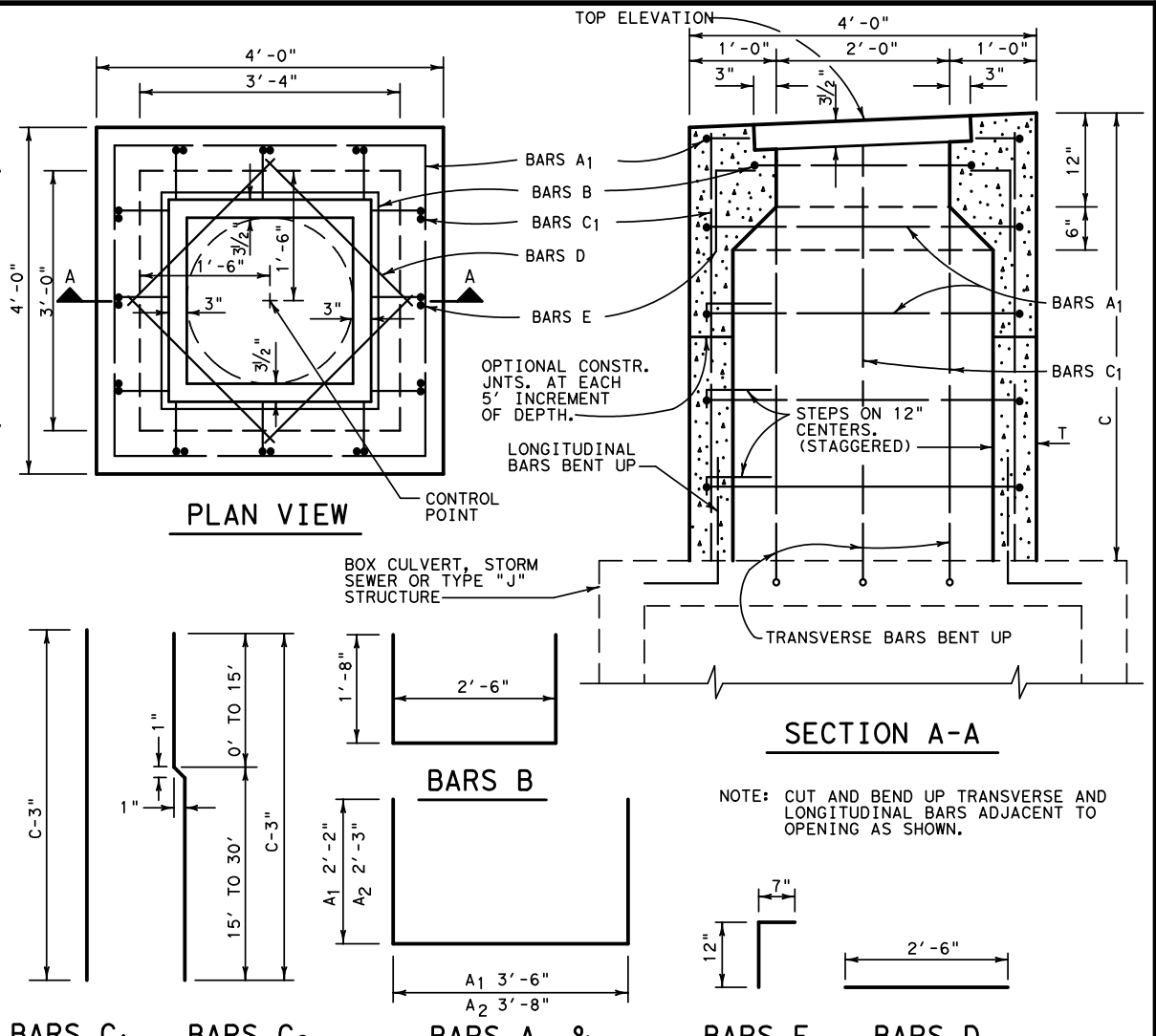
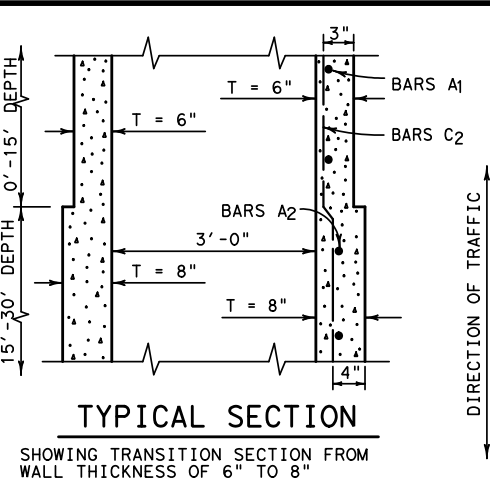
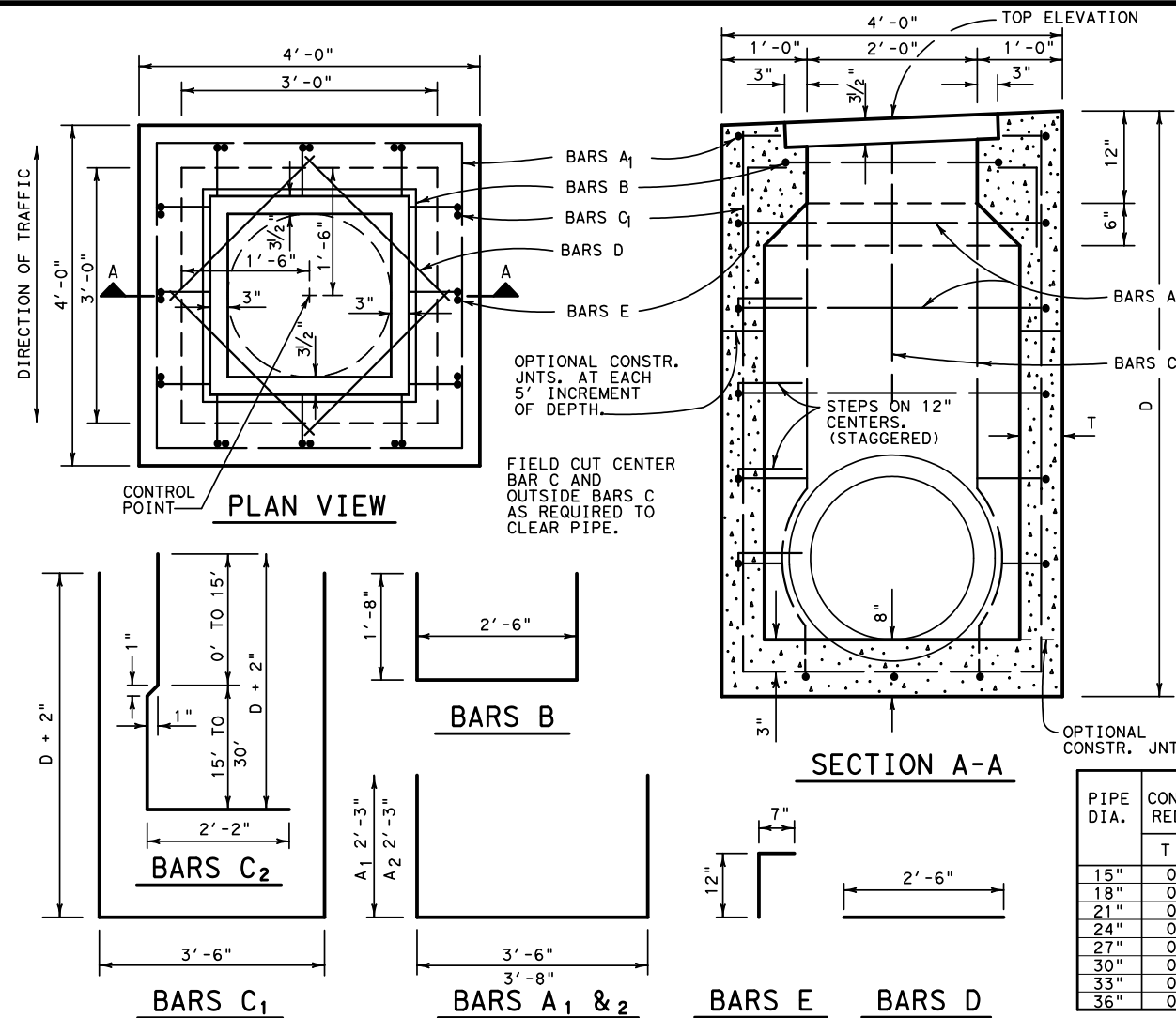


DISCLAIMER: The use of this standard is governed by the "Texas Engineering Practice Act". No warranty of any kind is made by TxDOT for any purpose whatsoever. TxDOT assumes no responsibility for the conversion of this standard to other formats or for incorrect results or damages resulting from its use.

http://www.dot.state.tx.us/ftw/specinfo/standard.htm gi202fw.dgn

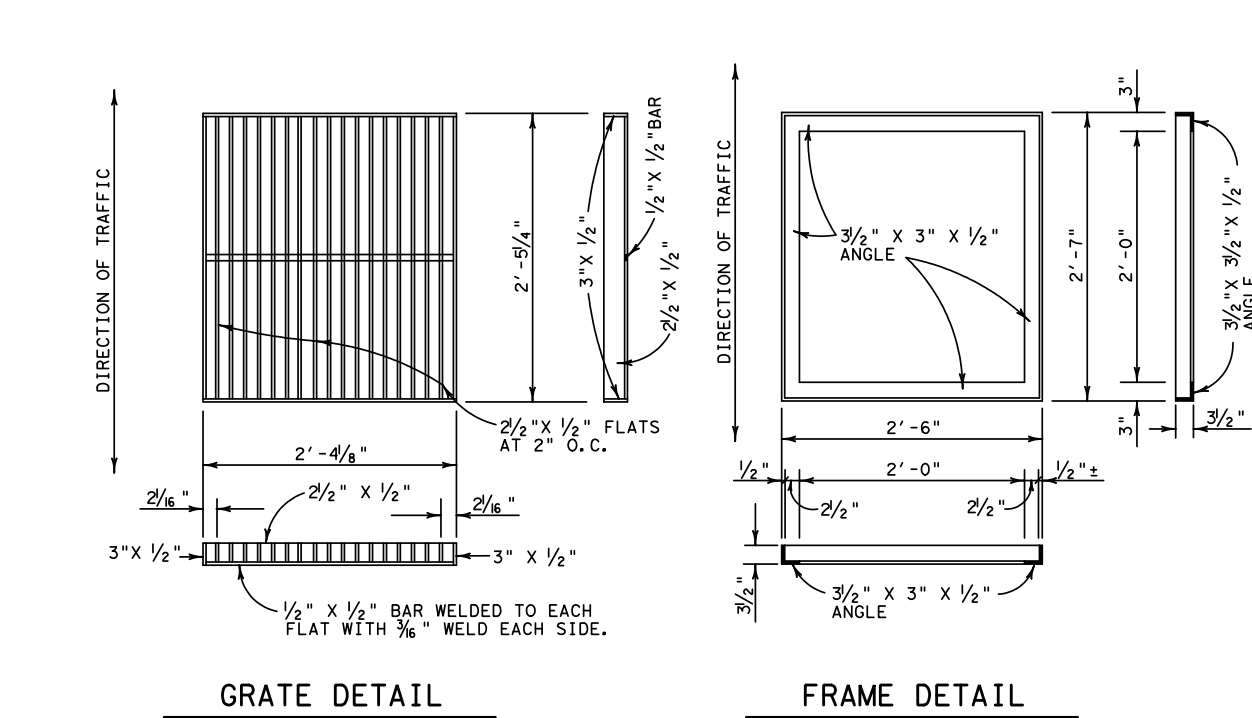
1	2	3
4	5	6
7	8	9
10	11	12
13	14	15
16	17	18
19	20	21
22	23	24
25	26	27
28	29	30
31	32	33
34	35	36
37	38	39
40	41	42
43	44	45
46	47	48
49	50	51
52	53	54
55	56	57
58	59	60
61	62	63
64	65	66
67	68	69
70	71	72
73	74	75
76	77	78
79	80	81
82	83	84
85	86	87
88	89	90
91	92	93
94	95	96
97	98	99
100	101	102



TYPE 2 STRUCTURE

TYPE 2-C STRUCTURE

PIPE DIA.	CONCRETE QUANTITY REDUCTION TABLE	
	T = 6"	T = 8"
15"	0.04	0.05
18"	0.05	0.07
21"	0.08	0.10
24"	0.09	0.12
27"	0.11	0.15
30"	0.14	0.18
33"	0.17	0.22
36"	0.20	0.26



BARS	SPAC.	D = 3'-0"					D = 4'-0"					D = 10'-0"					D = 20'-0"					D = 30'-0"				
		NO.	LNTH.	WT.	NO.	LNTH.	WT.	NO.	LNTH.	WT.	NO.	LNTH.	WT.	NO.	LNTH.	WT.	NO.	LNTH.	WT.	NO.	LNTH.	WT.	NO.	LNTH.	WT.	
A1	12"	6	7'-10"	31	8	7'-10"	42	20	7'-10"	105	30	7'-10"	157	30	7'-10"	157	30	7'-10"	157	30	7'-10"	157	30	7'-10"	157	
A2	12"																									
B	-	2	5'-10"	8	2	5'-10"	8	2	5'-10"	8	2	5'-10"	8	2	5'-10"	8	2	5'-10"	8	2	5'-10"	8	2	5'-10"	8	
C1	12"	6	9'-9"	39	6	11'-9"	47	6	23'-9"	95																
C2	12"																									
D	-	4	2'-6"	7	4	2'-6"	7	4	2'-6"	7	4	2'-6"	7	4	2'-6"	7	4	2'-6"	7	4	2'-6"	7	4	2'-6"	7	
E	12"	12	1'-7"	13	12	1'-7"	13	12	1'-7"	13	12	1'-7"	13	12	1'-7"	13	12	1'-7"	13	12	1'-7"	13	12	1'-7"	13	
STEPS	12"	1	2'-10"	4	2	2'-10"	9	8	2'-10"	34	18	2'-10"	77	28	2'-10"	119										
TOTAL STEEL - LBS.			102			126			262			496			727											
CLASS "A" CONC. - CU. YDS.			1.44			1.70			3.25			6.37			10.01											

BARS	SPAC.	C = 1'-6"					C = 2'-0"					C = 10'-0"					C = 20'-0"					C = 30'-0"				
		NO.	LNTH.	WT.	NO.	LNTH.	WT.	NO.	LNTH.	WT.	NO.	LNTH.	WT.	NO.	LNTH.	WT.	NO.	LNTH.	WT.	NO.	LNTH.	WT.	NO.	LNTH.	WT.	
A1	12"	4	7'-10"	21	4	7'-10"	21	20	7'-10"	105	30	7'-10"	157	30	7'-10"	157	30	7'-10"	157	30	7'-10"	157	30	7'-10"	157	
A2	12"																									
B	-	2	5'-10"	8	2	5'-10"	8	2	5'-10"	8	2	5'-10"	8	2	5'-10"	8	2	5'-10"	8	2	5'-10"	8	2	5'-10"	8	
C1	12"																									
C2	12"																									
D	-	4	2'-6"	7	4	2'-6"	7	4	2'-6"	7	4	2'-6"	7	4	2'-6"	7	4	2'-6"	7	4	2'-6"	7	4	2'-6"	7	
E	12"	12	1'-7"	13	12	1'-7"	13	12	1'-7"	13	12	1'-7"	13	12	1'-7"	13	12	1'-7"	13	12	1'-7"	13	12	1'-7"	13	
STEPS	12"																									
TOTAL STEEL - LBS.			49			63			245			475			706											
CLASS "A" CONC. - CU. YDS.			0.65			0.78			2.85			5.97			9.61											

GENERAL NOTES:

- ALL CONCRETE SHALL BE CLASS "A".
- ALL DIMENSIONS RELATING TO REINFORCING STEEL ARE TO CENTERS OF BARS. REINFORCING STEEL SHALL BE PLACED WITH THE CENTERS OF OUTSIDE LAYERS OF BARS 3" FROM THE CONCRETE SURFACE WHERE THE WALL THICKNESS, T, IS 6" AND SHALL BE PLACED WITH THE CENTERS OF OUTSIDE LAYERS OF BARS 4" FROM THE CONCRETE SURFACE WHERE THE WALL THICKNESS, T, IS 8" UNLESS OTHERWISE NOTED.
- GRATE AND FRAME SHALL CONFORM TO ITEM 471.
- CONSTRUCT TOP TO CONFORM TO SLOPE OF PAVEMENT SURFACE.
- LOCATION OF INLET AS SHOWN IN THE PLANS REFERS TO CONTROL POINT SHOWN ON THIS SHEET. INLETS SHALL BE ALIGNED SO THAT GRATE VANES ARE PARALLEL TO DIRECTION OF TRAFFIC. FOR TYPE 2-C STRUCTURES NOT ON CULVERTS, LOWER STRUCTURE MAY BE POSITIONED AS REQUIRED TO ALIGN WITH TOP STRUCTURE, STORM DRAIN PIPES OR OTHER ADJACENT STRUCTURE.
- WHEN USED WITH JUNCTION BOX, MEASURE AND PAY FOR GRATED INLET AND JUNCTION BOX SEPARATELY.
- NOT TO BE USED IN OR ADJACENT TO AREAS DESIGNATED FOR PEDESTRIAN ACCESS.
- INLET TOP MAY BE CAST MONOLITHICALLY WITH CONCRETE PAVEMENT. IF NOT PLACED MONOLITHICALLY, A SEALED 1/2" EXPANSION JOINT SHALL BE PLACED AROUND THE TOP OF THE INLET, TO THE DEPTH OF CONCRETE PAVEMENT. CLASS 3, 4, 5 OR 7 JOINT SEALANT SHALL BE USED TO SEAL JOINT.

REVISIONS: 10/09-Added note to pay for junction box separately

Texas Department of Transportation  
FORT WORTH DISTRICT  
2002 by Texas Department of Transportation  
All Rights Reserved

GRATED INLET DETAILS  
TYPES 2 AND 2-C  
GI-2-02 (FW)

ORIG DRAW DATE: 8/02	DESIGNER: [ ]	FED. REG. CHECKED: 6	STATE CHECKED: TEXAS	PROJ. NO. [ ]	HIGHWAY [ ]
	DRAWN: [ ]	DISTRICT CHECKED: FTW	COUNTY CHECKED: [ ]	CONTROL SECTION: [ ]	JOB SHEET: [ ]