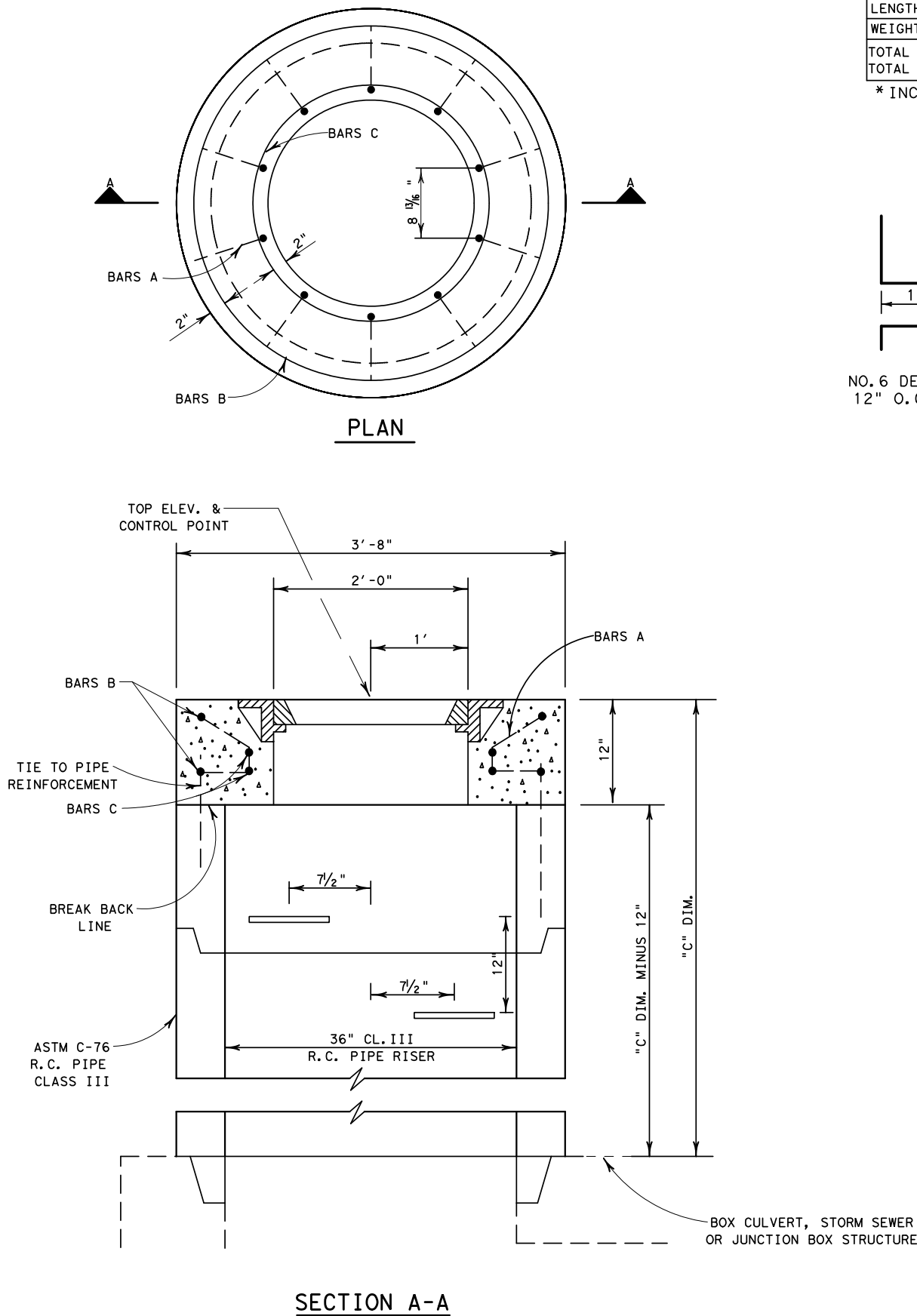


DISCLAIMER: The use of this standard is governed by the "Texas Engineering Practice Act". No warranty of any kind is made by TxDOT for any purpose whatsoever. TxDOT assumes no responsibility for the conversion of this standard to other formats or for incorrect results or damages resulting from its use.

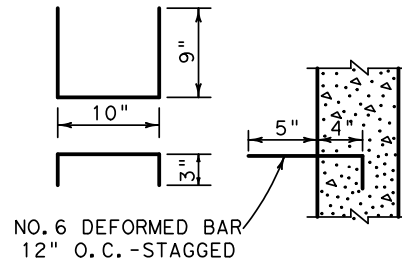
http://www.dot.state.tx.us/ftw/specinfo/standard.htm mh202fw.dgn

1	2	3	4	5	6	7	8	9	10

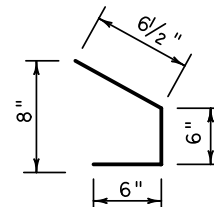


BILL OF REINFORCING STEEL FOR ONE MANHOLE TOP			
MARK	A	B	C
NUMBER	10	2	2
SIZE	#4	#4	#4
SPACING	SHOWN	-	-
LENGTH	1'-7"	11'-2"*	8'-7"*
WEIGHT	11	15	11
TOTAL REINFORCING STEEL			37 LB.
TOTAL CLASS A CONCRETE			.20 C.Y.

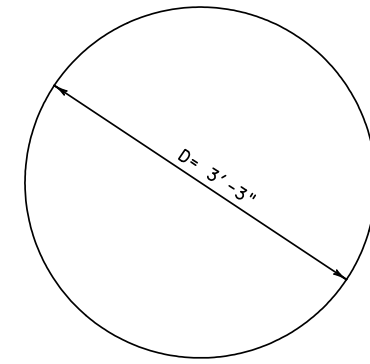
* INCLUDES LAP.



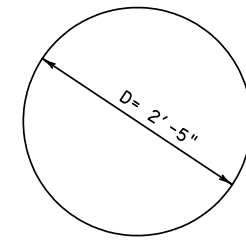
STEPS



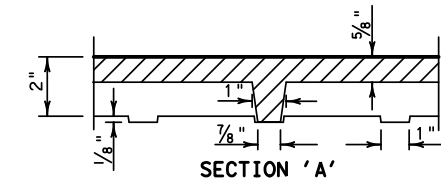
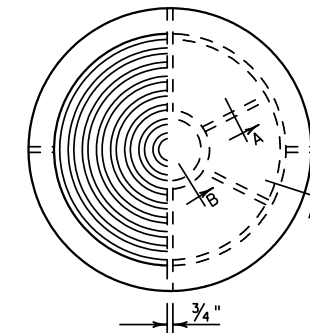
BAR A



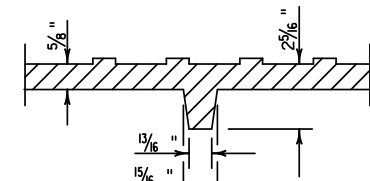
BAR B



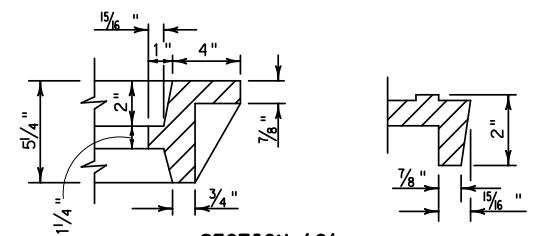
BAR C



SECTION 'A'



SECTION 'B'



SECTION 'C'

CAST IRON RING AND COVER

GENERAL NOTES:

- ALL CONCRETE SHALL BE CLASS "A".
- ALL DIMENSIONS RELATING TO REINFORCING STEEL ARE TO CENTERS OF BARS.
- RING AND COVER SHALL CONFORM TO ITEM 471.
- PIPE RISER SHALL CONFORM TO AND BE PAID FOR IN ACCORDANCE WITH ITEM 464. STEPS ARE TO BE INSTALLED IN THE PIPE RISER AT THE PLANT. THE FURNISHING AND INSTALLATION OF THE STEPS WILL NOT BE PAID FOR DIRECTLY, BUT SHALL BE CONSIDERED SUBSIDIARY TO ITEM 464.
- CONSTRUCT TOP TO CONFORM TO SLOPE OF SURFACE.
- LOCATION OF MANHOLE AS SHOWN IN THE PLANS REFERS TO CONTROL POINT SHOWN ON THIS SHEET. FOR STRUCTURES NOT ON CULVERTS, LOWER STRUCTURE MAY BE POSITIONED AS REQUIRED TO ALIGN WITH TOP STRUCTURE, STORM DRAIN PIPES OR OTHER ADJACENT STRUCTURES.
- MANHOLE TOP MAY BE CAST MONOLITHICALLY WITH CONCRETE PAVEMENT. IF NOT PLACED MONOLITHICALLY, A SEALED 1/2" EXPANSION JOINT SHALL BE PLACED AROUND THE TOP OF THE MANHOLE STRUCTURE, TO THE DEPTH OF CONCRETE PAVEMENT. CLASS 3, 4, 5 OR 7 JOINT SEALANT SHALL BE USED TO SEAL JOINT.
- WHEN USED WITH JUNCTION BOX, MEASURE AND PAY FOR MANHOLE AND JUNCTION BOX SEPARATELY.

REVISIONS: 10/09-Added note to pay for junction box separately	Texas Department of Transportation FORT WORTH DISTRICT © 2002 by Texas Department of Transportation, All Rights Reserved				
	STORM DRAIN MANHOLE DETAILS TYPE 2 MH-2-02 (FW)				
ORIG DRAW DATE: 8/02	DESIGN: CHECKED:	FED. REG. 6	STATE TEXAS	PROJ. NO.	HIGHWAY
DRAWN: CHECKED:	DISTRICT FTW	COUNTY	CONTROL SECTION	JOB	SHEET