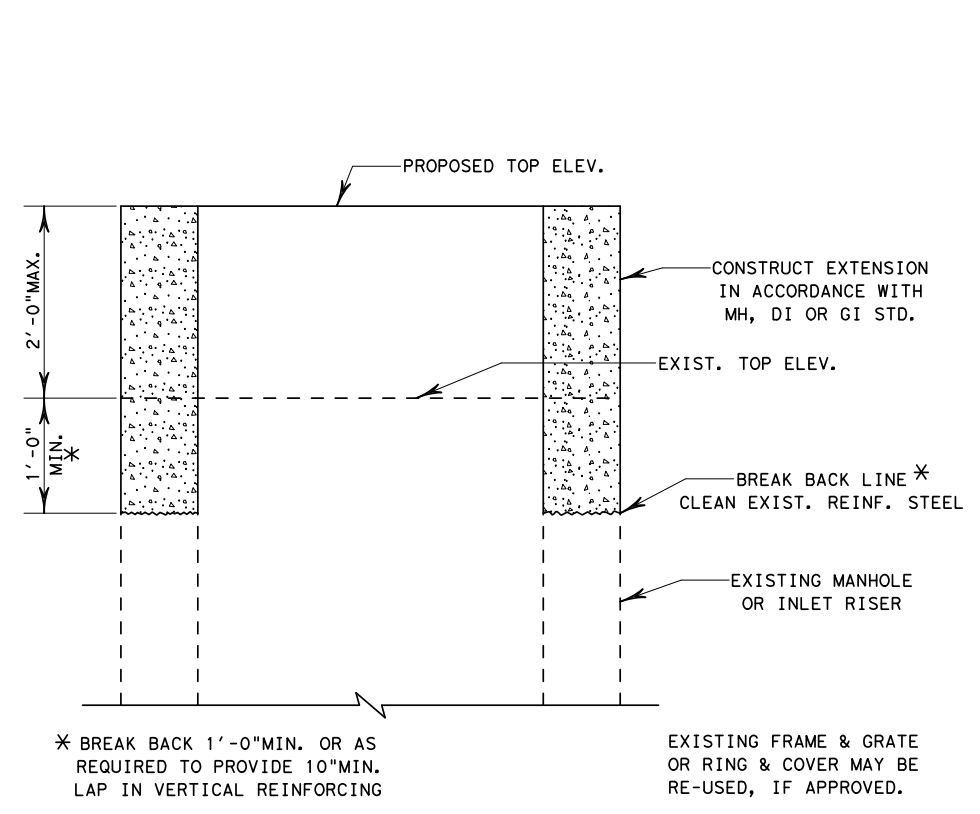


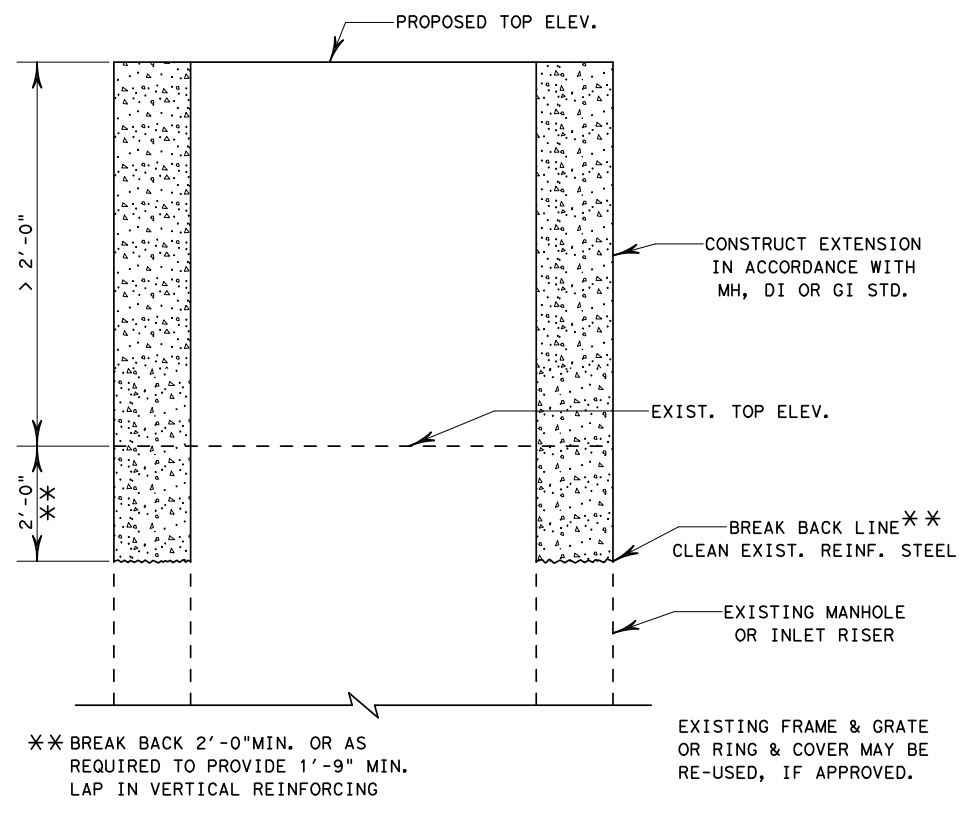
DISCLAIMER: The use of this standard is governed by the "Texas Engineering Practice Act". No warranty of any kind is made by TxDOT for any purpose whatsoever. TxDOT assumes no responsibility for the conversion of this standard to other formats or for incorrect results or damages resulting from its use.

http://www.dot.state.tx.us/ftw/specinfo/standard.htm micofw.dgn

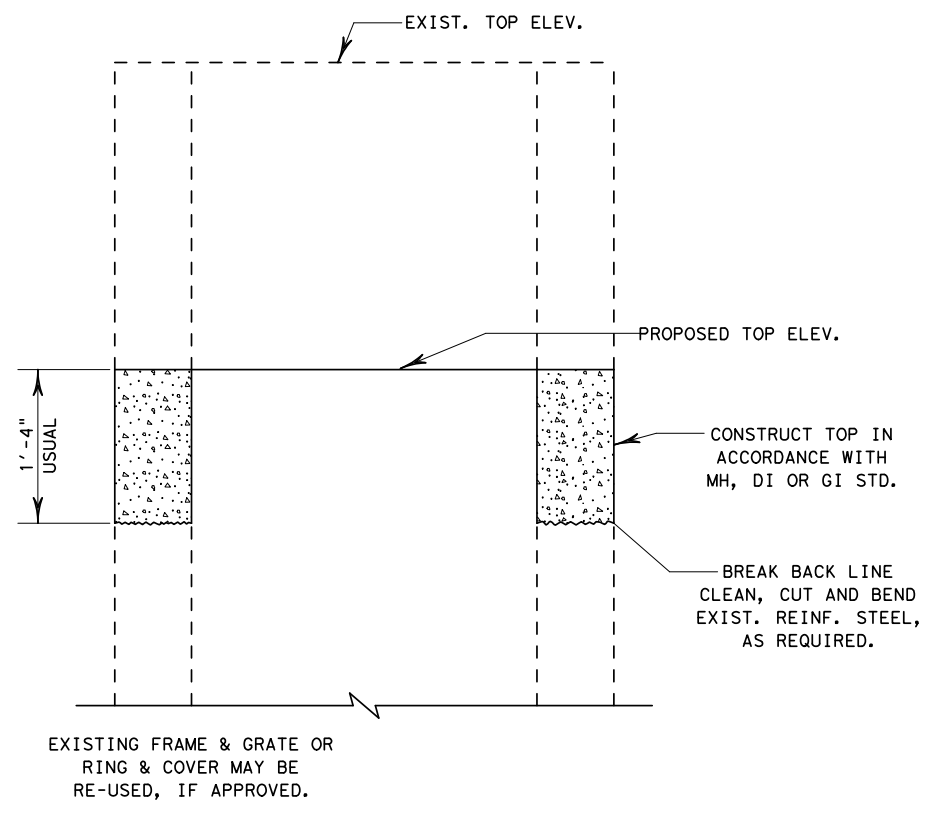
LEVELS DISPLAYED	6
1	



VERTICAL EXTENSIONS
< 2'-0"

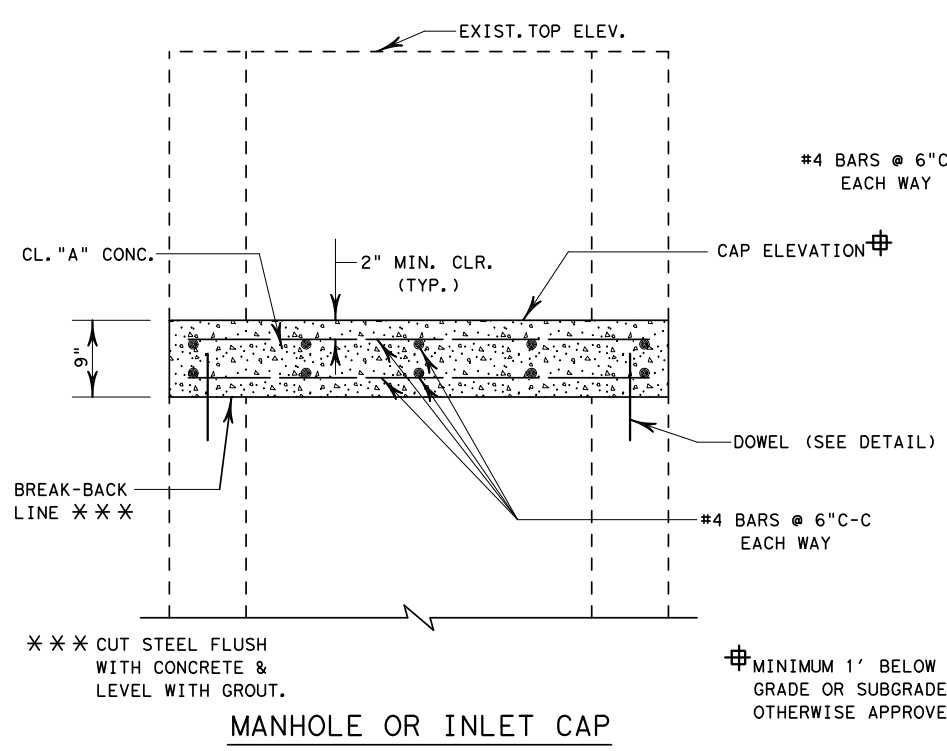


VERTICAL EXTENSIONS
> 2'-0"

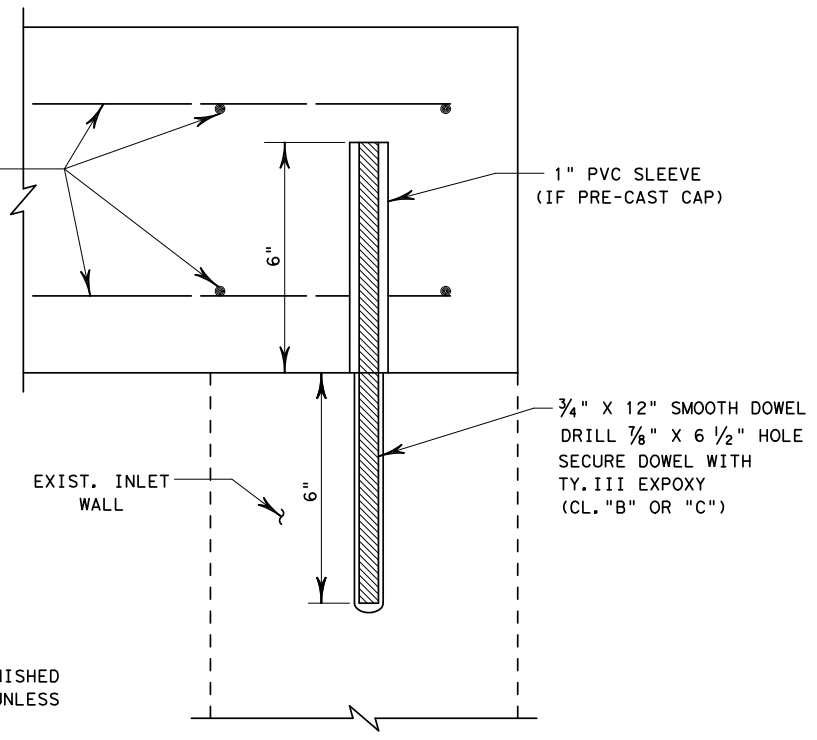


VERTICAL REDUCTION

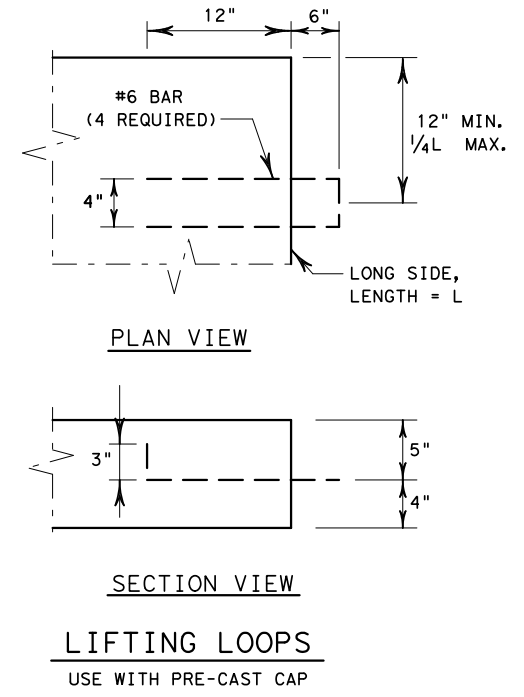
MANHOLE AND INLET ADJUSTMENT DETAILS



MANHOLE OR INLET CAP



DOWEL DETAIL
MIN. - 4 EA. - PLACED AT CORNERS OF INLET OR MANHOLE FOR CURB INLETS, PLACE AT CORNERS AND AT 5'± C-C ALONG WALLS



LIFTING LOOPS
USE WITH PRE-CAST CAP

GENERAL NOTES
ALL CONCRETE SHALL BE CLASS A.
MANHOLE AND INLET CAPS MAY BE PRE-CAST OR CAST-IN-PLACE. IF CAST-IN-PLACE, PERMANENT METAL DECK FORMS (PMDF) MAY BE USED. THE METHOD OF SUPPORTING PMDF TO BE APPROVED IN WRITING

Texas Department of Transportation
FORT WORTH DISTRICT
MANHOLE AND INLET ADJUSTMENT AND CAP DETAILS
MIAC-08 (FW)

ORIGINAL DRAWING	FED. RDJ DIV. NO.	PROJECT NO.	SHEET NO.
JUNE 2008	6		
REVISIONS:	STATE	DIST.	COUNTY
	TEXAS		
	CONT.	SECT.	JOB HIGHWAY NO.

MANHOLE AND INLET CAP DETAILS