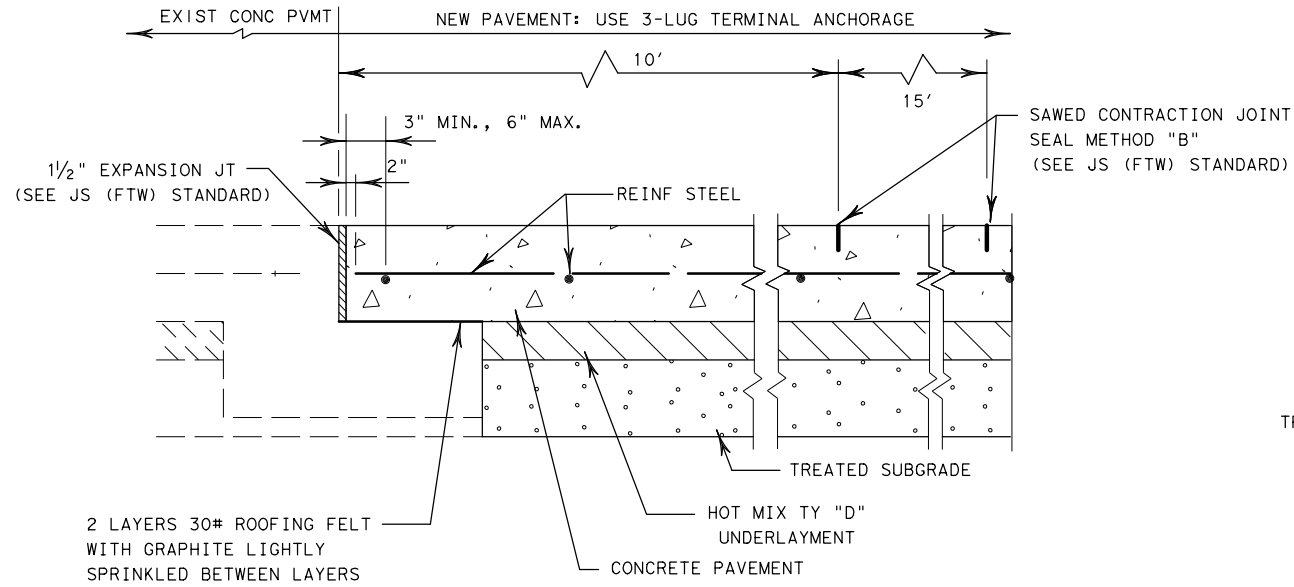


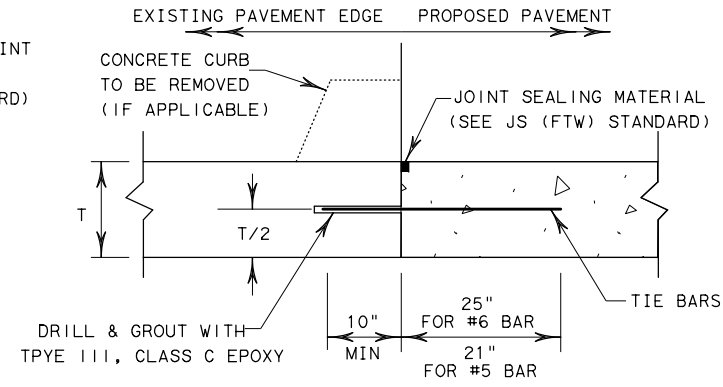
DISCLAIMER: THIS STANDARD IS COVERED BY THE "TEXAS ENGINEERING PRACTICE ACT". NO WARRANTY OF ANY KIND IS MADE BY TXDOT FOR ANY PURPOSE WHATSOEVER. TXDOT ASSUMES NO RESPONSIBILITY FOR THE CONVERSION OF THIS STANDARD TO OTHER FORMATS OR FOR INCORRECT RESULTS OR DAMAGES RESULTING FROM ITS USE.

http://www.dot.state.tx.us/ftw/specinfo/standard.htm
 11/10/2020 10:13:34 AM
 P:\PROJECTS\TXDOT\16121\5 FTW Standards Revision\CADD\Modifications in Progress\cptep-ftw.dgn



TIE TO EXIST. CONCRETE PAVEMENT

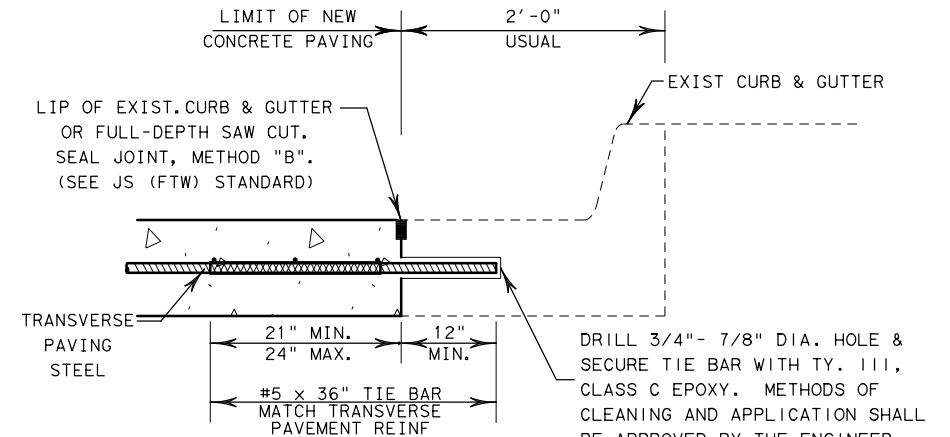
(TRANSVERSE JOINTS W/EXISTING "SLEEPER" SLAB)
 N. T. S.



1. BEFORE WIDENING WORK, DEMONSTRATE THAT THE BOND STRENGTH OF THE EPOXY-GROUTED TIE BARS MEETS THE REQUIRMENTS OF PULL-OUT TEST SPECIFIED IN ITEM 361.
2. SPACE TIE BARS AT 24" SPACING. USE #6 TIE BARS FOR 8" AND THICKER SLABS, USE #5 TIE BARS FOR LESS THAN 8" THICK SLABS.

LONGITUDINAL WIDENING JOINT DETAIL

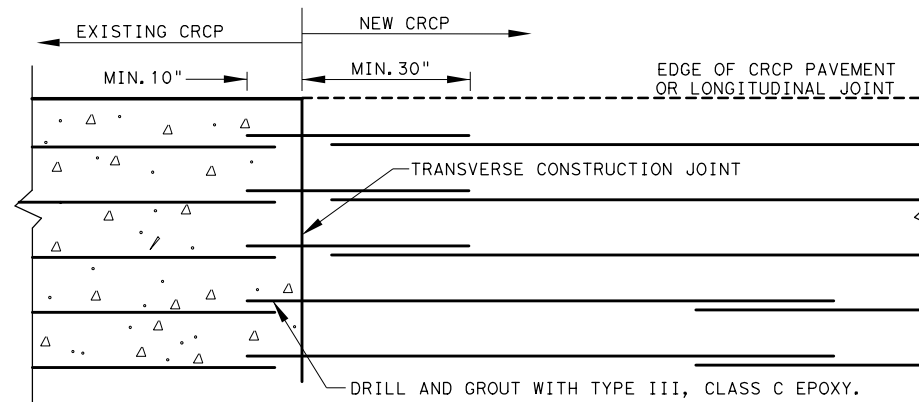
N. T. S.



TIE TO EXIST. CONC. CURB & GUTTER

N. T. S.

NOTE:
 SAWING OF PAVEMENT AND REMOVAL OF EXISTING CONC. WILL NOT BE PAID FOR DIRECTLY, BUT WILL BE SUBSIDIARY TO THE VARIOUS BID ITEMS.



NOTE:
 TIE BAR SIZE AND SPACING TO MATCH LONGITUDINAL REINFORCING. FOR LONGITUDINAL BAR SIZE AND SPACING, REFER TO CONCRETE PAVEMENT STANDARDS.

IF, IN THE OPINION OF THE ENGINEER, THE LENGTH OF AREA OF NEW PAVEMENT DOES NOT WARRANT STAGGERED LAPPING AS SHOWN, THIS REQUIREMENT MAY BE WAIVED.

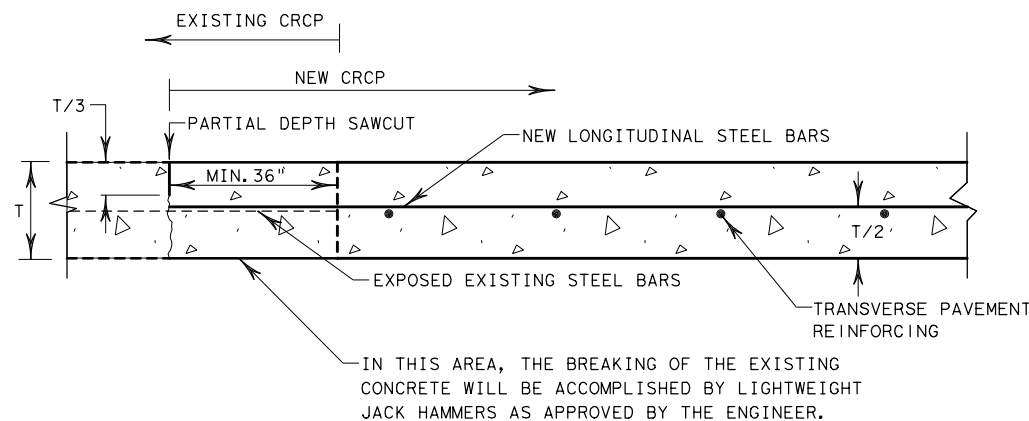
GENERAL NOTES

TIE BARS SHALL BE SECURED INTO THE EXISTING CONCRETE THE MINIMUM LENGTHS SHOWN, USING TY III EPOXY, CLASS "C" AND MUST MEET THE REQUIREMENTS OF THE PULL-OUT TEST SPECIFIED IN ITEM 361.

ALL HOLES FOR TIE BARS OR CONCRETE ANCHORS SHALL BE DRILLED WITH A CORE OR ROTARY DRILL. THE USE OF HAMMER DRILLS WILL NOT BE PERMITTED.

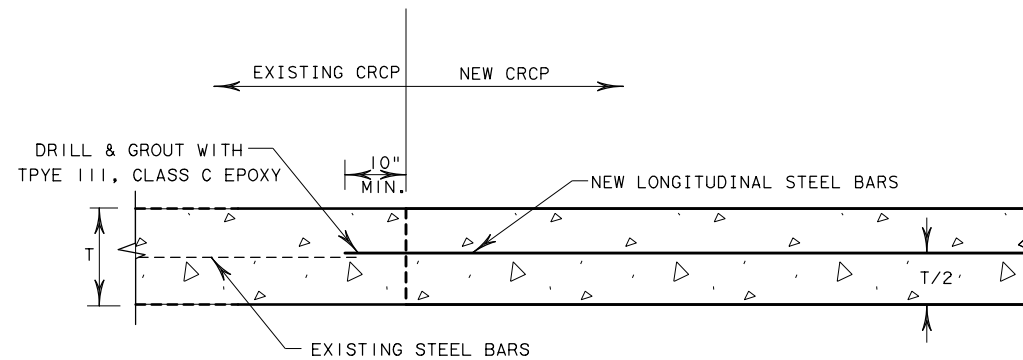
SEE JS (FTW) STANDARD FOR JOINT DETAILS.

SEE CONCRETE PAVEMENT STANDARD FOR ADDITIONAL INFORMATION



TIED TRANSVERSE CONSTRUCTION JOINT DETAIL

EXISTING CRCP TO NEW CRCP
 BREAKBACK AND LAP
 N. T. S.



TIED TRANSVERSE CONSTRUCTION JOINT DETAIL

EXISTING CRCP TO NEW CRCP
 DRILL AND EPOXY
 N.T.S.

©2020 by Texas Department of Transportation;
 All Rights Reserved

		Fort Worth District Standard	
CONCRETE PAVEMENT TIES TO EXISTING PAVEMENT CP-TEP (FTW)			
ORIGINAL DRAWING: 05/2019	cptep-ftw.dgn	FED. RD. DIV. NO. 6	PROJECT NO.
DATE	REVISIONS	STATE	DIST. NO.
05/2019	NEW STANDARD	TEXAS	FTW
06/2020	ADD LONGITUDINAL AND TRAVERSE JOINTS	CONT.	SECT.
11/2020	ADD DRILL AND EPOXY TRANSVERSE JOINT DETAIL. REVISED JOINT NOMENCLATURE. ADD REFERENCE TO CONC PAVING STANDARDS	JOB	HIGHWAY NO.
		SHEET NO.	