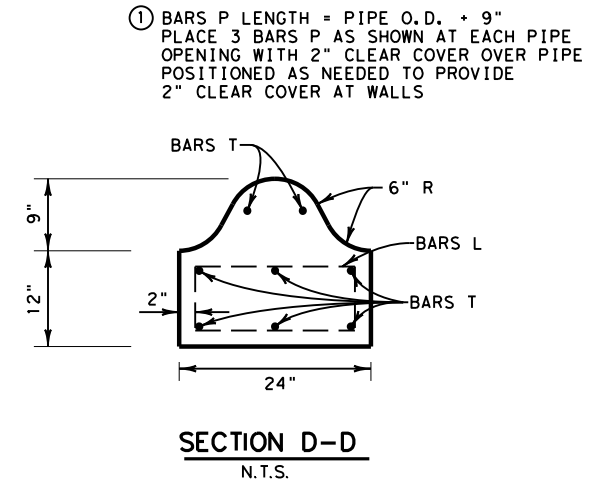
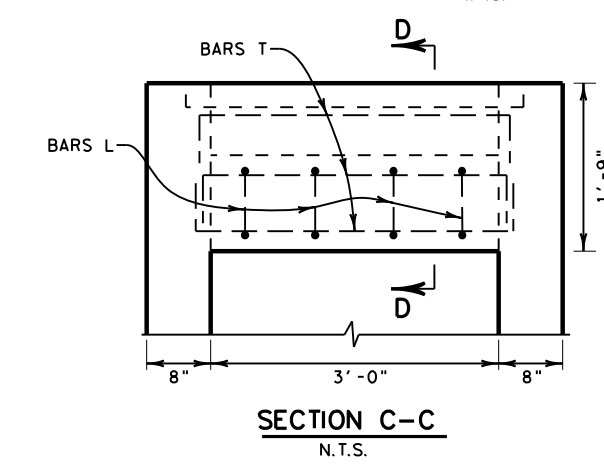
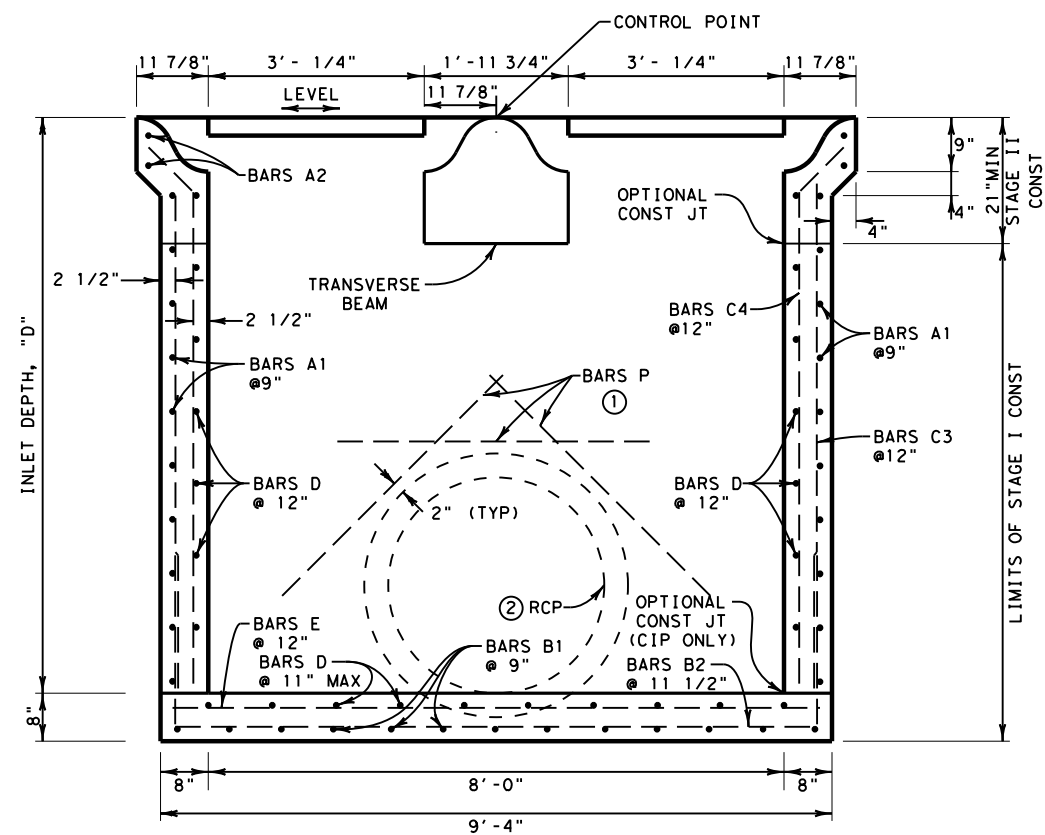
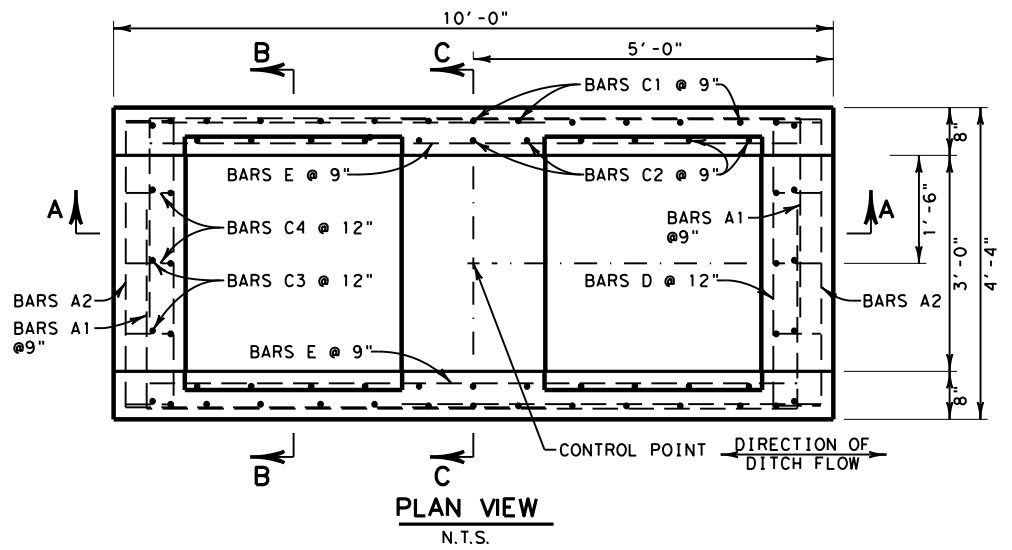


DISCLAIMER: THE USE OF THIS STANDARD IS GOVERNED BY THE TEXAS ENGINEERING PRACTICE ACT. NO WARRANTY OF ANY KIND IS MADE BY TxDOT FOR ANY PURPOSE WHATSOEVER. TxDOT ASSUMES NO RESPONSIBILITY FOR THE CONVERSION OF THIS STANDARD TO OTHER FORMATS OR FOR INCORRECT RESULTS OR DAMAGES RESULTING FROM ITS USE.

http://www.dot.state.tx.us/ftw/specinfo/standard.htm
 9/3/2019 4:38:32 PM
 I:\GEN\DESIGN\District Hydraulics\Inlet Standards Update\100% website\drainage\i02-ftw.dgn



BILL OF REINFORCING STEEL

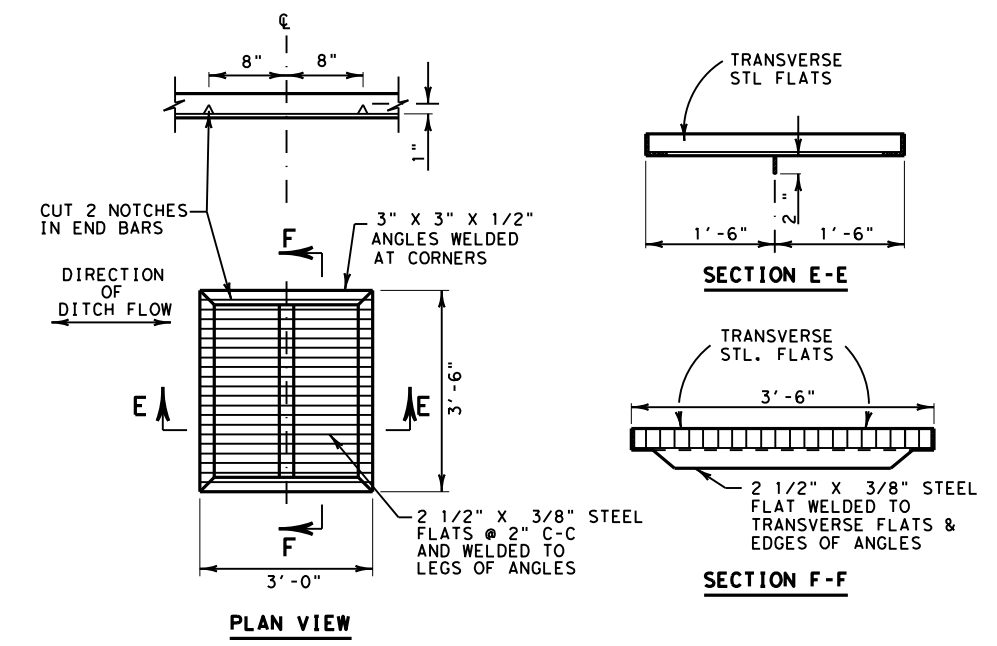
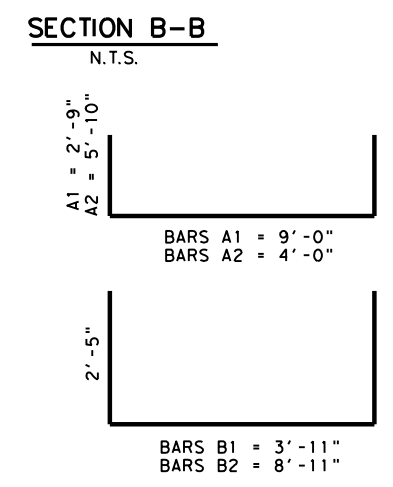
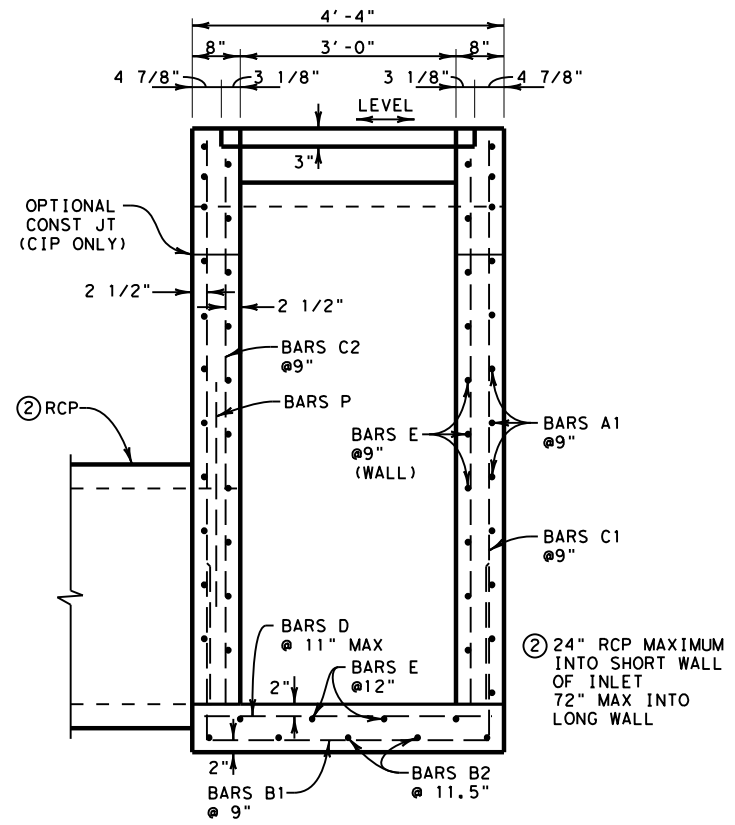
Depth "D"	Bars A1			Bars A2			Bars B1			Bars B2		
	#4	at 9" Spa	Wt	#4	at 9" Spa	Wt	#4	at 9" Spa	Wt	#4	at 12" Spa	Wt
(ft)	No	Length		No	Length		No	Length		No	Length	
4.0	10	14.500	97	4	15.667	42	13	8.750	76	5	13.750	46

Depth "D"	Bars C1			Bars C2			Bars C3			Bars C4		
	#4	at 9" Spa	Wt	#4	at 9" Spa	Wt	#4	at 12" Spa	Wt	#4	at 12" Spa	Wt
(ft)	No	Length		No	Length		No	Length		No	Length	
4.0	22	3.833	56	22	3.583	53	10	3.083	21	10	3.875	26

Depth "D"	Bars D			Bars E			Bars L			Bars T		
	#4	at 12" Spa	Wt	#4	at 9" Spa	Wt	#4	at 12" Spa	Wt	#4	at 12" Spa	Wt
(ft)	No	Length		No	Length		No	Length		No	Length	
4.0	18	4.000	48	16	9.000	96	4	5.500	15	8	5.167	28

SUMMARY OF QUANTITIES

Depth "D"	Total Reinf	Steel Qty Adjust.	Class "C" Concrete	Concrete Qty
	Weight (Lb)	P.L.F. (Lb)	(CY)	P.L.F. (CY)
(ft)				
4.0	603	90.0	3.76	0.61



- GENERAL NOTES**
- DESIGNED FOR HL 93 LOADING. TYPE AD-2 INLETS ARE NOT INTENDED FOR USE IN AREAS DESIGNATED FOR TRAFFIC OR PEDESTRIAN ACCESS. INLETS MAY BE USED IN DITCHES LOCATED WITHIN THE ROADWAY CLEAR ZONE.
 - INLETS MUST BE CAST-IN-PLACE, OR PRECAST AS A SINGLE, COMPLETE UNIT. FOR PRECAST STRUCTURES, SUBMIT SEALED ENGINEERING CALCULATIONS AND DRAWINGS FOR APPROVAL PRIOR TO FABRICATION. AT THE CONTRACTOR'S OPTION, STAGE I MAY BE PRECAST WITH REINFORCING STEEL AS DETAILED HEREON, AND STAGE II CAST-IN-PLACE.
 - USE CLASS "C" CONCRETE FOR CAST-IN-PLACE STRUCTURES; USE CLASS "H" (MINIMUM 5000 PSI DESIGN STRENGTH) CONCRETE FOR PRECAST STRUCTURES.
 - USE GRADE 60 STEEL FOR ALL REINFORCING.
 - DIMENSIONS RELATING TO REINFORCING STEEL ARE TO THE CENTERS OF BARS.
 - FIELD CUT OR BEND BARS AS NECESSARY TO ACCOMMODATE STORM DRAIN PIPE.
 - FABRICATE GRATES FROM WELDED STEEL, IN ACCORDANCE WITH ITEM 471.
 - LOCATION OF INLET AS SHOWN IN THE PLANS REFERS TO THE CONTROL POINT SHOWN ON THIS SHEET.
 - CONSTRUCT INLET WITH LEVEL TOP, TO ALIGN WITH DITCHES OR AS DIRECTED. ALIGN INLET SO THAT GRATE VANES ARE PARALLEL TO DITCH FLOW.
 - MAXIMUM DEPTH FOR TYPE AD-2 INLET IS 15'; CONSTRUCTION JOINTS MAY BE PLACED AT 5' INTERVALS.
 - FOR PIPE CONNECTIONS TO PRECAST STRUCTURES, SEE STANDARD PBGC.

Texas Department of Transportation
 Fort Worth District Standard

**AREA-DITCH INLET
 2-GRATE UNIT
 I-AD-2 (FTW)**

ORIGINAL DRAWING: 05/2019	i02-ftw.dgn	FED. RD. DIV. NO.	PROJECT NO.	SHEET NO.
DATE	REVISIONS	6		
05/2019	REPLACES D1-3-02(FW)	STATE	COUNTY	
		TEXAS	FTW	
		CONT.	SECT.	JOB
				HIGHWAY NO.