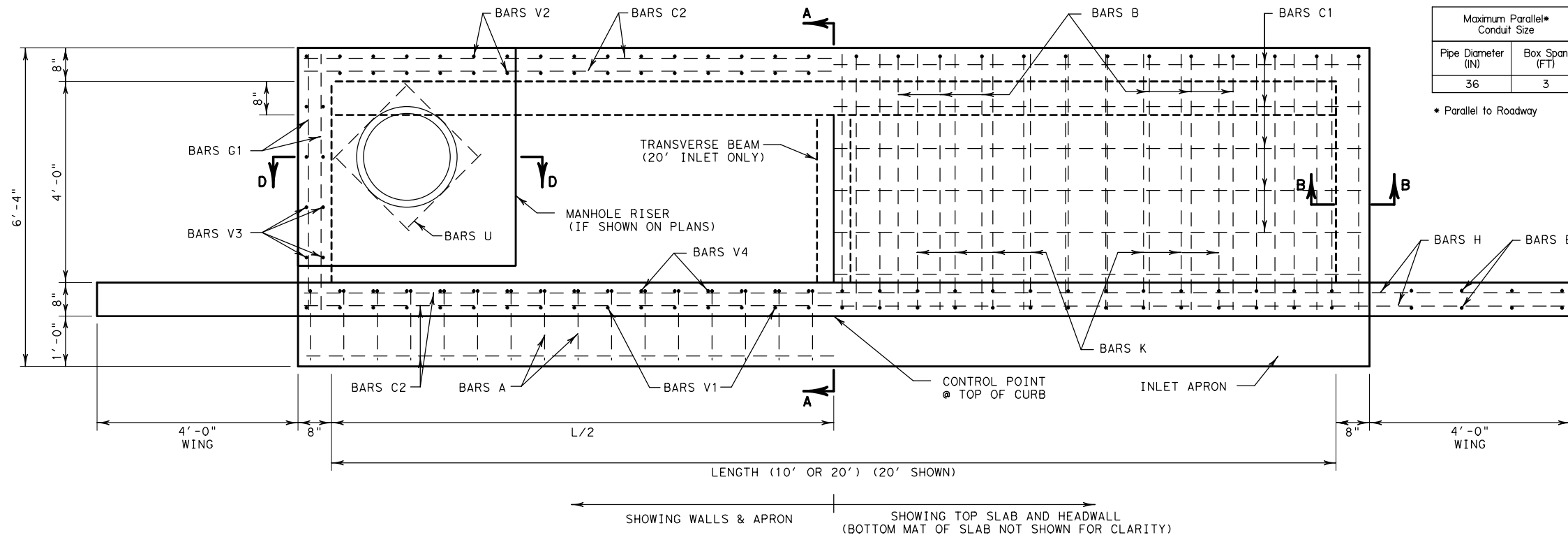


DISCLAIMER: THIS STANDARD IS COVERED BY THE "TEXAS ENGINEERING PRACTICE ACT". NO WARRANTY OF ANY KIND IS MADE BY TXDOT FOR ANY PURPOSE WHATSOEVER. TXDOT ASSUMES NO RESPONSIBILITY FOR THE CONVERSION OF THIS STANDARD TO OTHER FORMATS OR FOR INCORRECT RESULTS OR DAMAGES RESULTING FROM ITS USE.

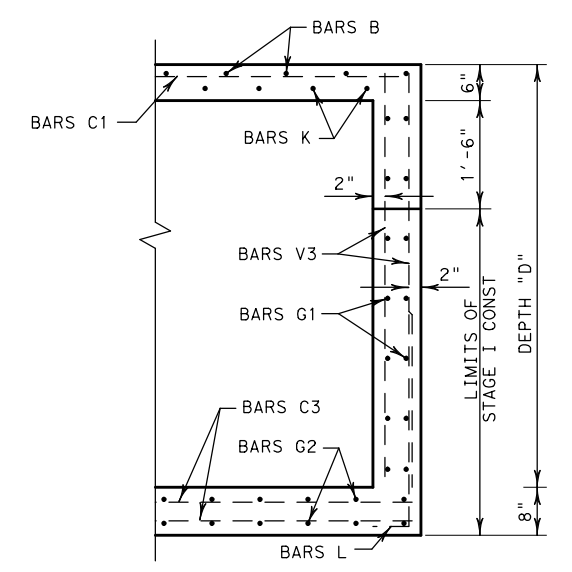
https://www.dot.state.tx.us/ftw/specinfo/standard.htm
 9/6/2022 12:38:56 PM
 I:\GROUPS\00_KATY\PROJECTS\TXDOT16121\5 FTW Standards Revision\CADD\SWA1\ich-ftw.dgn



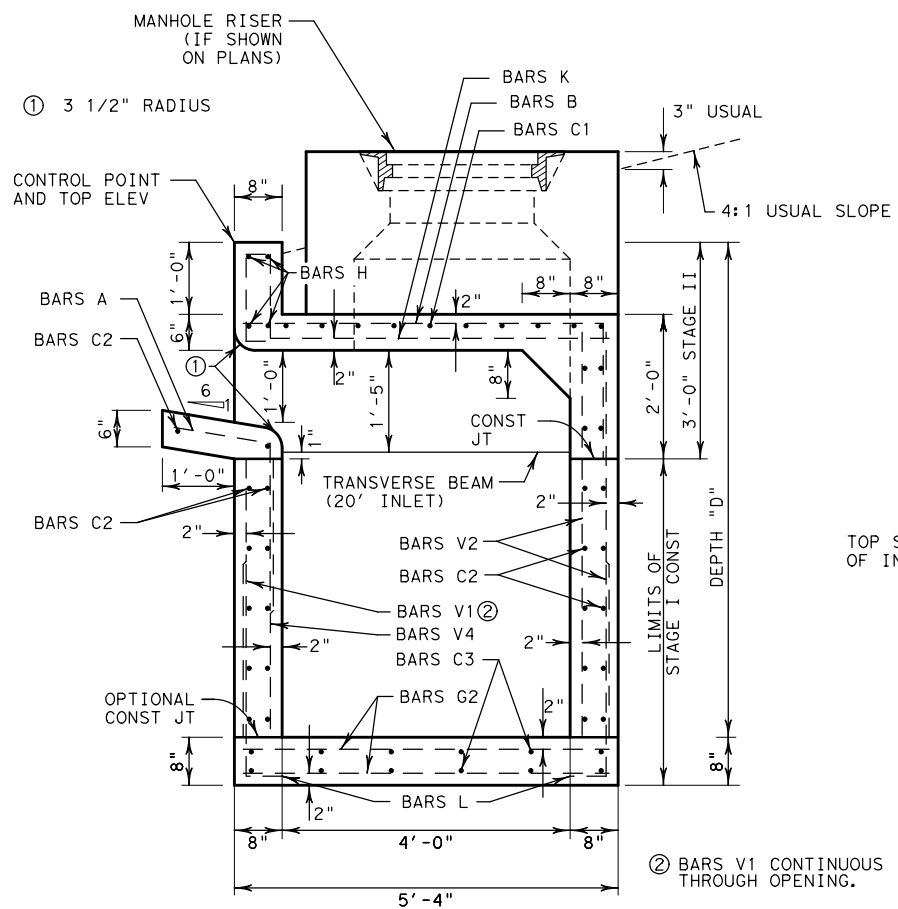
PLAN VIEW
N. T. S.

Maximum Parallel* Conduit Size	
Pipe Diameter (IN)	Box Span (FT)
36	3

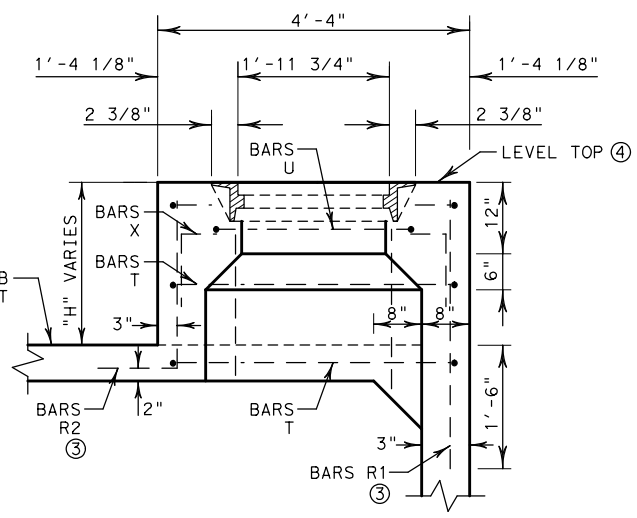
* Parallel to Roadway



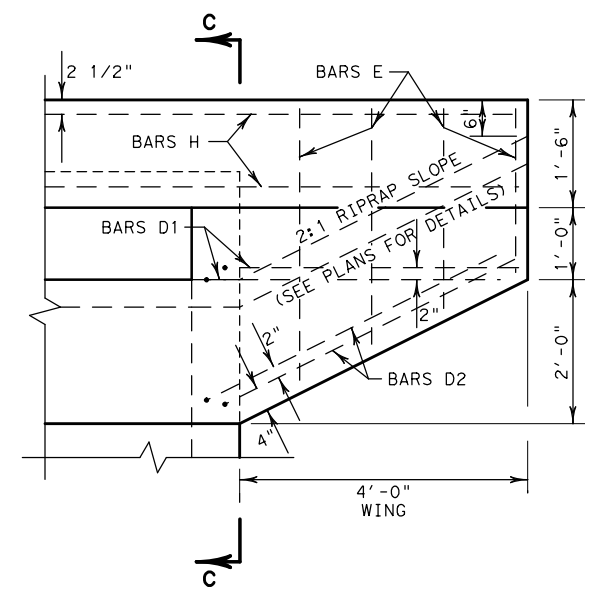
SECTION "B-B"
N. T. S.



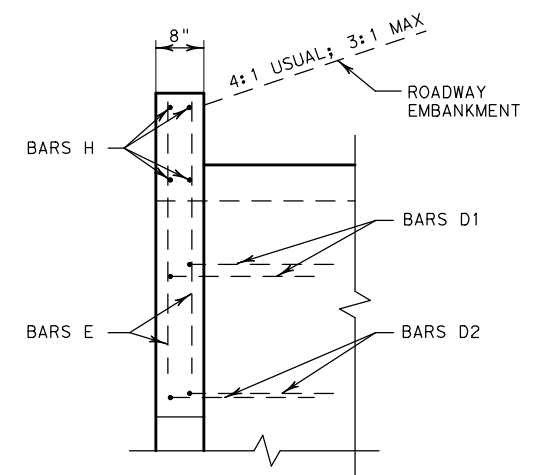
SECTION "A-A"
N. T. S.



SECTION "D-D"
N. T. S.



WING ELEVATION
N. T. S.



SECTION "C-C"
N. T. S.

- ③ BARS R1 IN RISER WALLS OVER INLET WALLS; BARS R2 IN RISER WALLS TIED TO TOP SLAB.
- ④ IF LOCATED IN SIDEWALK, MATCH SLOPE.
- ⑤ IF MANHOLE SHOWN ON PLANS.

SEE SHEET 2 OF 2 FOR GENERAL NOTES

SHEET 1 OF 2 SHEETS

		Fort Worth District Standard	
<h2>CHANNEL - HEADWALL INLET I-CH (FTW)</h2>			
ORIGINAL DRAWING: 05/2019	ich-ftw.dgn	FED. RD. DIV. NO. 6	PROJECT NO.
DATE	REVISIONS	STATE DIST. NO. TEXAS	COUNTY FTW
05/2019	REPLACES CH1-02 (FTW)	CONT.	SECT.
08/2022	ADD MAX CONDUIT SIZE TABLE ADD MANHOLE ACCESS	JOB	HIGHWAY NO.

DISCLAIMER: THIS STANDARD IS GOVERNED BY THE "TEXAS ENGINEERING PRACTICE ACT". NO WARRANTY OF ANY KIND IS MADE BY TXDOT FOR ANY PURPOSE WHATSOEVER. TXDOT ASSUMES NO RESPONSIBILITY FOR THE CONVERSION OF THIS STANDARD TO OTHER FORMATS OR FOR INCORRECT RESULTS OR DAMAGES RESULTING FROM ITS USE.

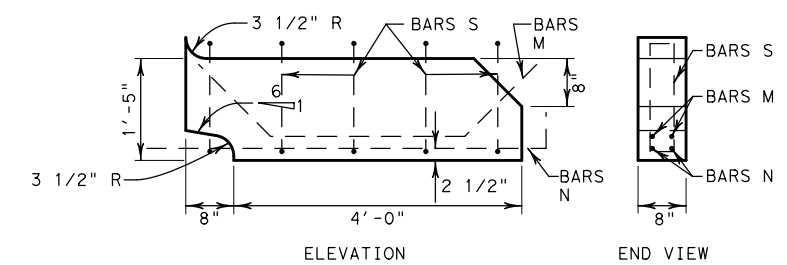
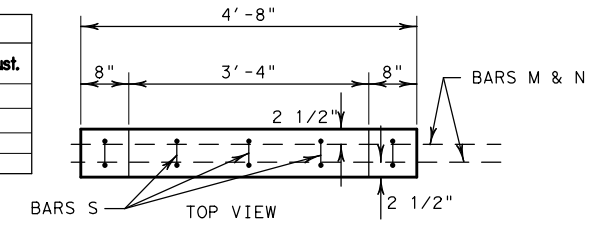
http://www.dot.state.tx.us/ftw/specinfo/standard.htm
 8/31/2022 10:09:38 AM
 I:\GROUPS\00_KATY\PROJECTS\TXDOT16121\5 FTW Standards Revision\CADD\SWA1\ich-ftw.dgn

BILL OF REINFORCING STEEL FOR "D" = 5' AND "H" = 2'																														
Length "L"	Bars A			Bars B			Bars C1			Bars C2			Bars C3			Bars D1		Bars D2		Bars E		Bars G1		Bars G2						
	#4	Length	Wt	#4	Length	Wt	#5	Length	Wt	#5	Length	Wt	#5	Length	Wt	#4	Length	Wt	#4	Length	Wt	#5	Length	Wt	#5	Length	Wt			
10.0	18	3,686	44	15	6,833	68	9	11,000	103	23	11,000	264	6	11,000	69	2	6,083	8	2	6,500	9	16	3,000	32	24	5,000	125	36	5,000	188
20.0	33	3,686	81	27	6,833	123	9	21,000	197	23	21,000	504	6	21,000	131	2	6,083	8	2	6,500	9	16	3,000	32	24	5,000	125	66	5,000	344

BILL OF REINFORCING STEEL FOR "D" = 5' AND "H" = 2' (CONTINUED)																											
Length "L"	Bars H		Bars K				Bars L		Bars M		Bars N		Bars R1 *		Bars R2 *		Bars S		Bars T *		Bars U *						
	#4	Length	Wt	No	Length	Wt	No	Length	Wt	No	Length	Wt	No	Length	Wt	No	Length	Wt	No	Length	Wt	No	Length	Wt			
10.0	4	19,000	51	15	7,750	78	45	3,750	176	0	5,537	0	0	6,333	20	7	3,333	16	0	4,333	0	3	17,000	34	4	2,500	7
20.0	4	29,000	77	28	7,750	145	79	3,750	309	2	5,537	7	2	6,333	8	9	3,333	16	5	4,333	14	3	17,000	34	4	2,500	7

BILL OF REINFORCING STEEL FOR "D" = 5' AND "H" = 2' (CONTINUED)																SUMMARY OF QUANTITIES			
Length "L"	Bars V1			Bars V2			Bars V3			Bars V4			Bars X *		Total Reinf Steel Weight	Steel Qty Adjust. PLF. of "D"	Class "C" Concrete [CY]	Concrete Qty Adjust. PLF. of "D"	
	#5	Length	Wt	#5	Length	Wt	#5	Length	Wt	#5	Length	Wt	#4	Length	Wt	[Lb]	[Lb]	[CY]	[CY]
10.0	22	5,000	115	34	4,833	171	16	4,833	81	11	3,000	34	16	1,583	17	1,605	223	8.7	0.52
20.0	42	5,000	219	64	4,833	323	16	4,833	81	21	3,000	66	16	1,583	17	2,748	385	14.2	1.01

* OMIT BARS IF NO MANHOLE PROVIDED

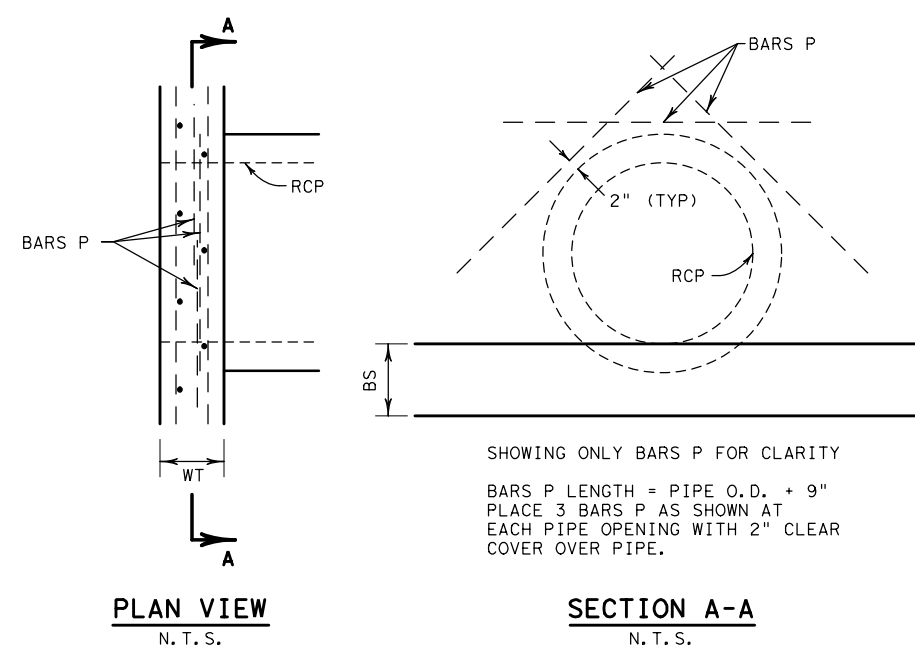
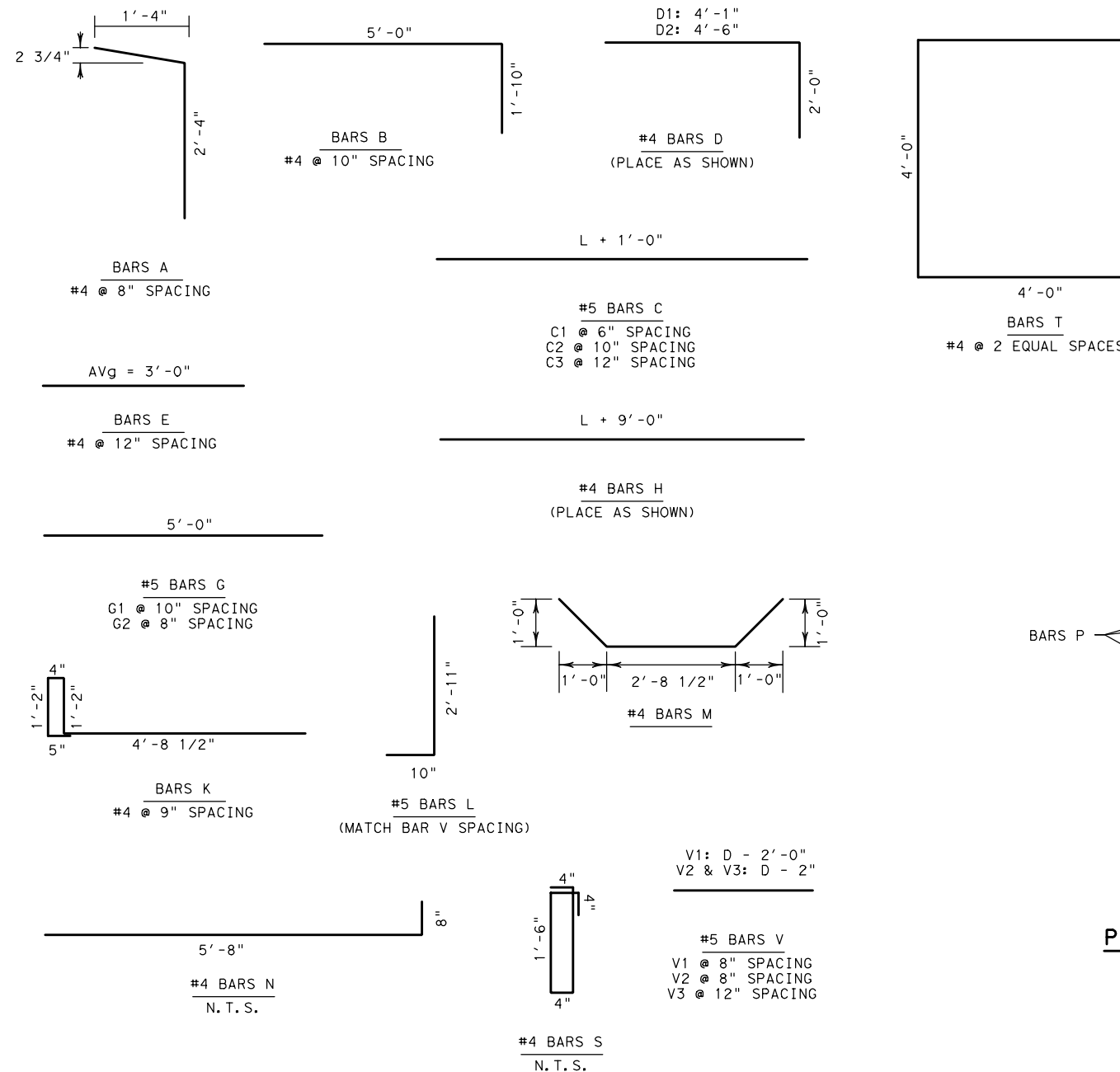


TRANSVERSE BEAM DETAIL
N. T. S.

GENERAL NOTES

- DESIGNED FOR AASHTO LRFD HL 93 LOADING
- ALL CONCRETE SHALL BE CLASS "C".
- ALL REINFORCING STEEL SHALL BE GRADE 60.
- CHANNEL HEADWALL INLETS SHALL BE ENTIRELY CAST-IN-PLACE.
- CHAMFER ALL EXPOSED CORNERS 3/4", EXCEPT WHERE NOTED OTHERWISE.
- DIMENSIONS RELATING TO REINFORCING STEEL ARE TO THE CENTERS OF BARS.
- FIELD CUT OR BEND BARS AS NECESSARY TO ACCOMMODATE STORM DRAIN PIPE.
- DEPTHS OTHER THAN THOSE SHOWN MAY BE USED WHENEVER NECESSARY, UP TO A MAXIMUM DEPTH OF 10'. QUANTITIES FOR OTHER DEPTHS MAY BE DETERMINED BY INTERPOLATION.
- THE LOCATION OF INLET AS SHOWN IN THE PLAN REFERS TO THE CONTROL POINT AT THE FACE OF HEADWALL AND MID-POINT OF THE INLET.
- FABRICATE CAST IRON RING AND COVER CONFORMING TO ITEM 471. SEE MISCELLANEOUS DRAINAGE DETAILS FOR RING AND COVER DETAILS.
- PROVIDE MANHOLE IF SHOWN ON PLANS.
- MANHOLE LOCATED AT OUTFALL END OF INLET OR AS DIRECTED.

SHEET 2 OF 2 SHEETS



PLAN VIEW
N. T. S.

SECTION A-A
N. T. S.

SUPPLEMENTAL REINFORCEMENT RCP CONNECTION - (CAST-IN-PLACE ONLY)

©2022 by Texas Department of Transportation; All Rights Reserved

		Fort Worth District Standard	
<h2>CHANNEL - HEADWALL INLET I-CH (FTW)</h2>			
ORIGINAL DRAWING: 05/2019	ich-ftw.dgn	FED. RD. DIV. NO.:	PROJECT NO.:
DATE:	REVISIONS:	6	
05/2019	DESCRIPTION:	STATE:	COUNTY:
08/2022	ADD MAX CONDUIT SIZE TABLE ADD MANHOLE ACCESS	TEXAS	FTW
		CONT.:	SECT.:
		JOB:	HIGHWAY NO.: