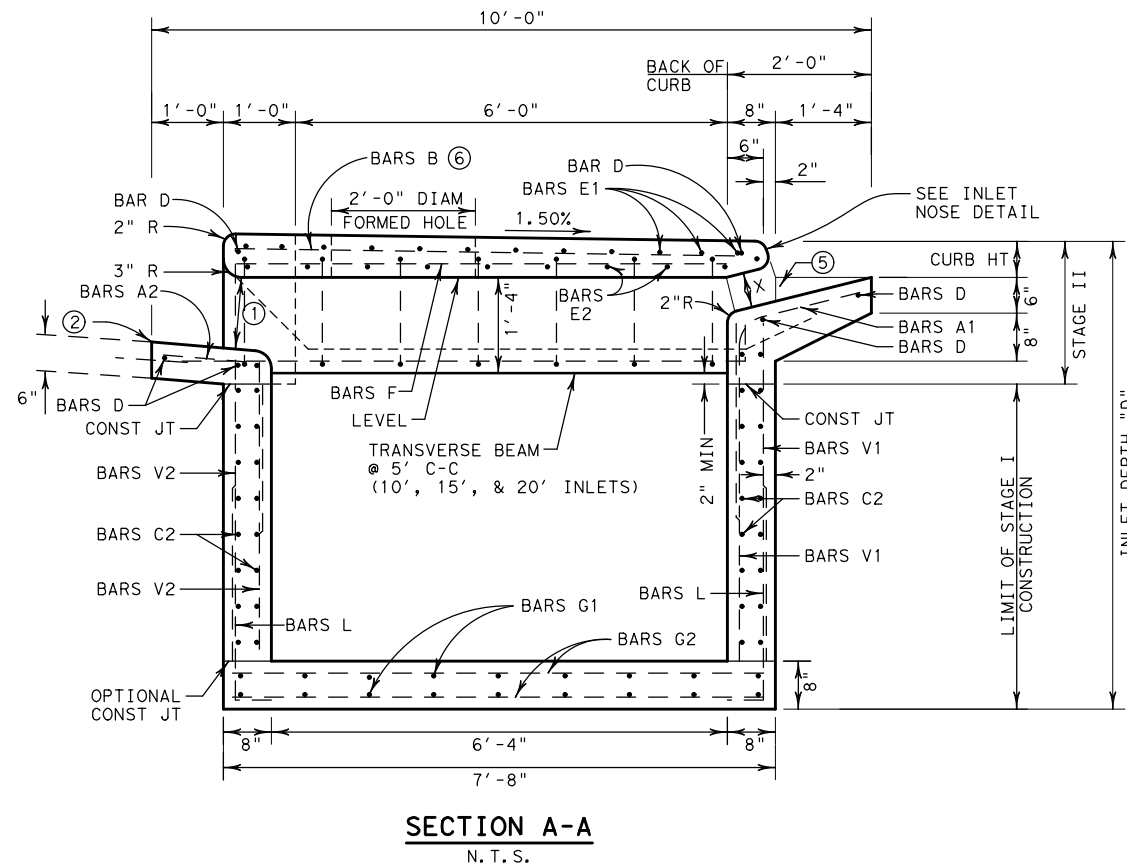
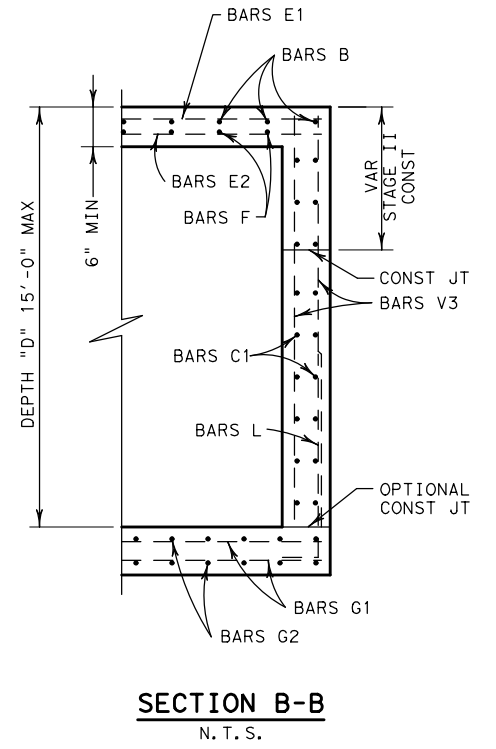
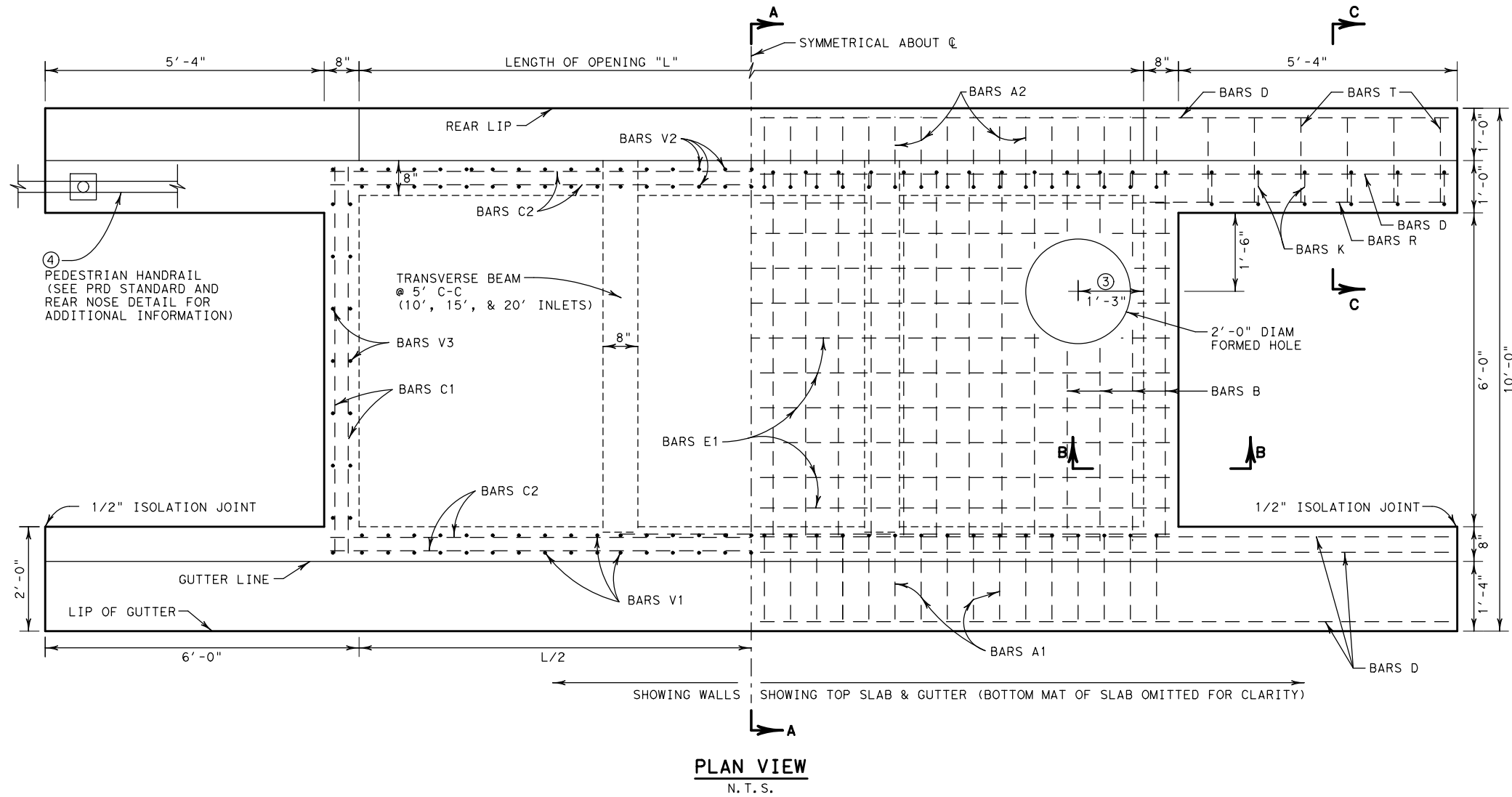


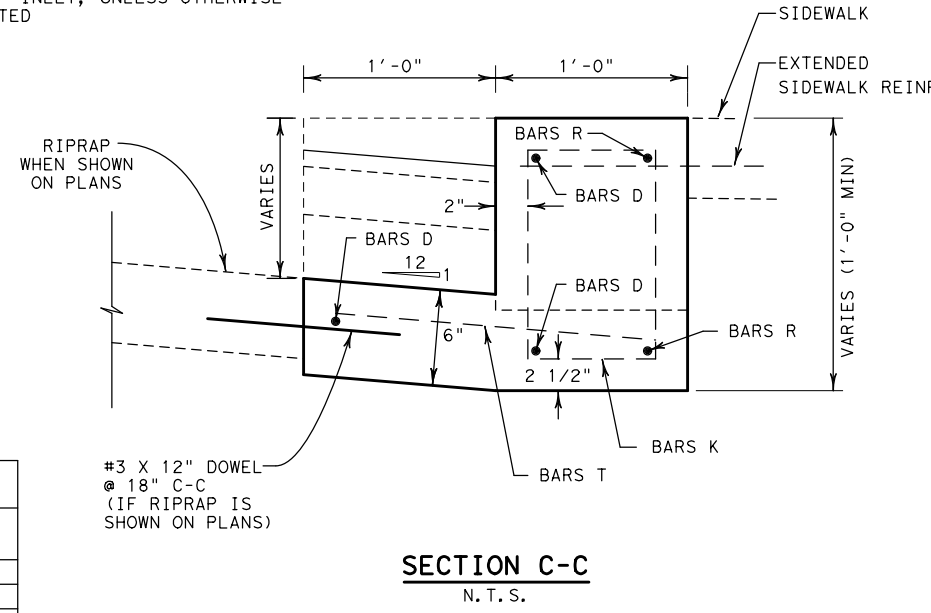
DISCLAIMER: THIS STANDARD IS COVERED BY THE "TEXAS ENGINEERING PRACTICE ACT". NO WARRANTY OF ANY KIND IS MADE BY TxDOT FOR ANY PURPOSE WHATSOEVER. TxDOT ASSUMES NO RESPONSIBILITY FOR THE CONVERSION OF THIS STANDARD TO OTHER FORMATS OR FOR INCORRECT RESULTS OR DAMAGES RESULTING FROM ITS USE.

http://www.dot.state.tx.us/ftw/specinfo/standard.htm  
 11/6/2020 11:07:26 AM  
 P:\PROJECTS\TXDOT\16121\5 FTW Standards Revision\CADD\Modifications in Progress\1cob-ftw.dgn



THROAT DIMENSION	
CURB HEIGHT	"X"
5"	5"
6"	5 7/8"
7"	6 1/4"
8"	6 1/2"

- ① 12" OPENING AT MIDPOINT OF INLET
- ② REAR LIP AT CONSTANT ELEVATION ACROSS OPENING
- ③ PLACE RING & COVER AT OUTFALL END OF INLET, UNLESS OTHERWISE DIRECTED
- ④ HANDRAIL REQUIRED IF SIDEWALK IS PRESENT
- ⑤ 4" DEPRESSION AT GUTTER LINE
- ⑥ BARS B TO BE CONTINUOUS ACROSS REAR OPENING



MAXIMUM PARALLEL * CONDUIT SIZE	
PIPE DIAMETER (IN)	BOX SPAN (FT)
60	5

\* PARALLEL TO ROADWAY

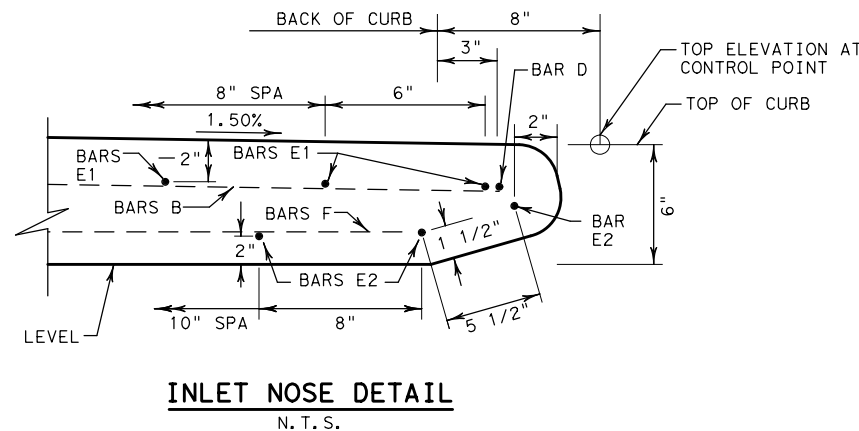
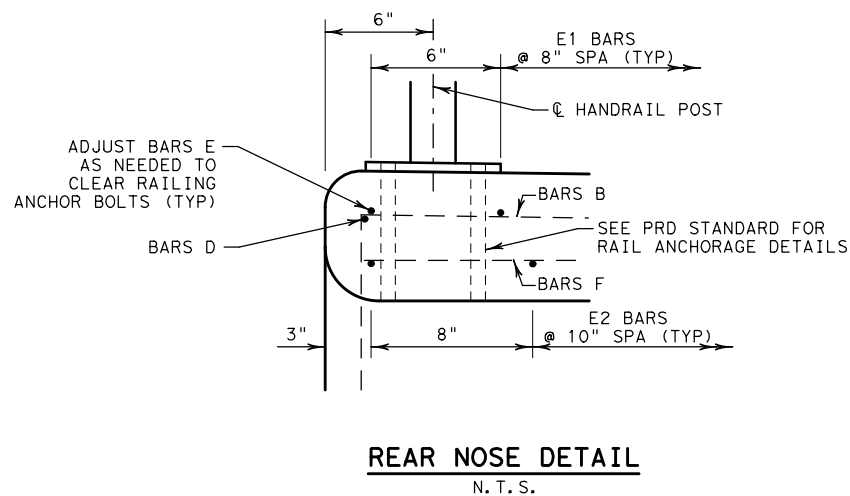
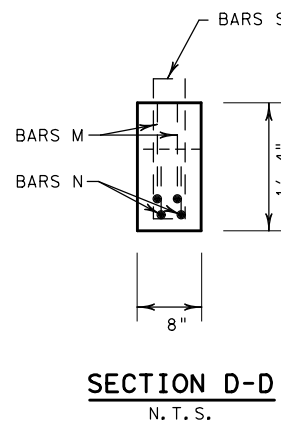
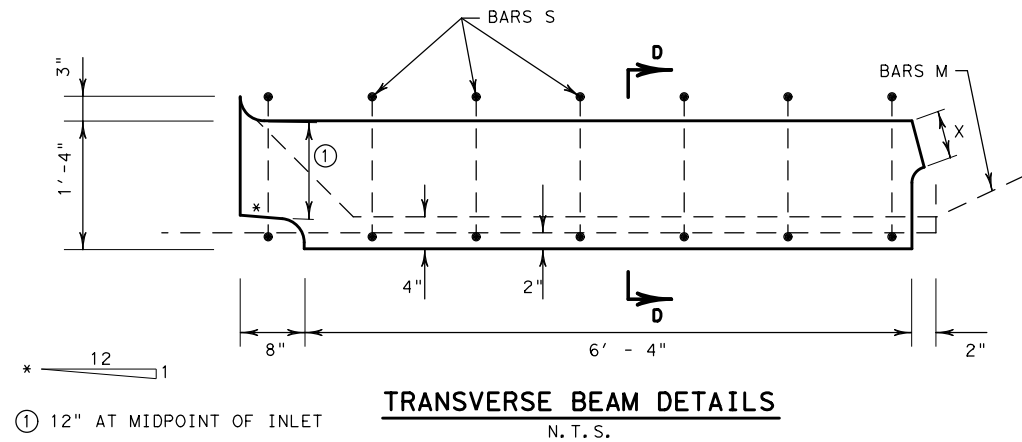
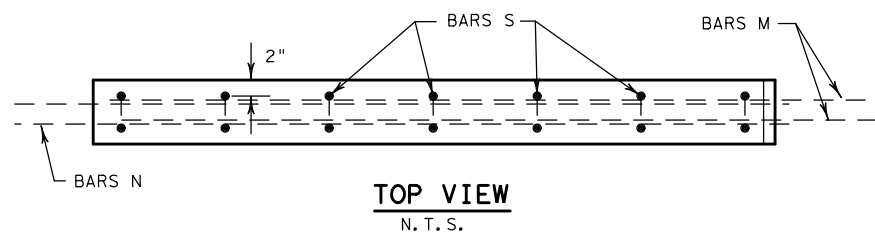
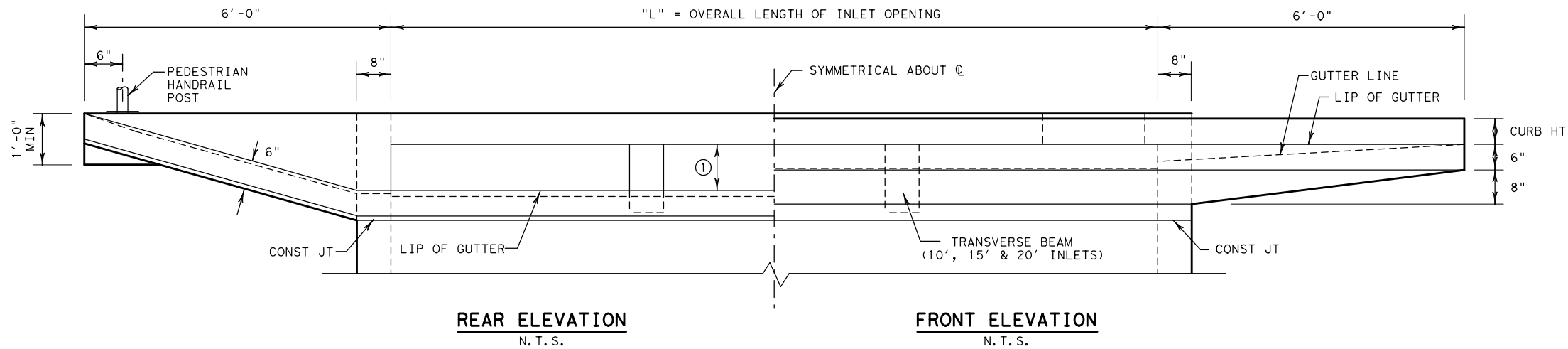
SEE SHEET 2 OF 3 FOR GENERAL NOTES.

SHEET 1 OF 3 SHEETS

		<b>Fort Worth District Standard</b>	
<h3>OPEN BACK CURB INLET FOR USE WITH TYPE II CURB I-COB (FTW)</h3>			
ORIGINAL DRAWING: 05/2019	icob-ftw.dgn	FED. RD. DIV. NO. 6	PROJECT NO.
DATE	REVISIONS	STATE	COUNTY
05/2019	NEW STANDARD	TEXAS	FTW
04/2020	ADD MAX CONDUIT SIZE TABLE	CONT.	SECT.
11/2020	REVISED JOINT NOMENCLATURE	JOB	HIGHWAY NO.

DISCLAIMER: THIS STANDARD IS GOVERNED BY THE "TEXAS ENGINEERING PRACTICE ACT". NO WARRANTY OF ANY KIND IS MADE BY TXDOT FOR ANY PURPOSE WHATSOEVER. TXDOT ASSUMES NO RESPONSIBILITY FOR THE CONVERSION OF THIS STANDARD TO OTHER FORMATS OR FOR INCORRECT RESULTS OR DAMAGES RESULTING FROM ITS USE.

http://www.dot.state.tx.us/ftw/specinfo/standard.htm  
 11/6/2020 11:07:59 AM  
 P:\PROJECTS\TXDOT\16121\5 FTW Standards Revision\CADD\Modifications in Progress\1cob-ftw.dgn



**GENERAL NOTES**

- DESIGNED ACCORDING TO AASHTO LRFD SPECIFICATIONS FOR PEDESTRIAN LOADING AND HL-93 LOADING UNDER "EXTREME EVENT II" LOAD COMBINATION.
- ALL CONCRETE FOR CAST-IN-PLACE STRUCTURES SHALL BE CLASS "C"; ALL CONCRETE FOR PRECAST STRUCTURES SHALL BE CLASS "H" (MIN 5000 PSI COMPRESSIVE STRENGTH).
- ALL REINFORCING STEEL SHALL BE GRADE 60.
- STAGE I MAY BE EITHER CAST-IN-PLACE OR PRECAST. FABRICATE PRECAST STRUCTURES USING REBAR AS DETAILED HEREON, WITH BARS A1, A2, V1 AND V3 TO BE INCLUDED WITH STAGE I. SPLICING OF BARS WILL NOT BE PERMITTED, EXCEPT AS NOTED.
- STAGE II SHALL BE CAST-IN-PLACE.
- CHAMFER ALL EXPOSED CORNERS 3/4", EXCEPT WHERE NOTED OTHERWISE.
- DIMENSIONS RELATING TO REINFORCING STEEL ARE TO THE CENTERS OF BARS.
- FIELD CUT AND BEND BARS AS NECESSARY TO ACCOMMODATE STORM DRAIN PIPE.
- FOR PIPE AND BOX CONNECTIONS TO PRECAST STRUCTURES, SEE STANDARD DETAIL SHEET PBGC.
- INSTALL RING AND COVER AT OUTFALL END OF INLET, UNLESS OTHERWISE DIRECTED. CAST IRON RING AND COVER SHALL CONFORM TO ITEM 471. SEE STANDARD MDD (FTW) FOR RING AND COVER DETAILS.
- DEPTHS OTHER THAN THOSE SHOWN MAY BE USED WHENEVER NECESSARY, UP TO A MAXIMUM DEPTH OF 15'. QUANTITIES FOR OTHER DEPTHS MAY BE DETERMINED BY INTERPOLATION.
- DO NOT COMMENCE WITH STAGE II CONSTRUCTION UNTIL CONCRETE PAVEMENT AND CURB, OR CONCRETE CURB AND GUTTER CONSTRUCTION IS COMPLETED AT THE INLET SITE.
- INSTALL A TEMPORARY WOOD COVER AFTER STAGE I IS COMPLETED, TO REMAIN IN PLACE UNTIL STAGE II CONSTRUCTION BEGINS.
- THE LOCATION OF INLET AS SHOWN IN THE PLAN REFERS TO THE CONTROL POINT AT THE FACE OF CURB AND MID-POINT OF THE INLET.
- PLACE A SEALED 1/2" ISOLATION JOINT ALONG ALL VERTICAL FACES ABUTTING CONCRETE PAVEMENT, CURB, CURB AND GUTTER, OR SIDEWALK. USE CLASS 5 OR 8 JOINT SEALANT TO SEAL THE JOINT. SEE STANDARD JS (FTW) FOR ADDITIONAL INFORMATION.

SHEET 2 OF 3 SHEETS

		<b>Fort Worth District Standard</b>	
<h2>OPEN BACK CURB INLET FOR USE WITH TYPE II CURB I-COB (FTW)</h2>			
ORIGINAL DRAWING: 05/2019	icob-ftw.dgn	FED. RD. DIV. NO. 6	PROJECT NO.
DATE	REVISIONS	STATE DIST. NO.	COUNTY
05/2019	NEW STANDARD	TEXAS	FTW
04/2020	ADD MAX CONDUIT SIZE TABLE	CONT.	SECT.
11/2020	REVISED JOINT NOMENCLATURE	JOB	HIGHWAY NO.

DISCLAIMER : THE USE OF THIS STANDARD IS GOVERNED BY THE "TEXAS ENGINEERING PRACTICE ACT". NO WARRANTY OF ANY KIND IS MADE BY TXDOT FOR ANY PURPOSE WHATSOEVER. TXDOT ASSUMES NO RESPONSIBILITY FOR THE CONVERSION OF THIS STANDARD TO OTHER FORMATS OR FOR INCORRECT RESULTS OR DAMAGES RESULTING FROM ITS USE.

https://www.dot.state.tx.us/ftw/specinfo/standard.htm  
 11/6/2020 11:08:24 AM  
 P:\PROJECTS\TXDOT\16121\5 FTW Standards Revision\CADD\Modifications in Progress\icob-ftw.dgn

**BILL OF REINFORCING STEEL FOR "D"= 4'**

Length L	Bars A1			Bars A2			Bars B			Bars C1			Bars C2			Bars D			Bars E1			Bars E2			Bars F			Bars G1		
	#4	at 6' Spa	Wt	#4	at 6' Spa	Wt	#4	at 6.0' Spa	Wt	#5	at 6' Spa	Wt	#5	at 6' Spa	Wt	#4	at 6' Spa	Wt	#5	at 8' Spa	Wt	#5	at 10' Spa	Wt	#4	at 7.5' Spa	Wt	#5	at 12' Spa	Wt
[ft]	No	Length	Wt	No	Length	Wt	No	Length	Wt	No	Length	Wt	No	Length	Wt	No	Length	Wt	No	Length	Wt	No	Length	Wt	No	Length	Wt	No	Length	Wt
5.0	13	4.323	38	13	3.667	32	13	8.917	77	28	7.417	217	19	6.000	119	6	16.667	67	12	6.000	75	10	6.000	63	9	6.802	41	18	6.000	113
10.0	23	4.323	66	23	3.667	56	23	8.917	137	28	7.417	217	19	11.000	218	6	21.667	87	12	11.000	138	10	11.000	115	17	6.802	77	18	11.000	207
15.0	33	4.323	95	33	3.667	81	33	8.917	197	28	7.417	217	19	16.000	317	6	26.667	107	12	16.000	200	10	16.000	167	25	6.802	114	18	16.000	300
20.0	43	4.323	124	43	3.667	105	43	8.917	256	28	7.417	217	19	21.000	416	6	31.667	127	12	21.000	263	10	21.000	219	33	6.802	150	18	21.000	394

**BILL OF REINFORCING STEEL FOR "D"= 4' (CONTINUED)**

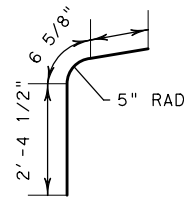
Length L	Bars G2			Bars K			Bars L			Bars M			Bars N			Bars R			Bars S			Bars T		
	#5	at 6' Spa	Wt	#3	at 12' Spa	Wt	#5	at 6' Spa	Wt	#4	at 6' Spa	Wt	#4	at 6' Spa	Wt	#4	at 6' Spa	Wt	#4	at 13' Spa	Wt	#3	at 12' Spa	Wt
[ft]	No	Length	Wt	No	Length	Wt	No	Length	Wt	No	Length	Wt	No	Length	Wt	No	Length	Wt	No	Length	Wt	No	Length	Wt
5.0	26	7.417	201	12	4.333	20	32	3.750	125	0	8.500	0	0	8.583	0	4	5.708	15	0	4.250	0	12	1.667	8
10.0	46	7.417	356	12	4.333	20	52	3.750	203	2	8.500	11	2	8.583	11	4	5.708	15	7	4.250	20	12	1.667	8
15.0	66	7.417	511	12	4.333	20	72	3.750	282	4	8.500	23	4	8.583	23	4	5.708	15	14	4.250	40	12	1.667	8
20.0	86	7.417	665	12	4.333	20	92	3.750	360	6	8.500	34	6	8.583	34	4	5.708	15	21	4.250	60	12	1.667	8

**BILL OF REINFORCING STEEL FOR "D" = 4' (CONTINUED)**

Length L	Bars V1			Bars V2			Bars V3		
	#5	at 6' Spa	Wt	#5	at 6' Spa	Wt	#5	at 12' Spa	Wt
[ft]	No	Length	Wt	No	Length	Wt	No	Length	Wt
5.0	20	2.833	59	20	2.000	42	28	3.833	112
10.0	40	2.833	118	40	2.000	83	28	3.833	112
15.0	60	2.833	177	60	2.000	125	28	3.833	112
20.0	80	2.833	236	80	2.000	167	28	3.833	112

**SUMMARY OF QUANTITIES**

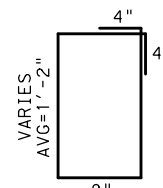
Total Reinf Weight	Steel Qty Adjust. P.L.F.	Class "C" Concrete [CY]	Concrete Qty Adjust. P.L.F.
[Lb]	[Lb]	[CY]	[CY]
1,422	182.9	6.2	0.63
2,275	266.3	9.1	0.87
3,129	349.8	12.0	1.12
3,982	433.2	14.8	1.37



BARS A1  
#4 @ 6" C-C

"L" + 11'-8"

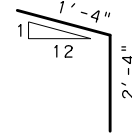
BARS D  
#4 AS SHOWN



BARS K  
#3 @ 12" C-C

5'-8 1/2"

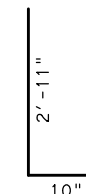
BARS R  
#4 AS SHOWN



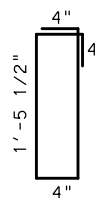
BARS A2  
#4 @ 6"

"L" + 1'-0"

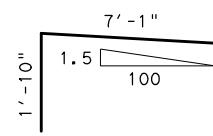
BARS E  
E1 - #5 @ 8" MAX  
E2 - #5 @ 10" MAX



BARS L  
#5 @ 6" C-C



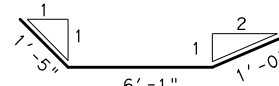
BARS S  
#4 @ 13" C-C



BARS B  
#4 @ 6" C-C

6'-9 5/8"

BARS F  
#4 @ 7.5" C-C



BARS M  
#4 AS SHOWN

1'-8"

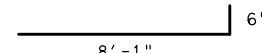
BARS T  
#3 @ 12" C-C

"L" + 1'-0"

BARS G1  
#5 @ 12" C-C

7'-5"

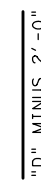
BARS G2  
#5 @ 6" C-C



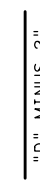
BARS N  
#4 AS SHOWN



BARS V1  
#5 @ 6" C-C



BARS V2  
#5 @ 6" C-C



BARS V3  
#5 @ 12" C-C

7'-5"

BARS C1  
#5 @ 6" C-C

"L" + 1'-0"

BARS C2  
#5 @ 6" C-C

		<b>Fort Worth District Standard</b>	
<p><b>OPEN BACK CURB INLET FOR USE WITH TYPE II CURB I-COB (FTW)</b></p>			
ORIGINAL DRAWING: 05/2019	icob-ftw.dgn	FED. RD. DIV. NO. 6	PROJECT NO.
DATE	REVISIONS	STATE	COUNTY
05/2019	NEW STANDARD	TEXAS	FTW
04/2020	ADD MAX CONDUIT SIZE TABLE	CONT.	SECT.
11/2020	REVISED JOINT NOMENCLATURE	JOB	HIGHWAY NO.