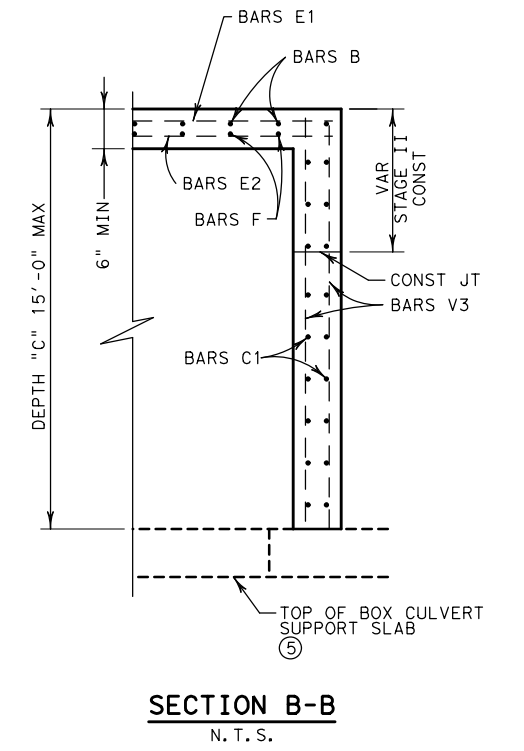
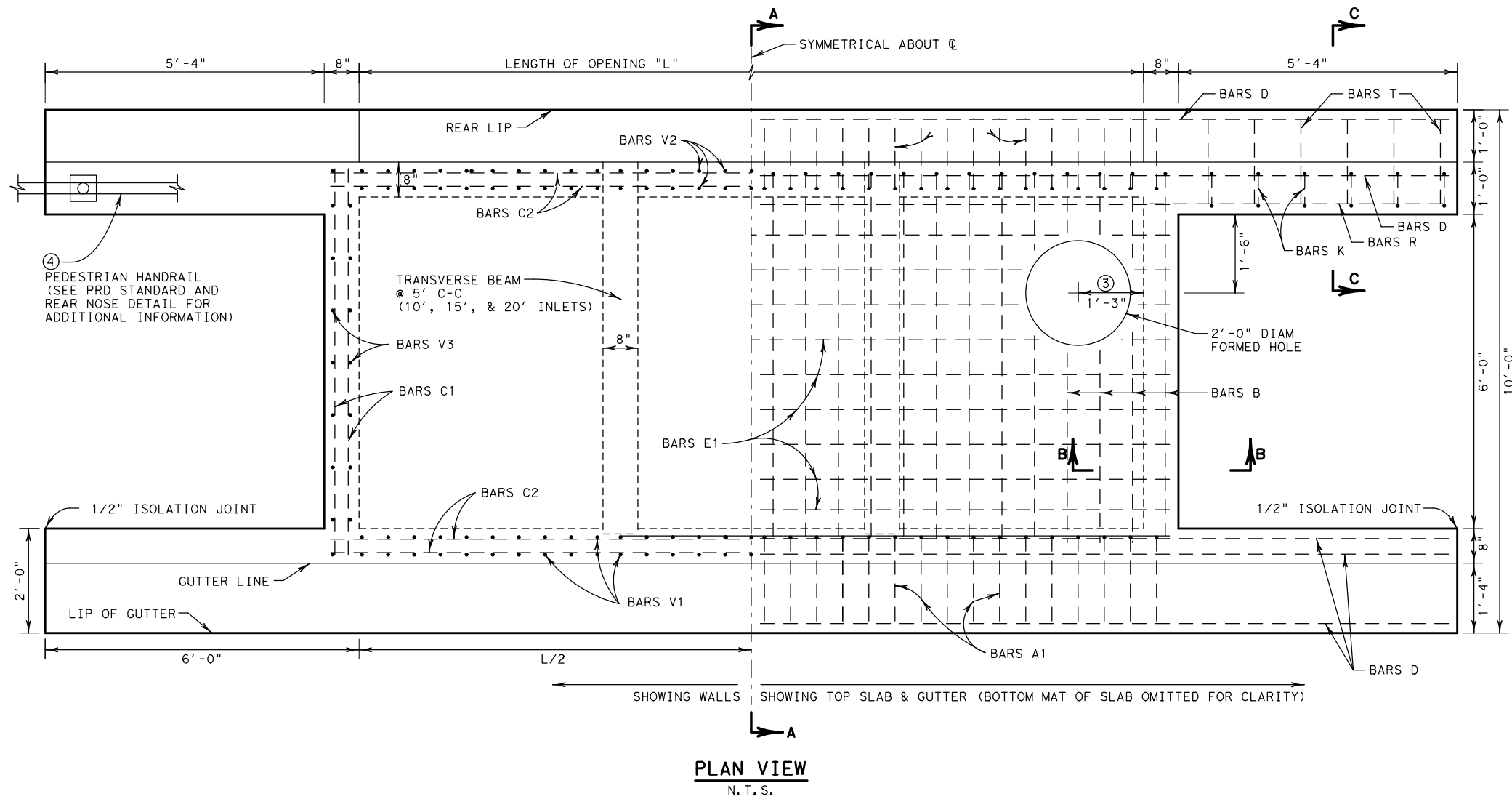


DISCLAIMER: THIS STANDARD IS COVERED BY THE "TEXAS ENGINEERING PRACTICE ACT". NO WARRANTY OF ANY KIND IS MADE BY TxDOT FOR ANY PURPOSE WHATSOEVER. TxDOT ASSUMES NO RESPONSIBILITY FOR THE CONVERSION OF THIS STANDARD TO OTHER FORMATS OR FOR INCORRECT RESULTS OR DAMAGES RESULTING FROM ITS USE.

http://www.dot.state.tx.us/ftw/specinfo/standard.htm  
 11/6/2020 11:20:37 AM  
 P:\PROJECTS\TXDOT\16121\5 FTW Standards Revision\CADD\Modifications in Progress\1c0bc-ftw.dgn



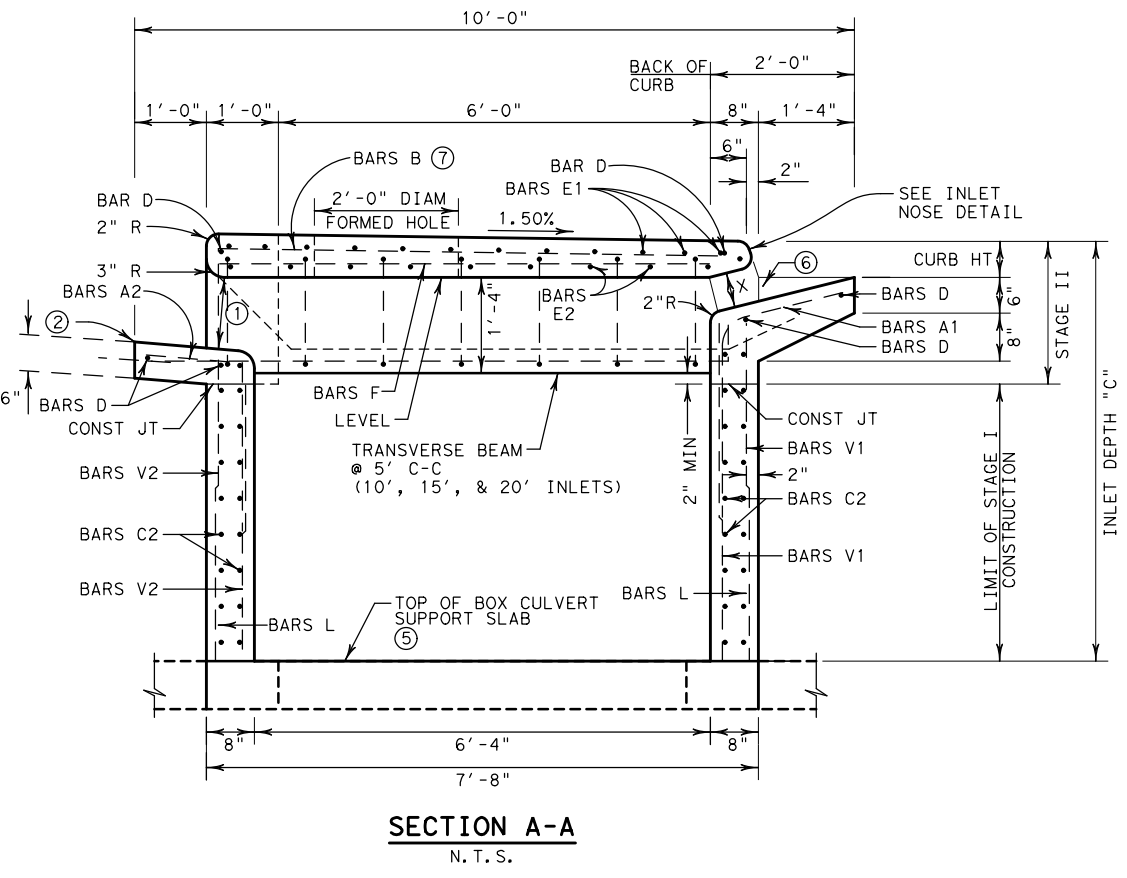
MAXIMUM PARALLEL * CONDUIT SIZE	
PIPE DIAMETER (IN)	BOX SPAN (FT)
60	5

\* PARALLEL TO ROADWAY

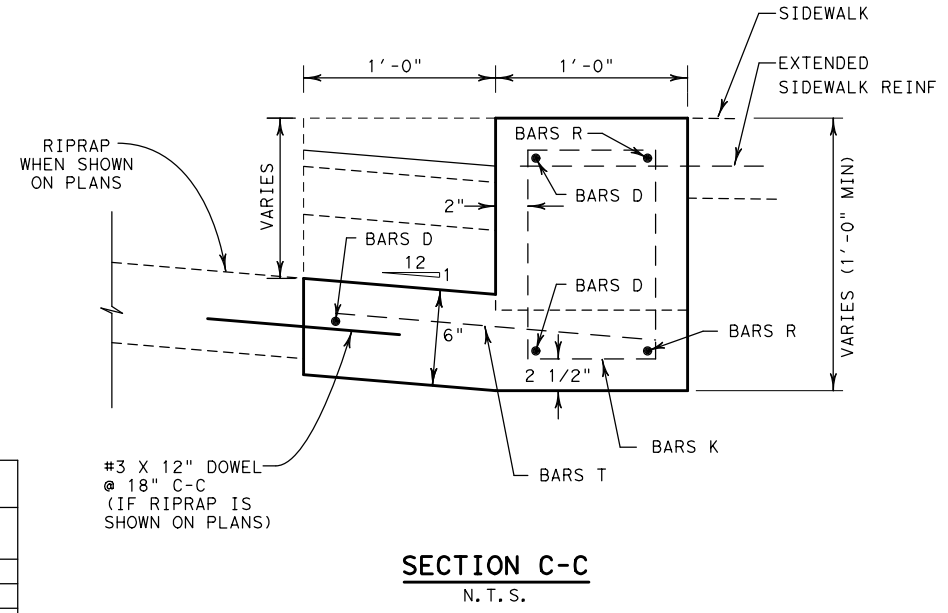
- ① 12" OPENING AT MIDPOINT OF INLET
- ② REAR LIP AT CONSTANT ELEVATION ACROSS OPENING
- ③ PLACE RING & COVER AT OUTFALL END OF INLET, UNLESS OTHERWISE DIRECTED
- ④ HANDRAIL REQUIRED IF SIDEWALK IS PRESENT
- ⑤ SEE MI-CBC (FTW) STANDARD FOR SUPPORT SLAB DETAIL
- ⑥ 4" DEPRESSION AT GUTTER LINE
- ⑦ BARS B TO BE CONTINUOUS ACROSS REAR OPENING

SEE SHEET 2 OF 3 FOR GENERAL NOTES.

SHEET 1 OF 3 SHEETS



THROAT DIMENSION	
CURB HEIGHT	"X"
5"	5"
6"	5 7/8"
7"	6 1/4"
8"	6 1/2"



Texas Department of Transportation

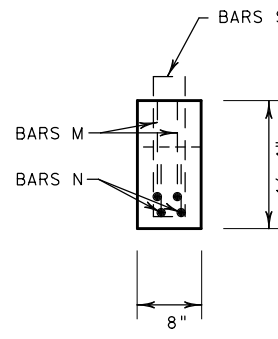
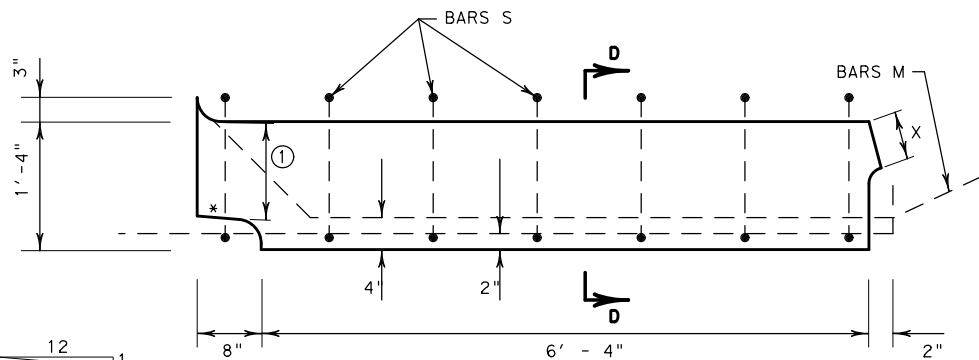
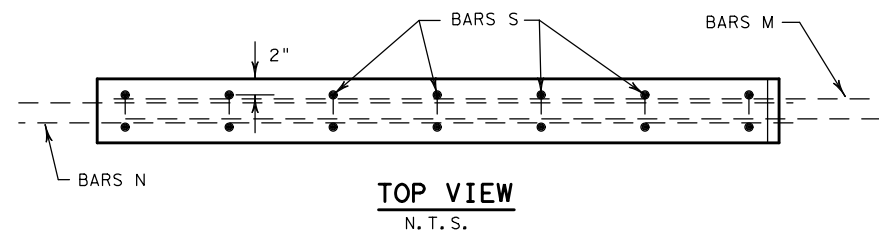
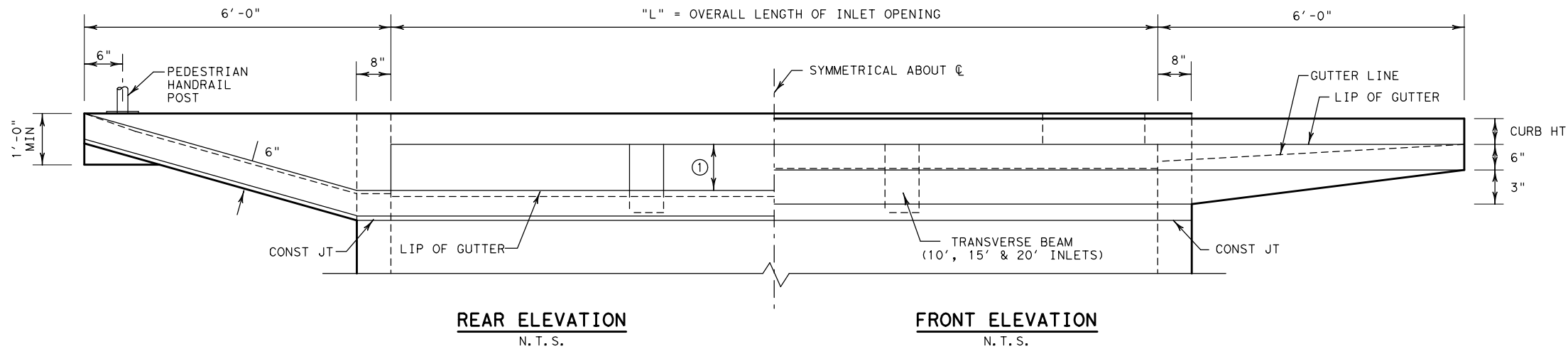
Fort Worth District Standard

## OPEN BACK CURB INLET FOR USE WITH TYPE II CURB AND BOX CULVERT OR SEWER I-COB-C (FTW)

ORIGINAL DRAWING: 05/2019	icobc-ftw.dgn	FED. RD. DIV. NO.	PROJECT NO.		SHEET NO.
DATE	REVISIONS	6			
05/2019	NEW STANDARD		STATE	DIST. NO.	COUNTY
04/2020	REDUCE BAR B SPACING; ADD MAX CONDUIT SIZE TABLE		TEXAS	FTW	
11/2020	REVISED JOINT NOMENCLATURE		CONT.	SECT.	JOB HIGHWAY NO.

DISCLAIMER: THIS STANDARD IS GOVERNED BY THE "TEXAS ENGINEERING PRACTICE ACT". NO WARRANTY OF ANY KIND IS MADE BY TXDOT FOR ANY PURPOSE WHATSOEVER. TXDOT ASSUMES NO RESPONSIBILITY FOR THE CONVERSION OF THIS STANDARD TO OTHER FORMATS OR FOR INCORRECT RESULTS OR DAMAGES RESULTING FROM ITS USE.

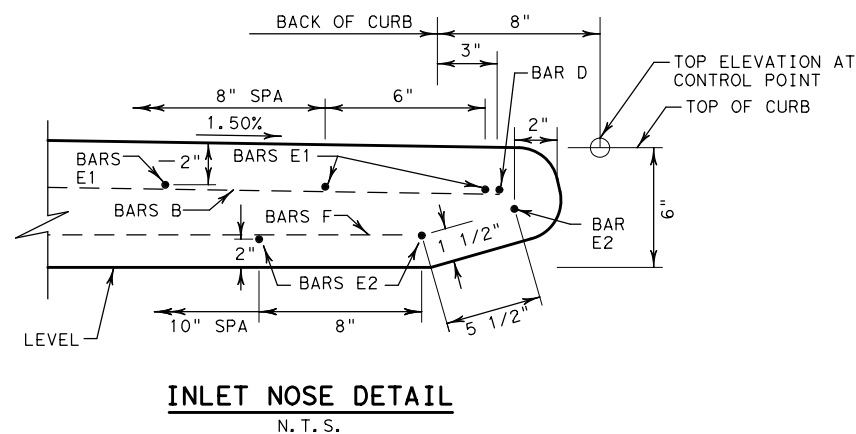
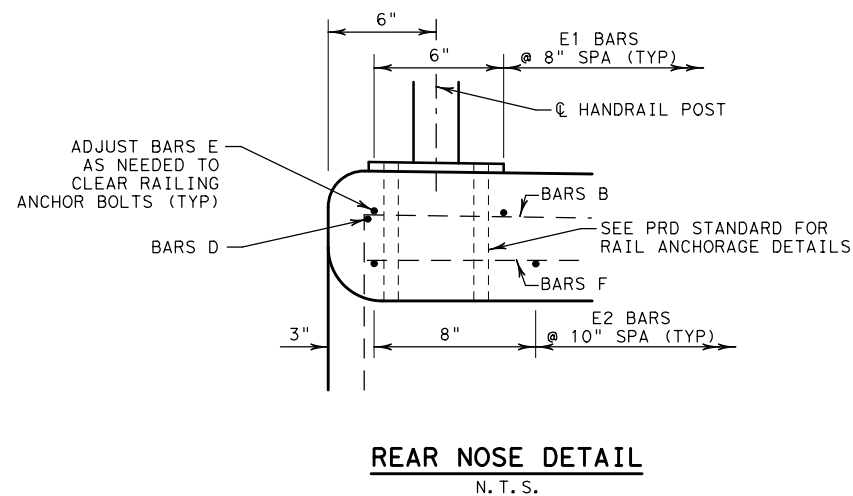
http://www.dot.state.tx.us/ftw/specinfo/standard.htm  
 11/6/2020 11:21:06 AM  
 P:\PROJECTS\TXDOT\16121\5 FTW Standards Revision\CADD\Modifications in Progress\icobc-ftw.dgn



**GENERAL NOTES**

- DESIGNED ACCORDING TO AASHTO LRFD SPECIFICATIONS FOR PEDESTRIAN LOADING AND HL-93 LOADING UNDER "EXTREME EVENT II" LOAD COMBINATION.
- ALL CONCRETE FOR CAST-IN-PLACE STRUCTURES SHALL BE CLASS "C"; ALL CONCRETE FOR PRECAST STRUCTURES SHALL BE CLASS "H" (MIN 5000 PSI COMPRESSIVE STRENGTH).
- ALL REINFORCING STEEL SHALL BE GRADE 60.
- STAGE I MAY BE EITHER CAST-IN-PLACE OR PRECAST. FABRICATE PRECAST STRUCTURES USING REBAR AS DETAILED HEREON, WITH BARS A1, A2, V1 AND V3 TO BE INCLUDED WITH STAGE I. SPLICING OF BARS WILL NOT BE PERMITTED, EXCEPT AS NOTED.
- STAGE II SHALL BE CAST-IN-PLACE.
- CHAMFER ALL EXPOSED CORNERS 3/4", EXCEPT WHERE NOTED OTHERWISE.
- DIMENSIONS RELATING TO REINFORCING STEEL ARE TO THE CENTERS OF BARS.
- FIELD CUT AND BEND BARS AS NECESSARY TO ACCOMMODATE STORM DRAIN PIPE.
- INSTALL RING AND COVER AT OUTFALL END OF INLET, UNLESS OTHERWISE DIRECTED. CAST IRON RING AND COVER SHALL CONFORM TO ITEM 471. SEE STANDARD MDD (FTW) FOR RING AND COVER DETAILS.
- DEPTHS OTHER THAN THOSE SHOWN MAY BE USED WHENEVER NECESSARY, UP TO A MAXIMUM DEPTH OF 15'. QUANTITIES FOR OTHER DEPTHS MAY BE DETERMINED BY INTERPOLATION.
- DO NOT COMMENCE WITH STAGE II CONSTRUCTION UNTIL CONCRETE PAVEMENT AND CURB, OR CONCRETE CURB AND GUTTER CONSTRUCTION IS COMPLETED AT THE INLET SITE.
- INSTALL A TEMPORARY WOOD COVER AFTER STAGE I IS COMPLETED, TO REMAIN IN PLACE UNTIL STAGE II CONSTRUCTION BEGINS.
- THE LOCATION OF INLET AS SHOWN IN THE PLAN REFERS TO THE CONTROL POINT AT THE FACE OF CURB AND MID-POINT OF THE INLET.
- PLACE A SEALED 1/2" ISOLATION JOINT ALONG ALL VERTICAL FACES ABUTTING CONCRETE PAVEMENT, CURB, CURB AND GUTTER, OR SIDEWALK. USE CLASS 5 OR 8 JOINT SEALANT TO SEAL THE JOINT. SEE STANDARD JS (FTW) FOR ADDITIONAL INFORMATION.

SHEET 2 OF 3 SHEETS



		<b>Fort Worth District Standard</b>	
<h2>OPEN BACK CURB INLET FOR USE WITH TYPE II CURB AND BOX CULVERT OR SEWER I-COB-C (FTW)</h2>			
ORIGINAL DRAWING:	05/2019	icobc-ftw.dgn	FED. RD. DIV. NO. 6
DATE	REVISIONS		PROJECT NO.
05/2019	NEW STANDARD		STATE DIST. NO. TEXAS
11/2020	REVISED JOINT NOMENCLATURE		COUNTY FTW
	CONT.	SECT.	JOB HIGHWAY NO.

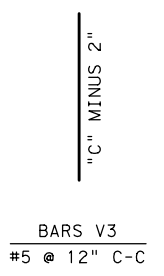
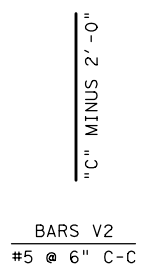
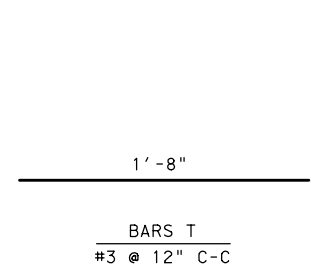
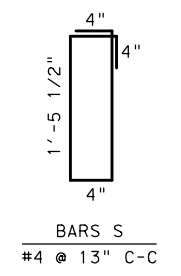
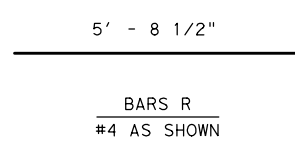
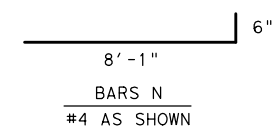
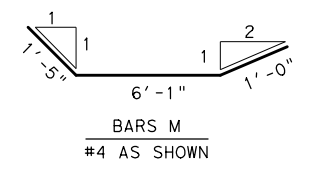
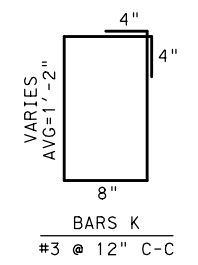
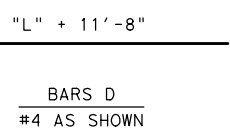
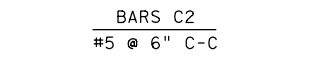
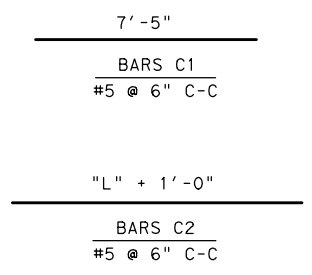
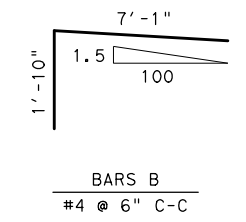
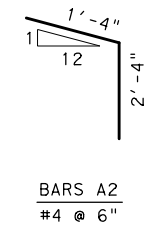
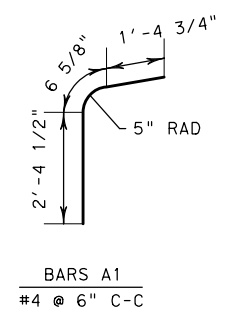
DISCLAIMER: THE USE OF THIS STANDARD IS GOVERNED BY THE "TEXAS ENGINEERING PRACTICE ACT". NO WARRANTY OF ANY KIND IS MADE BY TXDOT FOR ANY PURPOSE WHATSOEVER. TXDOT ASSUMES NO RESPONSIBILITY FOR THE CONVERSION OF THIS STANDARD TO OTHER FORMATS OR FOR INCORRECT RESULTS OR DAMAGES RESULTING FROM ITS USE.

http://www.dot.state.tx.us/ftw/specinfo/standard.htm  
 11/6/2020 11:21:36 AM  
 P:\PROJECTS\TXDOT\16121\5 FTW Standards Revision\CADD\Modifications in Progress\1cobc-ftw.dgn

BILL OF REINFORCING STEEL FOR "C" = 4'																														
Length [ft]	Bars A1			Bars A2			Bars B			Bars C1			Bars C2			Bars D			Bars E1			Bars E2			Bars F			Bars K		
	No	Length	Wt	No	Length	Wt	No	Length	Wt	No	Length	Wt	No	Length	Wt	No	Length	Wt	No	Length	Wt	No	Length	Wt	No	Length	Wt			
5.0	13	4.323	38	13	3.667	32	13	8.917	77	28	7.417	217	19	6.000	119	6	16.667	67	12	6.000	75	10	6.000	63	9	6.802	41	12	4.333	20
10.0	23	4.323	66	23	3.667	56	23	8.917	137	28	7.417	217	19	11.000	218	6	21.667	87	12	11.000	138	10	11.000	115	17	6.802	77	12	4.333	20
15.0	33	4.323	95	33	3.667	81	33	8.917	197	28	7.417	217	19	16.000	317	6	26.667	107	12	16.000	200	10	16.000	167	25	6.802	114	12	4.333	20
20.0	43	4.323	124	43	3.667	105	43	8.917	256	28	7.417	217	19	21.000	416	6	31.667	127	12	21.000	263	10	21.000	219	33	6.802	150	12	4.333	20

BILL OF REINFORCING STEEL FOR "C" = 4' (CONTINUED)																													
Length [ft]	Bars M			Bars N			Bars R			Bars S			Bars T			Bars V1			Bars V2			Bars V3							
	No	Length	Wt	No	Length	Wt	No	Length	Wt	No	Length	Wt	No	Length	Wt	No	Length	Wt	No	Length	Wt	No	Length	Wt	No	Length	Wt		
5.0	0	8.500	0	0	8.583	0	4	5.708	15	0	4.250	0	12	1.667	8	20	2.833	59	20	2.000	42	28	3.833	112					
10.0	2	8.500	11	2	8.583	11	4	5.708	15	7	4.250	20	12	1.667	8	40	2.833	118	40	2.000	83	28	3.833	112					
15.0	4	8.500	23	4	8.583	23	4	5.708	15	14	4.250	40	12	1.667	8	60	2.833	177	60	2.000	125	28	3.833	112					
20.0	6	8.500	34	6	8.583	34	4	5.708	15	21	4.250	60	12	1.667	8	80	2.833	236	80	2.000	167	28	3.833	112					

SUMMARY OF QUANTITIES			
Total Reinf	Steel Qty Adjust.	Class "C" Concrete	Concrete Qty Adjust.
Weight	PLF.	[CY]	PLF.
983	182.9	5.0	0.63
1,509	266.3	6.9	0.87
2,036	349.8	8.9	1.12
2,563	433.2	10.8	1.37



SHEET 3 OF 3 SHEETS

		<b>Fort Worth District Standard</b>	
<h2>OPEN BACK CURB INLET FOR USE WITH TYPE II CURB AND BOX CULVERT OR SEWER I-COB-C (FTW)</h2>			
ORIGINAL DRAWING: 05/2019	icobc-ftw.dgn	FED. RD. DIV. NO. 6	PROJECT NO.
DATE	REVISIONS	STATE	COUNTY
05/2019	NEW STANDARD	TEXAS	FTW
04/2020	UPDATE TABLE	CONT.	SECT.
11/2020	REVISED JOINT NOMENCLATURE	JOB	HIGHWAY NO.

©2020 by Texas Department of Transportation; All Rights Reserved